

LRRC15 Targeting in Soft-Tissue Sarcomas: Biological and Clinical Implications

Eytan Ben-Ami, Raul Perret, Ying Huang, Félicie Courgeon, Prafulla Gokhale, Audrey Laroche-Clary, Benjamin Eschle, Valérie Velasco, François Le Loarer, Marie-Paule Algeo, James Purcell, George Demetri and Antoine Italiano

Supplementary Materials

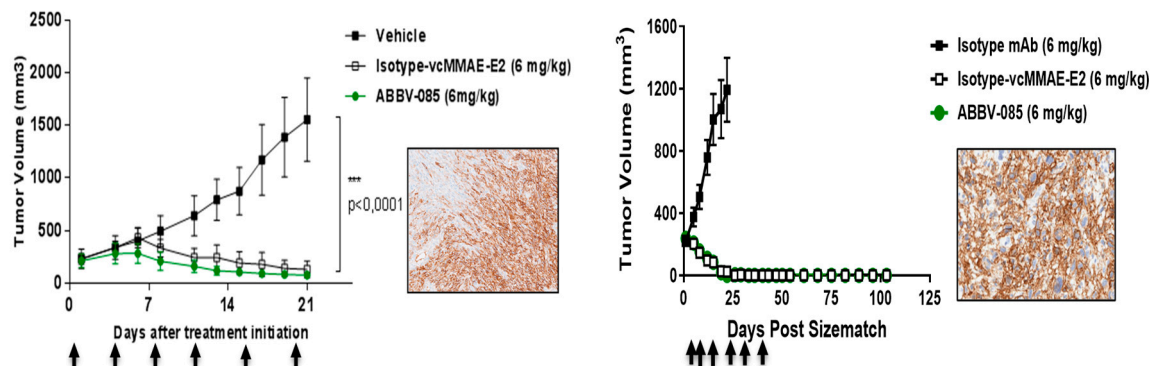
Supplementary Table S1. LRRC15 expression according to grade.

Tumour characteristic		LRRC15 expression		Total
		Low *	High *	
Grade	1	17	1	18
	2	112	13	125
	3	221	60	281
Total		350	74	424

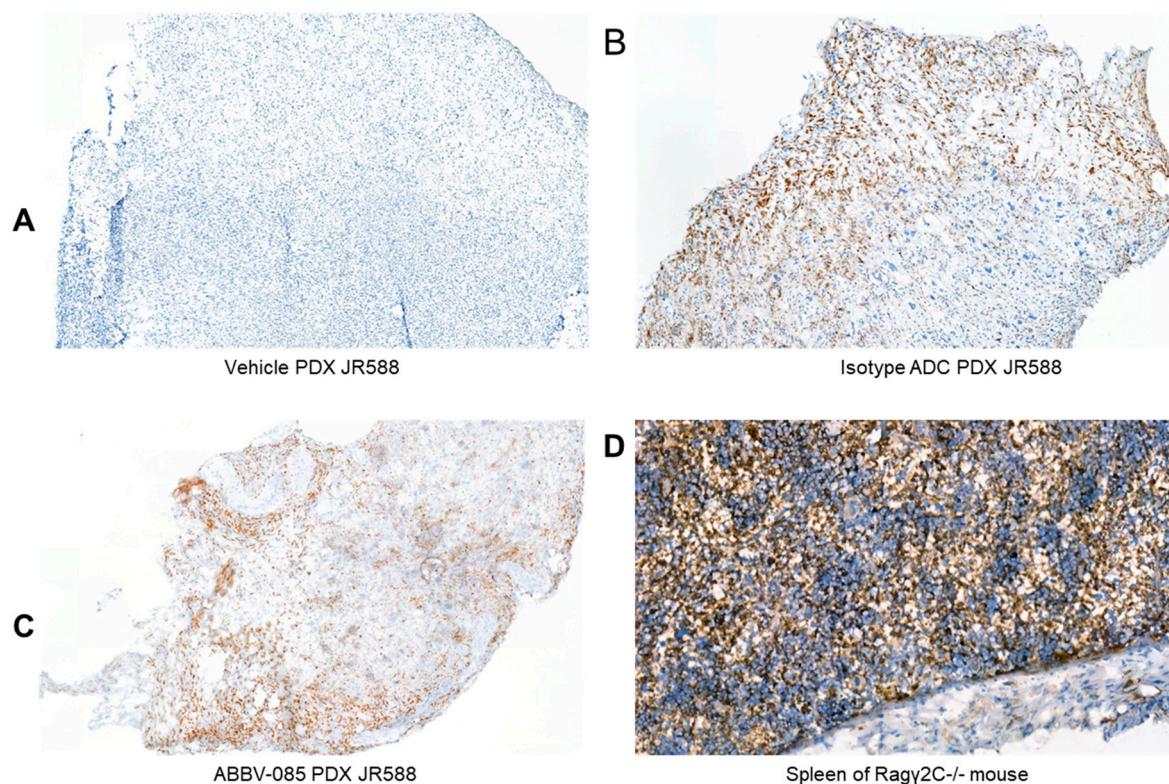
* Low LRRC15 expression (H score ≤ 160); High LRRC15 expression (H score > 160).

(A)

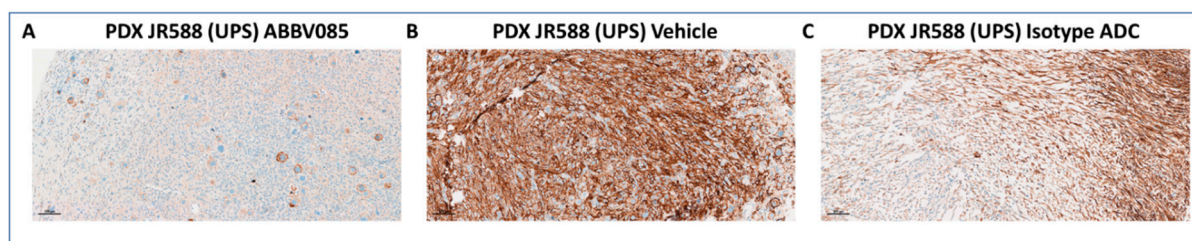
(B)



Supplementary Figure S1. Preclinical activity of ABBV-085 in LRRC15-positive UPS patient derived xenograft models (A: JR588 and B: UPS7).



Supplementary Figure S2. Immunohistostaining of macrophages (F4/80) on PDX JR588 paraffin slices of treated mouse by (A) Vehicle, (B) Isotype ADC, (C) ABBV-085 antibody. (D) Control of F4/80 immunostaining on a Ragy2C^{-/-} spleen paraffin slice.



Supplementary Figure S3. LRRC15 expression on PDX JR588 paraffin slices of treated mouse by (A) ABBV-085, (B) Vehicle (C) Isotype.

