

Supplementary Materials:

Autophagy in Osteosarcoma Cancer Stem Cells Is a Critical Process Which Can Be Targeted by the Antipsychotic Drug Thioridazine

Olivier Camuzard, Marie-Charlotte Trojani, Sabine Santucci-Darmanin, Sophie Pagnotta, Véronique Breuil, Georges F. Carle and Valérie Pierrefite-Carle

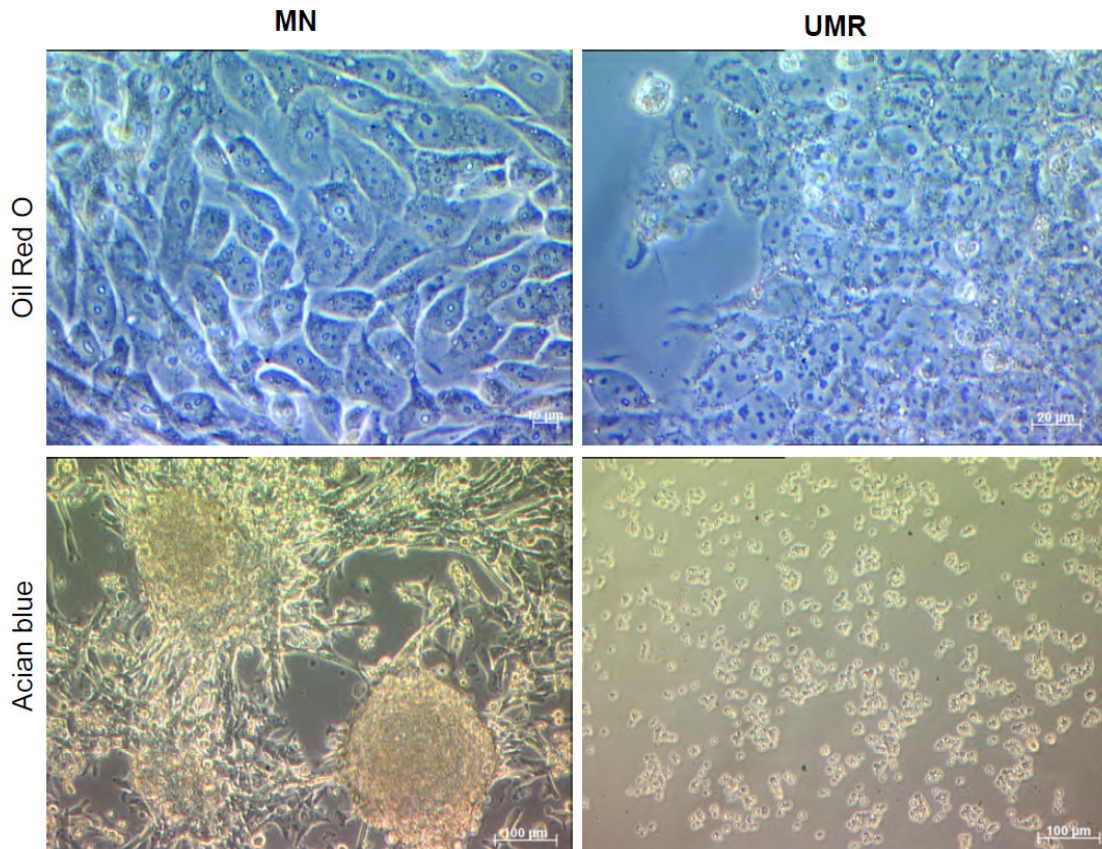
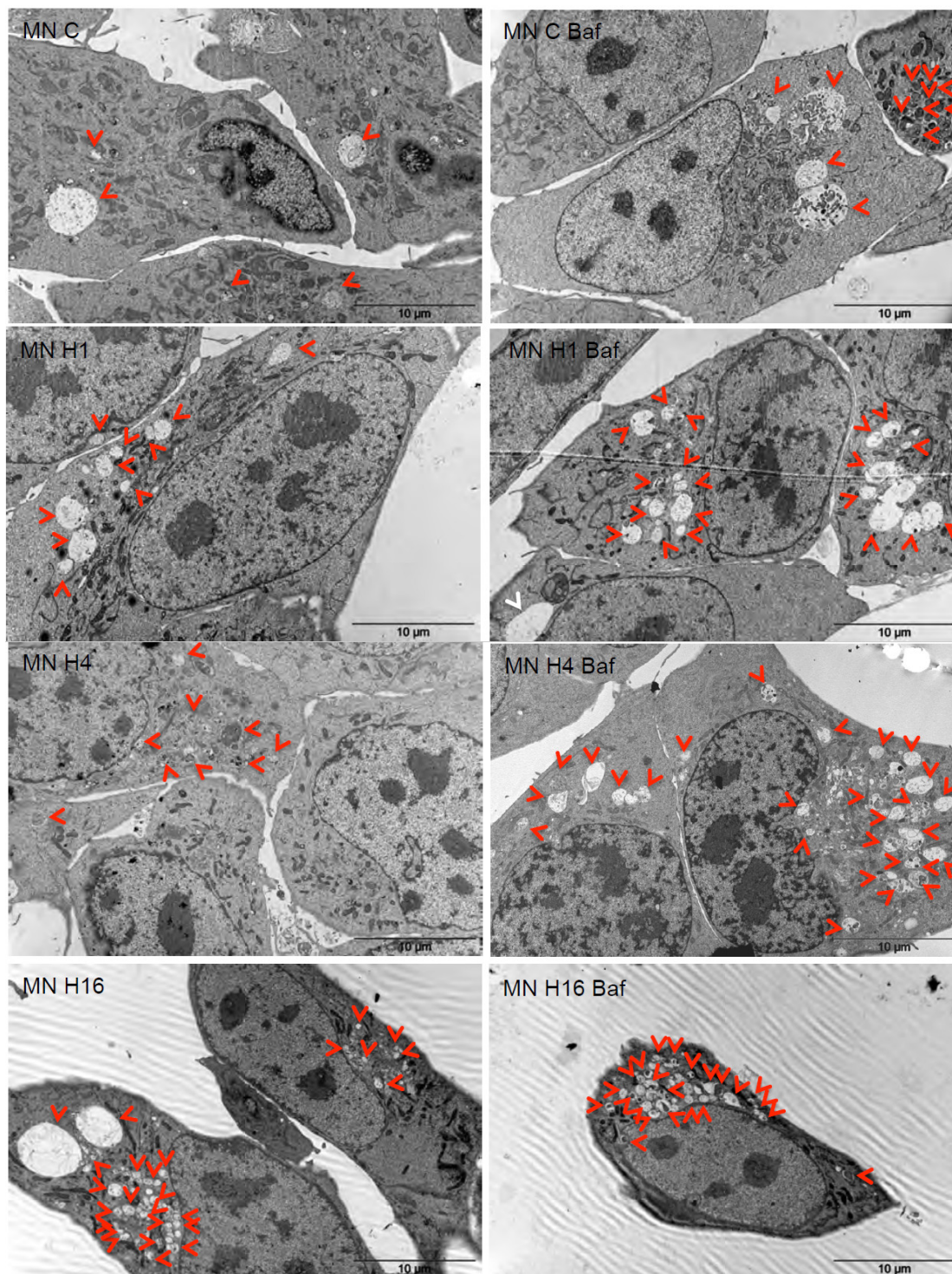


Figure S1. Differentiation capabilities of the parental MN and UMR cells towards adipogenic and chondrogenic lineages.

A



B

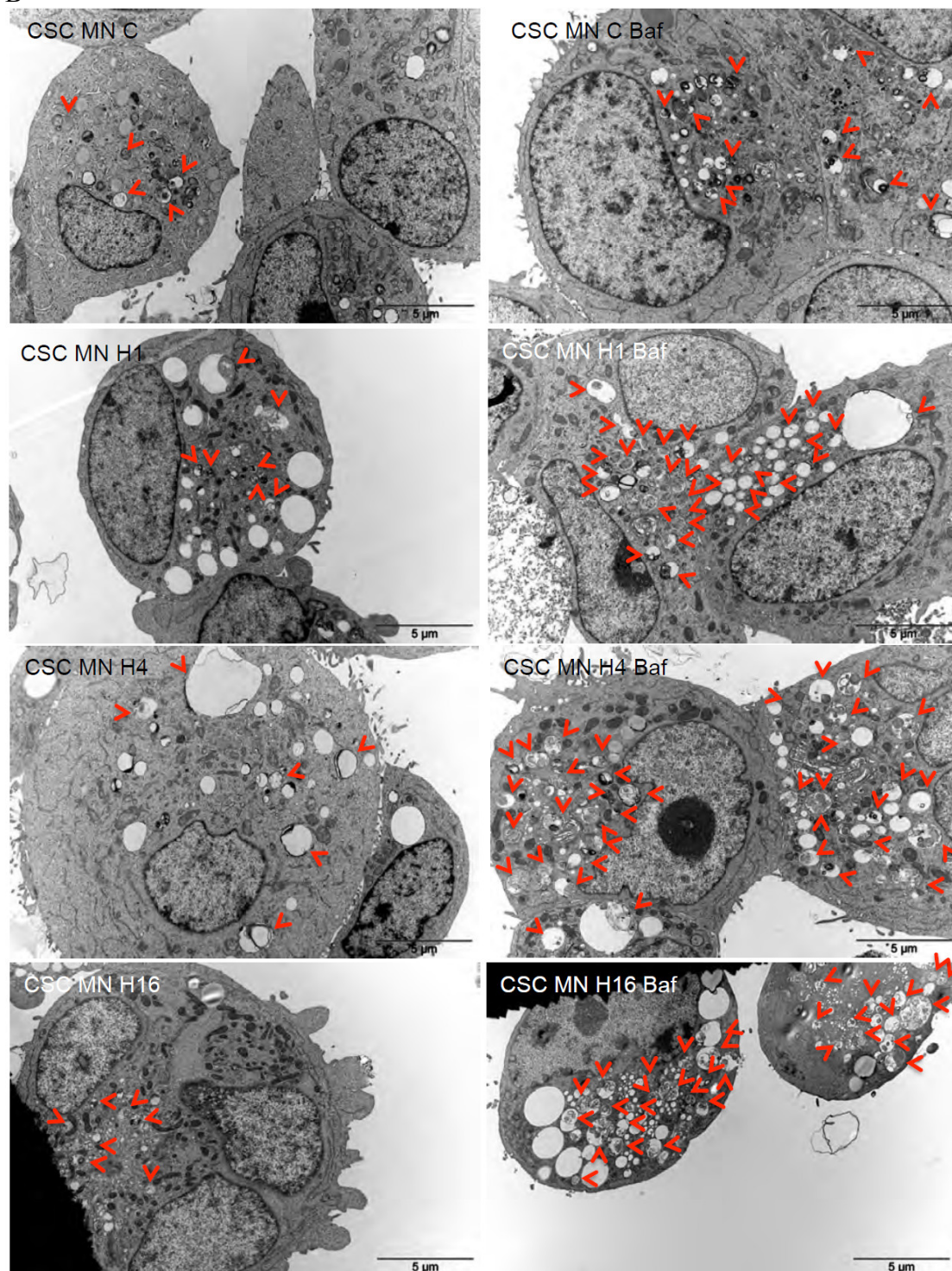


Figure S2. TEM analysis of the MN cell line and the corresponding spheres in control and starvation conditions.

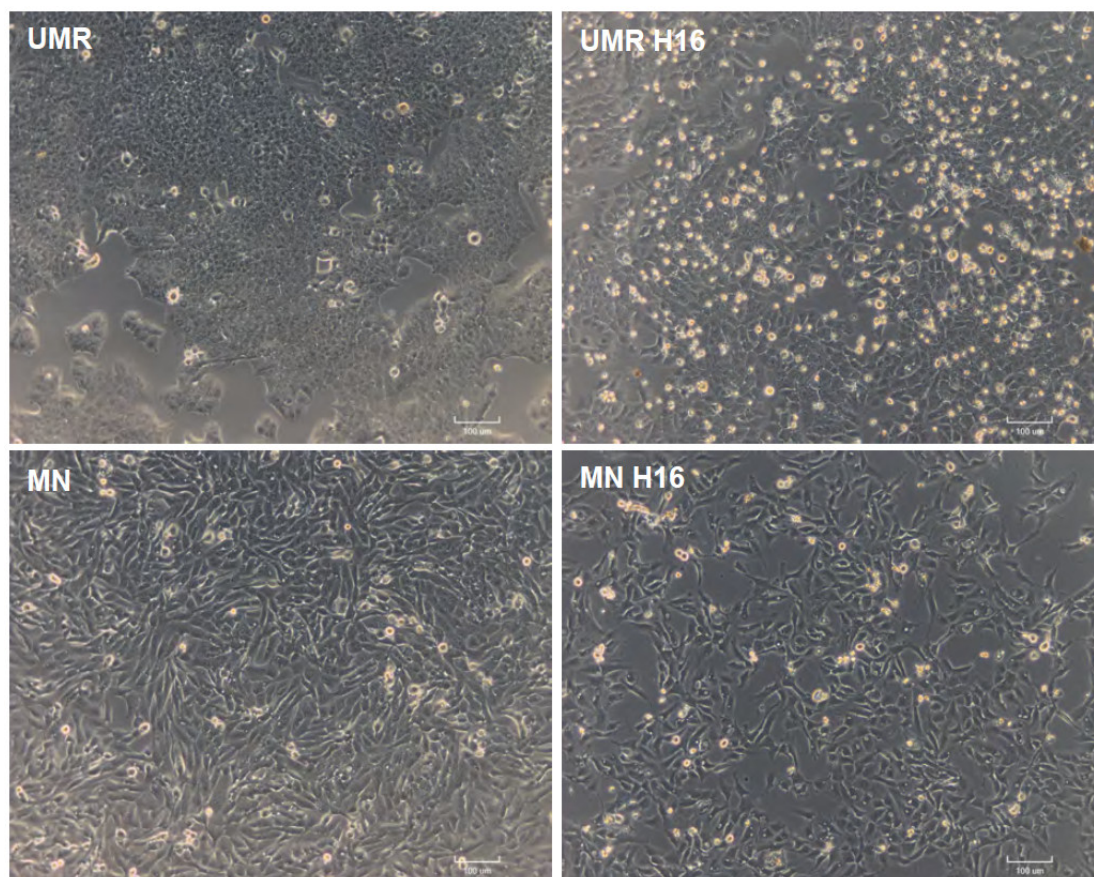
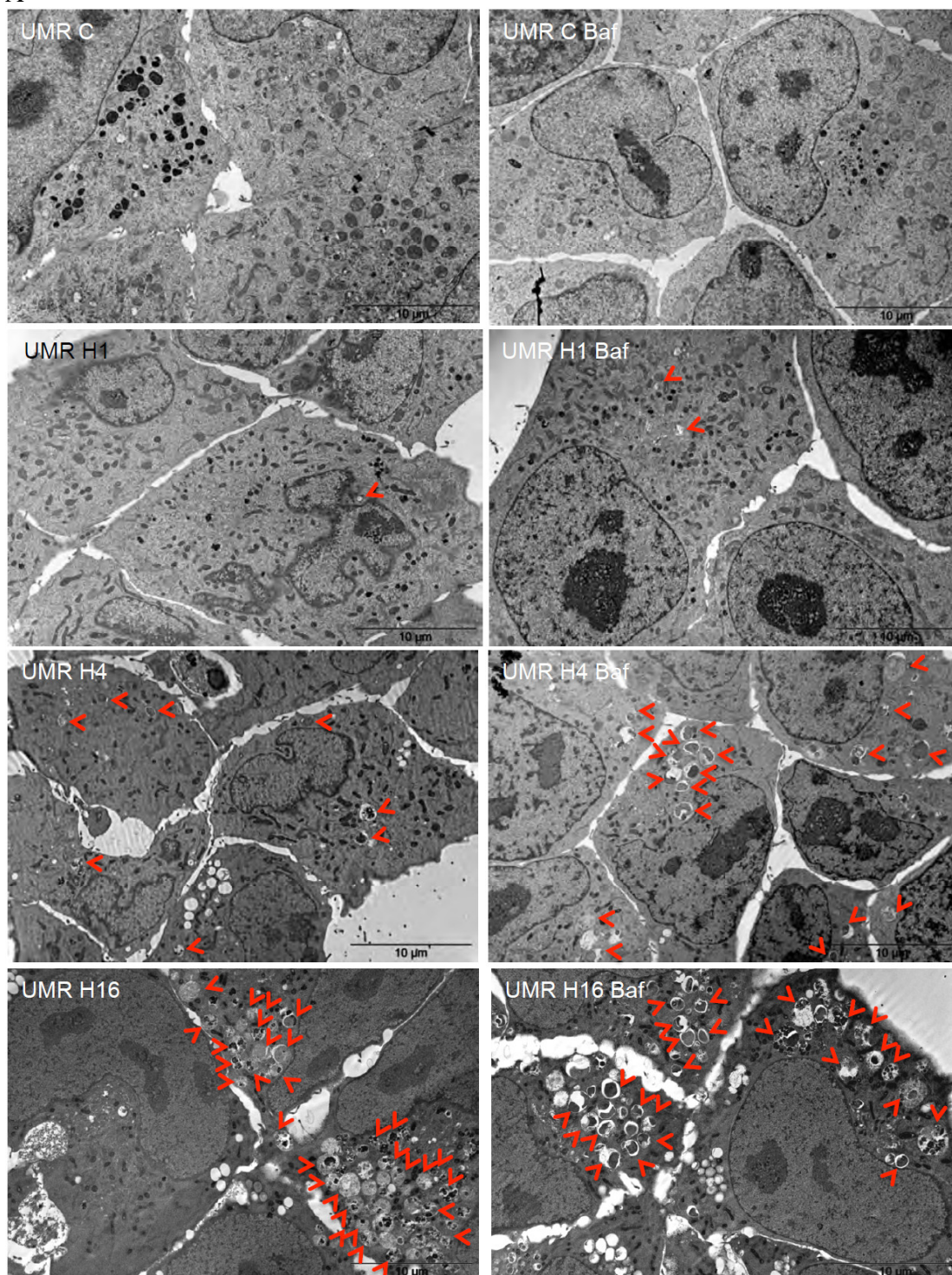


Figure S3. Comparison of the mortality rate in UMR and MN cell lines after 16 h in HBSS.

A



B

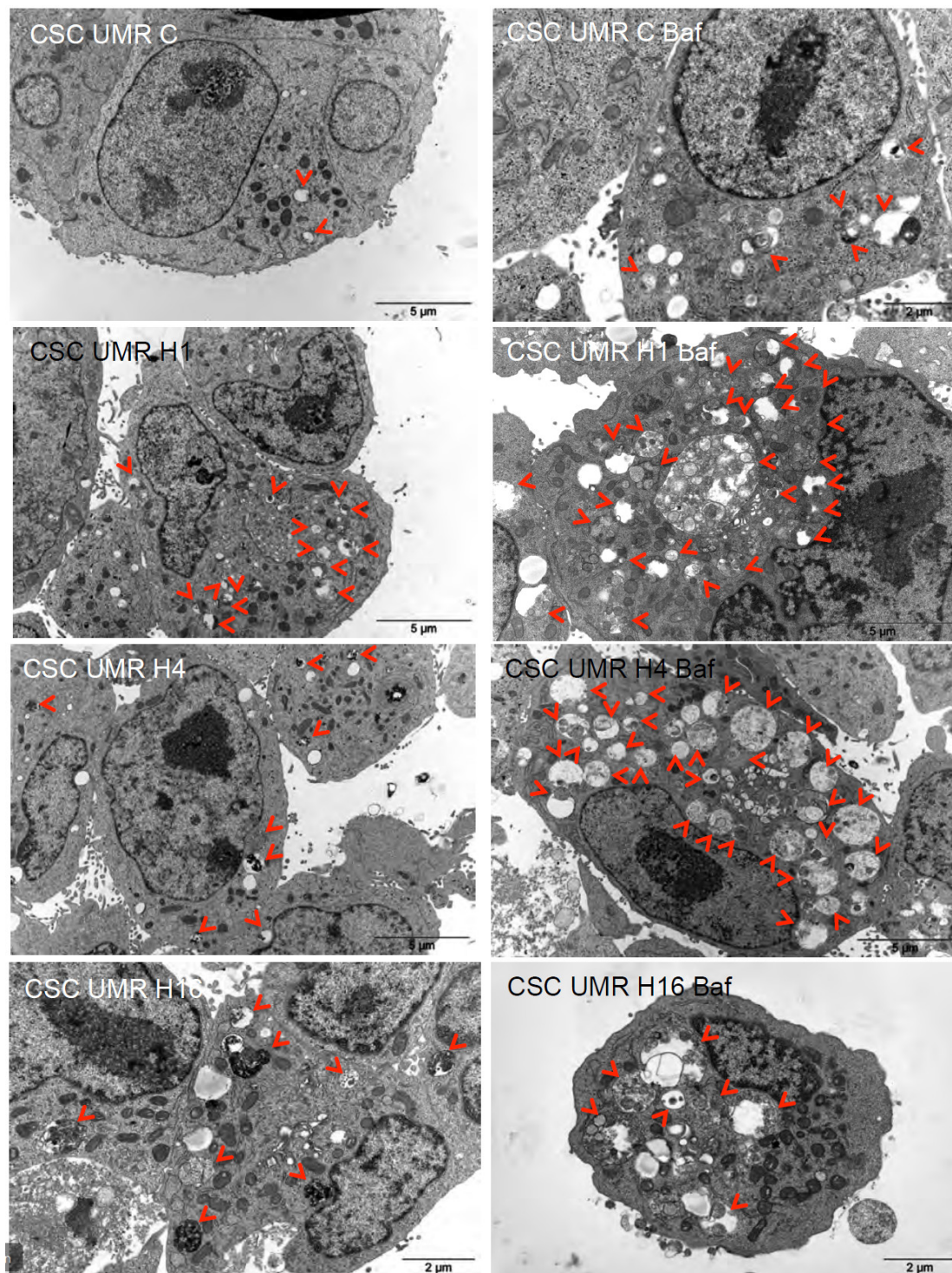
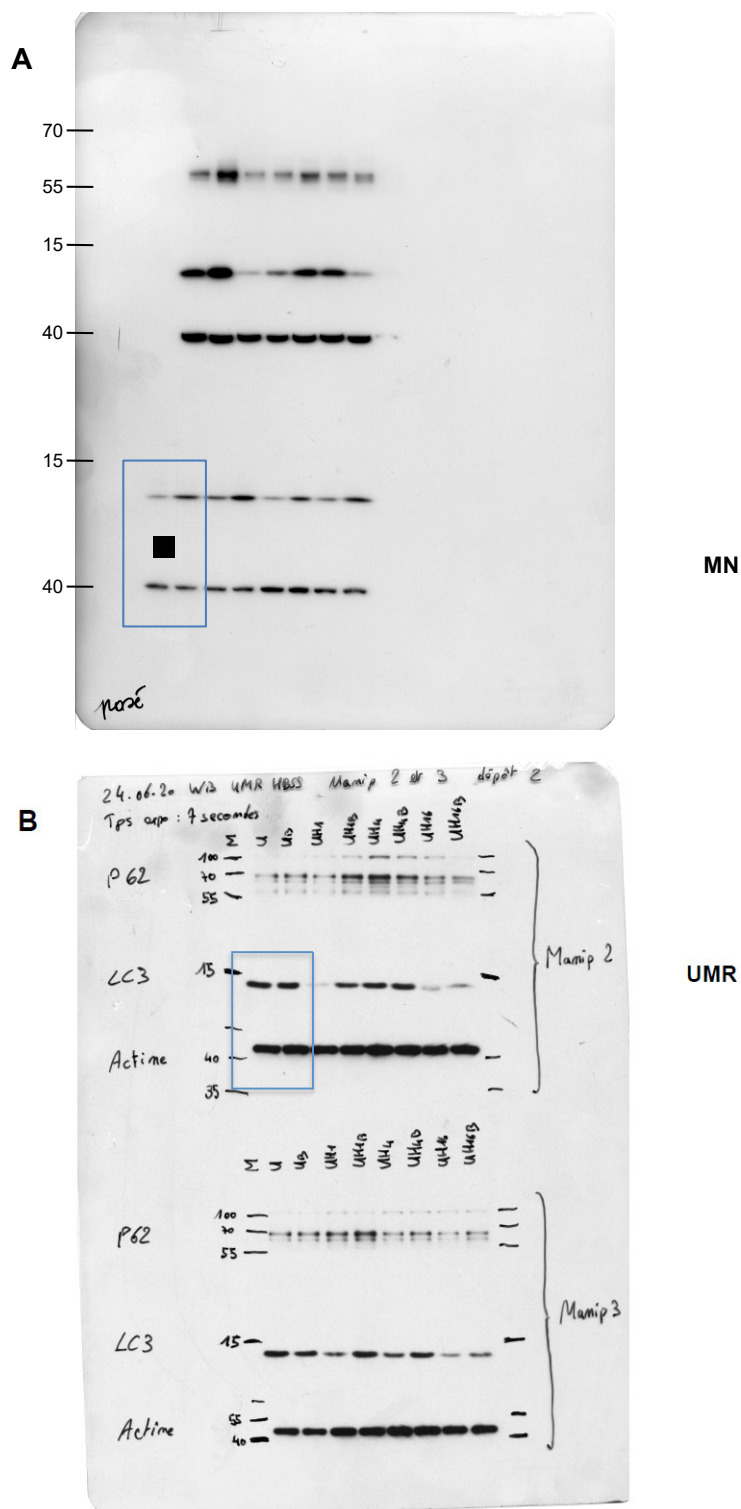
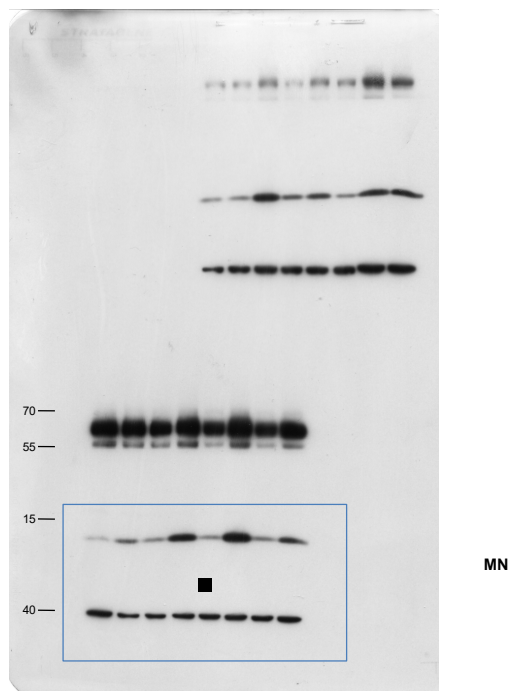


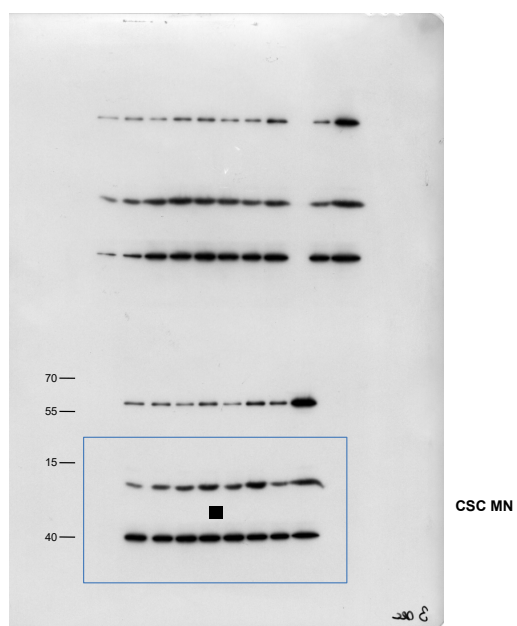
Figure S4. TEM analysis of the UMR cell line and the corresponding spheres in control and starvation conditions



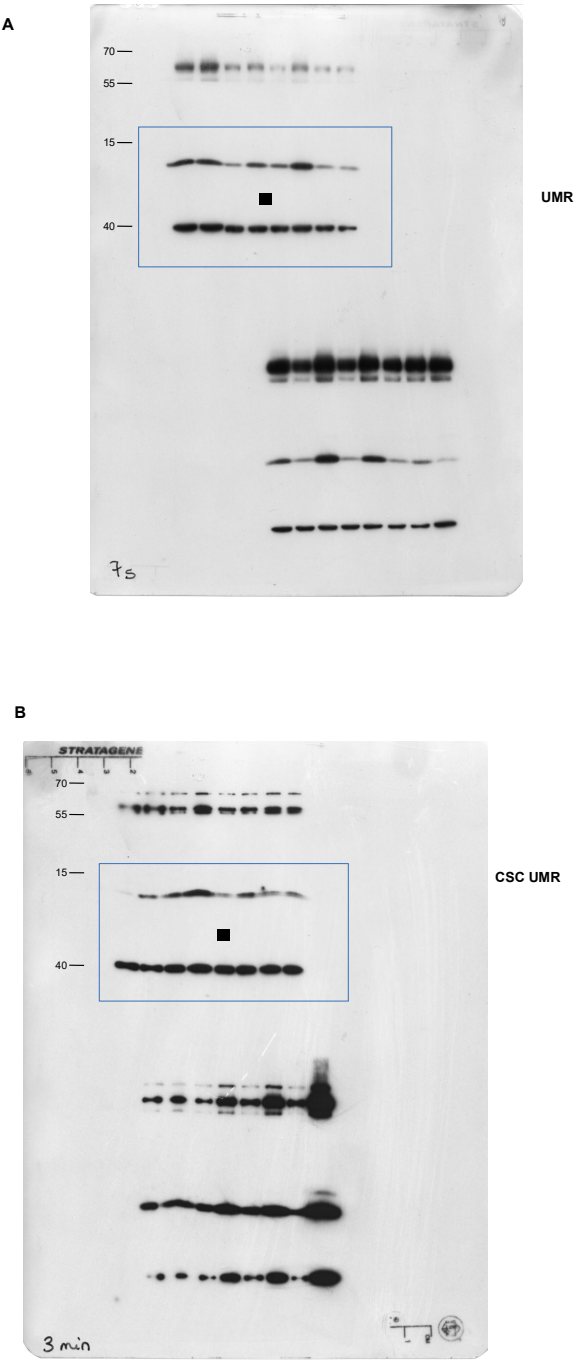
A



B

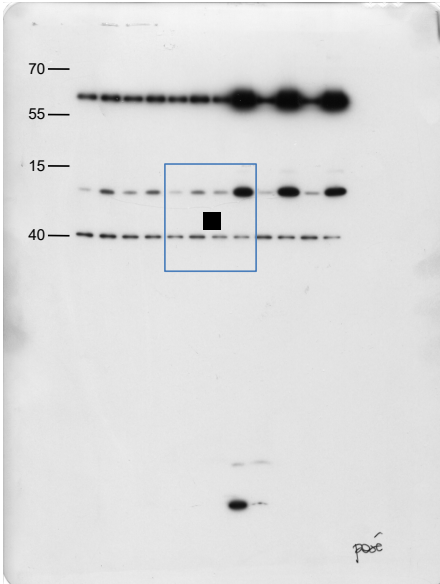


Whole blot for Figure 3



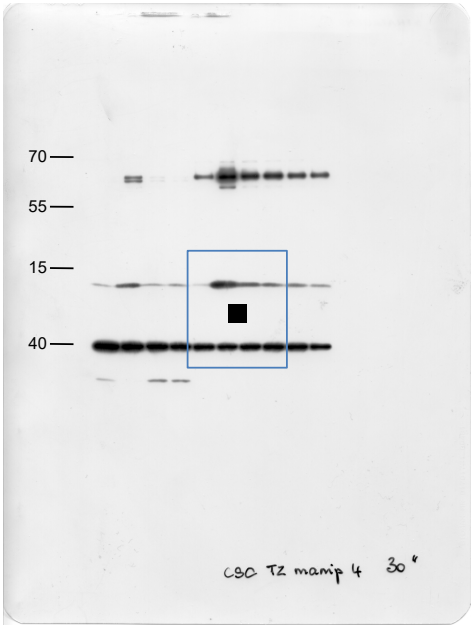
Whole blot for Figure 4

A

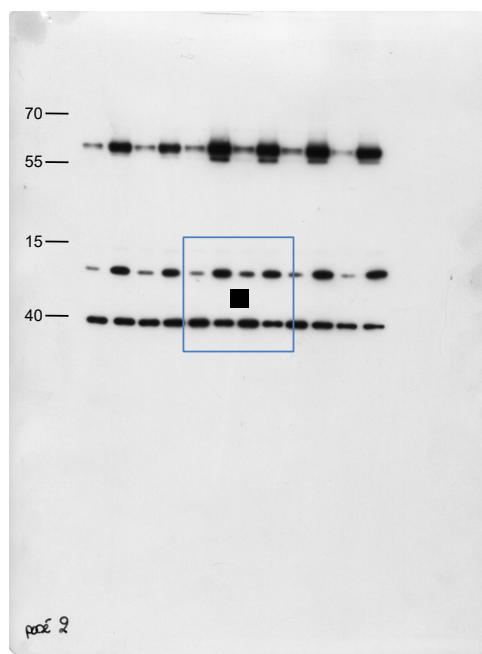


CSC-MN

TZ 1h

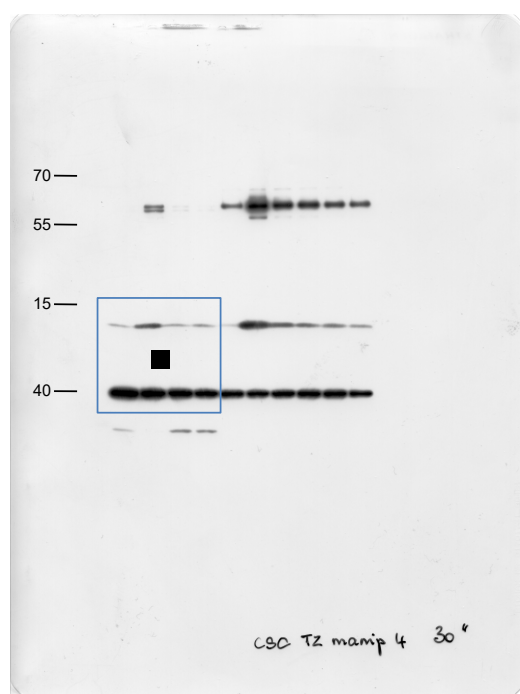


TZ 5h

B

CSC-UMR

TZ 1h



TZ 24h

Whole blot for Figure 5**Figure S5. Original WB.**