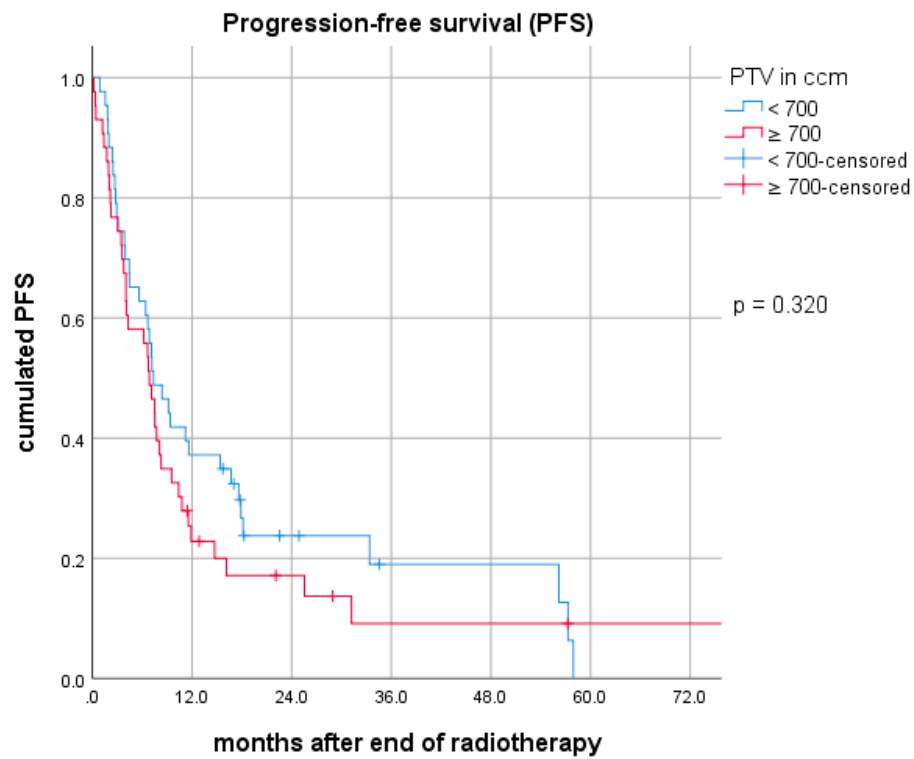
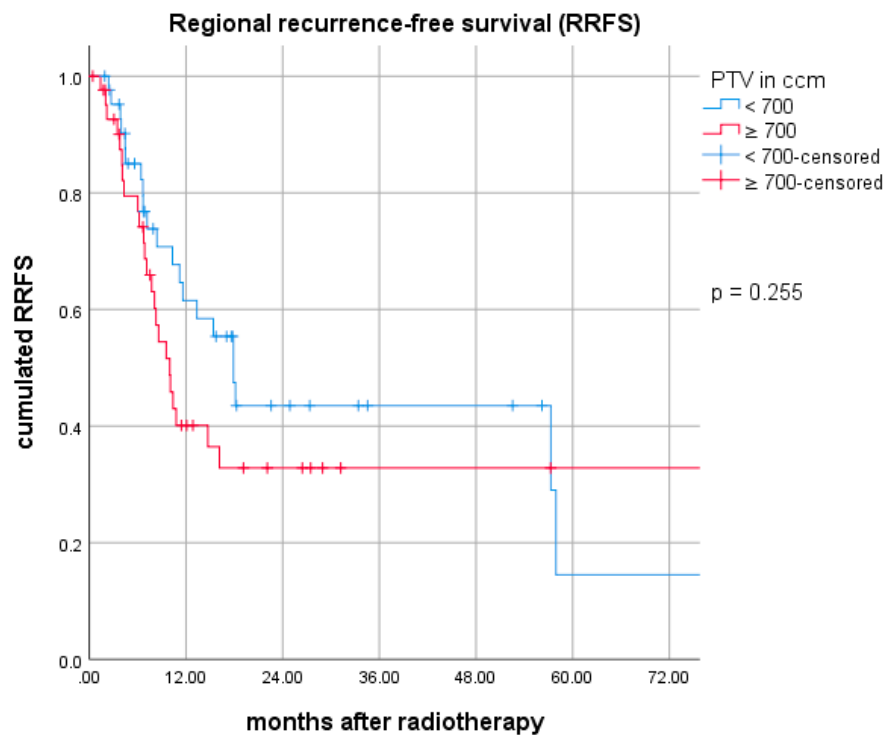


(A)



(B)



(C)

Figure S1. (A). Overall survival (OS) in the PSM cohort by PTV < 700 ccm vs. ≥700 ccm. (B). Progression-free survival (PFS) in the PSM cohort by PTV < 700 ccm vs. ≥700 ccm. (C). Regional recurrence-free survival (RRFS) in the PSM cohort by PTV < 700 ccm vs. ≥700 ccm.