

Figure S1

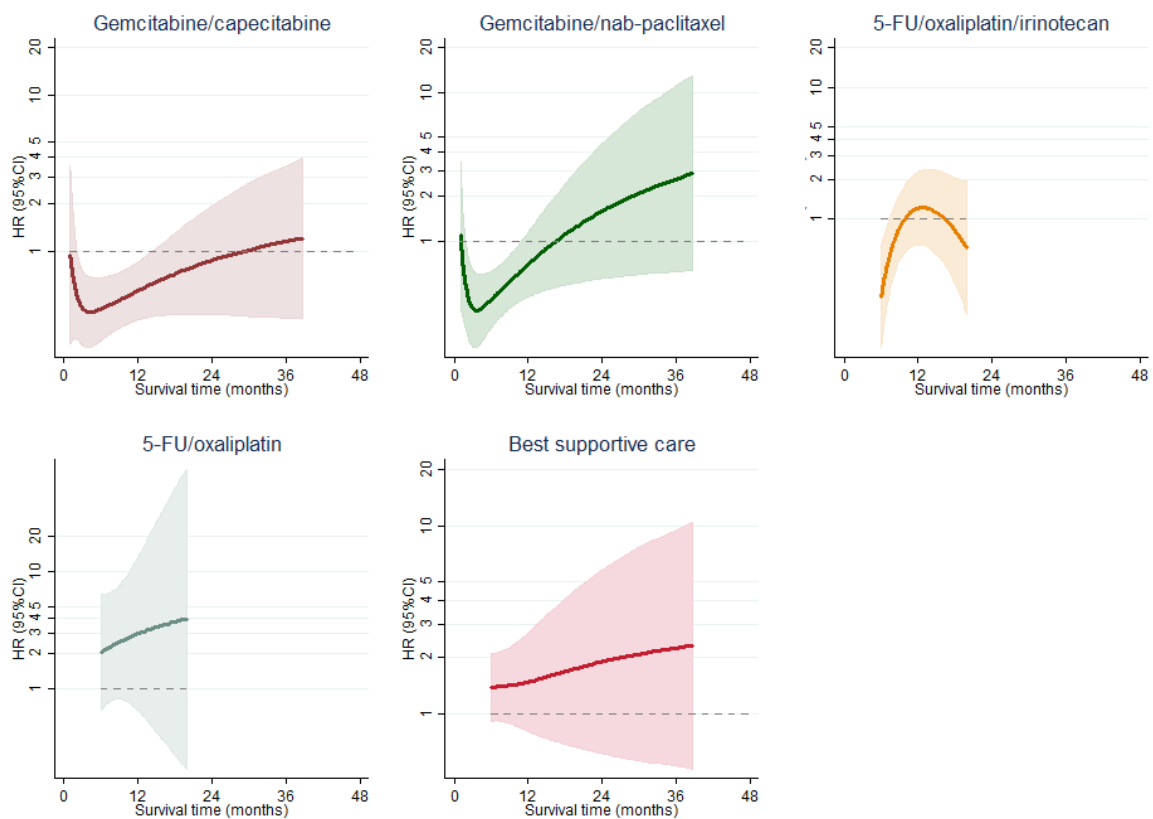


Figure S1 – Flexible parametric survival model of the HR for death according to first-line chemotherapy compared to monotherapy with gemcitabine among pancreatic cancer patients without previous surgery. The models were adjusted for age, sex, BMI, alcohol consumption, smoking status, diabetes, tumor stage, tumor grade, ECOG score, and CA19-9 level.