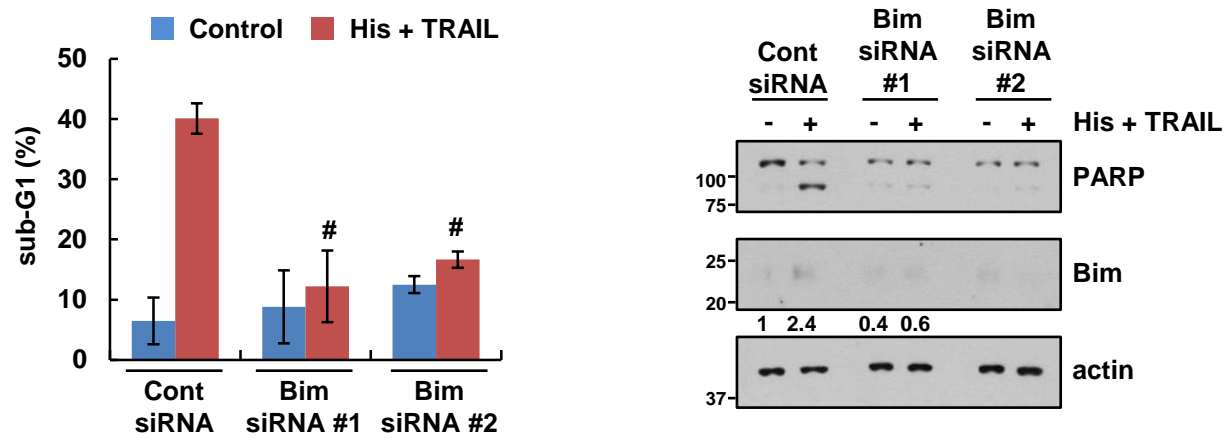


**Supplementary Figure 1. Effect of hispidulin on Bim expression in tumor tissues.** Protein expression was measured by western blotting.



**Supplementary Figure 2. Bim is critical for hispidulin plus TRAIL-induced apoptosis.** A498 cells were transiently transfected with Bim siRNA or control siRNA. After transfection, cells were exposed to 30  $\mu$ M hispidulin and 50 ng/ml TRAIL for 24 h. The level of apoptosis was analyzed by measuring the sub-G1 fraction by flow cytometry. The protein levels were determined by Western blotting. The values represent the mean  $\pm$  SD from three independent experiments. #  $p < 0.05$  compared to the hispidulin plus TRAIL in control siRNA.

Figure 1A

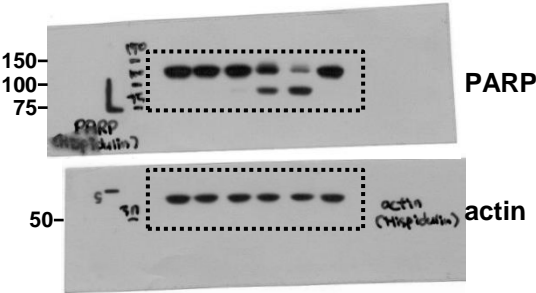


Figure 1B

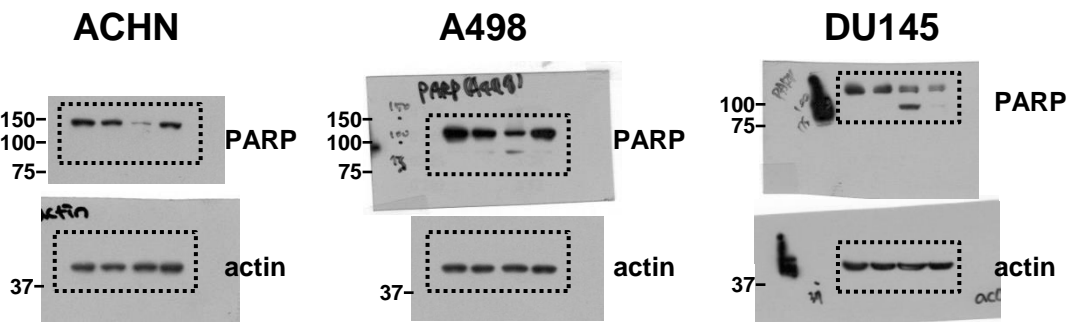
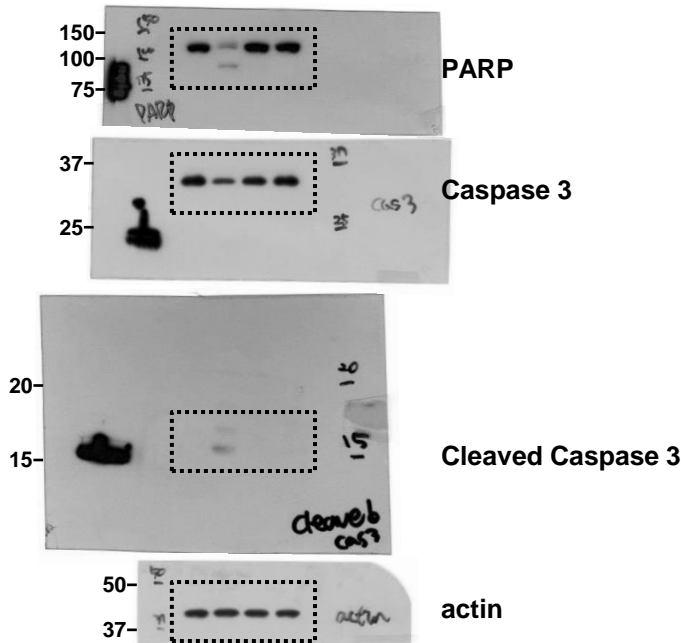
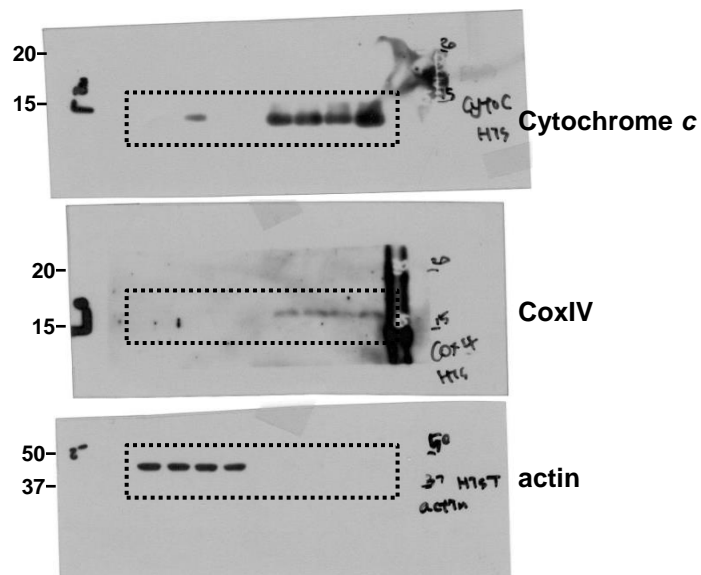


Figure 1F

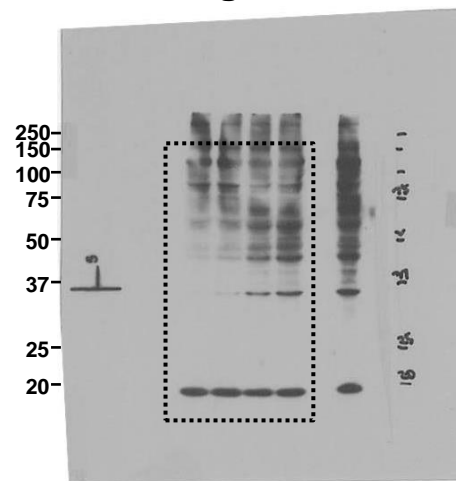


Supplementary Figure 3. Uncropped image for Figure 1.

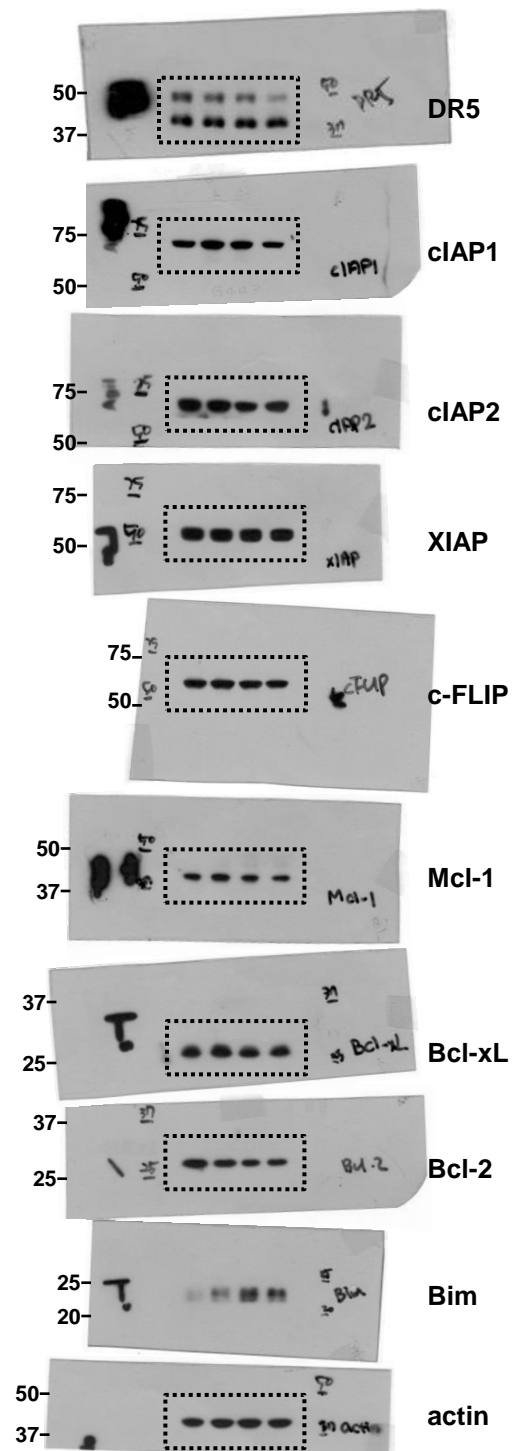
**Figure 3B**



**Figure 3C**

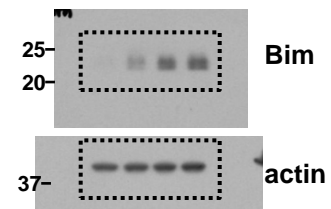


**Figure 3D**

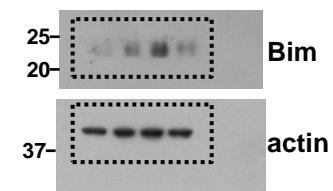


**Figure 3E**

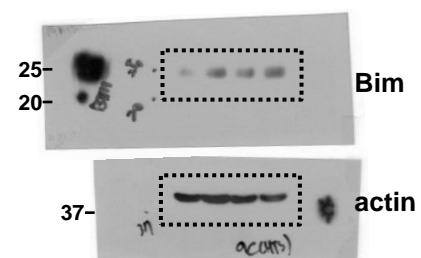
**ACHN**



**A498**

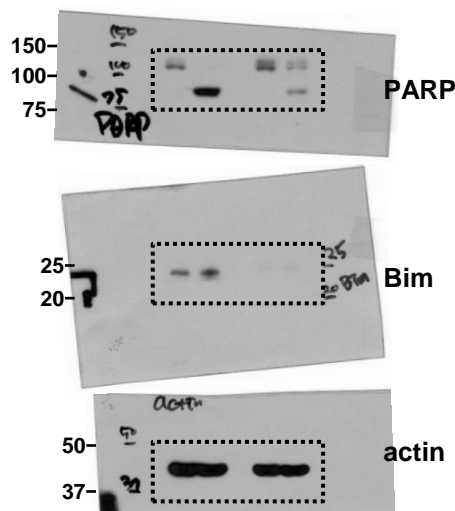


**DU145**

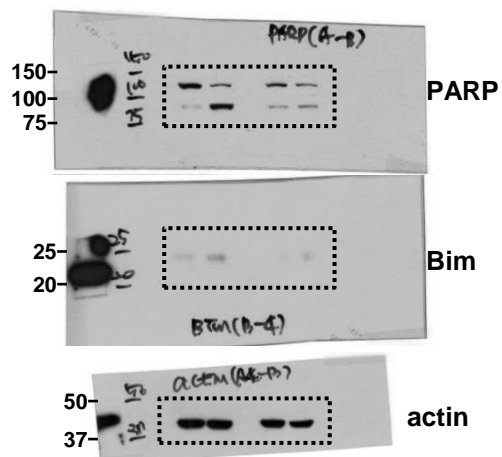


**Figure 4A**

**Caki**

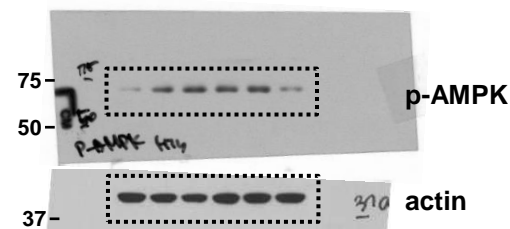


**A498**

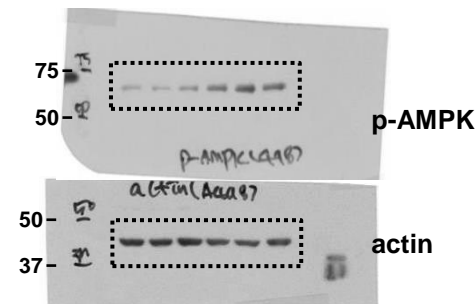


**Figure 4B**

**Caki**



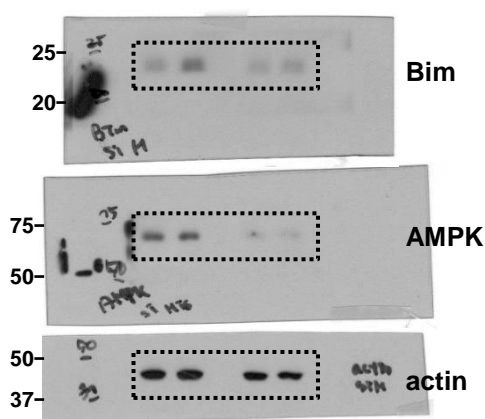
**A498**



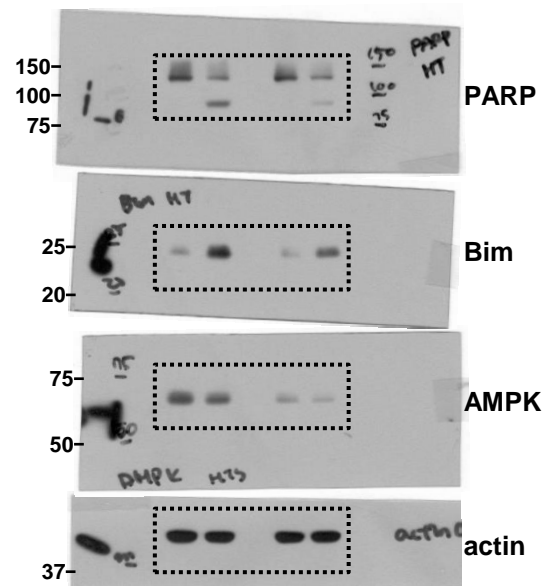
**Figure 4C**



**Figure 4D**

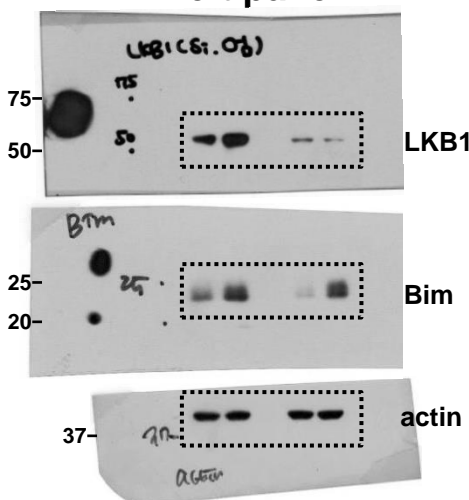


**Figure 4E**

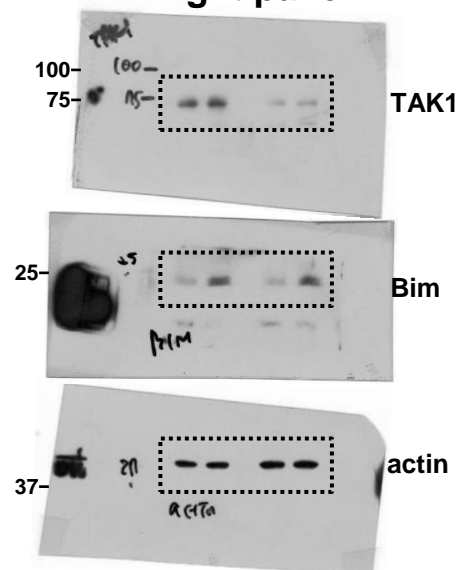


**Figure 4F**

**Left panel**

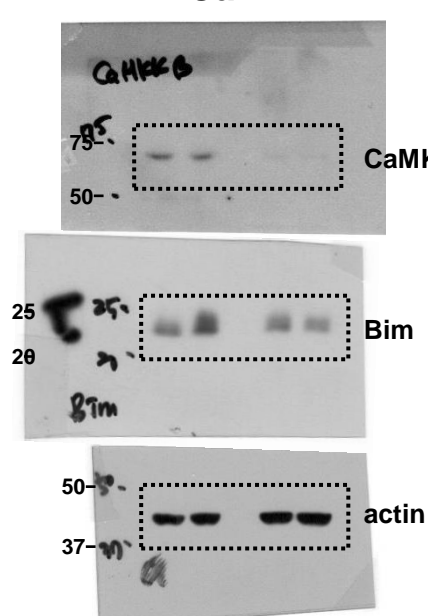


**Right panel**



**Figure 4G**

**Caki**



**A498**

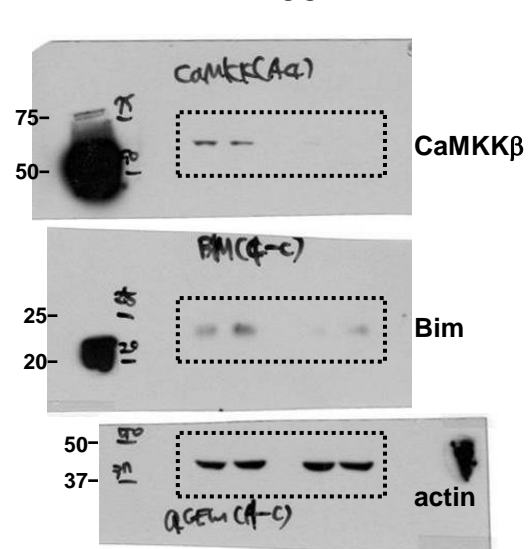


Figure 5A

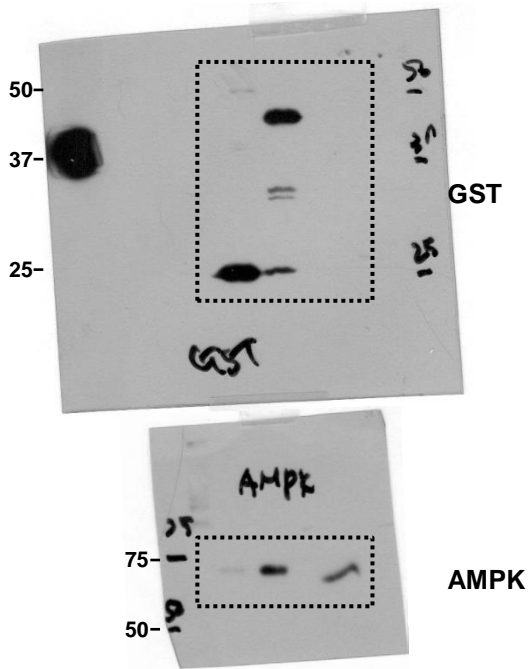


Figure 5B

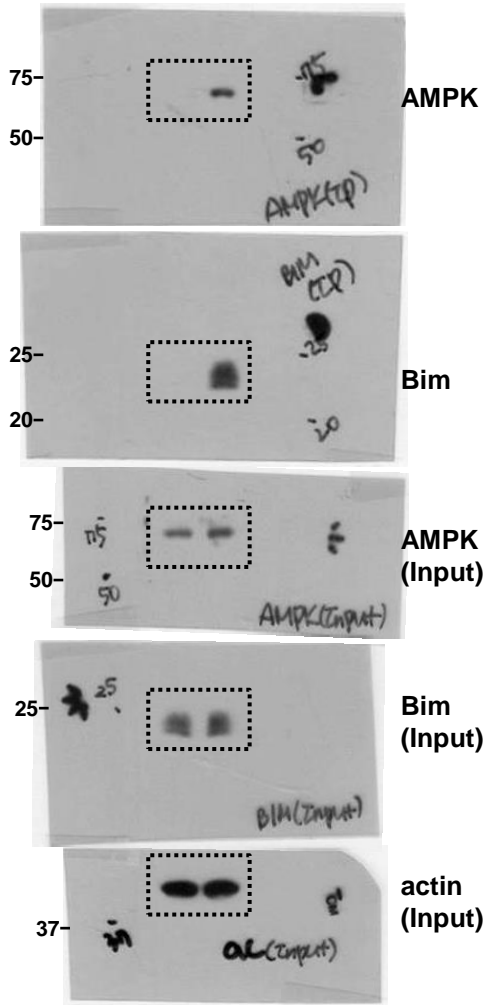


Figure 5C

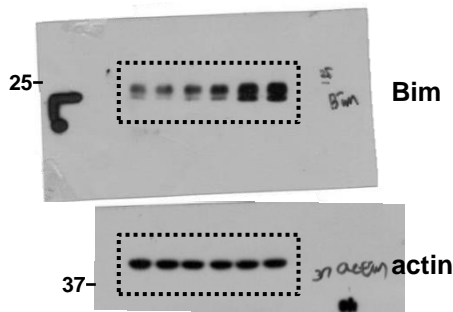


Figure 5D

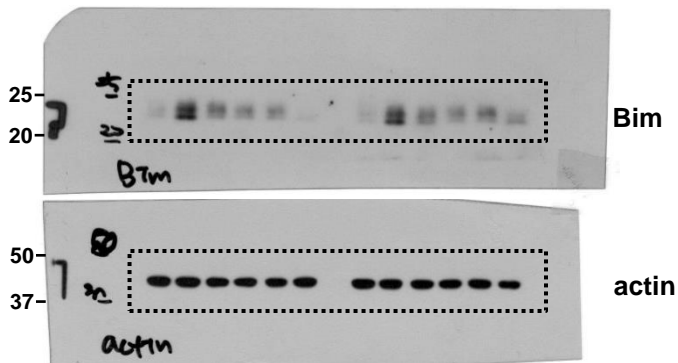


Figure 5F

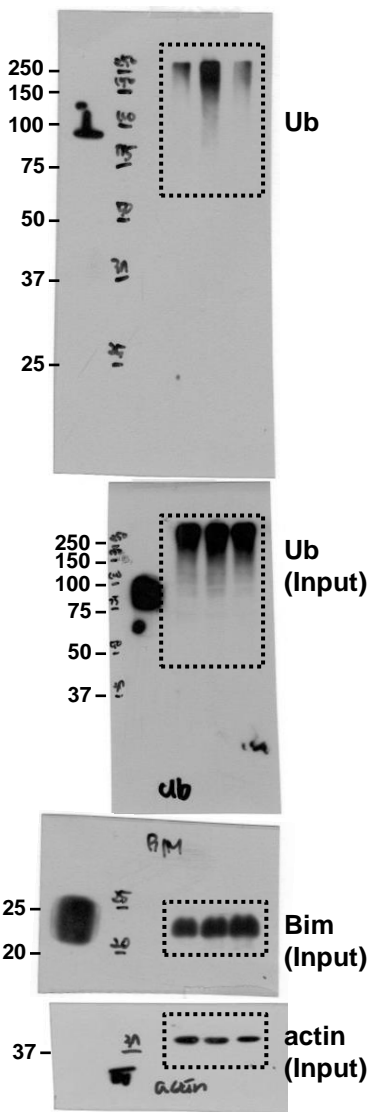


Figure 5G

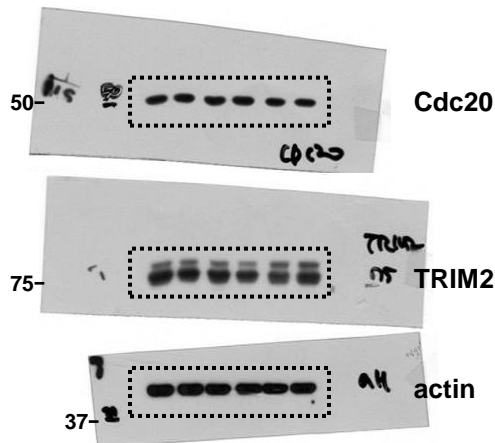
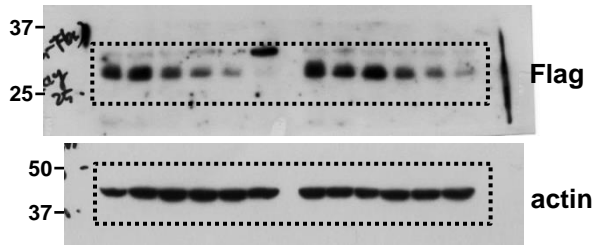
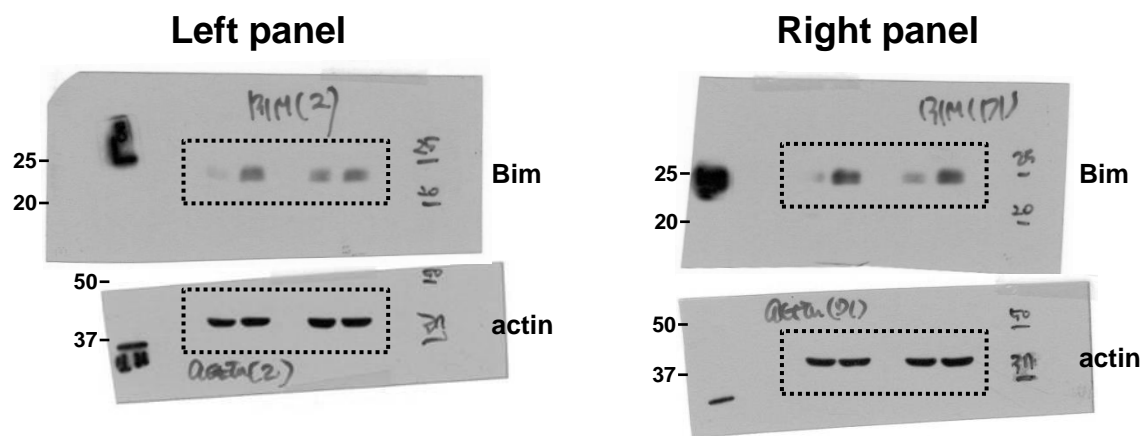


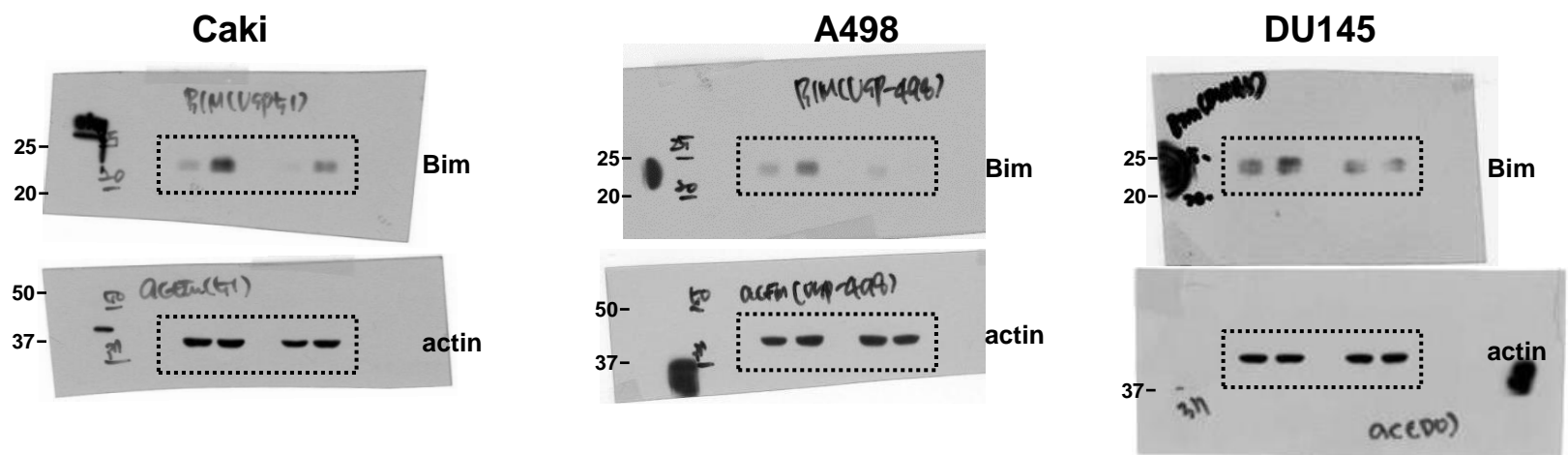
Figure 5E



**Figure 6B**



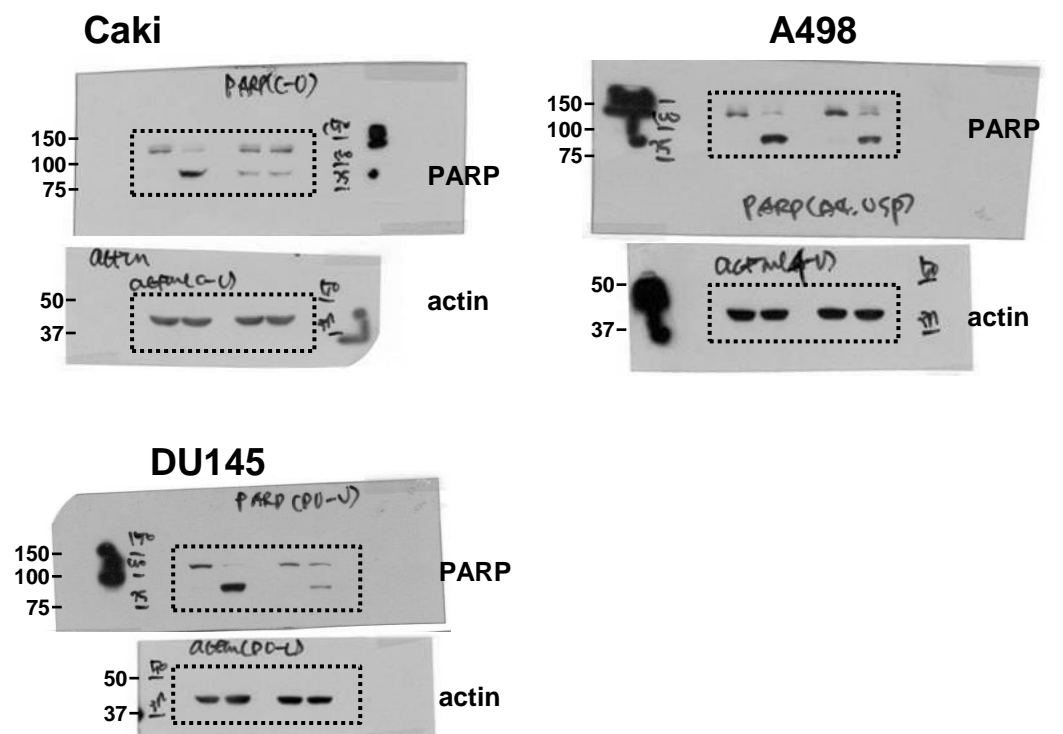
**Figure 6C**



**Figure 6D**

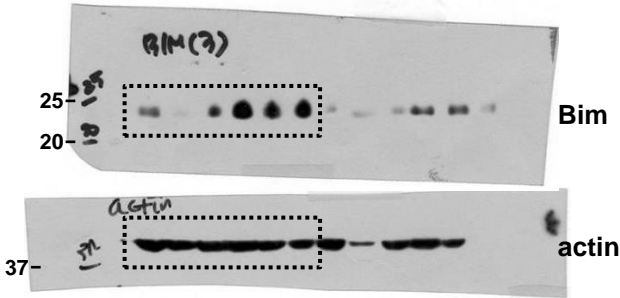


**Figure 6F**

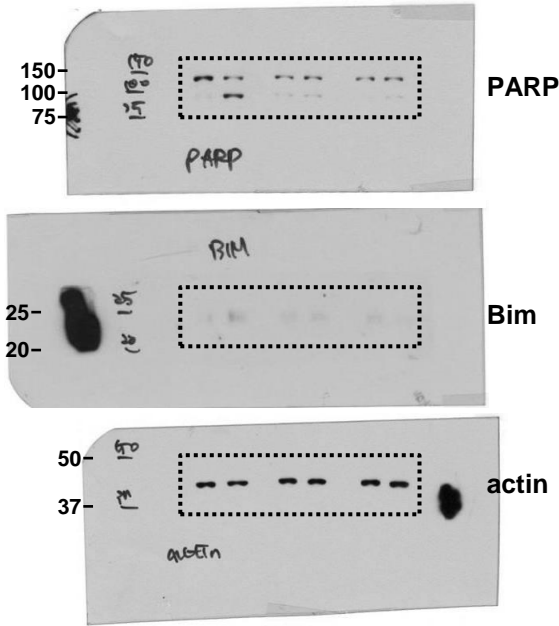


**Supplementary Figure 7. Uncropped image for Figure 6.**

Supplementary Figure 1.



Supplementary Figure 2.



Supplementary Figure 8. Uncropped image for supplementary Figure 1 and 2.