

Supplementary Materials

Deficiency of 15-LOX-1 Induces Radioresistance through Downregulation of MacroH2A2 in Colorectal Cancer

Yoo Jin Na, Bo Ram Kim, Jung Lim Kim, Sanghee Kang, Yoon A Jeong, Seong Hye Park, Min Jee Jo, Jeong-Yub Kim, Hong Jun Kim, Sang Cheul Oh and Dae-Hee Lee

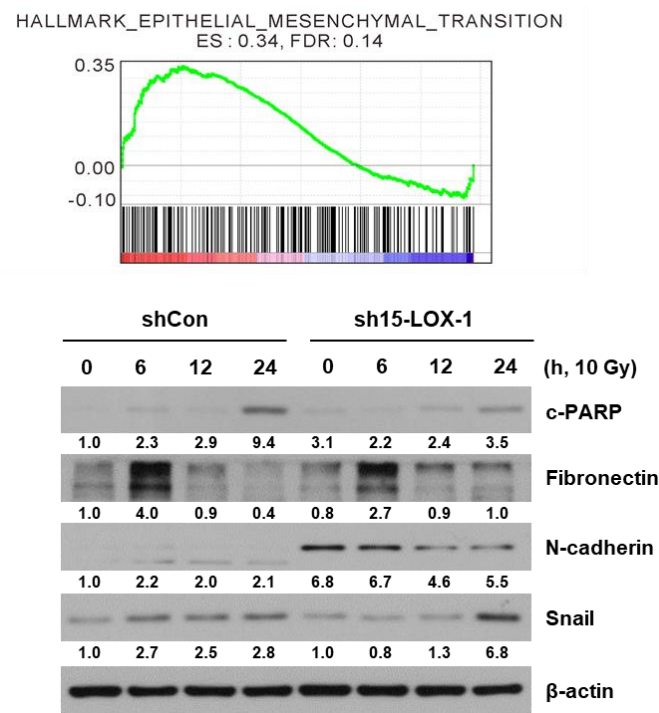


Figure S1. The markers of the epithelial-to-mesenchymal transition (EMT), especially N-cadherin, are significantly upregulated in sh15-LOX-1 stable cells.

Figure 1C

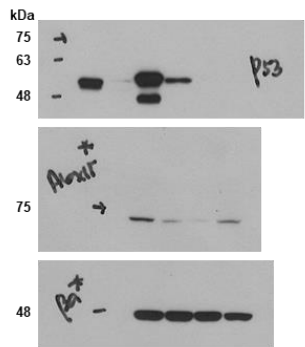


Figure 2A

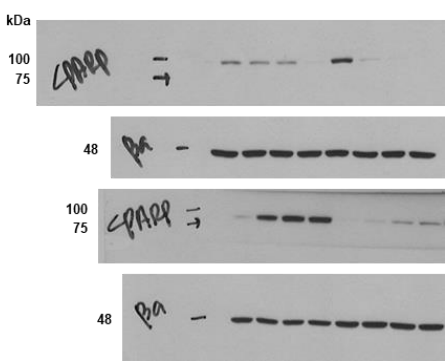


Figure 3A

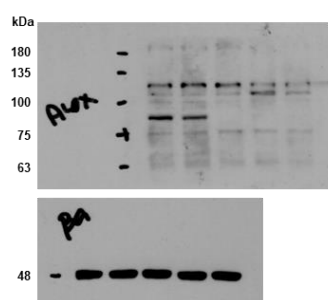


Figure 3C

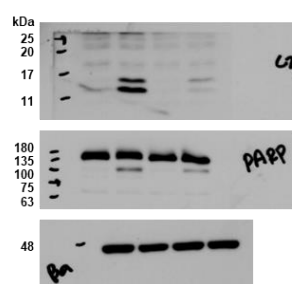


Figure 4C

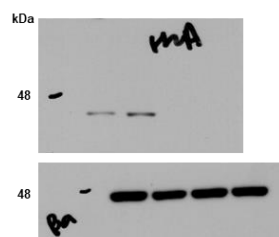


Figure 4E

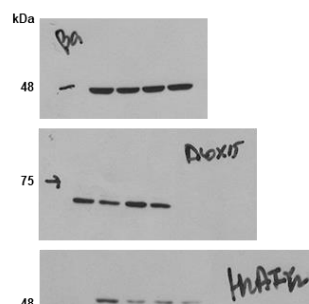


Figure 5B

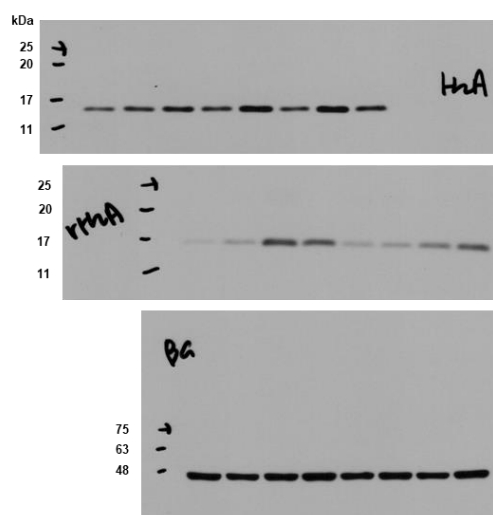
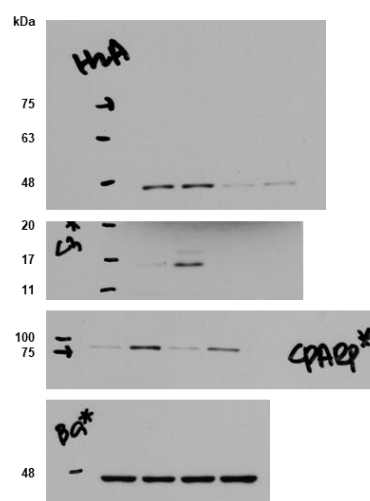


Figure 5F



Supplementary Figure S1

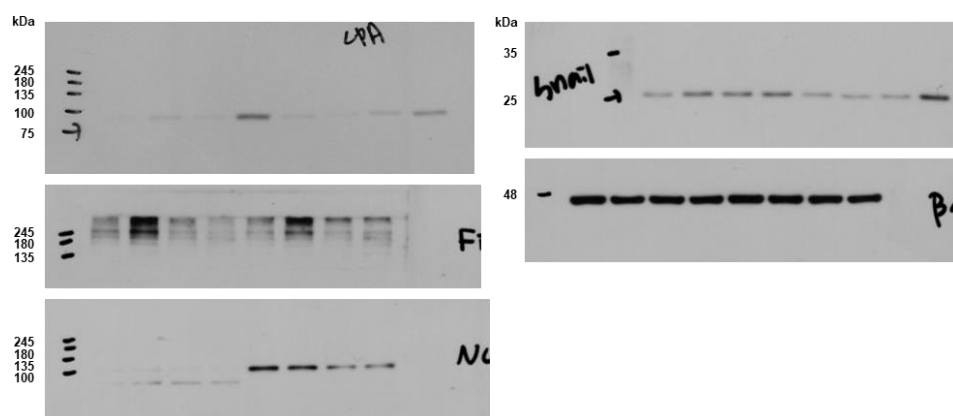


Figure S2. Immunoblots with molecular weight markers.



© 2019 by the authors. Licensee MDPI, Basel, Switzerland. This article is an open access article distributed under the terms and conditions of the Creative Commons Attribution (CC BY) license (<http://creativecommons.org/licenses/by/4.0/>).