

Figure S1. Total levels of CBP, p300, and β -catenin in PANC-1 cells treated with ICG-001 for 24 h. Treatment with ICG-001 does not change total nuclear β -catenin, CBP, and p300 levels.

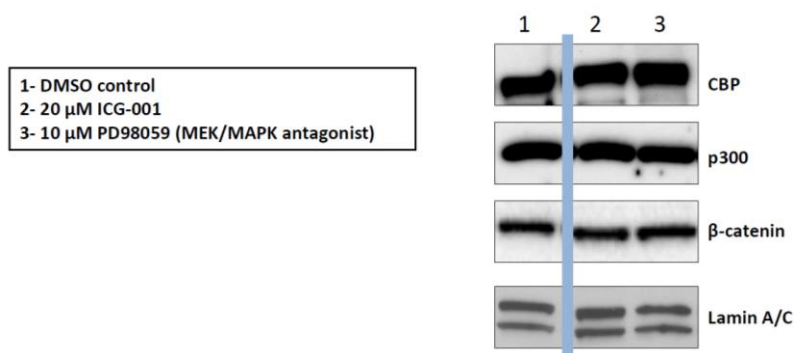


Figure S2. Total levels of CBP, p300, and β -catenin in PANC-1 cells treated with ICG-001 or PD98059 for 16 h. Treatment with ICG-001 or PD98059 does not change total nuclear β -catenin, CBP, and p300 levels. Blue dividing line indicates splice junction.