

Supplementary Materials: Development of LCEs with 100% Azobenzene Moieties: Thermo-Mechanical Phenomena and Behaviors

Domenico Sagnelli ^{*,†}, Massimo Rippa [†], Amalia D'Avino, Ambra Vestri, Valentina Marchesano and Lucia Petti

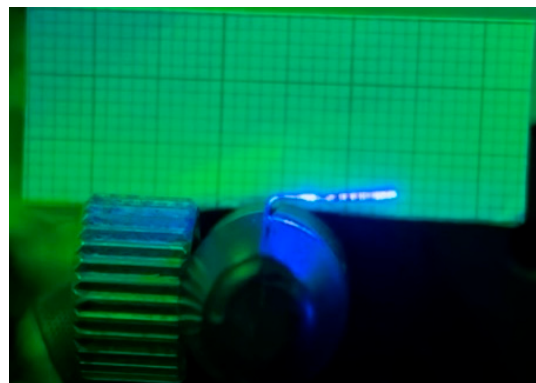
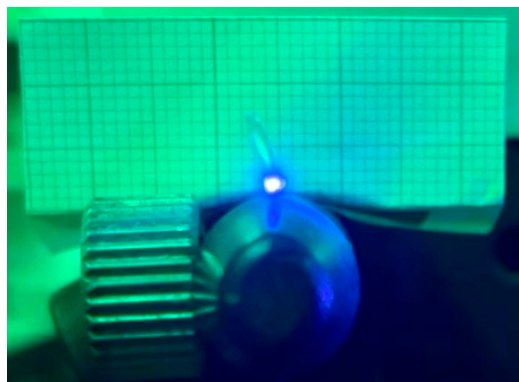
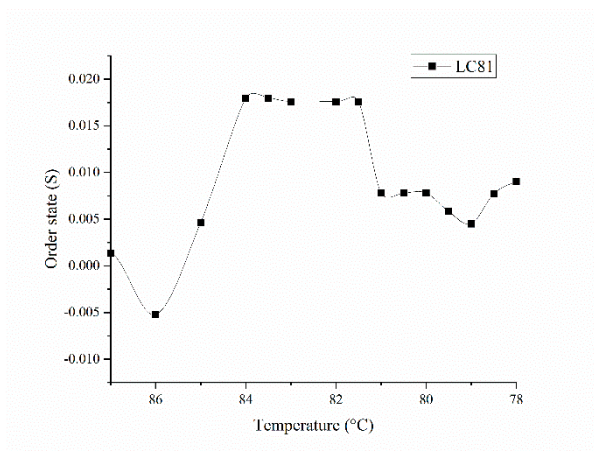
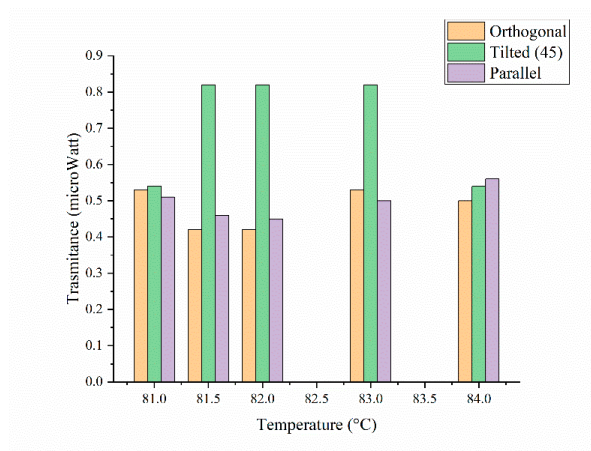


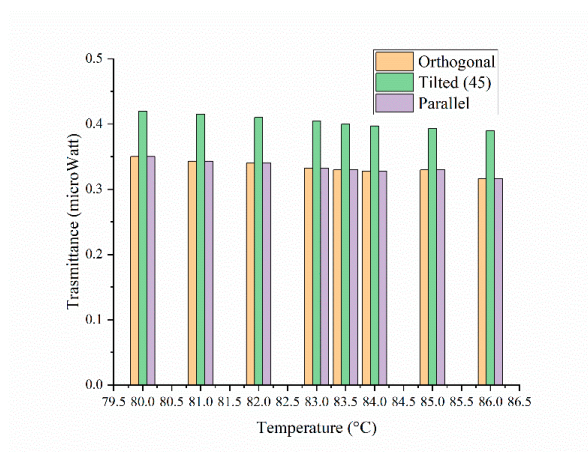
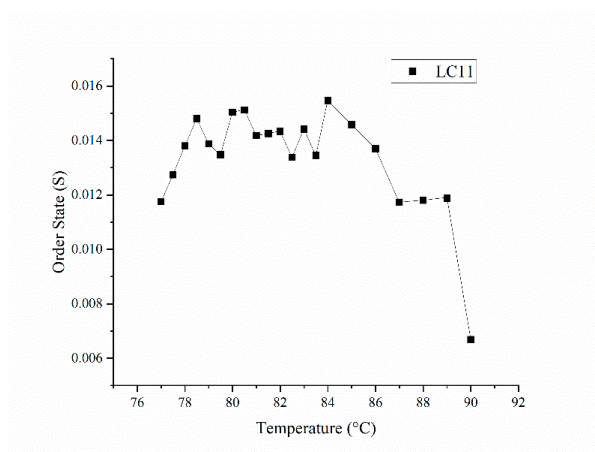
Figure S1. (Left) PMP polymerized in cells with 1% elvamide. (Right) PMP polymerized in cells with 6% elvamide.



(a)



(b)



(c)

(d)

Figure S2. (a) Order State of LC81, (b) Transmittance of LC81 between crossed polarizers (c) Order state of LC11, (d) Transmittance of LC11 between crossed polarizers.

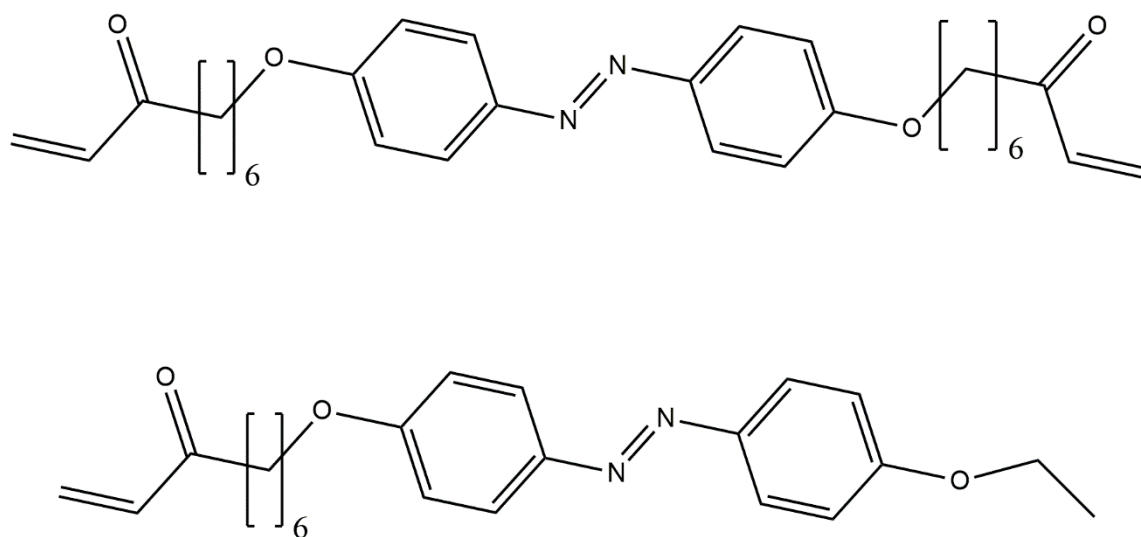


Figure S3;- Here are depicted the LC monomers used in this work. The monomers are mixed in two different molar ratios (8:1 1:1 1:8). Up) monomer A6zA6 down) monomer A6z2