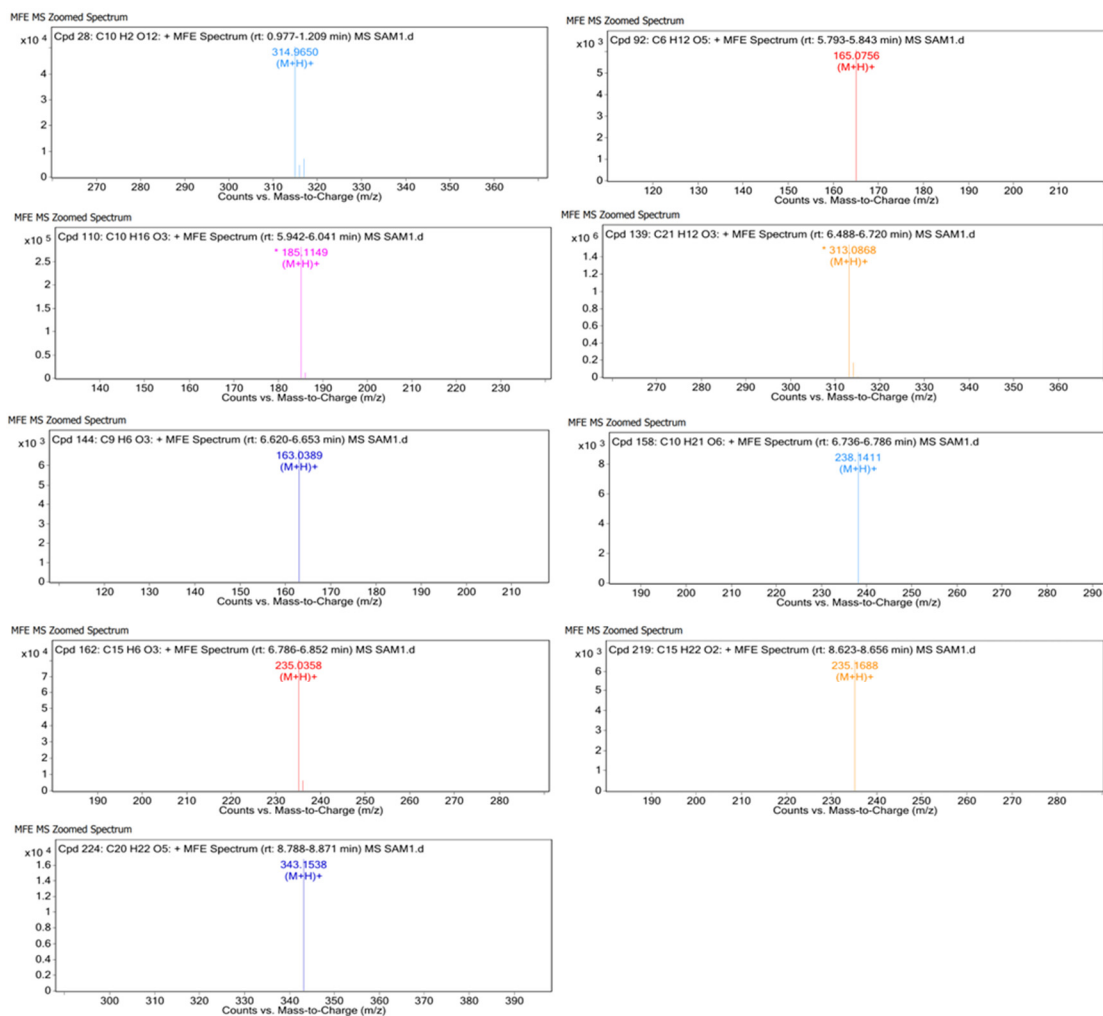


Supplementary Figure S1. Mass spectra of the removal of AFB1 mediated by WKGs. HPLC-Q-TOF-MS analyzed the content of AFB1 in brown sugar solution supplemented with 2 $\mu\text{g/mL}$ AFB1(up) and co-incubation cultures of 20% of WKGs and 2 $\mu\text{g/mL}$ AFB1 in brown sugar solution for 30 min (down).



Supplementary Figure S2. Mass spectra of degradation products for AFB1 by WKGs.