

Evaluation of the Susceptibility of Lotus Seeds (*Nelumbo nucifera* Gaertn.) to *Aspergillus flavus* Infection and Aflatoxin Contamination

Abdelrahman Elamin, Sharmin Sultana and Shohei Sakuda

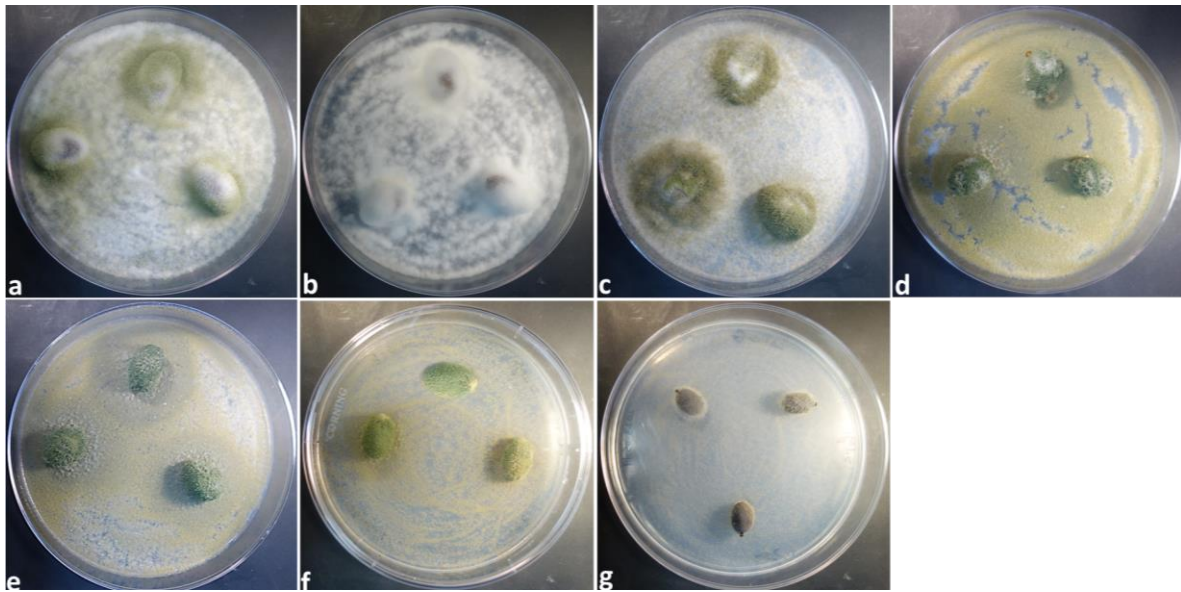


Figure S1. Artificial contamination of lotus seeds at different maturity (a–g) after 14 days incubation at 25°C. (a) lotus seeds of A stage. (b) lotus seeds of B stage. (c) lotus seeds of C stage. (d) lotus seeds of D stage. (e) lotus seeds of E stage. (f) lotus seeds of F stage. (g) lotus seeds of G stage.