

# Supplementary Materials: Emodin, an Emerging Mycotoxin, Induces Endoplasmic Reticulum Stress-Related Hepatotoxicity through IRE1 $\alpha$ -XBP1 Axis in HepG2 Cells

Su Been Park, Gun Hee Cho, Young Eun Park and Hyang Sook Chun

Table S1. List of primers used in qPCR

Gene	GenBank Accession number	Primer sequence	Product size (base pair)	Annealing temperatures of the primers
BiP (GRP78)	X87949	5'-GGTGACCTGGTACTGCTTGATG-3' 5'-CCTTGGATTTCAGTTTGGTCATG-3'	84bp	60 °C
CHOP (GADD153)	S40706	5'-CTTGGCTGACTGAGGAGGAG-3' 5'-TCACCATTCCGGTCAATCAGA-3'	312bp	60 °C
sXBP1	NM_001394000	5'-CTGAGTCCGAATCAGGTGCAG -3' 5'-ATCCATGGGGAGATGTTCTGG-3'	59bp	60 °C
IRE1	AF059198	5'-CTCAGAGACAGCGCGAGTAG-3' 5'-ATCTCAGCCTAGCTGTCCCA-3'	155bp	60 °C
$\beta$ -actin	HQ154074	5'-TCATCACCATTGGCAATGAG -3' 5'-CACTGTGTTGGCGTACAGGT-3'	154bp	60 °C

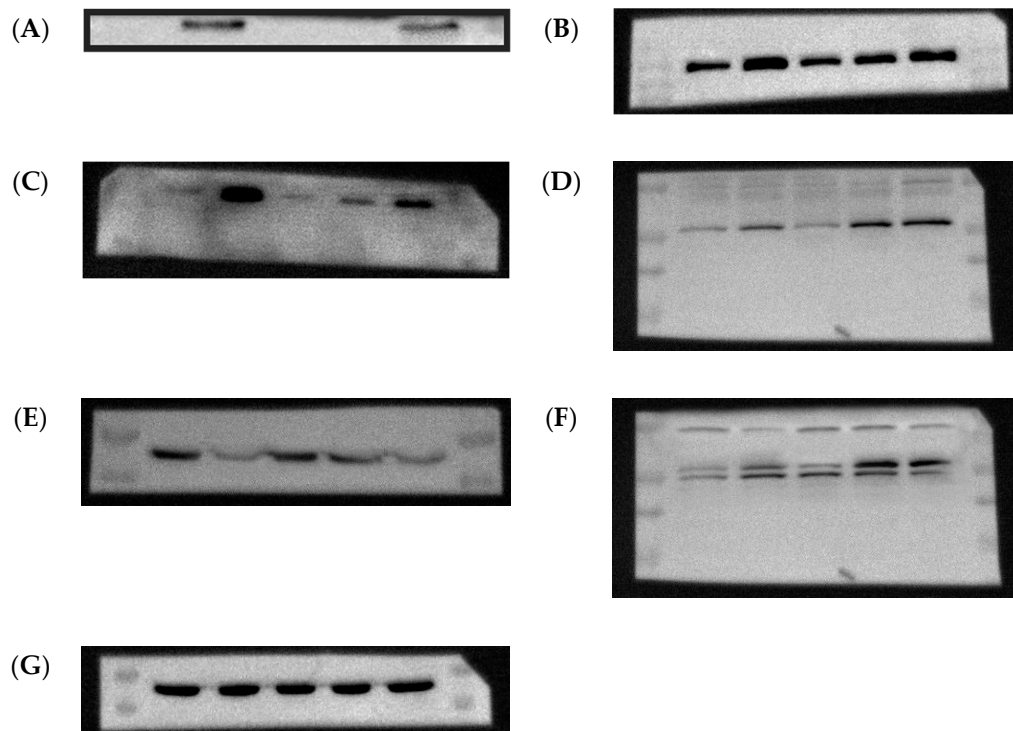


Figure S1. Original images of blot membranes in Figure 5(A). (A) Bip, (B) IRE1 $\alpha$ , (C) CHOP, (D) Bax, (E) Bcl-2, (F) Cleaved caspase-3 and (G)  $\beta$ -actin.

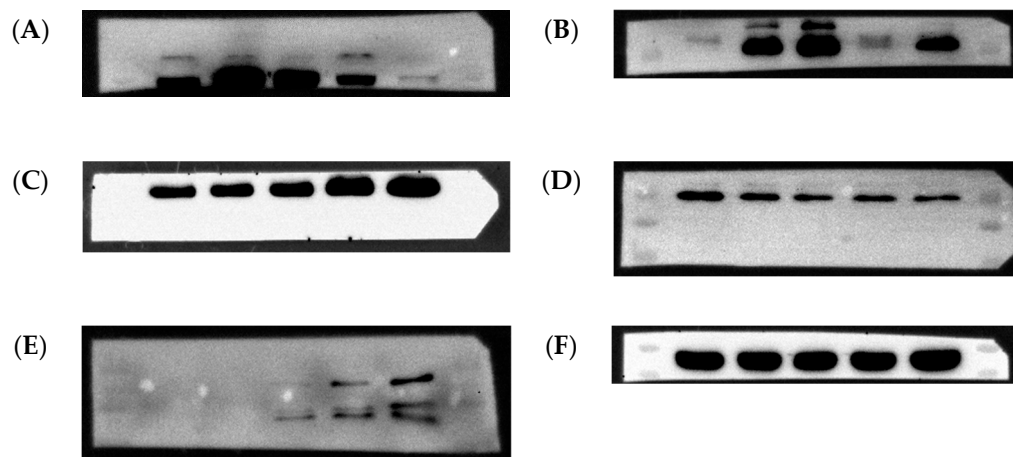


Figure S2. Original images of blot membranes in Figure 7(A). (A) Bip, (B) CHOP, (C) Bax, (D) Bcl-2, (E) Cleaved caspase-3 and (F)  $\beta$ -actin.

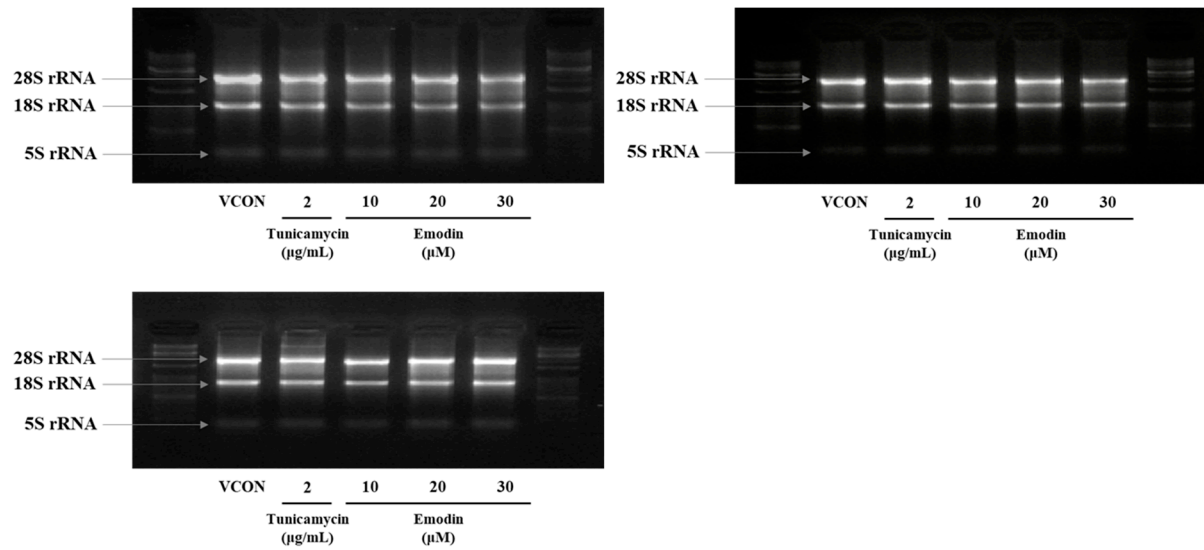


Figure S3. Agarose gel electrophoresis of all RNA samples used in qPCR analysis.

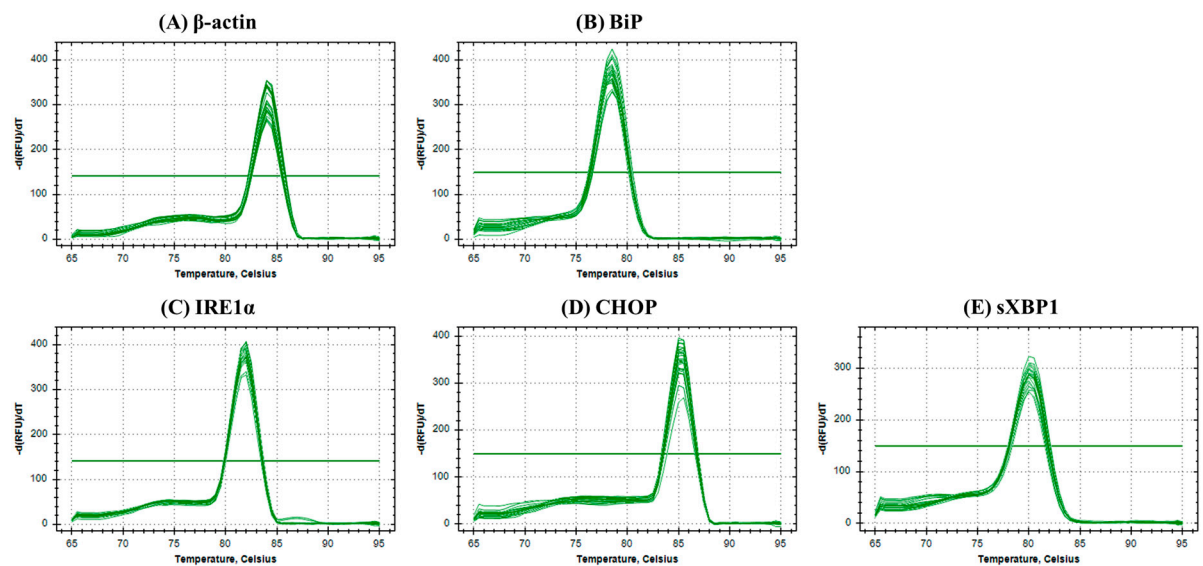


Figure S4. Melting curves of qPCR amplification. (A)  $\beta$ -actin, (B) BiP, (C) IRE1 $\alpha$ , (D) CHOP and (E) sXBP1.