

Supplementary Materials:

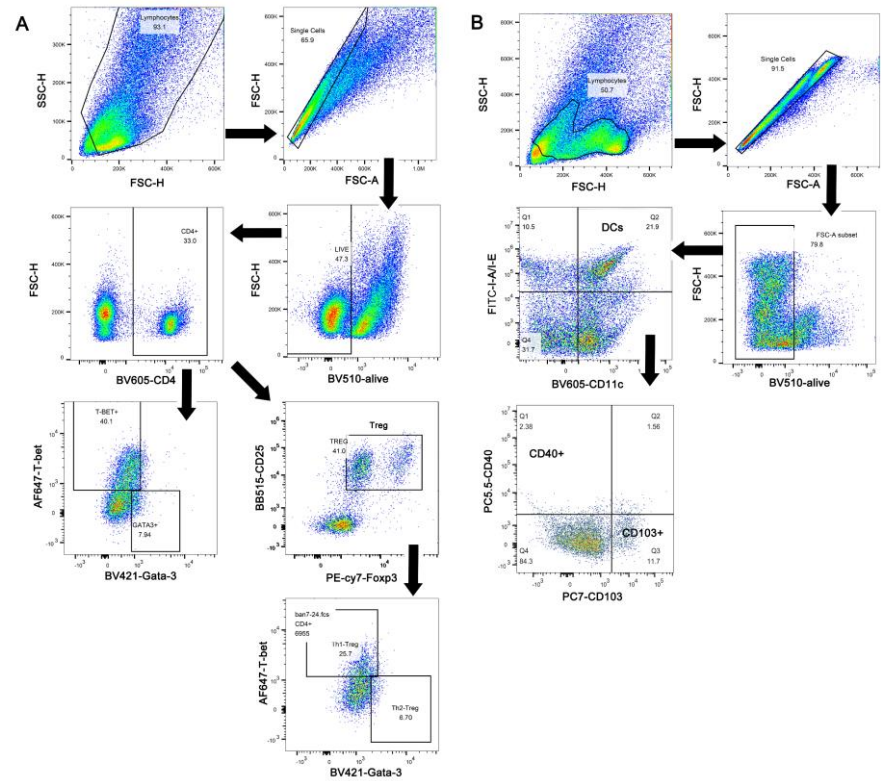


Figure S1. (A) The gating strategy of Th cells. (B) The gating strategy of DCs.

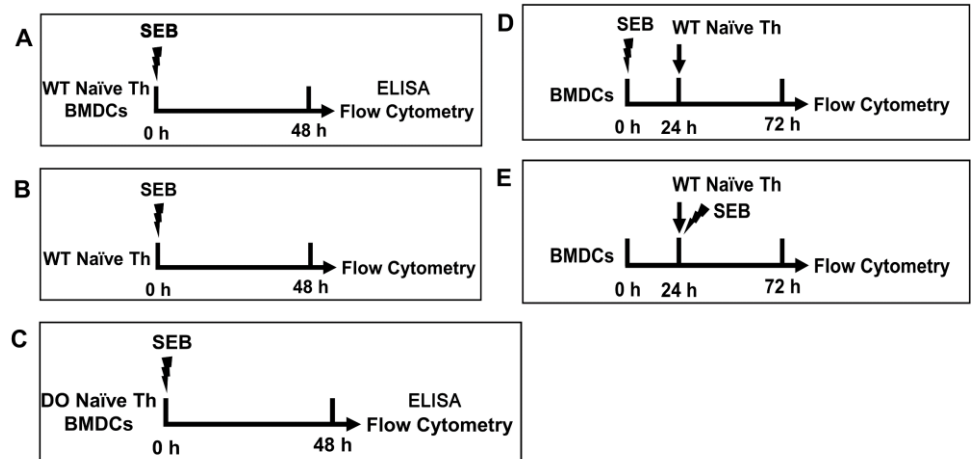


Figure S2. The model diagrams of cell stimulation. (A) WT naïve Th cells were co-cultured with BMDCs under stimulation of different doses of SEB. (B) WT naïve Th cells were stimulated with different doses of SEB. (C) WT naïve Th cells were co-cultured with BMDCs under stimulation of different doses of SEB. (D) BMDCs were pre-stimulated with different doses of SEB and then co-cultured with WT naïve Th cells. (E) BMDCs were pre-cultured in the plate and then co-cultured with WT naïve Th cells under stimulation of different doses of SEB.