
Supplementary Materials

Melittin Tryptophan Substitution with a Fluorescent Amino Acid Reveals the Structural Basis of Selective Antitumor Effect and Subcellular Localization in Tumor Cells

Yonghui Lv, Xu Chen, Zhidong Chen, Zhanjun Shang, Yongxiao Li, Wanting Xu, Yuan Mo
Xinpei Wang, Daiyun Xu, Shengbin Li, Zhe Wang, Meiying Wu and Junqing Wang

Figure S1. (a) Mass spectra analyse of Melittin. MS characterization: M.W. = 2846.53 Da; found: 2846.73 Da. **(b)** Identifications of peaks in the HPLC chromatogram. The Melittin, which eluted with 1 mL/min, injection volume: 10 μ L, detection wavelength: 220 nm, purity: 99.03%.

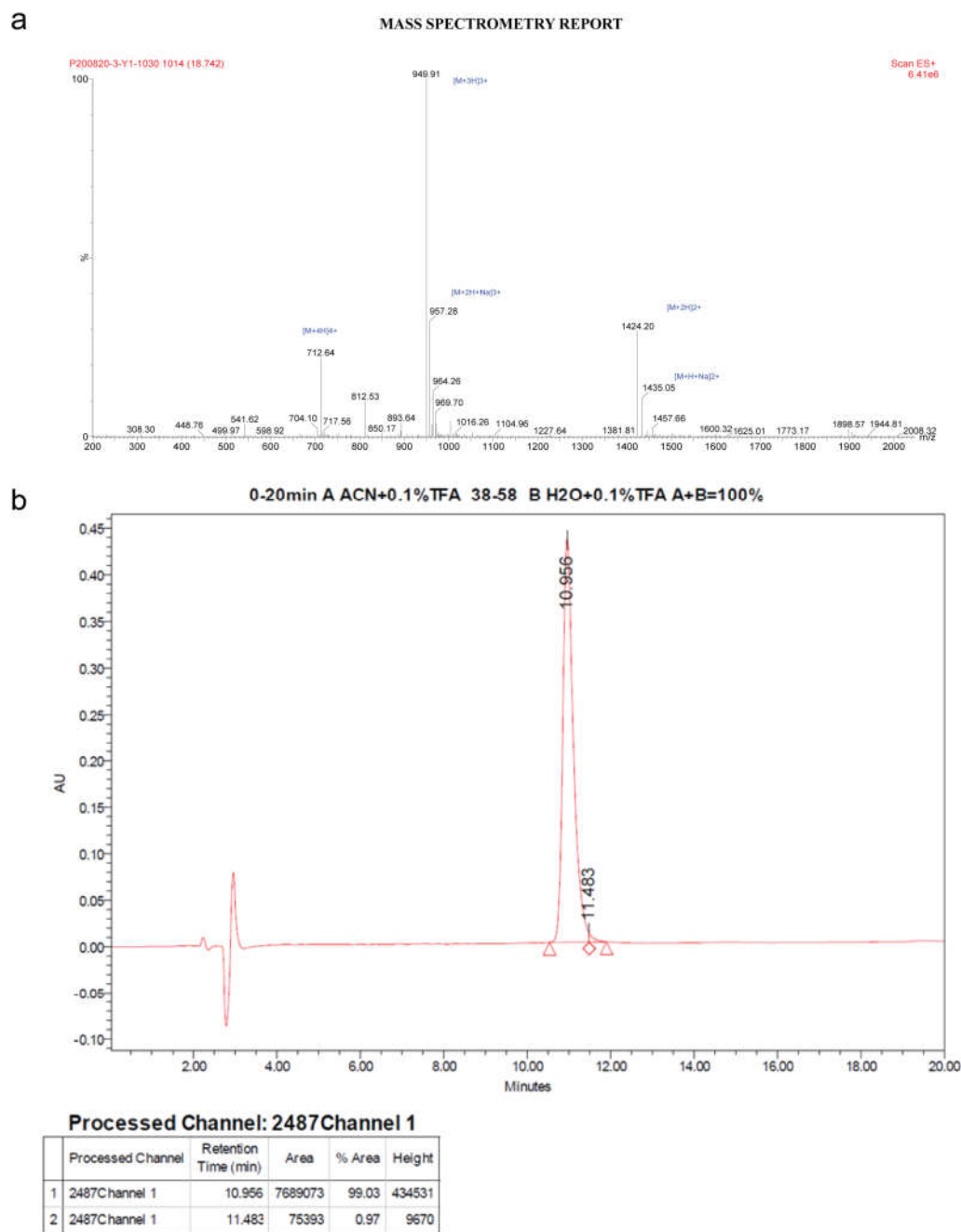


Figure S2. (a) Mass spectra analyse of MEL^{FL}. MS characterization: M.W. = 2962 Da; found: 2961.2 Da. (b) Identifications of peaks in the HPLC chromatogram of MEL^{FL}, which eluted with 1 mL/min, injection volume: 10 μ L, detection wavelength: 220 nm, purity: 99.62%.

