

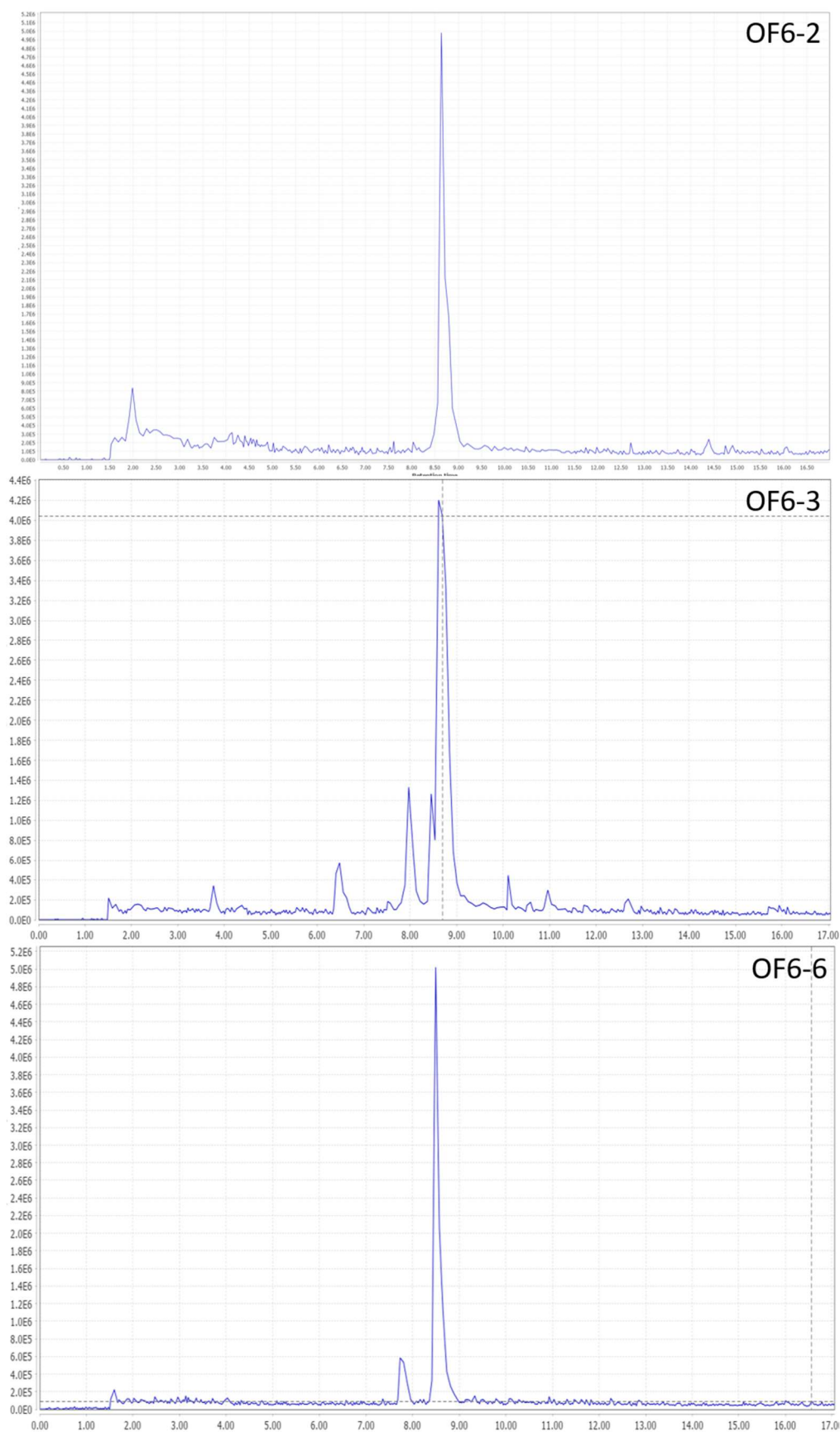
Article

On the Hunt for New Toxin Families Produced by a Mediterranean Strain of the Benthic Dinoflagellate *Ostreopsis cf. ovata*

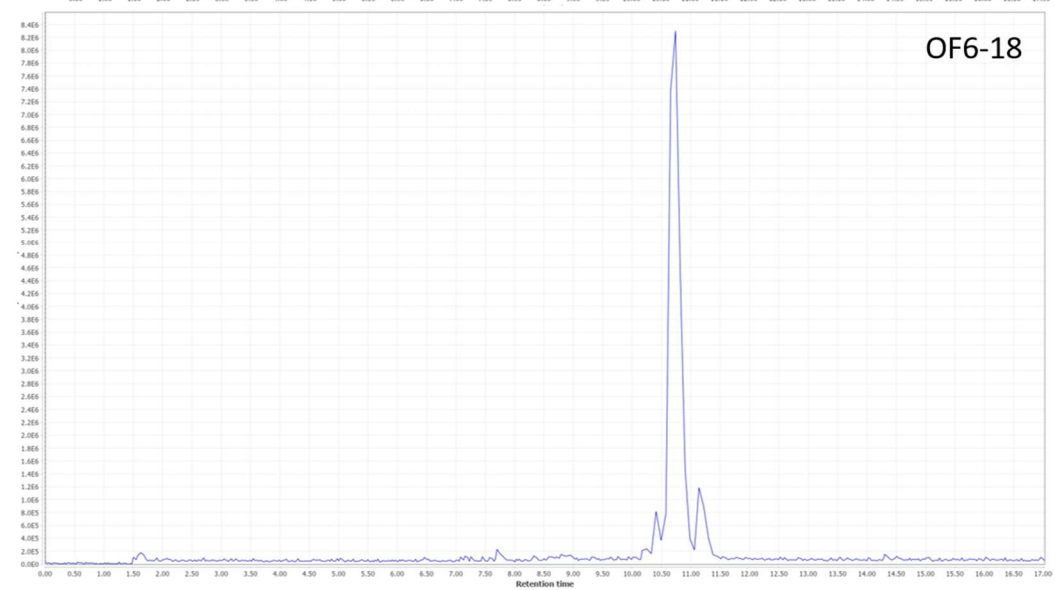
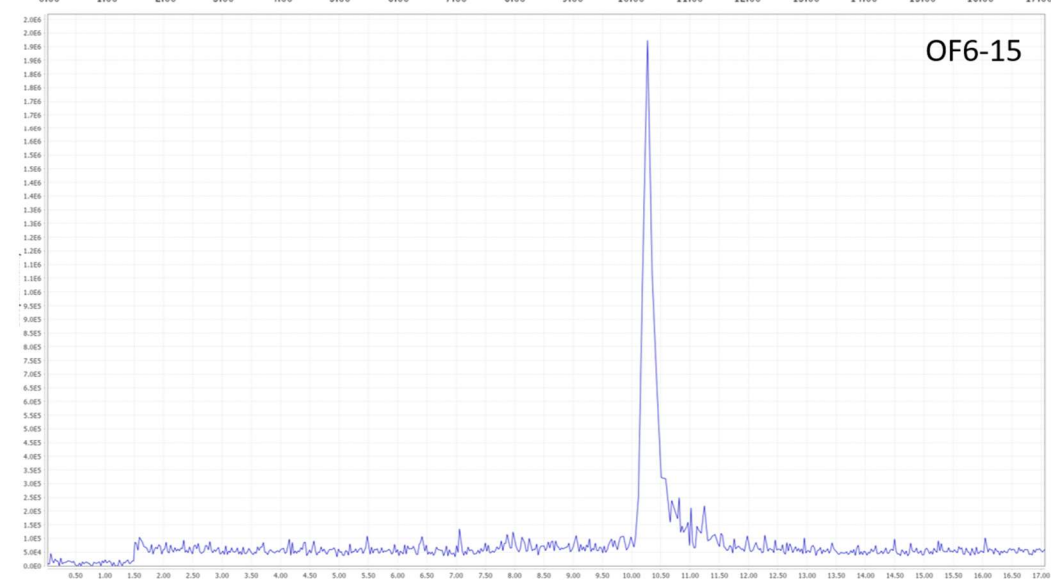
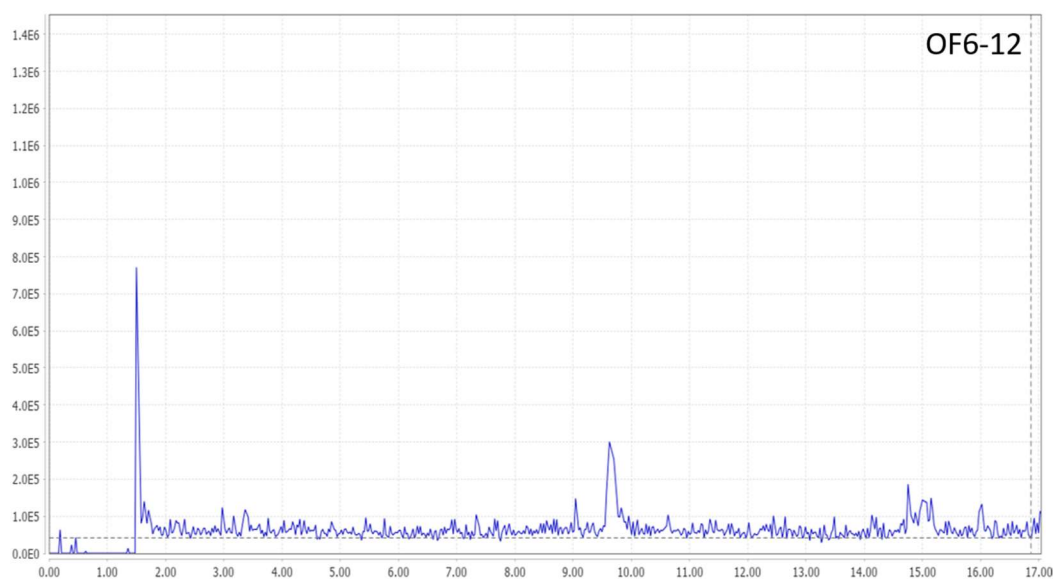
Eva Ternon, Evgenia Glukhov, Emily Trytten, Rodolphe Lemée and William Gerwick

Table S1. Overall summary of NCI-H460 cell line concentration-response curves including CC₅₀ and R² values (≥ 0.89) for each curve. Cell cytotoxicity values are expressed in $\mu\text{g/mL}$.

COMPOUND ID	A	B	C	AVG, $\mu\text{g/mL}$	error, $\mu\text{g/mL}$	% ERROR	R2 A	R2 B	R2 C
OF6-2	5.65E-01	7.20E-01	7.46E-01	0.68	0.10	10	0.9711	0.9748	0.986
OF6-3	1.41E+00	1.49E+00	1.32E+00	1.40	0.08	8	0.9144	0.8721	0.96
OF6-6	5.24E-01	8.38E-01	7.07E-01	0.69	0.16	16	0.9831	0.9686	0.9807
OF6-12	3.06E+00	3.28E+00	3.04E+00	3.12	0.13	13	0.9468	0.981	0.9522
OF6-15	1.12E+00	1.56E+00	1.16E+00	1.28	0.24	24	0.8853	0.9812	0.9449
OF6-18	9.56E-01	6.80E-01	6.59E-01	0.76	0.17	17	0.9462	0.9801	0.9748
PLTX	4.02E-05	5.34E-05	4.04E-05	4.5E-05	7.6E-06	0	0.9907	0.9864	0.9665
OF6-MIX	1.58E-01	1.36E-01	1.26E-01	0.14	0.02	2	0.9884	0.9908	0.9543
DOX	1.49E-01	2.02E-01	1.87E-01	0.18	0.03	3	0.9866	0.9728	0.9457



(A)



(B)

Figure S1. (A) Low-resolution mass spectra for the LGTX (top panel) and (B) the RVTX (bottom panel) acquired in the full scan positive mode.

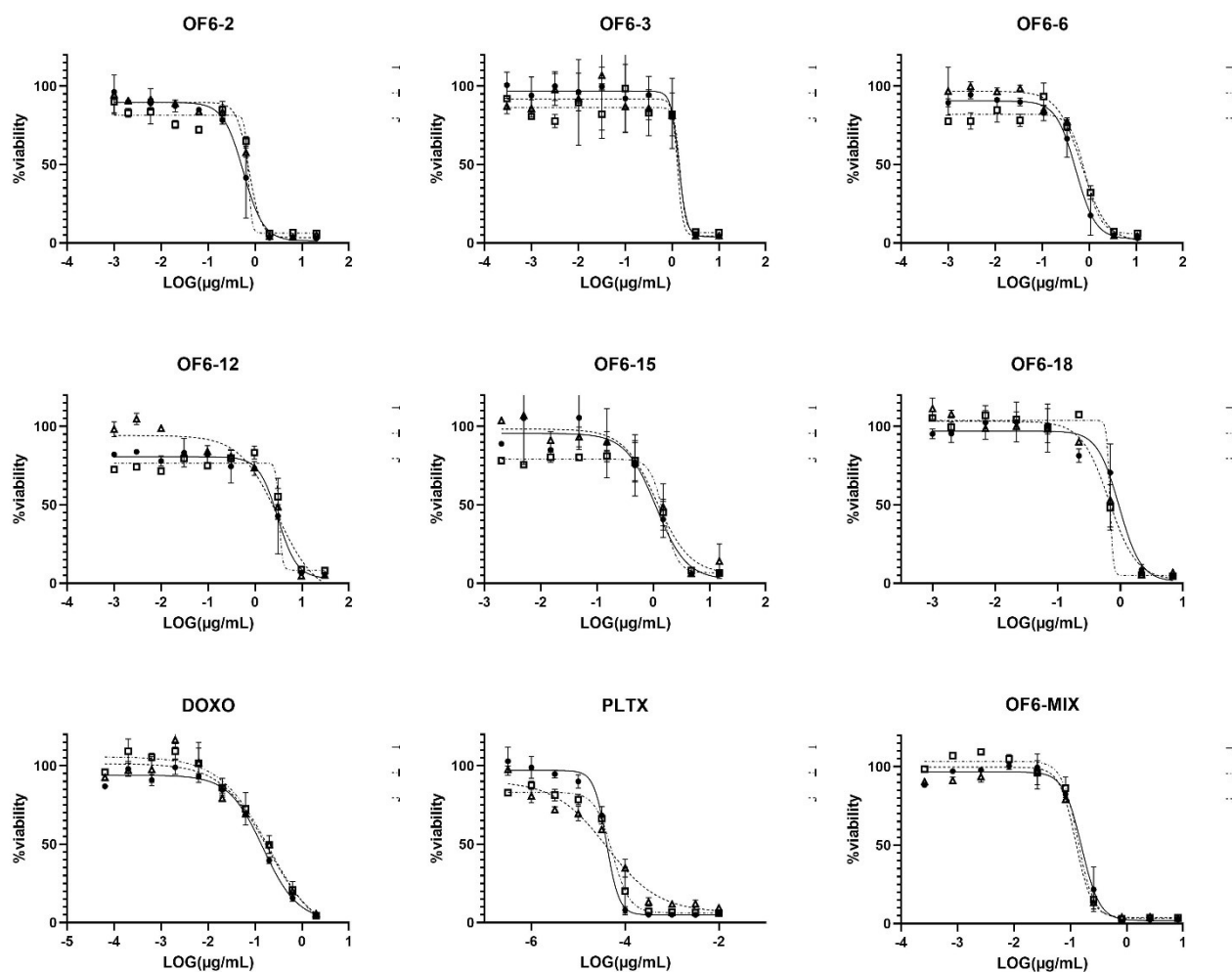


Figure S2. Concentration-response curves for all purified fractions of OF6-2 to 6 , LGTX (top panel) and the OF12-18, RVTX (second panel), as well as their mixture (OF6-MIX), PLTX and doxorubicin (positive control) (bottom panel), concentrations expressed as weights/volume ($\mu\text{g/mL}$). Curves were created using log(inhibitor) vs. response -- Variable slope (four parameters) function prepared in GraphPad 9.3.1.