

Supplementary Materials

Centrifugation-Assisted Solid-Phase Extraction Coupled with UPLC-MS/MS for the Determination of Mycotoxins in ARECAE Semen and Its Processed Products

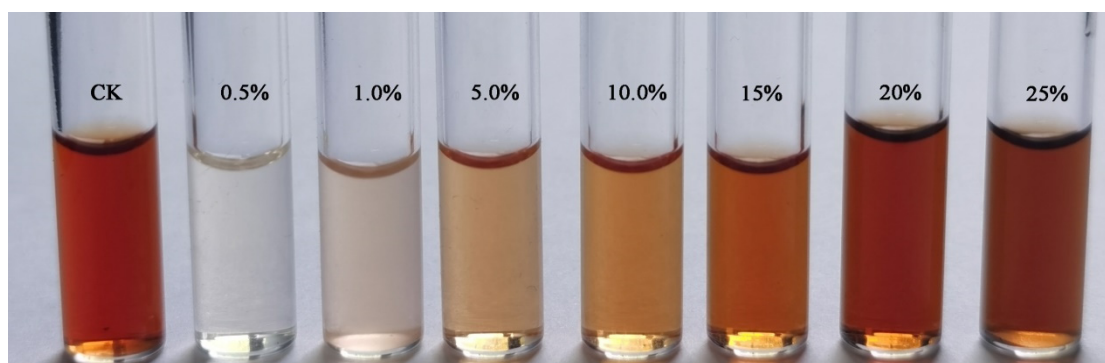


Figure S1. Effect of different concentrations of acetic acid on the color of SPE purified solution.

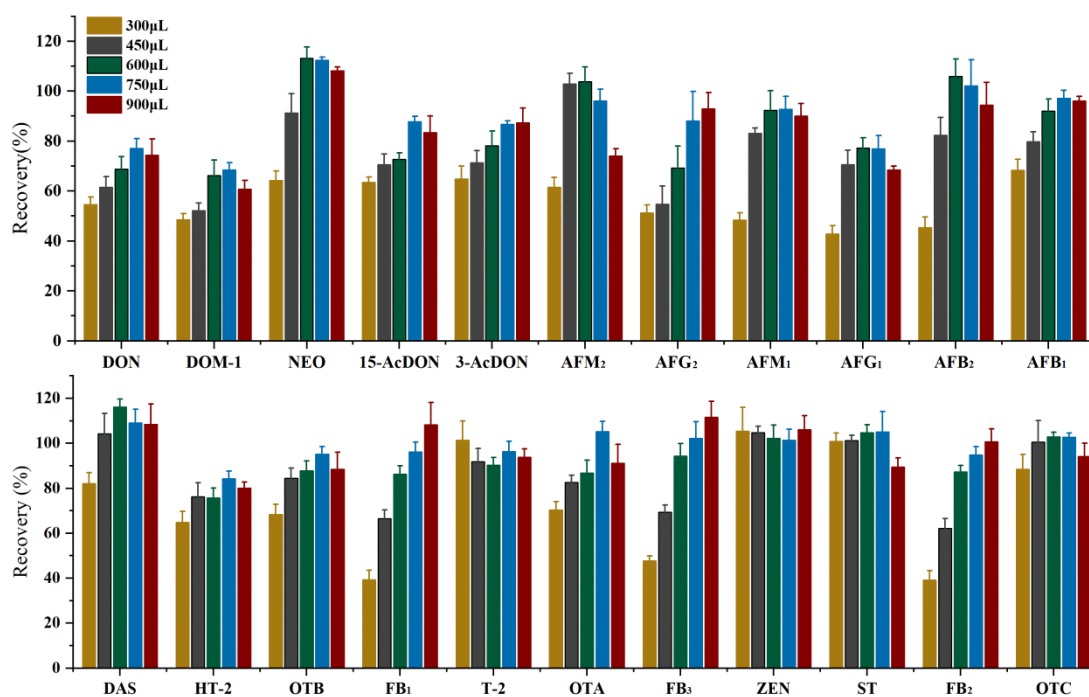


Figure S2. Effect of SPE loading volumes on the recoveries of selected mycotoxins.

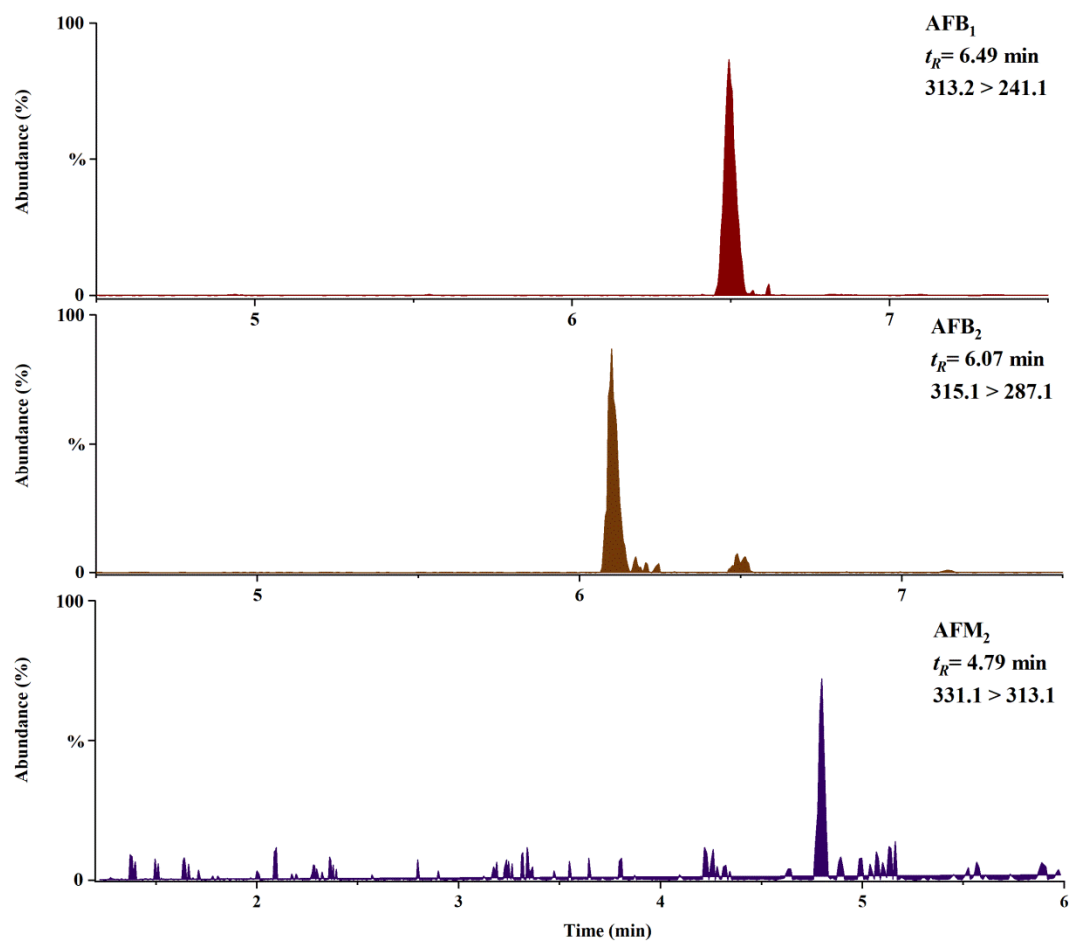


Figure S3. MRM chromatograms of positive WBL-4 sample

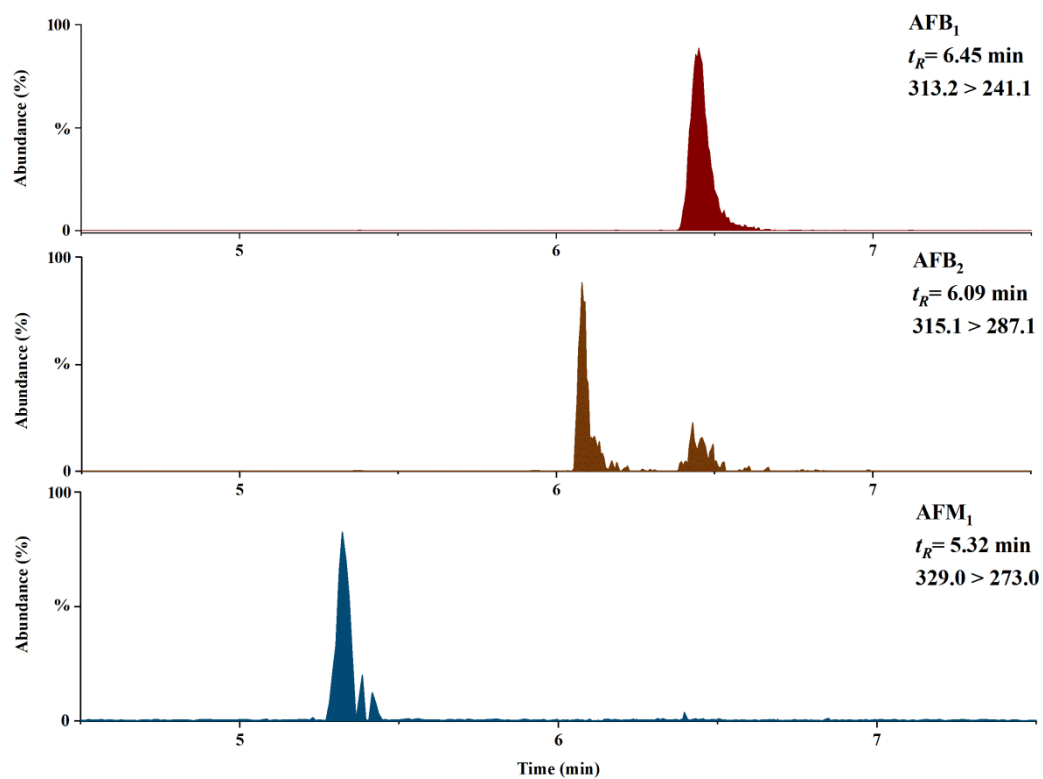


Figure S4. MRM chromatograms of positive BLS-2 sample

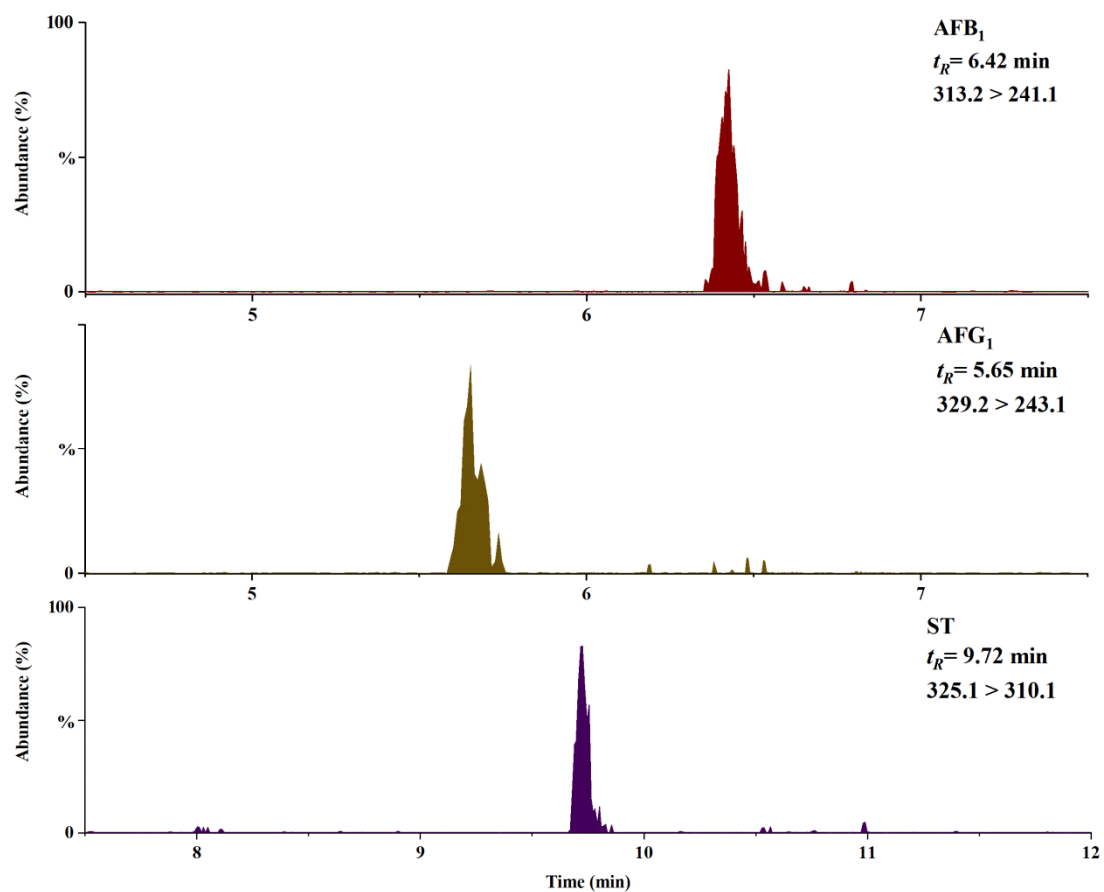


Figure S5. MRM chromatograms of positive BLS-15 sample

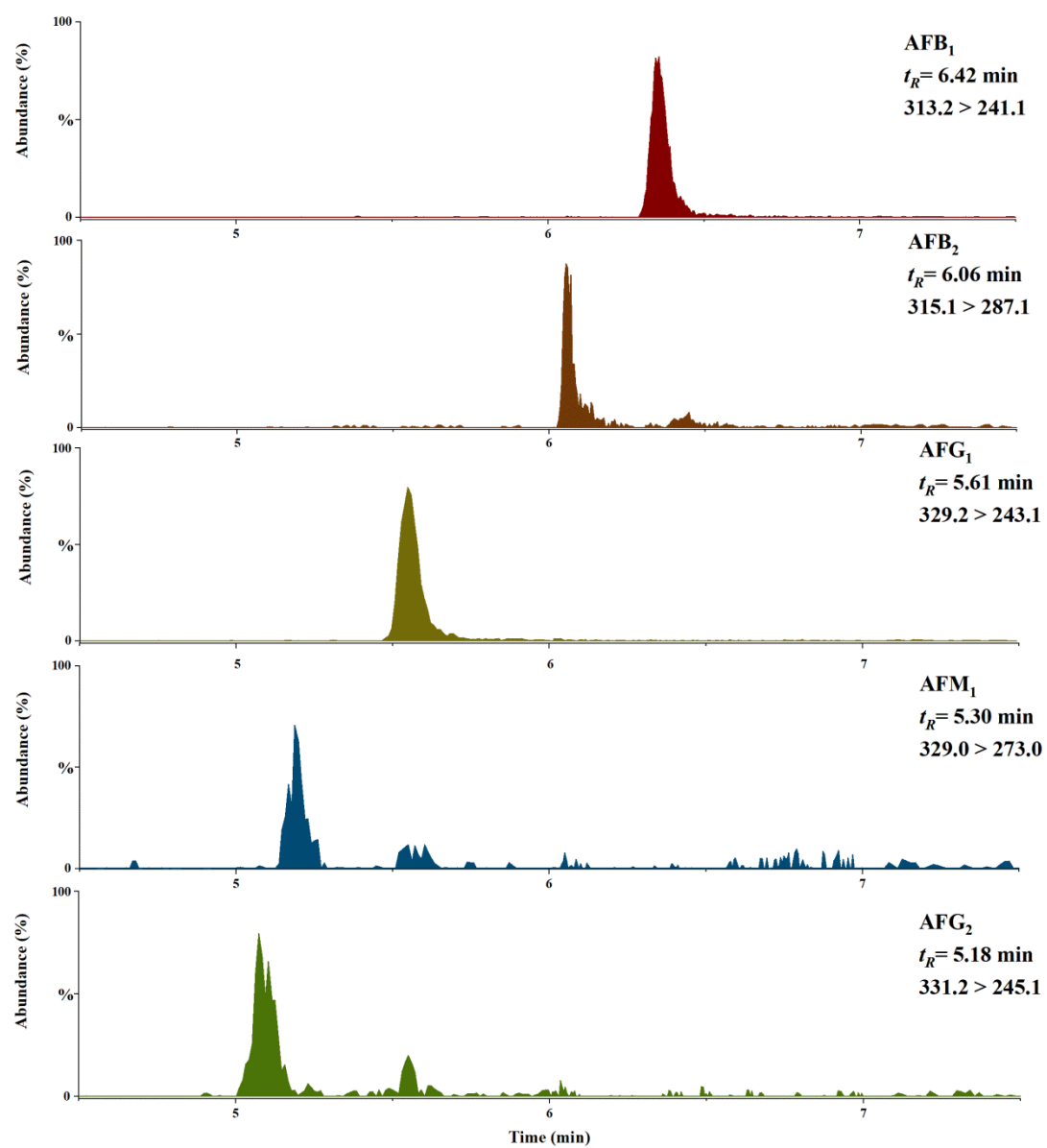


Figure S6. MRM chromatograms of positive JBL-15 sample

Table S1. Recoveries of selected mycotoxins in WBL, JBL and DFP

Mycotoxins	WBL		JBL		DFP	
	Recovery (%)	RSD (%)	Recovery (%)	RSD (%)	Recovery (%)	RSD (%)
DON	72.87	8.09	67.45	7.41	70.88	8.74
DOM-1	73.46	8.43	70.04	5.76	65.33	9.42
NEO	103.42	9.78	108.44	10.73	112.87	7.76
3-AcDON	89.36	5.77	92.14	7.56	93.87	3.93
15-AcDON	84.05	5.85	94.33	4.68	103.49	7.16
AFM ₂	91.06	5.47	88.67	3.84	90.67	7.28
AFG ₂	90.81	6.59	82.45	7.15	79.58	3.09
AFM ₁	86.04	3.52	88.39	5.78	84.67	5.47
AFG ₁	74.16	6.44	72.61	8.42	75.38	12.37
AFB ₂	96.14	3.76	95.08	3.86	92.76	8.94
AFB ₁	103.60	4.28	107.21	4.36	111.87	7.44
DAS	107.99	13.87	102.59	9.82	109.43	10.84
HT-2	77.93	6.08	84.42	6.53	92.69	8.67
OTB	96.49	4.38	88.86	6.25	94.51	3.64
FB ₁	88.54	11.73	90.08	5.29	81.35	6.85
T-2	95.56	3.79	89.74	6.58	93.27	4.09
OTA	95.79	8.72	99.07	9.03	94.23	5.13
FB ₃	84.79	12.19	87.46	10.54	79.59	9.45
ZEN	90.77	5.47	105.74	8.53	103.43	3.38
ST	99.53	4.39	103.46	5.57	98.82	4.19
FB ₂	96.37	6.24	98.89	8.11	77.58	8.49
OTC	106.24	7.68	103.87	11.67	96.54	7.23

Spike level: 5.0 µg/kg for AFB₁, AFB₂, AFG₁, AFG₂, AFM₁, and AFM₂; 25.0 µg/kg for OTA, OTB, and OTC; 50.0 µg/kg for DON, DOM-1, HT-2, T-2, ST, ZEN, 15-Ac DON, 3-Ac DON NEO, and DAS; and 125.0 µg/kg for FB₁, FB₂, and FB₃