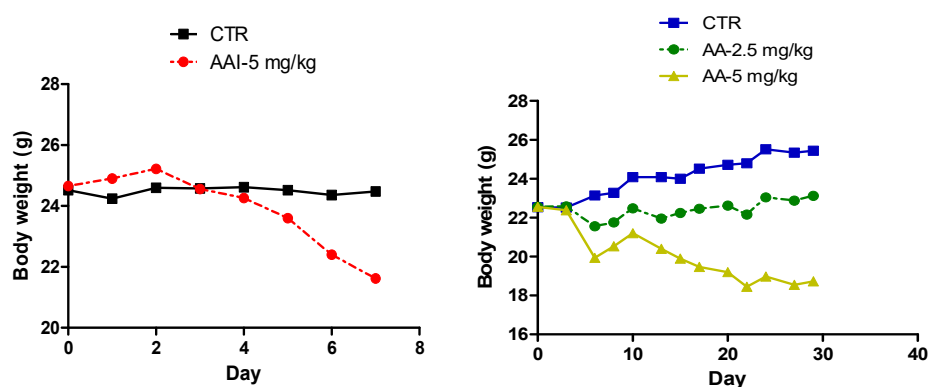
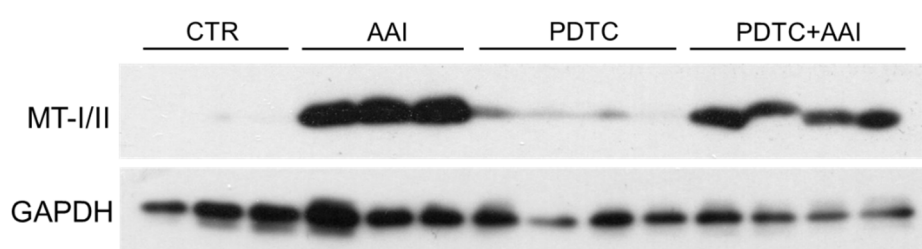


# Supplementary Materials: Reduced Expression of Metallothionein-I/II in Renal Proximal Tubules Is Associated with Advanced Chronic Kidney Disease

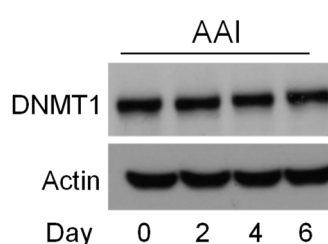
Yi-Jhu Lu, Ya-Ju Wu, Lujen Chen, Bor-Sheng Ko, Tzu-Ching Chang, Yi-Ju Wu, Shu-Man Liang, Yee-Jee Jan and Jun-Yang Liou



**Figure S1.** Body weight of AAN mice. Body weight of mice without (CTR) or with AAI (2.5 and 5 mg/kg) injection were detected at indicated days.  $n \geq 6$  in each group.



**Figure S2.** The representative result of renal MT-I/II protein in AAN/PDTC treated mice determined by Western blot analysis.



**Figure S3.** The representative result of DNMT1 expression AAI-treated HK2 cells determined by Western Blot analysis.