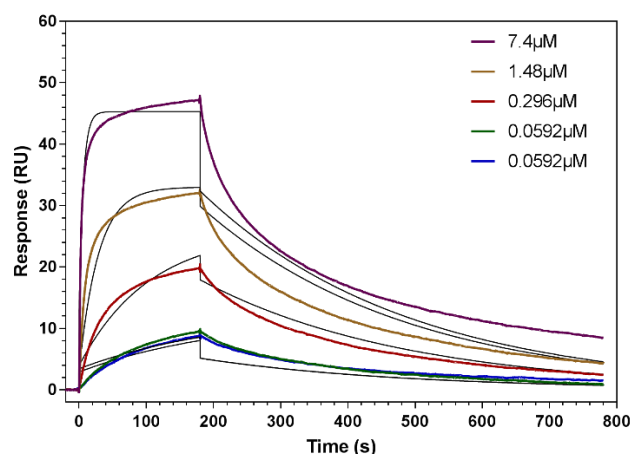


# Supplementary Materials: The Deleterious Effects of Shiga Toxin Type 2 Are Neutralized In Vitro by FabF8:Stx2 Recombinant Monoclonal Antibody

Daniela Luz, Fernando D Gómez, Raíssa L Ferreira, Bruna S Melo, Beatriz EC Guth, Wagner Quintilio, Ana Maria Moro, Agostina Presta, Flavia Sacerdoti, Cristina Ibarra, Gang Chen, Sachdev S Sidhu, María Marta Amaral and Roxane MF Piazza



**Figure S1.** Binding of Fab:F8 to Stx2 measured by Biacore. Stx2 was immobilized on a CM5 sensorchip. The analytes consisted of serial dilutions of Fab F8 between 0 and 7.4  $\mu\text{M}$ . Data was fitted in a Langmuir 1:1 interaction model, using Biacore Evaluation software. Color lines: observed curves; Black lines: fitted curves.