

Supplementary Materials: Modification of Vip3Ab1 C-Terminus Confers Broadened Plant Protection from Lepidopteran Pests

Megan S. Sopko *, Kenneth E. Narva, Andrew J. Bowling, Heather E. Pence, James J. Hasler, Theodore J. Letherer, Cory M. Larsen and Marc D. Zack *

Table S1. PCR primer sequences used to generate Vip3Ab1-740.

Primer Name	
Vip3Ab1 Part A Forward Primer	5' GGA TCC GAA GGA GAT ATA CAT ATG GCA AAC ATG AAC AAC ACC AAA CTG AAC GCG 3'
Vip3Ab1 Part A Reverse Primer	5' TCC AGT ATT TTC ATC TTT CAA GTA GAT TGA CGC CTT 3'
DIG740 Part B Forward Primer	5' AAG GCG TCA ATC TAC TTG AAA GAT GAA AAT ACT GGA 3'
DIG740 Part B Reverse Primer	5' GGA TCC CTA TTT AAT AGA AAT GTT TTC 3'

Table S2. PCR primer sequences for Arabidopsis copy number analysis.

Primer Name	
DSM2 forward Primer	5' CTTACGCTCCCTCTTCGA 3'
DSM2 reverse Primer	5' CTGAGCAATGCCAGCATAGG 3'
TafII forward Primer	5' GAGGATTAGGGTTTCAACGGAG 3'
TafII reverse Primer	5' GAGAATTGAGCTGAGACGAGG 3'



Figure S1. Sequence alignment of Vip3Ab1, DIG740 (Vip3Ai1) and Vip3Ab1-740. The black arrow denotes the location at which the chimera protein was generated. Black background shading is used to highlight amino acid diversity between proteins (BLOSUM62 substitution matrix).

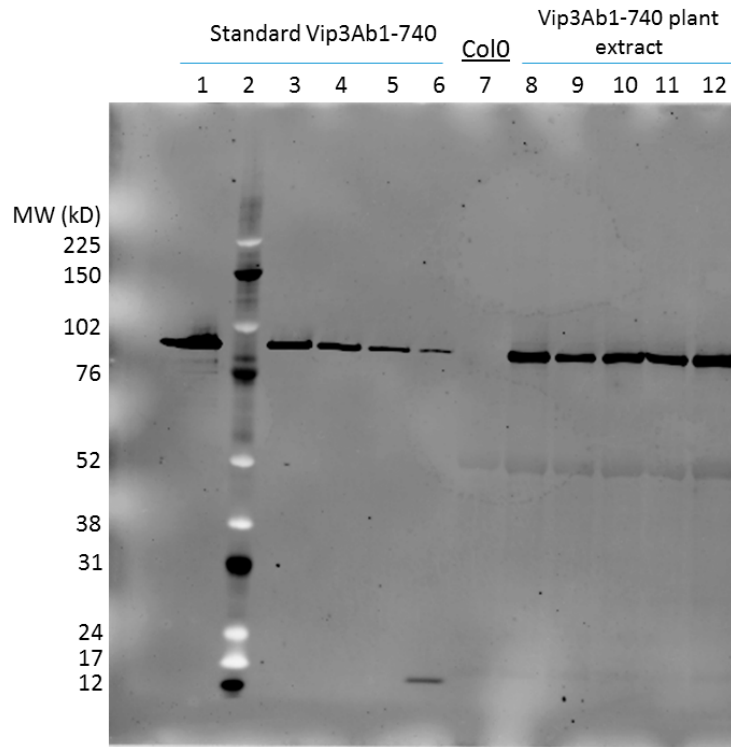


Figure S2. Representative Western Blot of Arabidopsis leaf extracts. “Col0” denotes Columbia-0 plant extract control to show background immunoreactivity of non-transformed Arabidopsis plants.

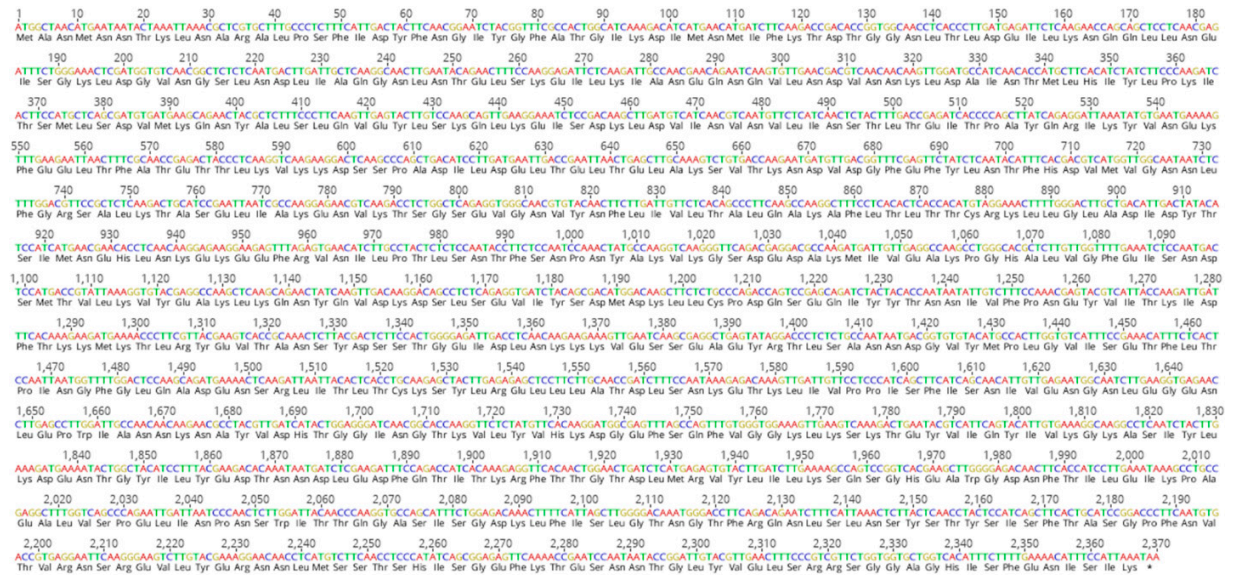


Figure S3. DNA sequence for Vip3Ab1-740 plant expression construct.