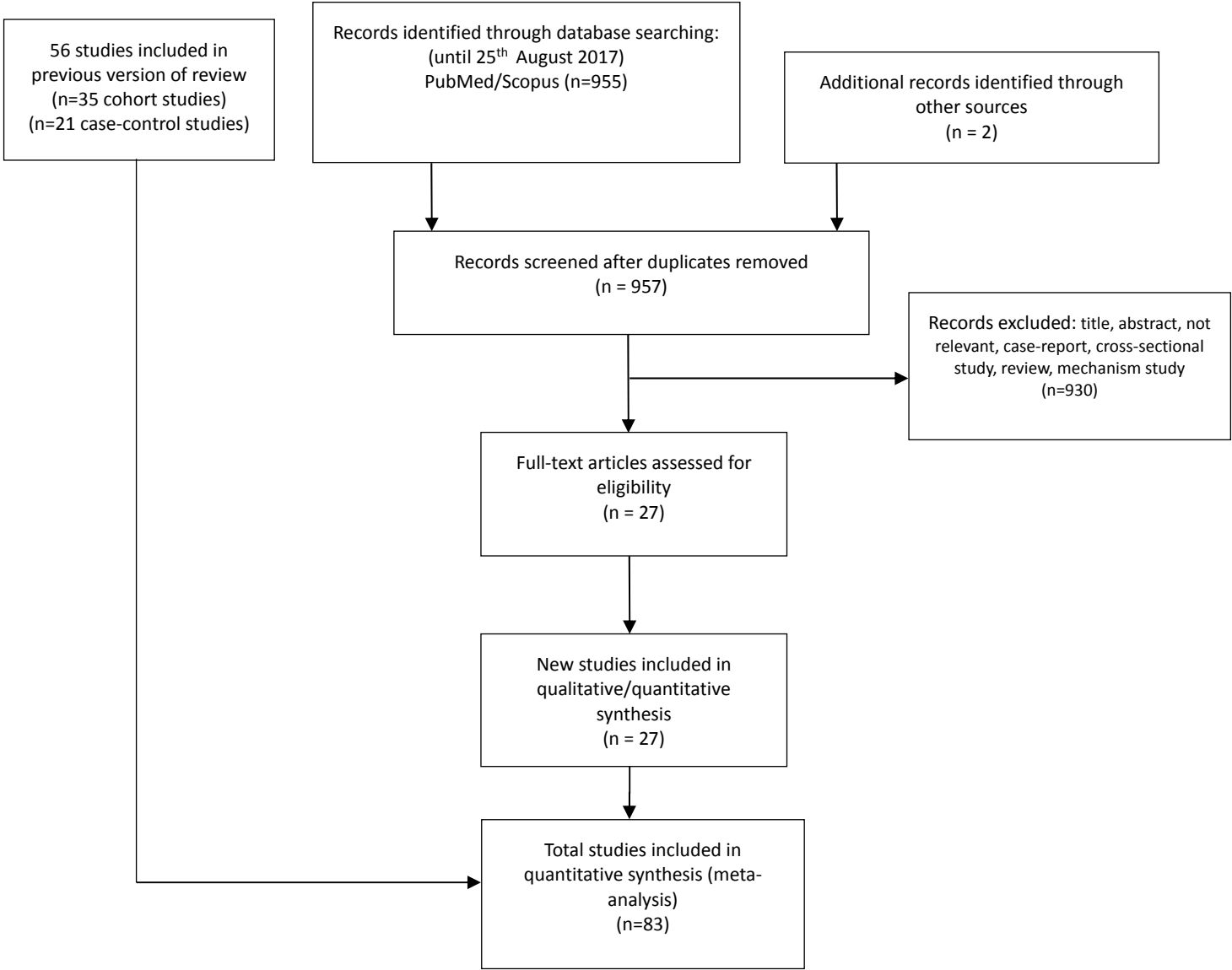
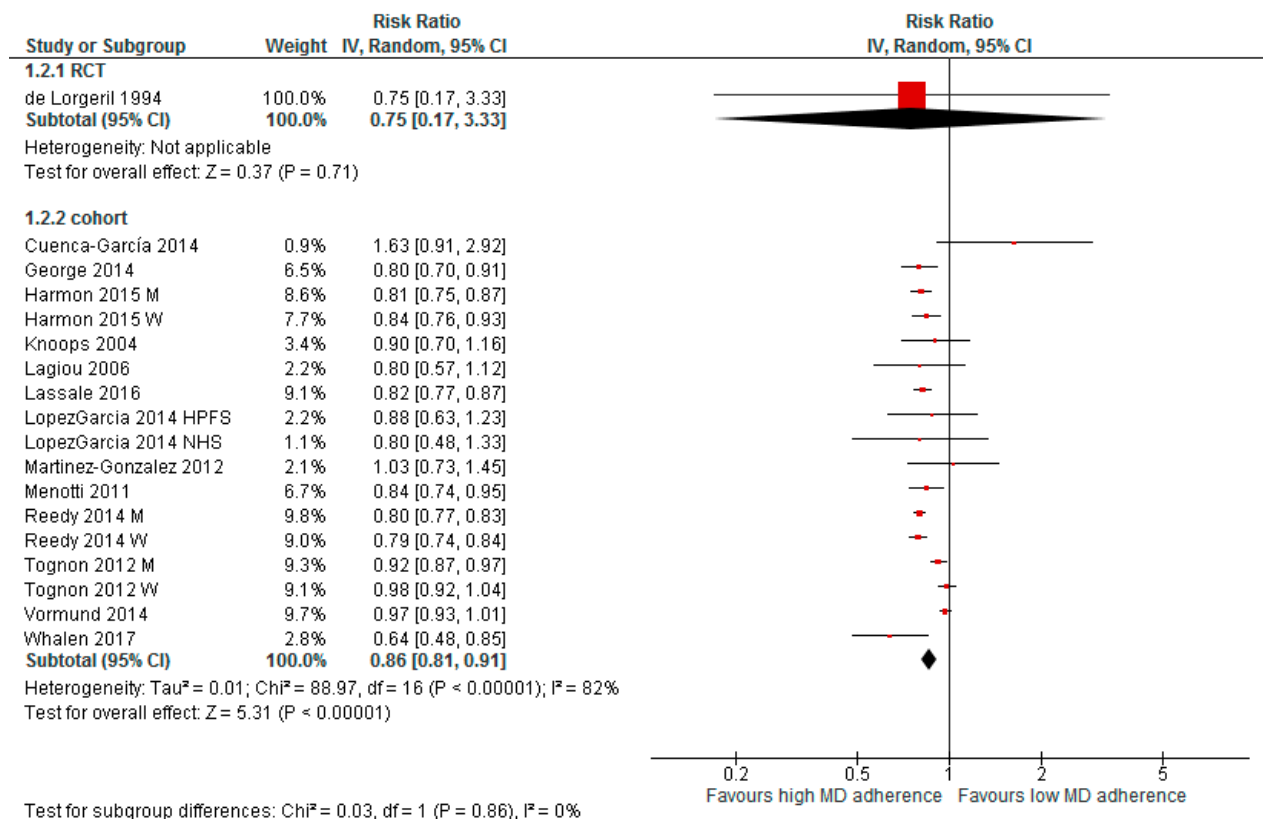
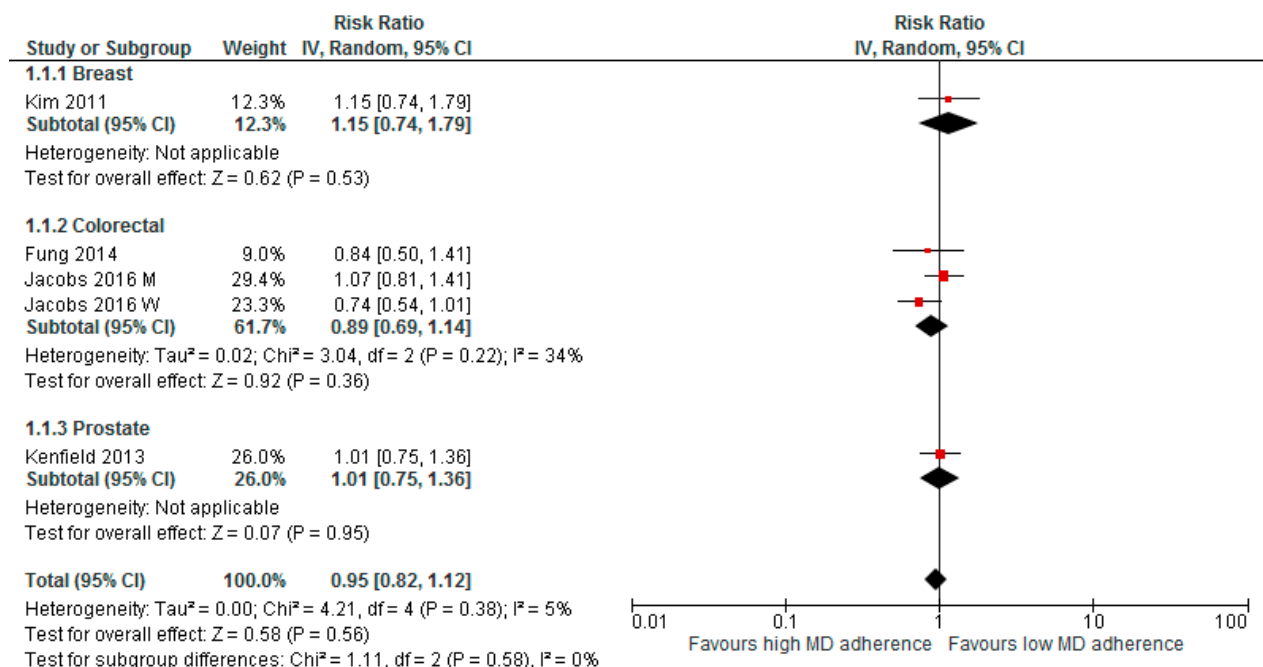


Supplementary Figure S1: Updated Flow chart for meta-analysis article selection process.

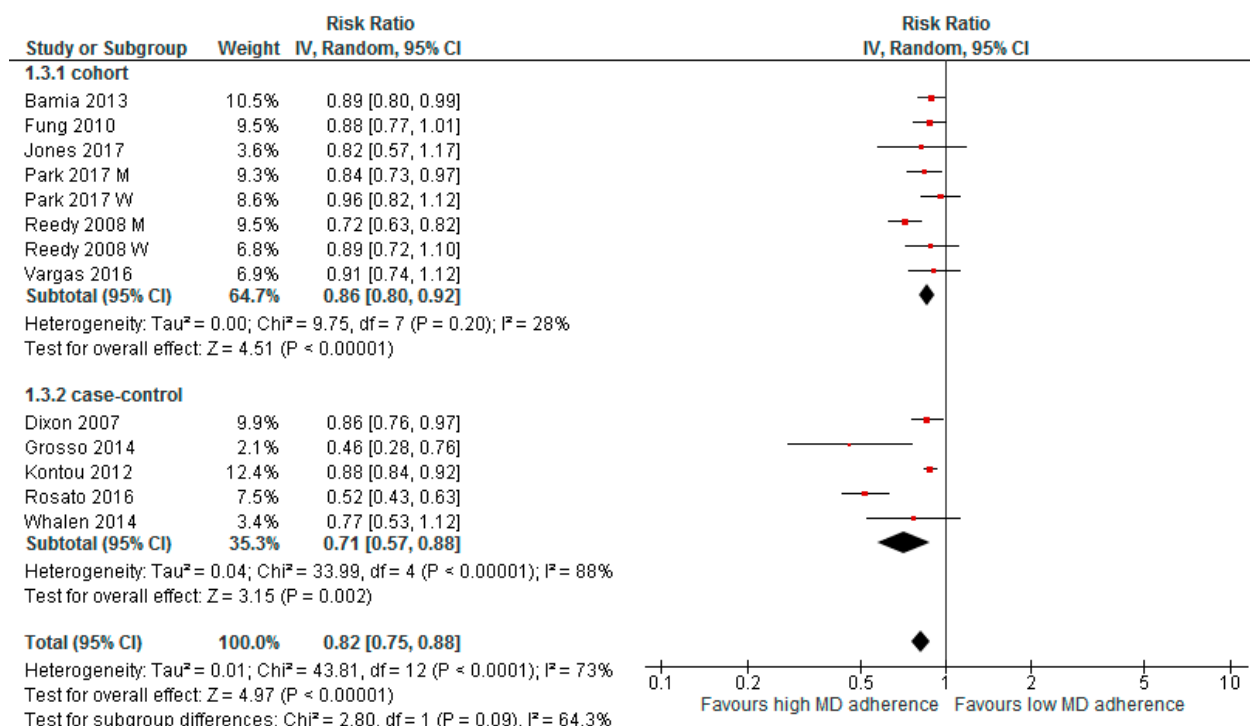




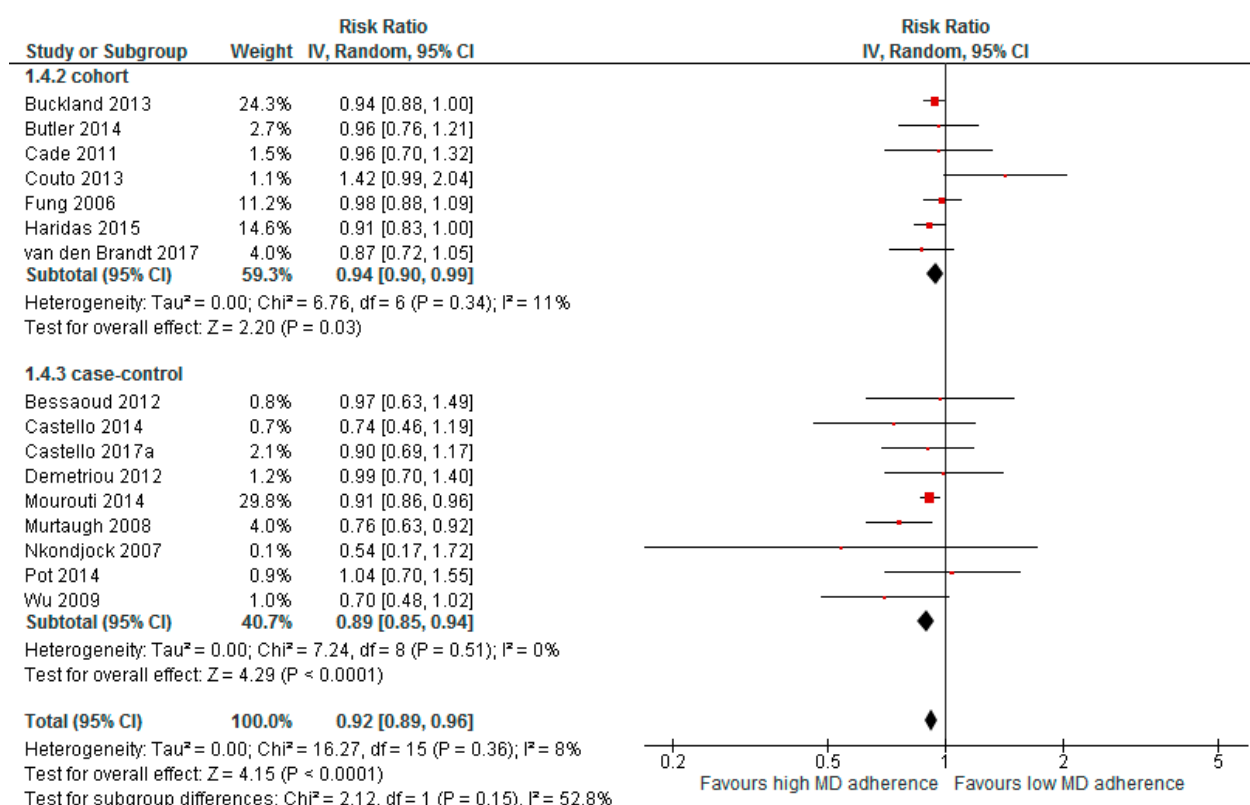
Supplementary Figure S2. Forest plot showing pooled risk ratio (RRs) with 95% CI for risk of cancer mortality for one RCT, and fourteen cohort studies.



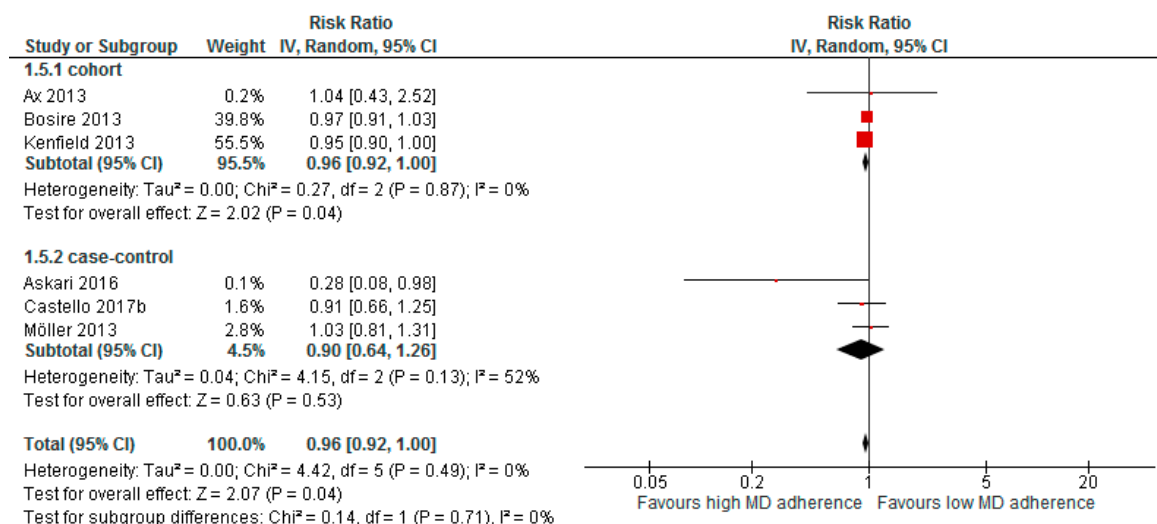
Supplementary Figure S3. Forest plot showing pooled risk ratios (RRs) with 95% CI for risk of cancer mortality among cancer survivors for four cohort studies.



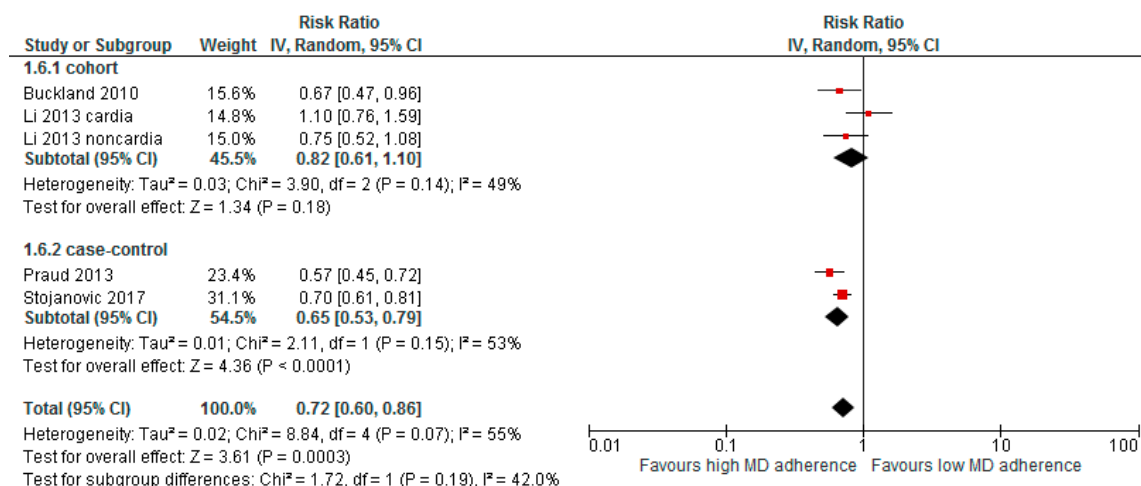
Supplementary Figure S4. Forest plot showing pooled risk ratio (RRs) with 95% CI for risk of colorectal cancer for six cohort studies, and five case-control studies.



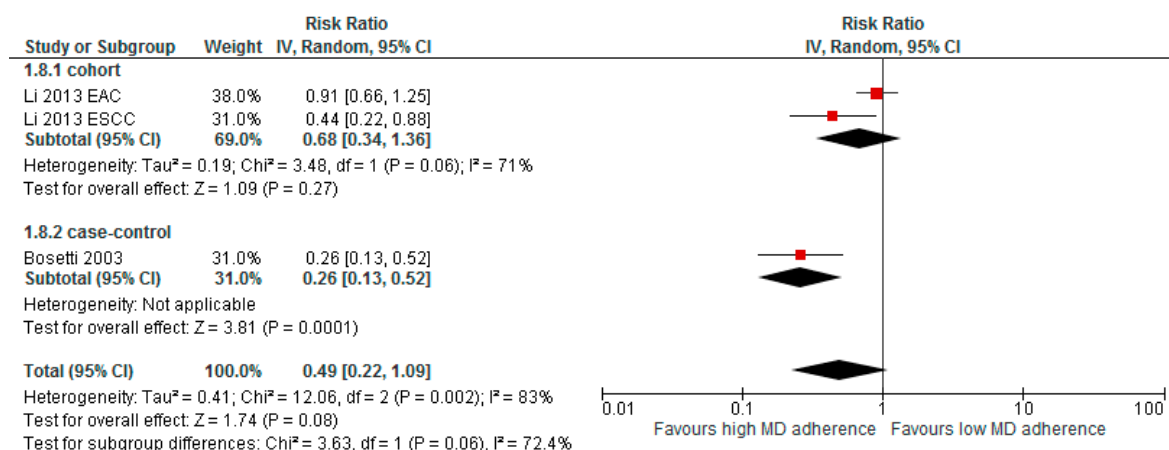
Supplementary Figure S5. Forest plot showing pooled risk ratio (RRs) with 95% CI for risk of breast cancer for seven cohort studies and nine case-control studies.



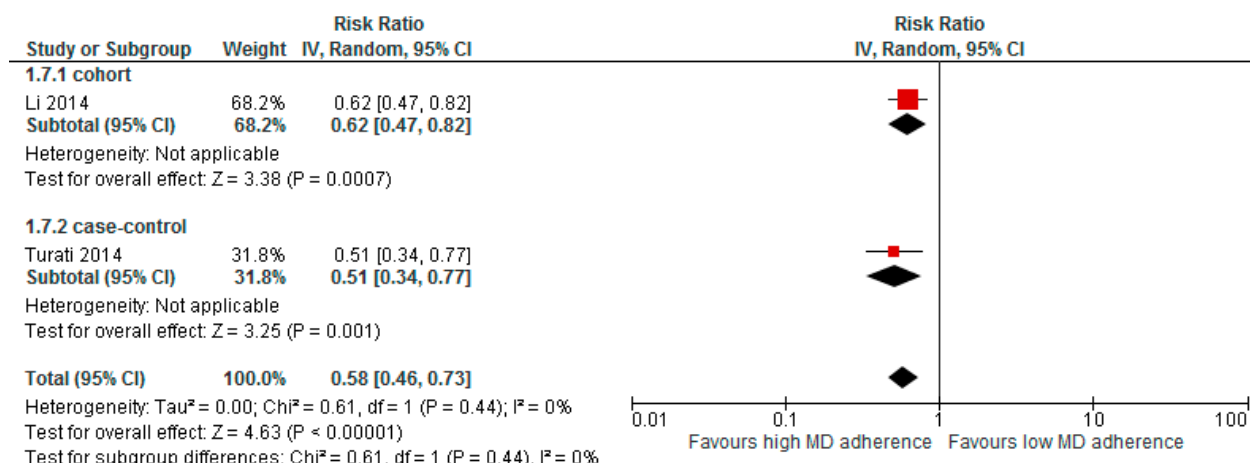
Supplementary Figure S6. Forest plot showing pooled risk ratio (RRs) with 95% CI for risk of prostate cancer for three cohort studies and three case-control studies.



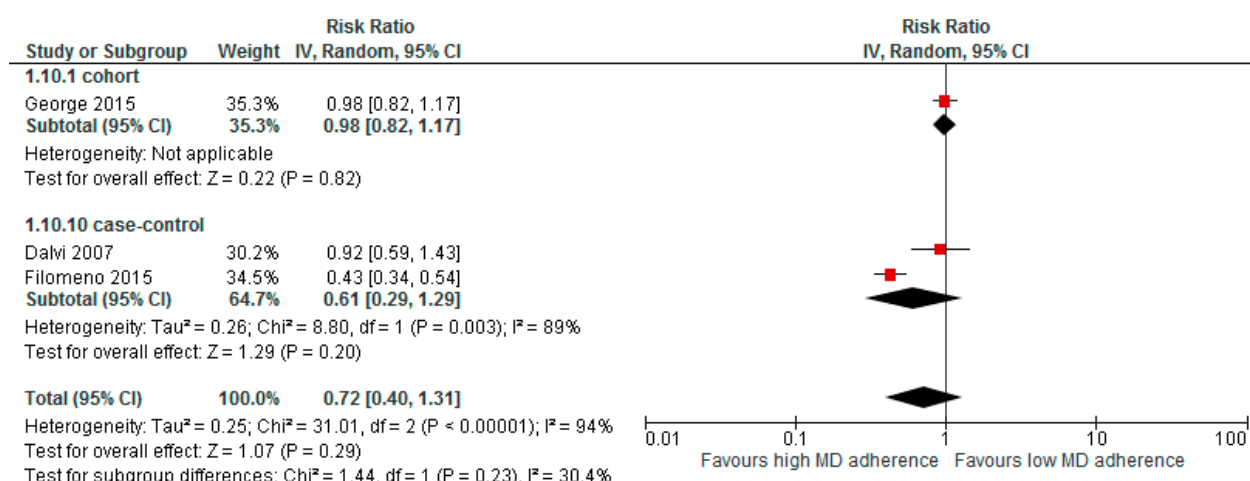
Supplementary Figure S7. Forest plot showing pooled risk ratio (RRs) with 95% CI for risk of gastric cancer for two cohort studies and two case-control study.



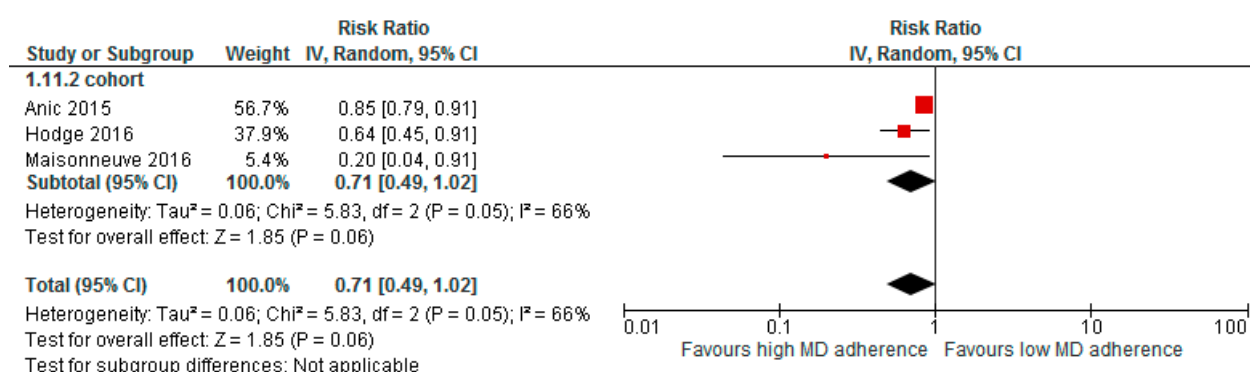
Supplementary Figure S8. Forest plot showing pooled risk ratio (RRs) with 95% CI for risk of esophageal cancer for one cohort study and one case-control study.



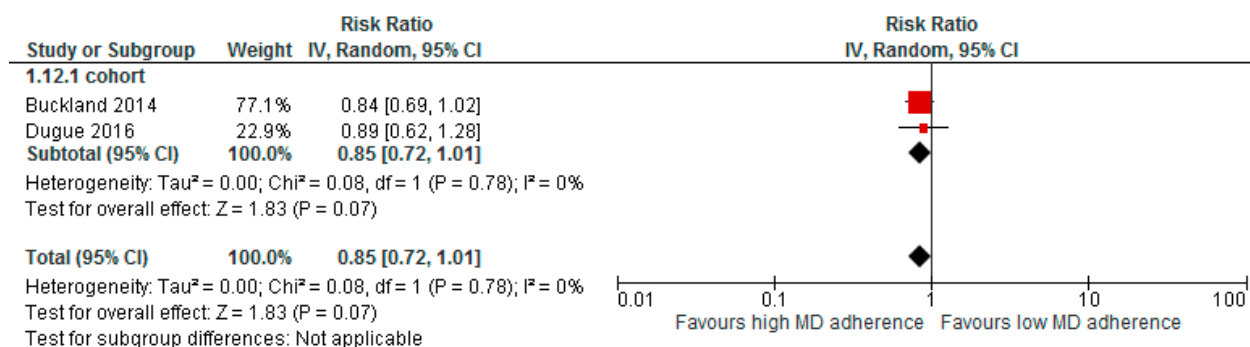
Supplementary Figure S9. Forest plot showing pooled risk ratio (RRs) with 95% CI for risk of liver cancer for one cohort study and one case-control study.



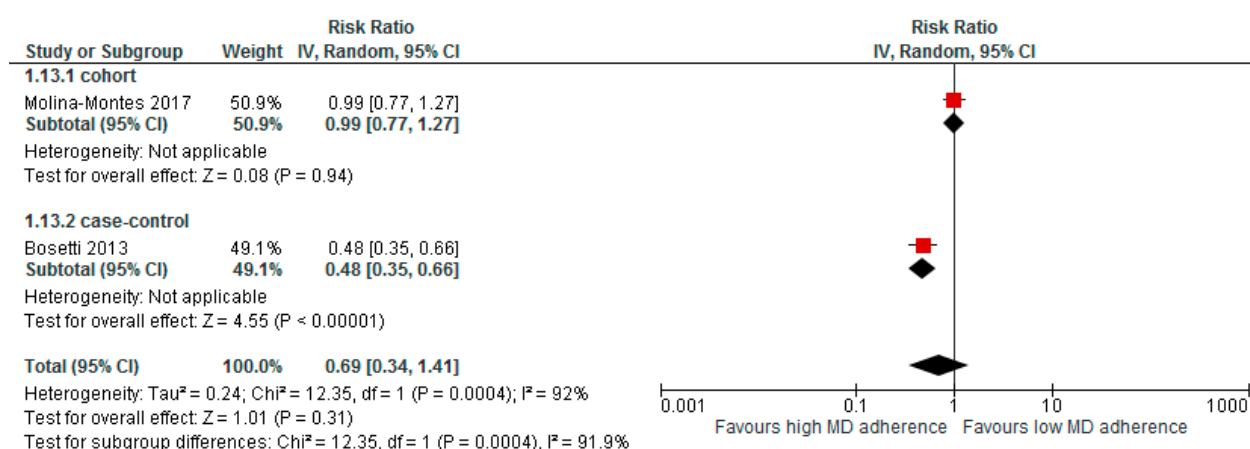
Supplementary Figure S10. Forest plot showing pooled risk ratio (RRs) with 95% CI for risk of endometrial cancer for one cohort study, and two case-control studies.



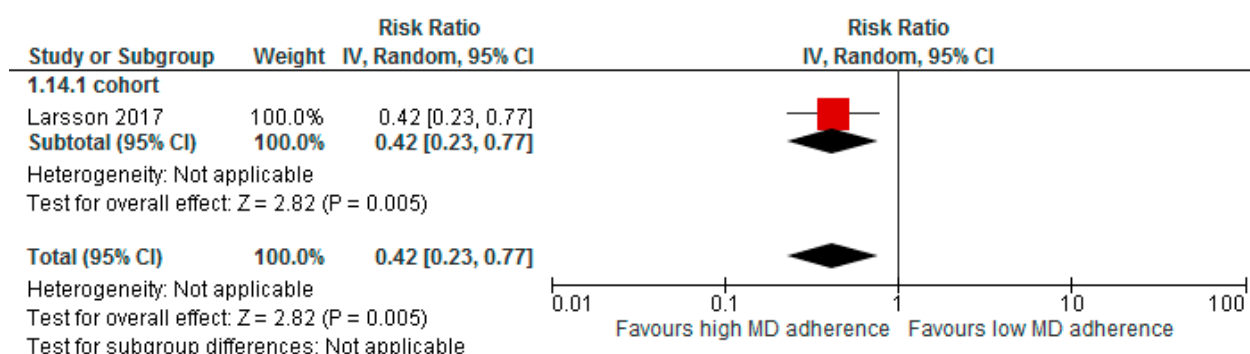
Supplementary Figure S11. Forest plot showing pooled risk ratio (RRs) with 95% CI for risk of respiratory cancer for three cohort studies.



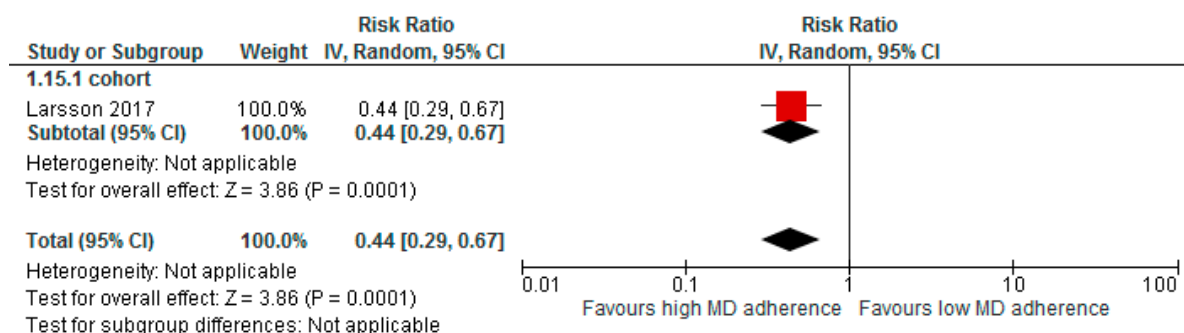
Supplementary Figure S12. Forest plot showing pooled risk ratio (RRs) with 95% CI for risk of bladder cancer for two cohort studies.



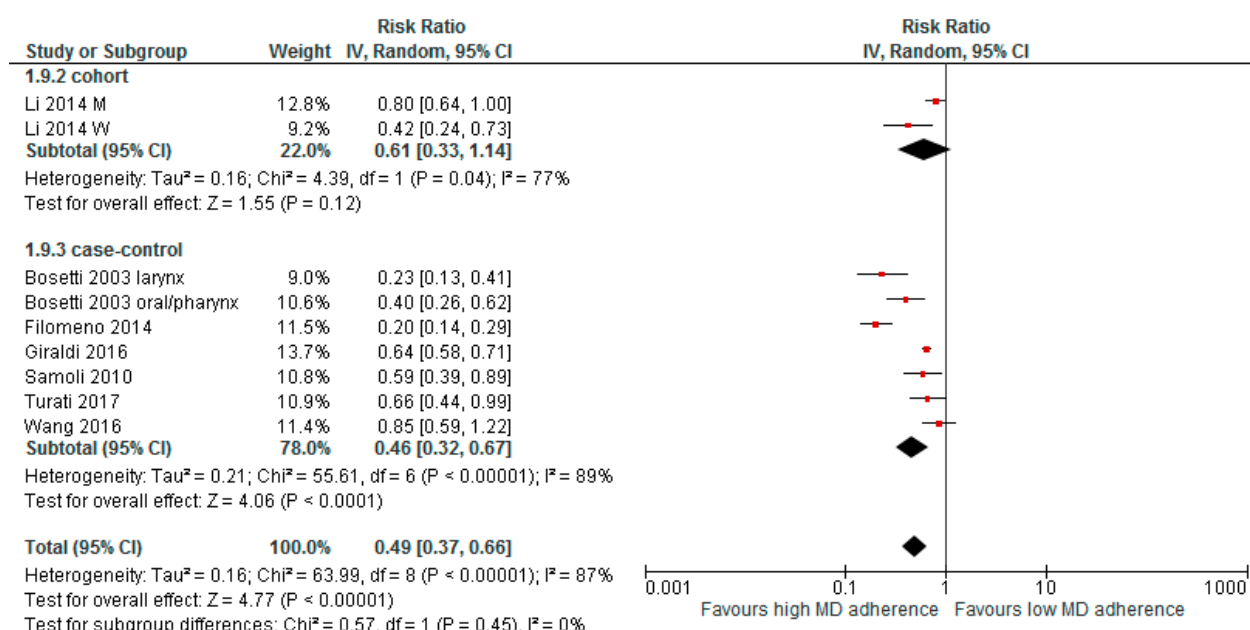
Supplementary Figure S13. Forest plot showing pooled risk ratio (RRs) with 95% CI for risk of pancreatic cancer for one cohort study and one case-control study.



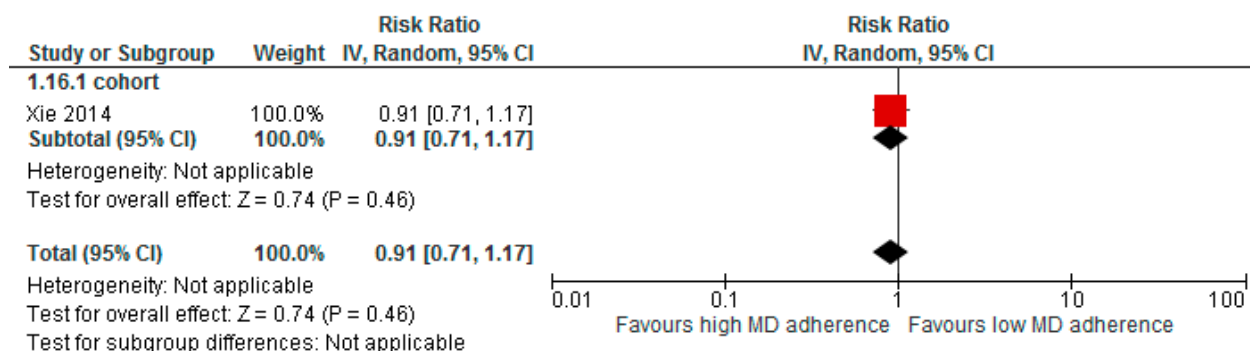
Supplementary Figure S14. Forest plot showing pooled risk ratio (RRs) with 95% CI for risk of gallbladder cancer for one cohort study.



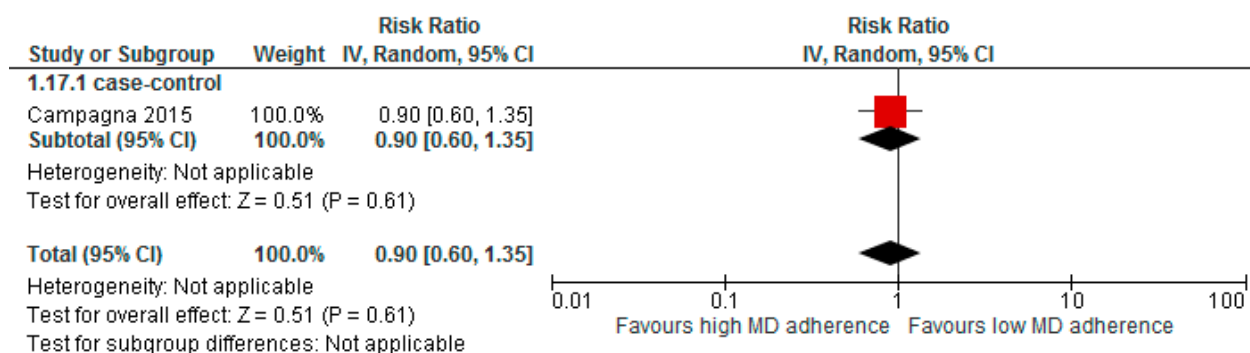
Supplementary Figure S15. Forest plot showing pooled risk ratio (RRs) with 95% CI for risk of biliary tract cancer for one cohort study.



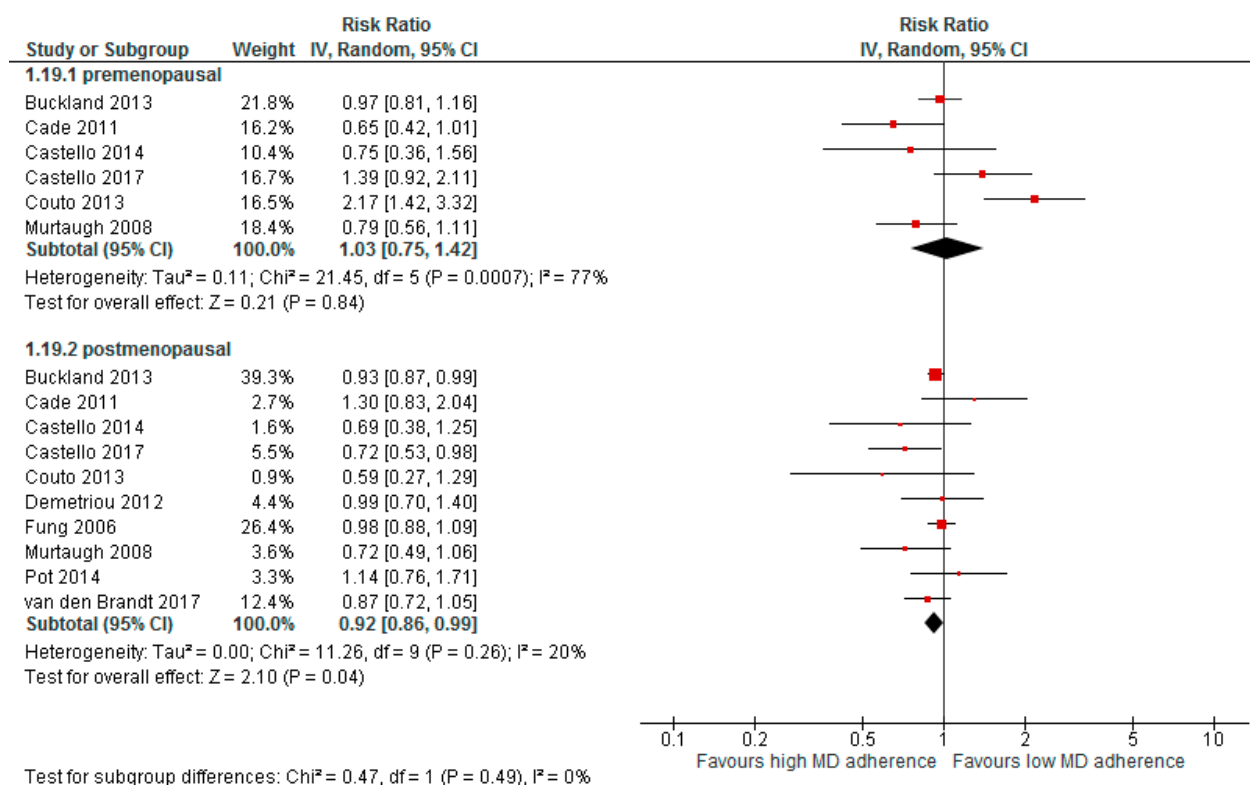
Supplementary Figure S16. Forest plot showing pooled risk ratio (RRs) with 95% CI for risk of head and neck cancer for one cohort study and six case-control studies.



Supplementary Figure S17. Forest plot showing pooled risk ratio (RRs) with 95% CI for risk of ovarian cancer for one cohort study.

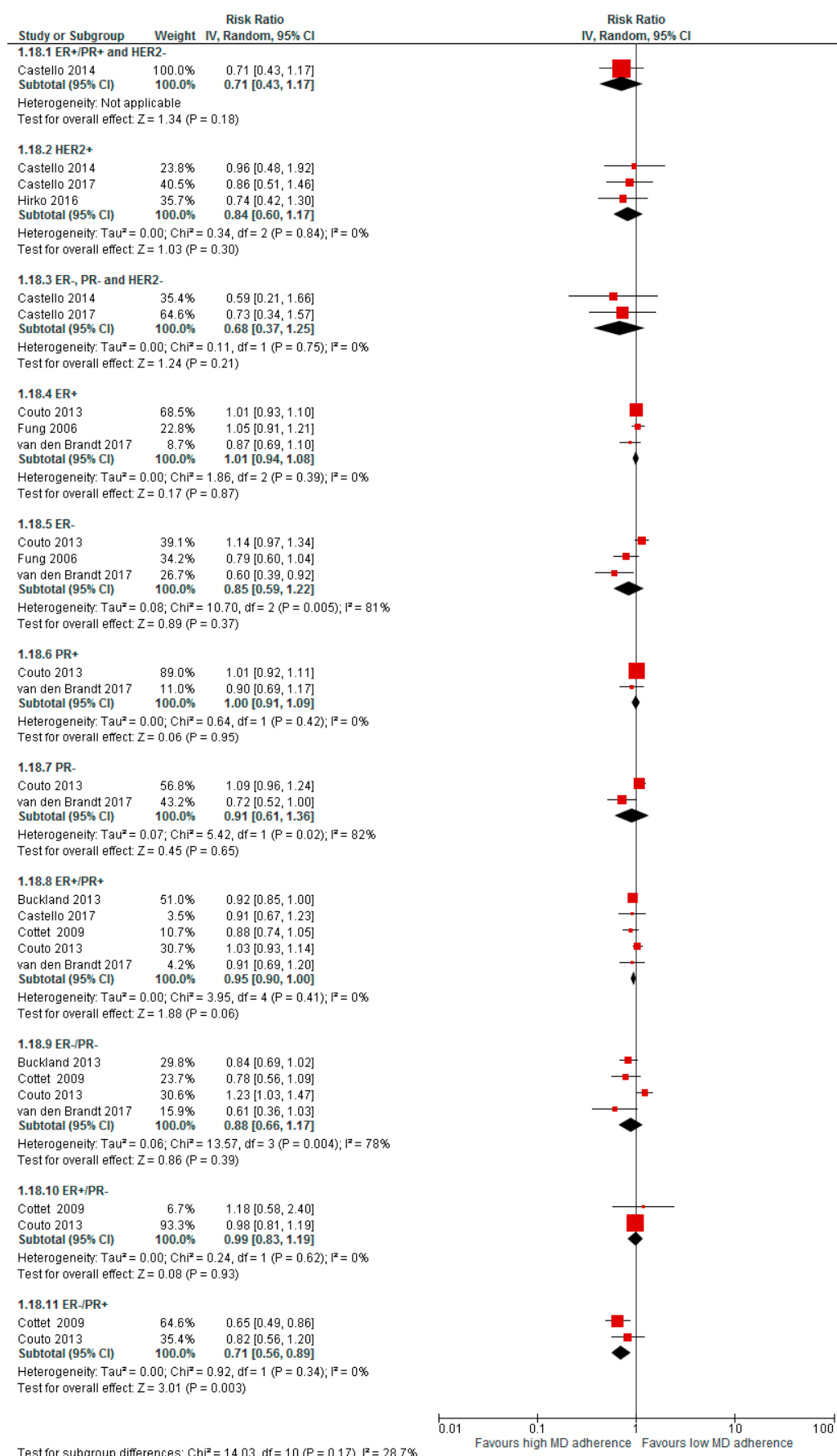


Supplementary Figure S18. Forest plot showing pooled risk ratio (RRs) with 95% CI for risk of lymphoma for one case-control study.

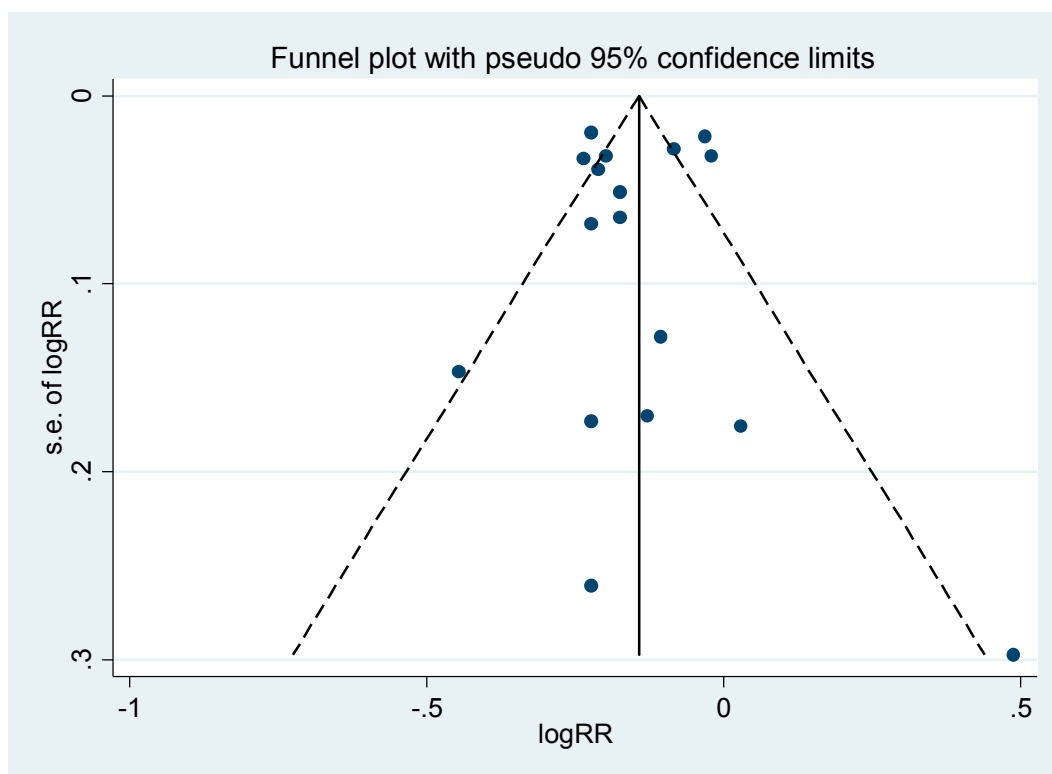


Supplementary Figure S19. Forest plot showing pooled risk ratio (RRs) with 95% CI for risk of breast cancer for pre vs. postmenopausal women.

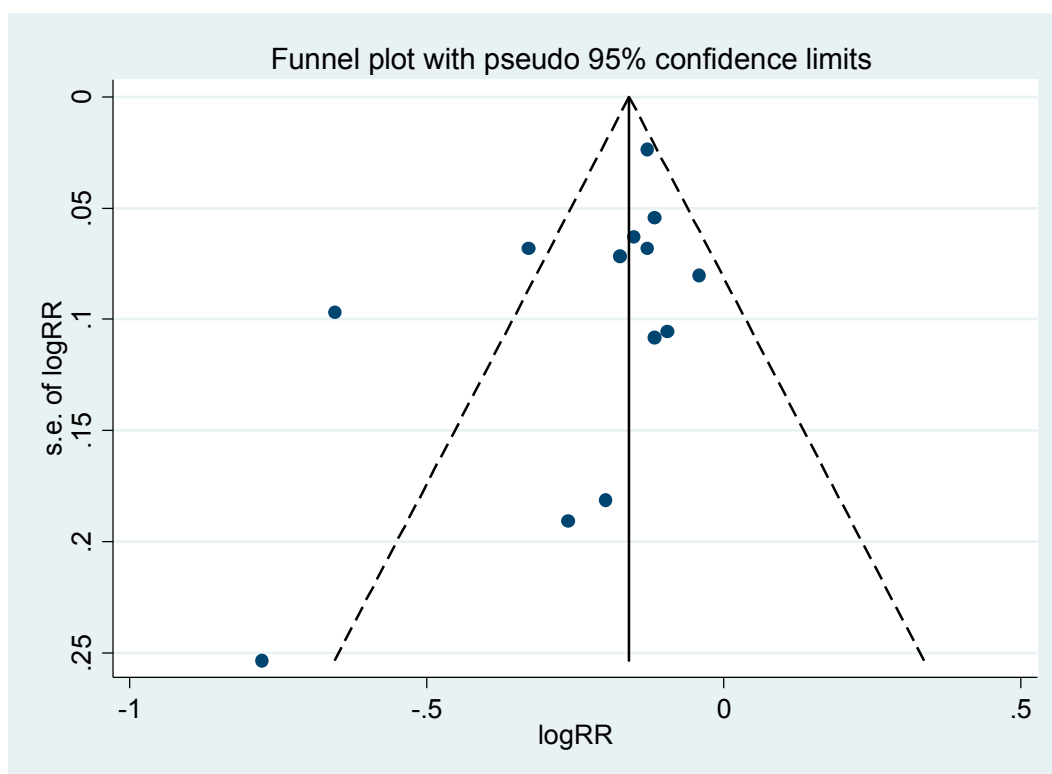




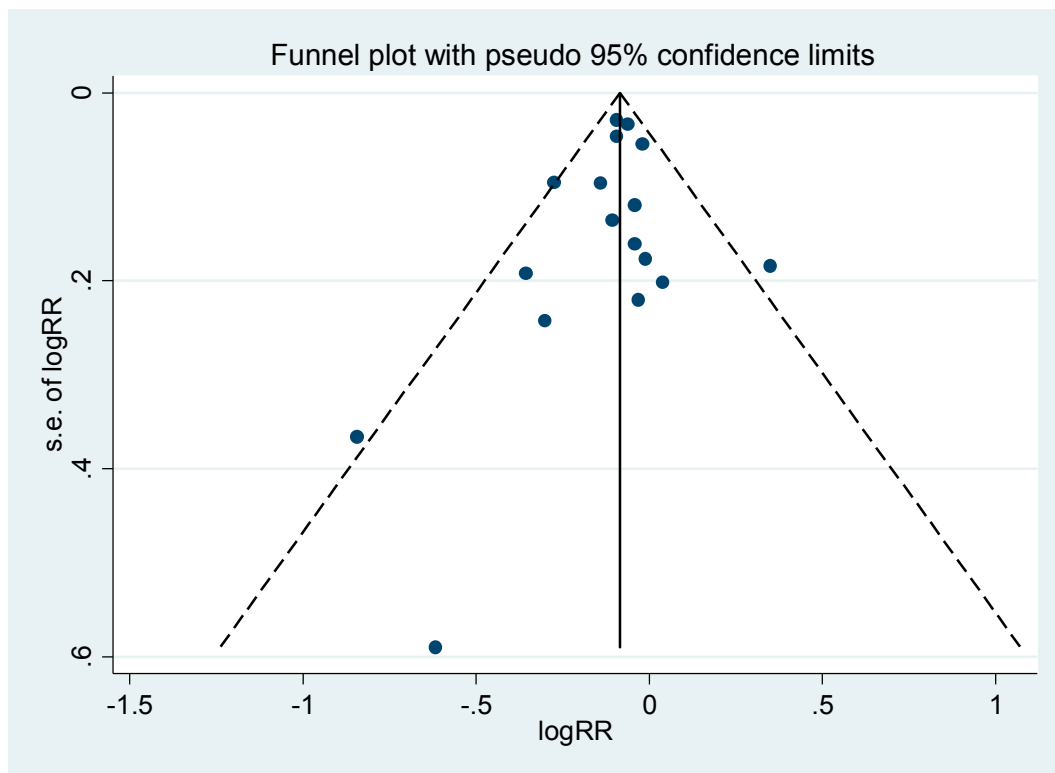
Supplementary Figure S20. Forest plot showing pooled risk ratio (RRs) with 95% CI for risk of breast cancer for breast cancer types.



Supplementary Figure S21: Funnel plot showing study precision against the relative risk effect estimate with 95% CIs for cancer mortality. SE = Standard error



Supplementary Figure S22: Funnel plot showing study precision against the relative risk effect estimate with 95% CIs for colorectal cancer. SE = Standard error



Supplementary Figure S23: Funnel plot showing study precision against the relative risk effect estimate with 95% CIs for breast cancer. SE = Standard error