

Figure S1. Q-Q plot of the distribution of Korean Healthy Eating Index.

Distribution of Korean Healthy Eating Index

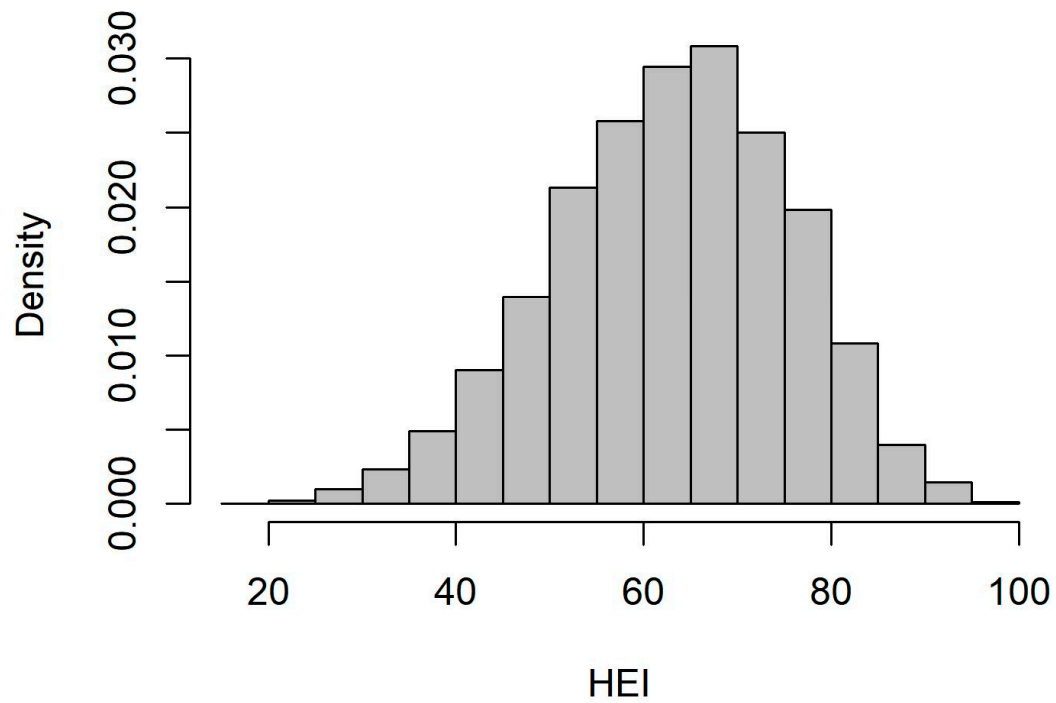


Figure S2. Histogram of the distribution of Korean Healthy Eating Index.

Table S1. Associations between temporary employment and the Korean Healthy Eating Index according to the spouse's employment status.

	Men		Women	
	Working spouse	Non-working spouse or no spouse	Working spouse	Non-working spouse or no spouse
	β (95% CI)	β (95% CI)	β (95% CI)	β (95% CI)
Employment type				
Regular	0.00 (0.00, 0.00)	0.00 (0.00, 0.00)	0.00 (0.00, 0.00)	0.00 (0.00, 0.00)
Fixed-term	-0.38 (-3.20, 2.45)	-5.16 (-8.38, -1.95)	-0.72 (-2.06, 0.62)	-2.20 (-4.58, 0.19)
Daily	-3.26 (-6.28, -0.24)	-3.40 (-6.43, -0.37)	0.04 (-2.10, 2.19)	-5.80 (-9.73, -1.86)

β , beta coefficient; CI, confidence interval

The adjusted model controlled for age, education, income, occupation type, working hours, and survey years.