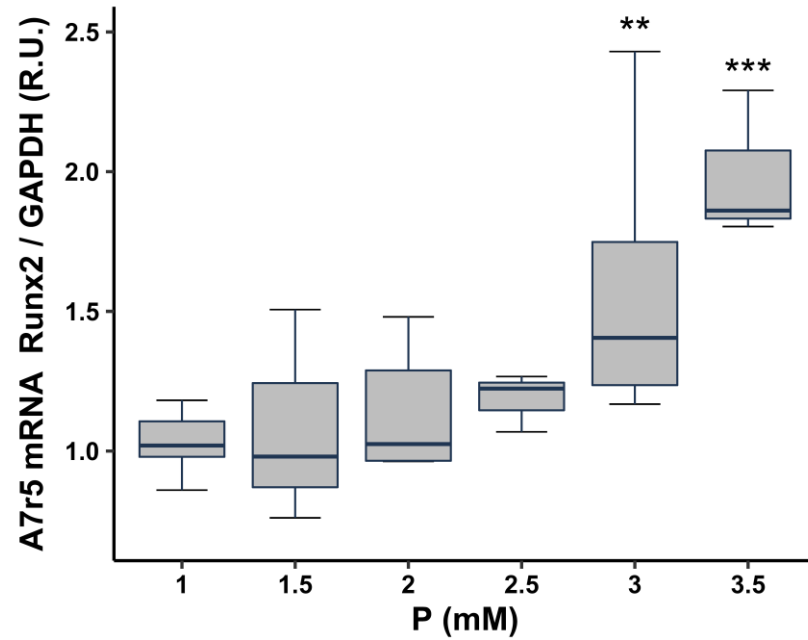
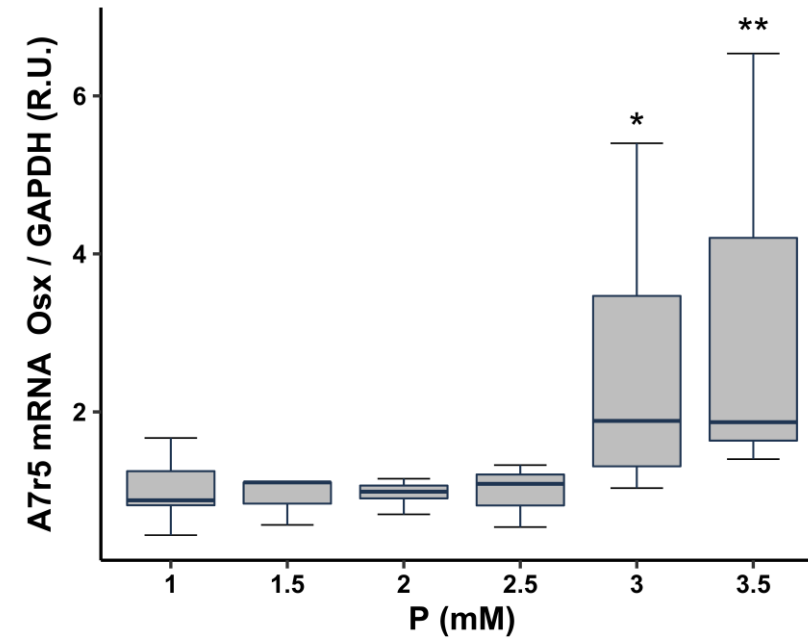


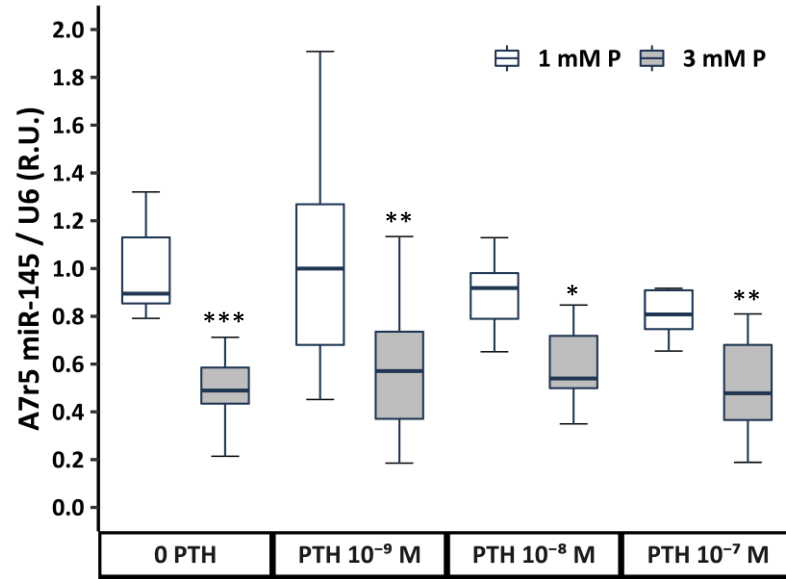
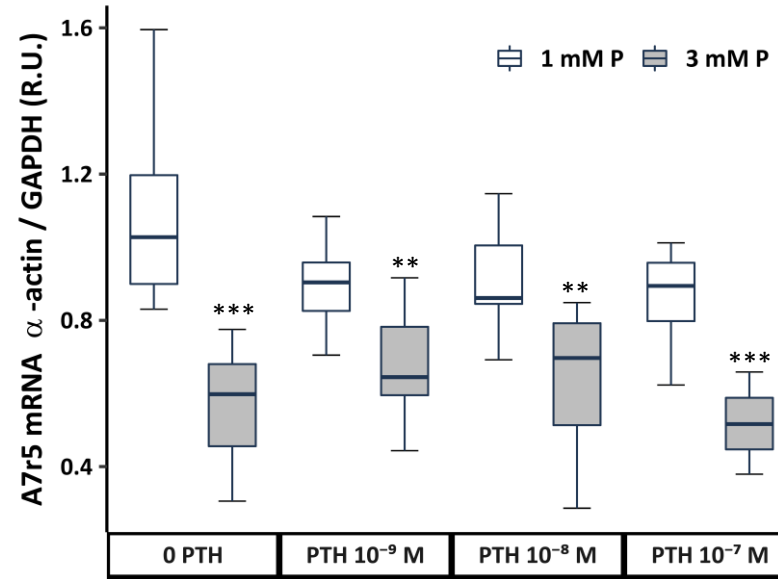
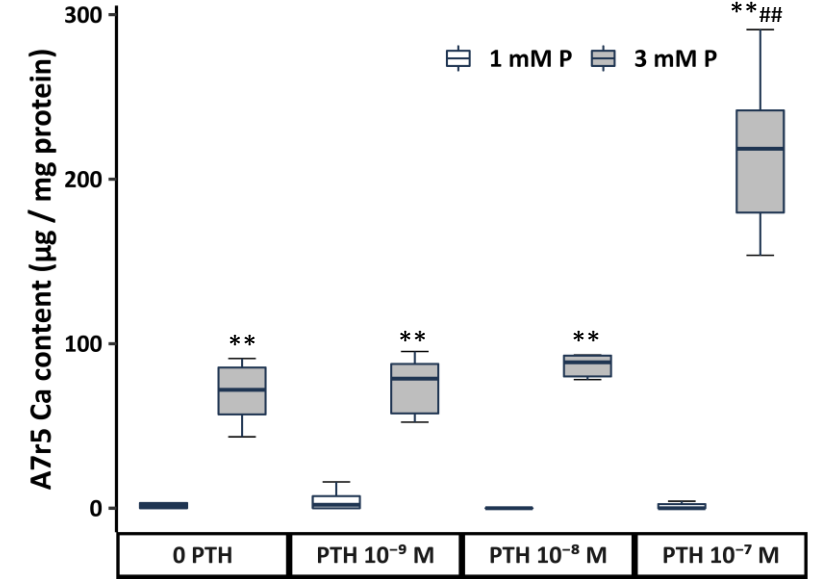
(A)



(B)



**Supplementary Figure S1. Effect of different P concentrations (1-3.5 mM) on Runx2 (A) and Osterix (B) gene expression on A7r5 cells after 72 h of exposure. R.U. Relative units. Data represent median [interquartile range]. \* $p < 0.05$ , \*\* $p < 0.01$ , \*\*\* $p < 0.001$  versus 1 mM P.**

**(A)****(B)****(C)**

**Supplementary Figure S2. Effect of high P and different PTH concentrations (10<sup>-9</sup>-10<sup>-7</sup> M) on A7r5 cells after 72 h of exposure in non-calcifying (1 mM P) and calcifying (3 mM P) medium.** miR-145 levels (A),  $\alpha$ -actin gene expression (B) and Ca content (C). R.U. Relative units. Data represent median [interquartile range]. White and grey boxes represent non-calcifying and calcifying medium respectively. \*p<0.05, \*\*p<0.01, \*\*\*p<0.001 versus its own control (1 mM P). ##p<0.01 versus 1 mM P without PTH.