

Supplementary Material

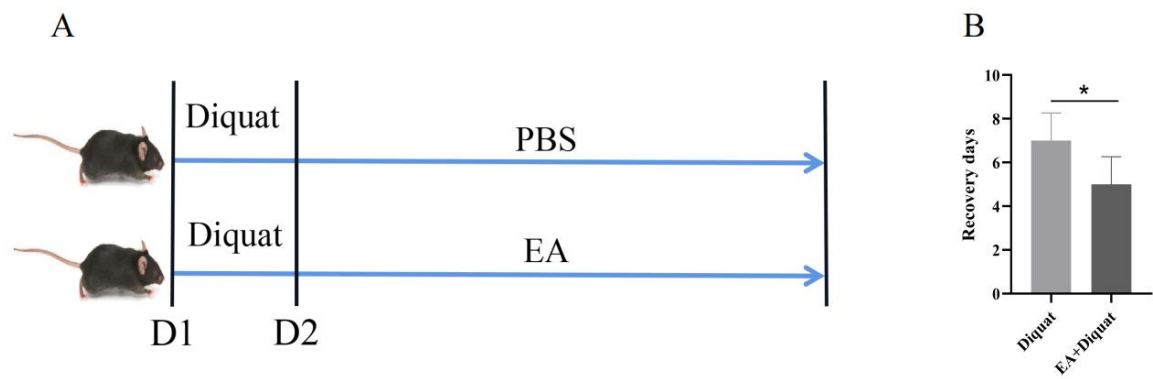


Figure S1: Therapeutic ellagic acid treatment shortened the time for the mice to return to their initial weight when challenged with diquat. **(A)** The treatment experimental scheme of mice. **(B)** The time for the mice to return to their initial weight when challenged with diquat. * means $p < 0.05$ between two groups. All data were presented as mean \pm S.E.M (n = 6).