

Supplementary Materials

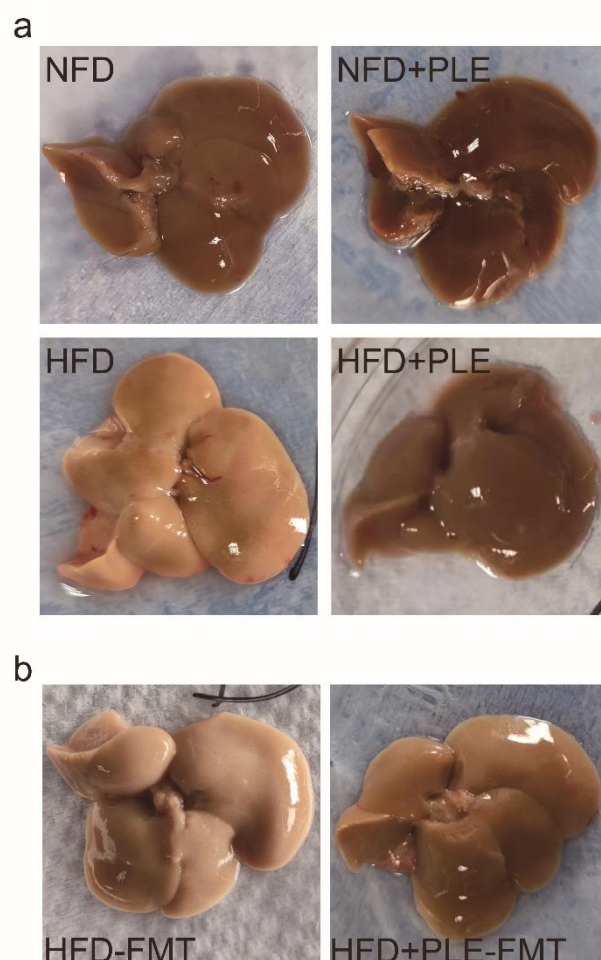


Figure S1. Visual observation of the liver of mice in each group.

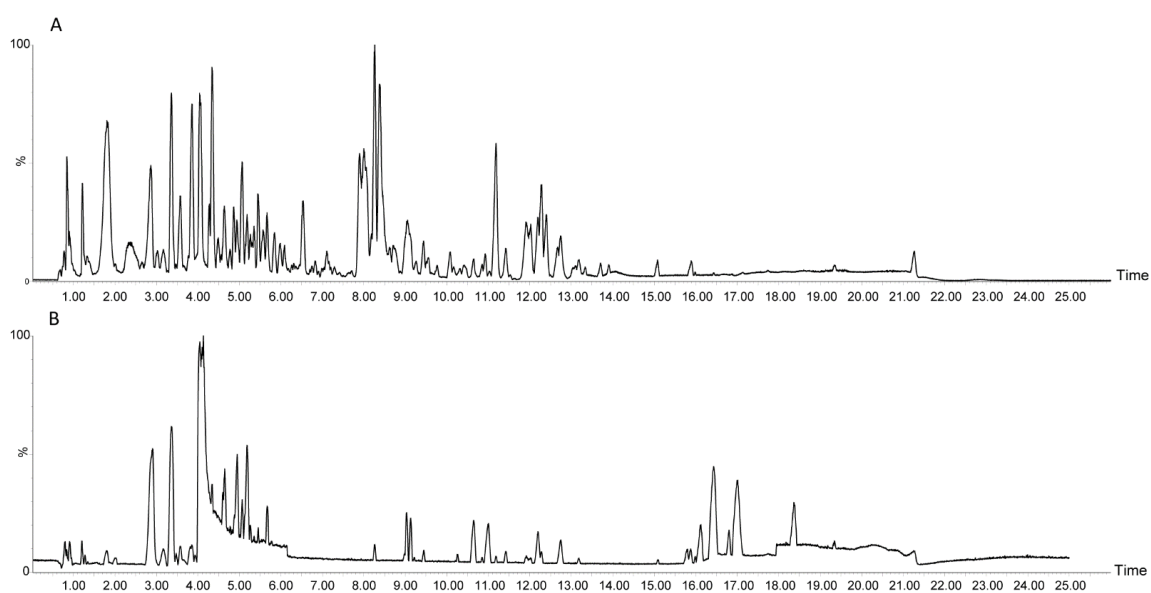


Figure S2. Ultra-high-performance liquid chromatography with quadrupole time-of-flight mass spectrometry (UPLC-QTOF/MS) chromatograms of polyphenol-rich Liupao Tea extract (PLE). A: Negative ion mode; B: Positive ion mode.

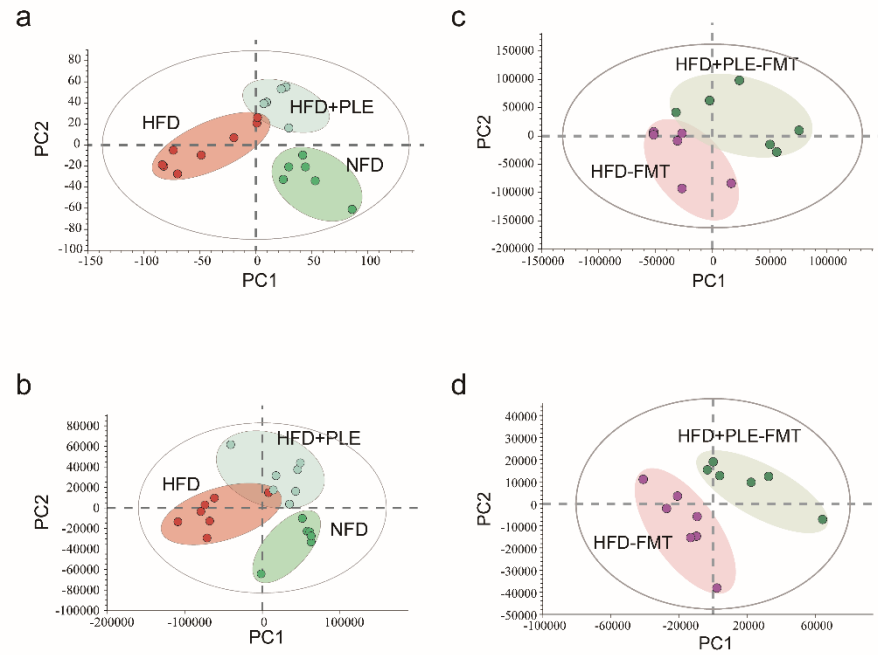


Figure S3. PLS-DA score plots based on the UHPLC/Q-TOF MS spectra in each group.

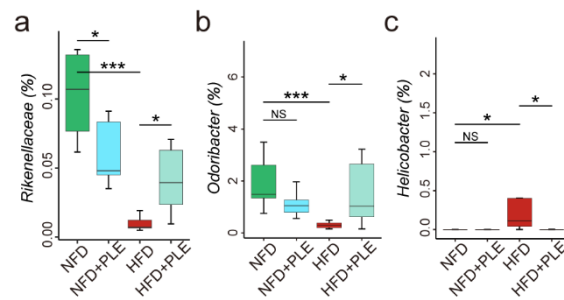


Figure S4. Abundance of the *Rikenellaceae*, *Odoribacter*, and *Helicobacter* genera in the intestinal tract of mice in each group.