

Figure S1. Effect of low protein diet on food intake, protein intake, and body weight in mothers. Female mice were fed with low-protein diet for 11 weeks or normal protein diet. The food intake and body weight were recorded weekly. (A) Food intake. (B) Calculated protein intake. (C) Body weight. ($N = 12$ for each group). Data were expressed as Mean \pm SE. $**P < 0.01$.

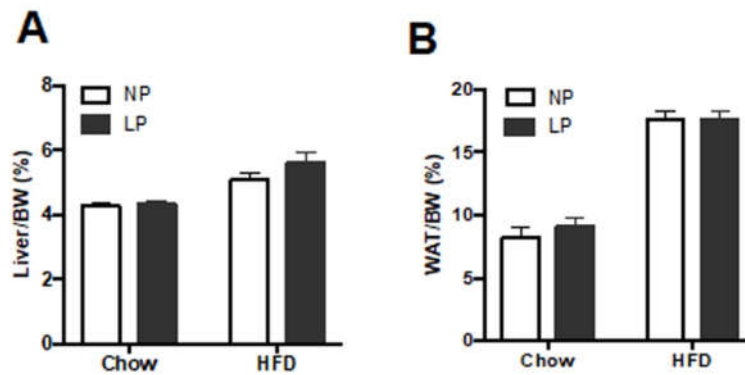


Figure S2. Effect of maternal low-protein diet on liver and white adipose tissue weight in the offspring. (A) Liver weight index. (B) White adipose tissue weight index. $N = 7-9$ for each group. Data were expressed as Mean \pm SE.