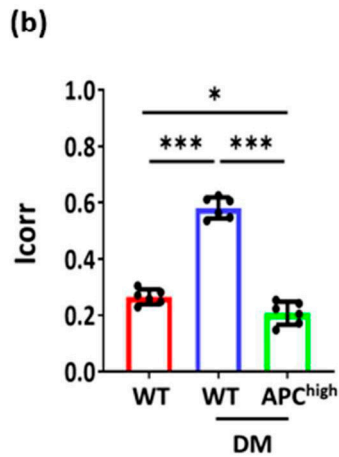
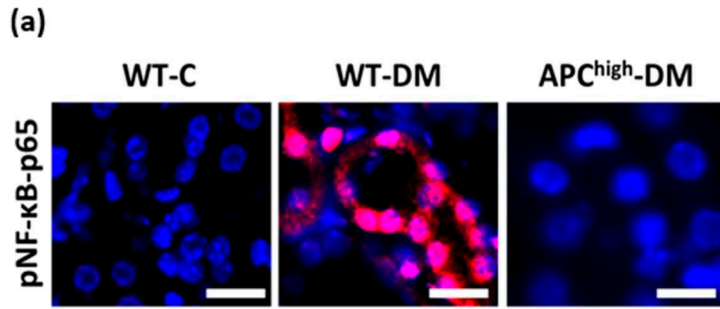


Supplementary Figure S1. (a) Albuminuria (UACR, urine albumin creatinine ratio) control nondiabetic (WT) and diabetic wild-type (WT-DM) or APC^{high}-DM mice after 24 weeks of hyperglycaemia; each dot represents data from one mouse. (b-d) Exemplary images of PAS-stained kidney sections (top row) and of the glomerular filtration barrier (middle and bottom row; transmission electron microscopy) and bar graphs with dot plots summarizing fractional mesangial area (e) and GBM thickness (glomerular basement membrane thickness, nm, d); groups as in a. Means \pm SEMs of at least three mice per group. *P < 0.05; **P < 0.01; ***P < 0.001 (a, c-d). Statistical analyses were performed using one-way ANOVA with Sidak's multiple comparison test.



Supplementary Figure S2. Representative images (a) of immunohistochemical staining of p65-NF-κB (red; DAPI nuclear counter stain, red) and bar graph with dot plot showing Icorr-scores for p65-NF-κB and DAPI colocalization in mouse kidneys obtained from nondiabetic wild-type (WT-C), diabetic wild-type (WT-DM), or diabetic APC^{high} mice (APC^{high}-DM); scale bar: 20 μm; *P<0.05; **P<0.01; ***P<0.001 (b). Statistical analyses were performed using one-way ANOVA with Sidak's multiple comparison test.