

Figure S1. Gating strategy for analysis of CD4⁺ and CD8⁺ T cells. Single cells were gated using FSC-A and FSC-H (A). Cells were gated based on size and granularity using FSC-A and SSC-A to determine lymphocyte region (B). CD3⁺ (PE) T cells were selected for further analysis (C). Subsequently, CD4⁺ (PerCP) and CD8⁺ (APC) T cells were analyzed.

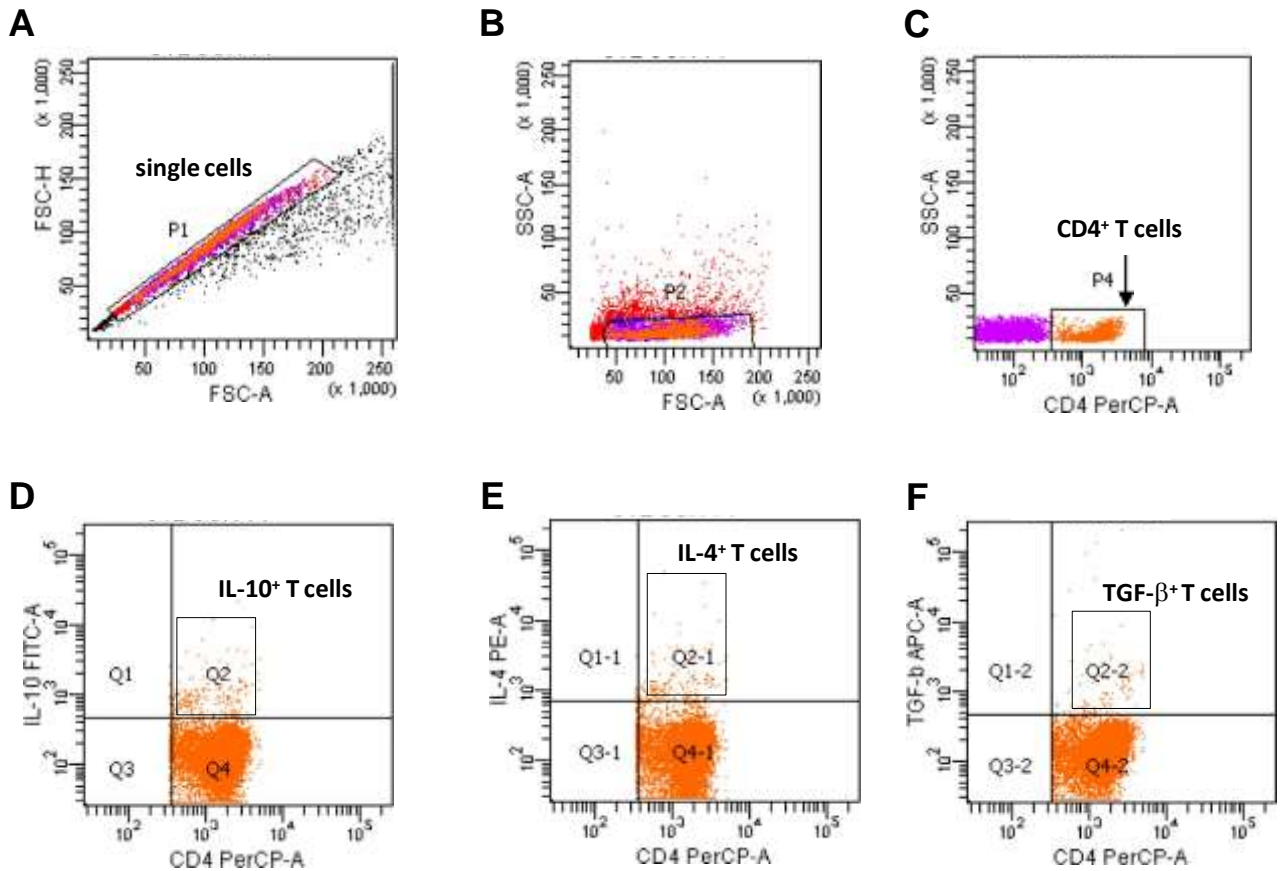


Figure S2. Gating strategy for intracellular cytokines of CD4⁺ T cells in lamina propria of the proximal small intestine. Single cells were gated using FSC-A and FSC-H (A). Cell were gated based on size and granularity using FSC-A and SSC-A to determinate lymphocyte region (B). CD4⁺ (PerCP) T cells were selected for further analysis (C). Subsequently, CD4⁺ (PerCP) T cells was followed by examination of expression of IL-10 (FITC) (D), IL-4 (PE) (E) and TGF- β (APC) (F)