

Supplementary material

Figure S1

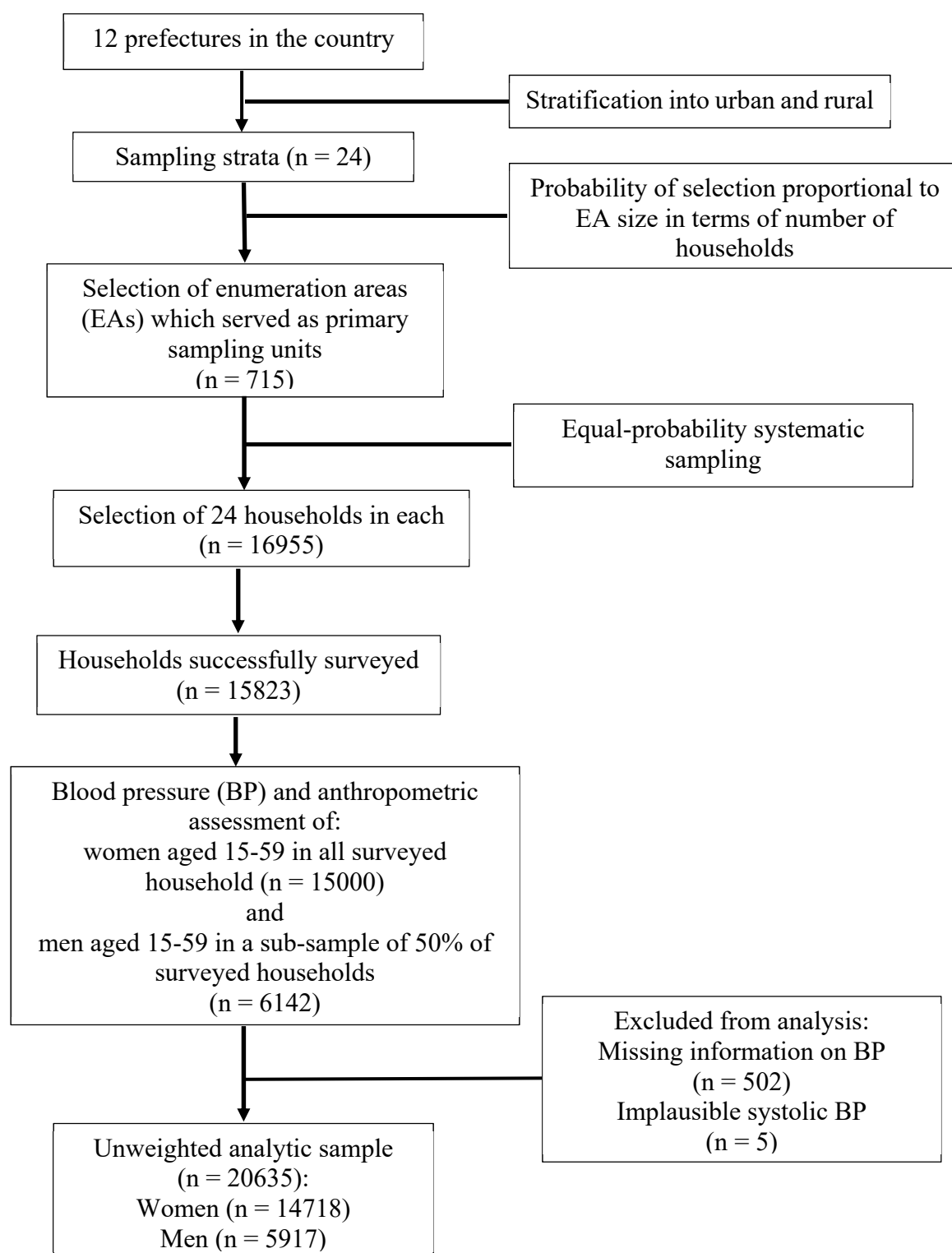
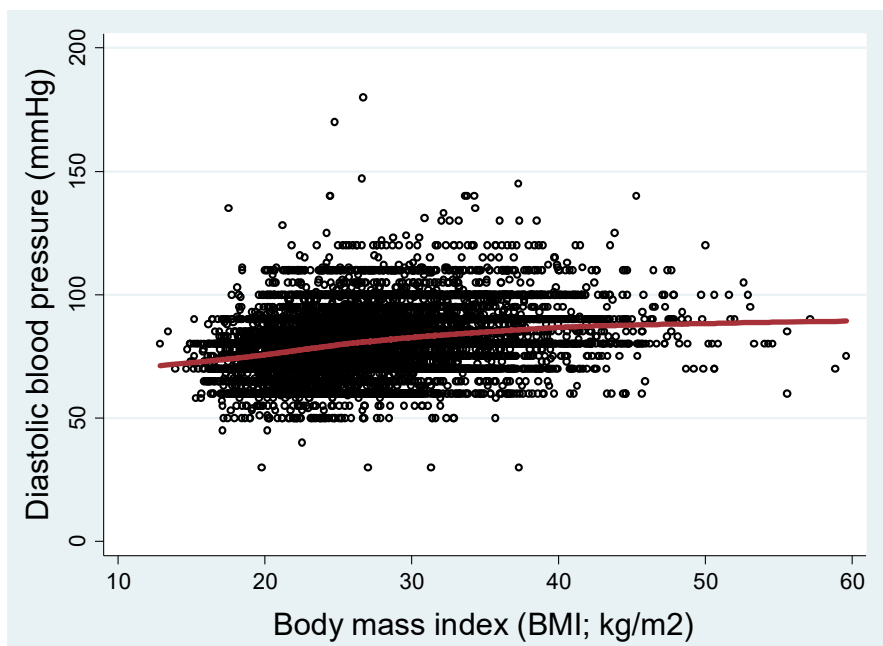
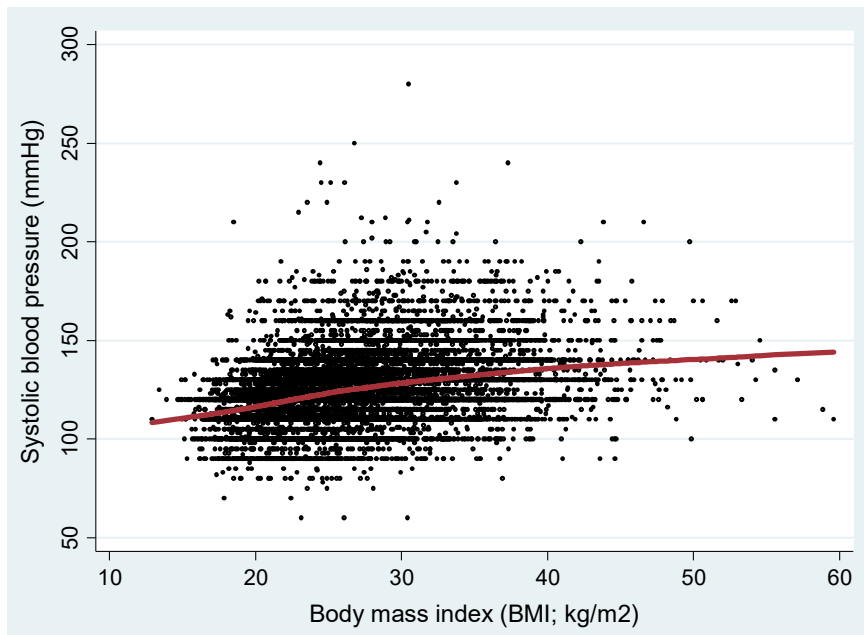
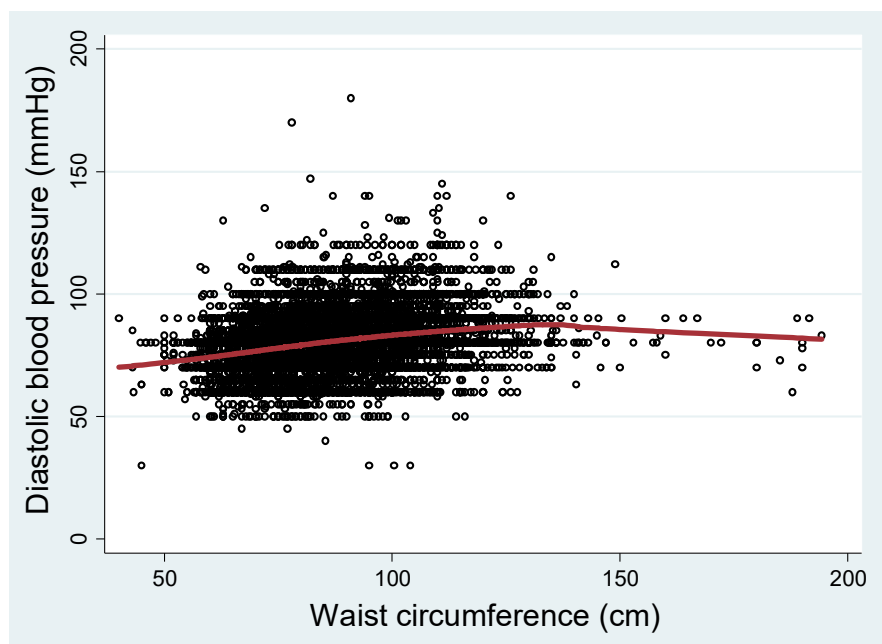
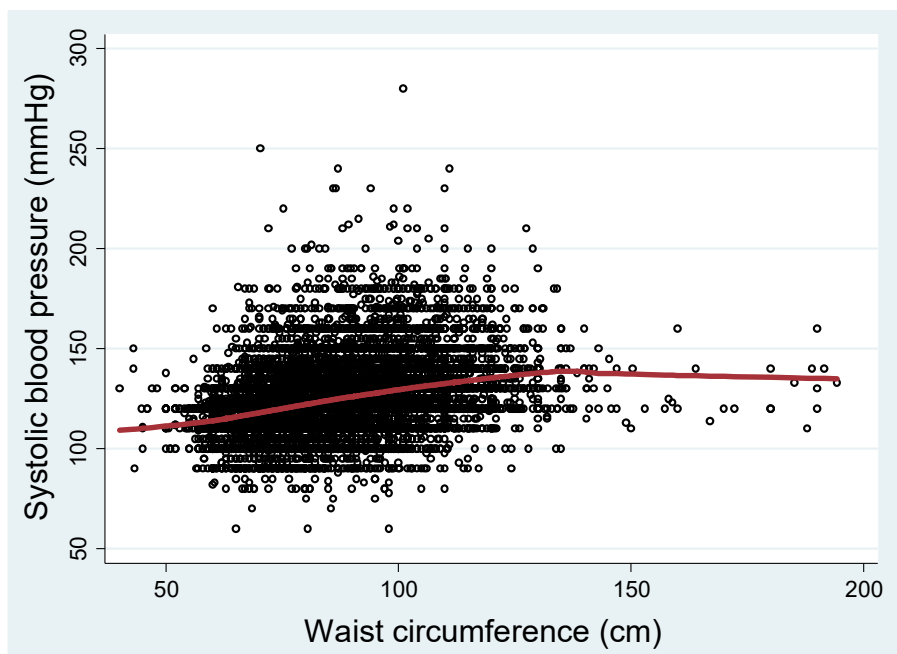
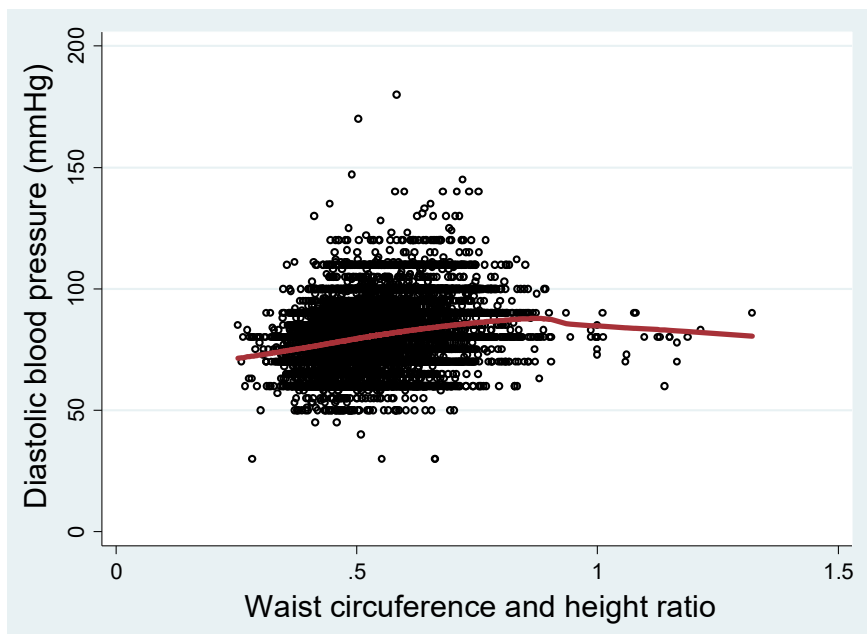
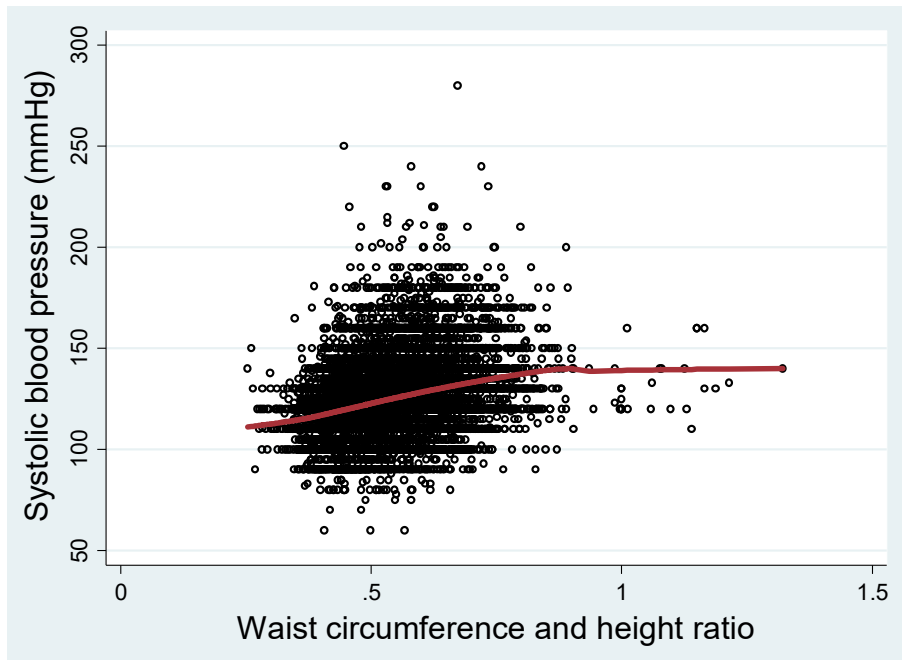


Figure S1. Flowchart illustrating inclusion of participants into the present study.

Figure S2







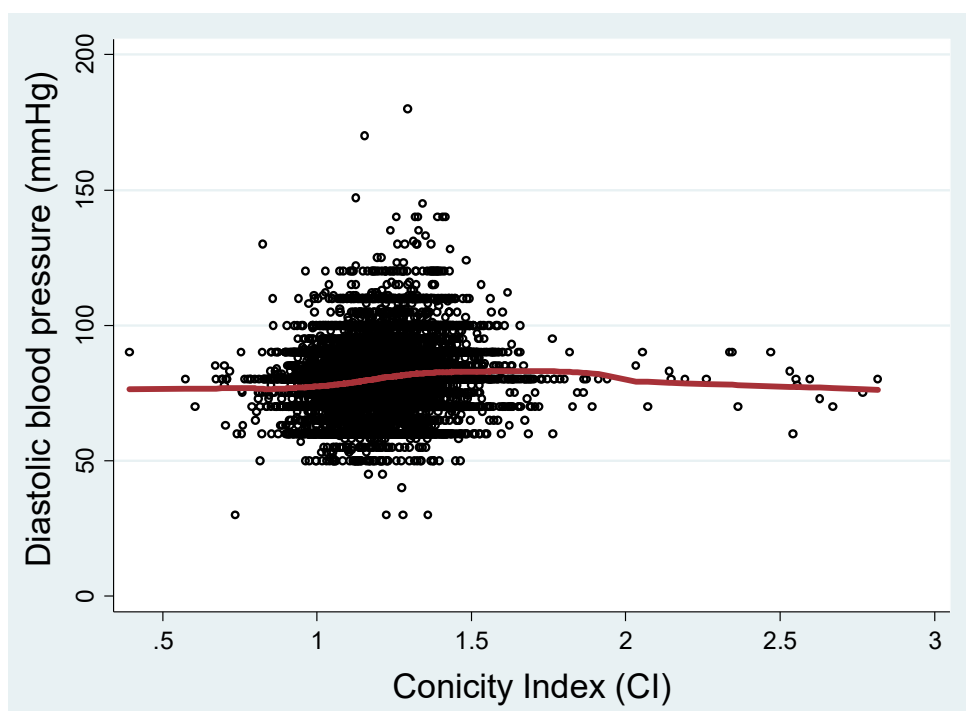
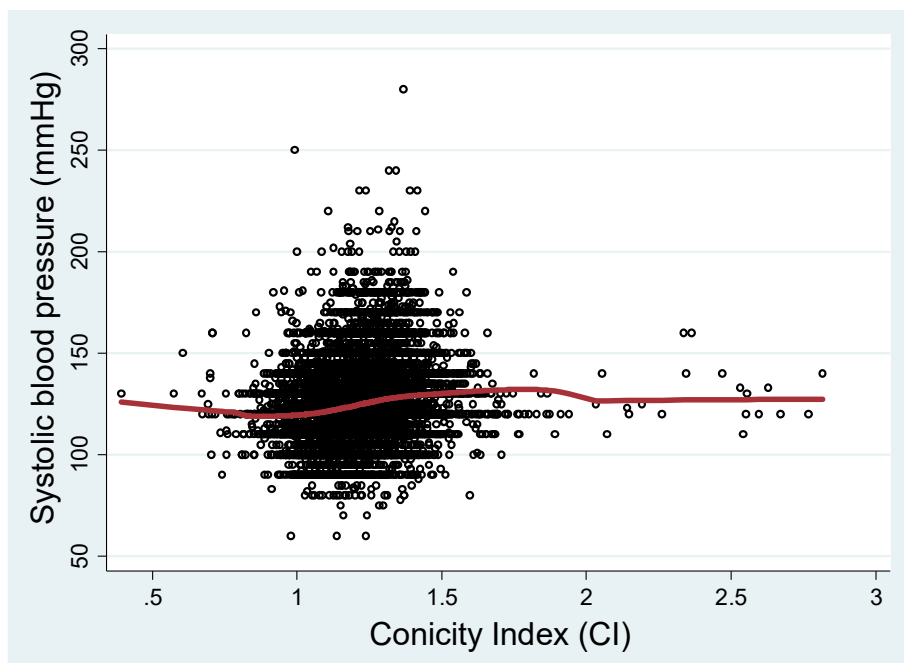
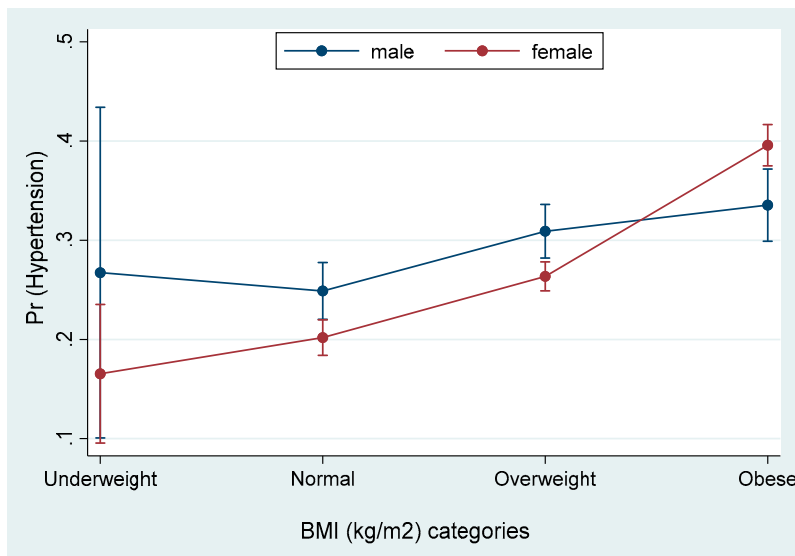
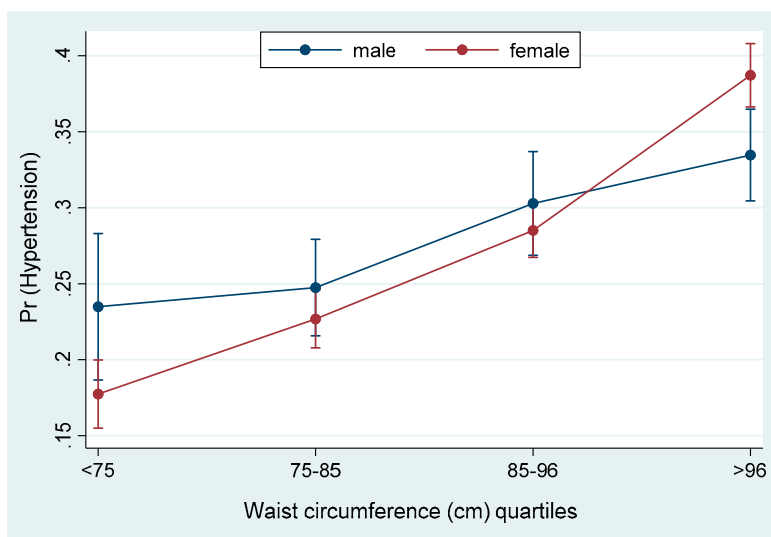


Figure S2. Scatterplots showing systolic and diastolic blood pressures plotted against the four anthropometric indicators along with LOWESS (Locally Weighted Scatterplot Smoothing) lines.

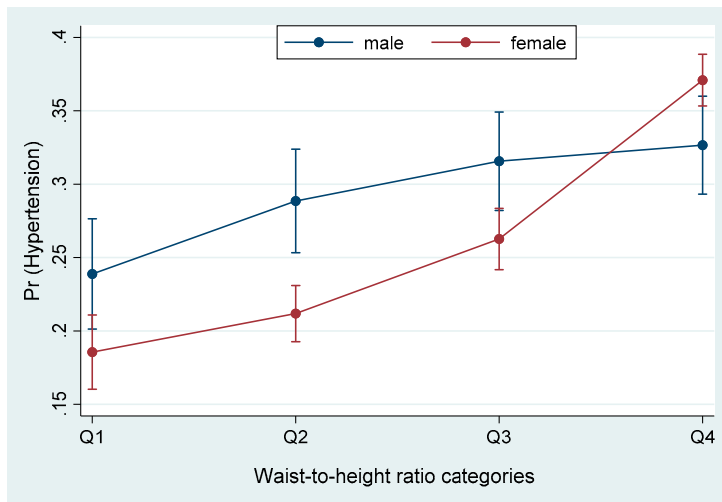
Figure S3



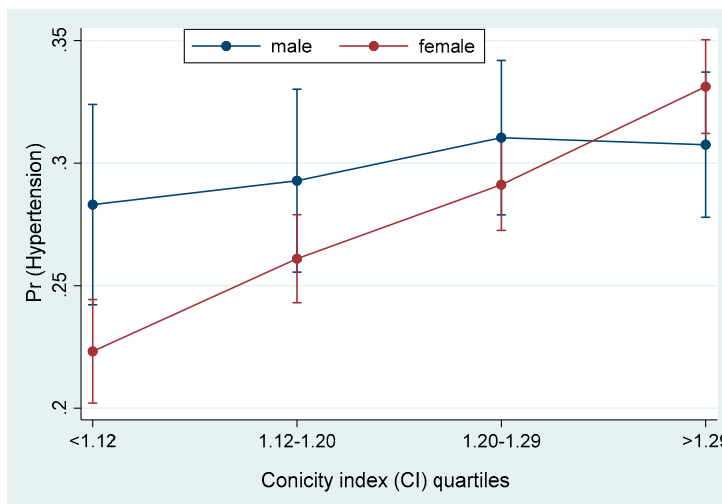
Predictive Margins of HTN probability for BMI (kg/m²) categories with 95% CIs by sex



Predictive Margins of HTN probability for waist circumference (cm) quartiles with 95% CIs by sex



Predictive Margins of HTN probability for waist-to-height ratio categories with 95% CIs by sex



Predictive Margins of HTN probability for Conicity index (CI) quartiles with 95% CIs by sex

Figure S3. Plots of predictive margins with corresponding 95% confidence intervals for each category of the four anthropometric indicators by gender. In the highest category for all four indicators, the red lines representing the females surpassed the blue lines representing the males.