

Supplementary Table 1. Proximate composition of spore, mycelia and cultural broth of *A. camphorata*

Component (g/100g)	Spore	Mycelia	Cultural broth
Ash	1.03	1.79	0.59
Fiber	7.74	8.26	nd ¹
Fat	2.79	2.07	0.13
Protein	36.88	33.32	33.31
Carbohydrate	51.89	54.56	65.81
Crude polysaccharide	13.10	16.23	nd ¹

¹ Not detected.

Supplementary Table 2. Mineral contents of spore, mycelia and cultural broth of *A. camphorata*

Content (mg/100g)	Spore	Mycelia	Cultural broth
K	3460	747	863.56
Na	447	55.8	59.39
Ca	112	61.4	93.50
Mg	1210	148	284.11
Cu	0.34	0.23	nd ¹
Mn	0.74	0.77	0.47
Fe	11.3	13	17.66
Zn	3.37	3.98	0.30
Pb	0.021	0.022	nd ¹
As	5.4×10 ⁻³	2.4×10 ⁻³	4.8×10 ⁻³

¹ Not detected.

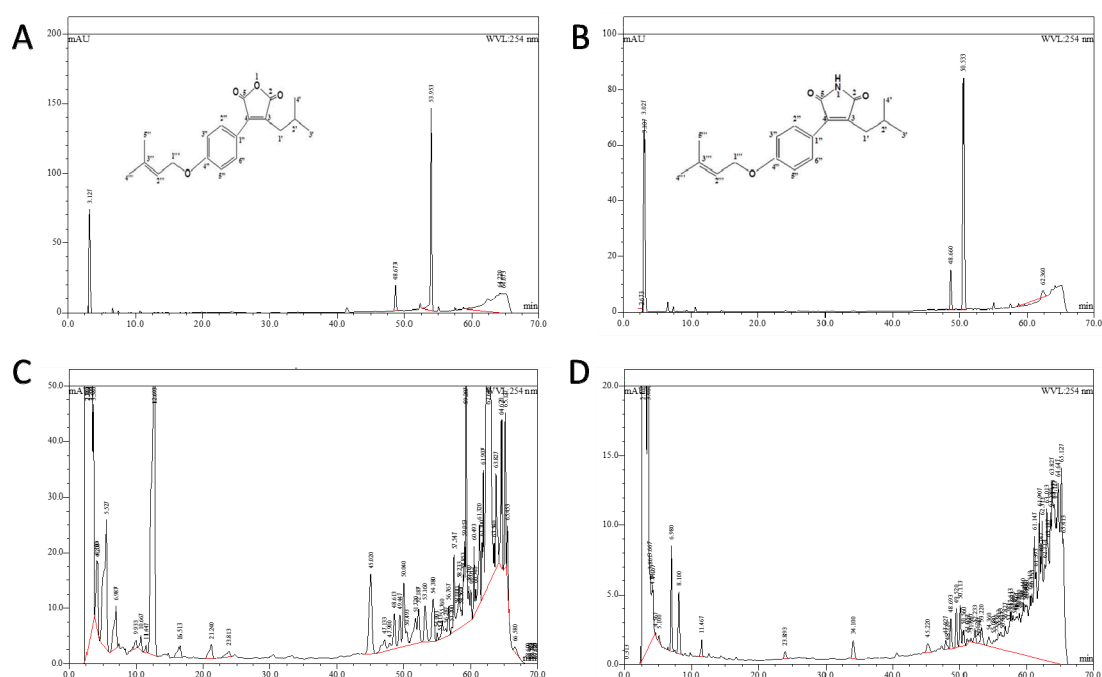
Supplementary Table 3. Fatty acid composition of spore, mycelia and cultural broth of *A. camphorata*

Content	Relative content of fatty acid (%)		
	Spore	Mycelia	Cultural broth
Palmitic acid (C ₁₆ H ₃₂ O ₂)	21.52	22.28	41.04
Palmitoleic acid (C ₁₆ H ₃₀ O ₂)	1.49	1.17	0.98
Stearic acid (C ₁₈ H ₃₆ O ₂)	37.10	33.04	20.78
Oleic acid (C ₁₈ H ₃₄ O ₂)	21.92	20.35	22.67
Linoleic acid (C ₁₈ H ₃₂ O ₂)	14.32	18.09	14.50
Linolenic acid (C ₁₈ H ₃₀ O ₂)	2.79	3.54	1.03

Supplementary Table 4. Amino acid composition of spore, mycelia and cultural broth of *A. camphorata*

Content (g/100g)	Spore	Mycelia	Cultural broth
Asp	2.09	2.3	5.23×10 ⁻²
Glu	4.41	3.12	1.01×10 ⁻¹
Ser	1.75	1.41	2.75×10 ⁻²
His	0.69	0.63	8.23×10 ⁻³
Gly	1.76	1.4	1.59×10 ⁻¹
Thr ¹	1.51	1.27	1.60×10 ⁻²
Arg	2.32	2.15	5.30×10 ⁻²
Ala	3.24	3.04	6.83×10 ⁻²
Tyr	0.88	0.77	8.00×10 ⁻³
Cys	0.17	0.24	9.87×10 ⁻⁴
Val ¹	1.58	1.39	2.28×10 ⁻²
Met¹	0.51	0.46	5.87×10⁻³
Phe ¹	1.57	1.44	1.78×10 ⁻²
Ile ¹	1.14	0.98	1.34×10 ⁻²
Leu ¹	2.42	2.13	3.07×10 ⁻²
Lys ¹	1.82	1.59	2.89×10 ⁻²
Pro ¹	2.32	1.91	1.00×10 ⁻¹
Trp ¹	0.38	0.26	Nd ²
Total amino acids	30.56	26.49	7.14×10 ⁻¹
Essential amino acids	10.93	9.52	1.35×10 ⁻¹

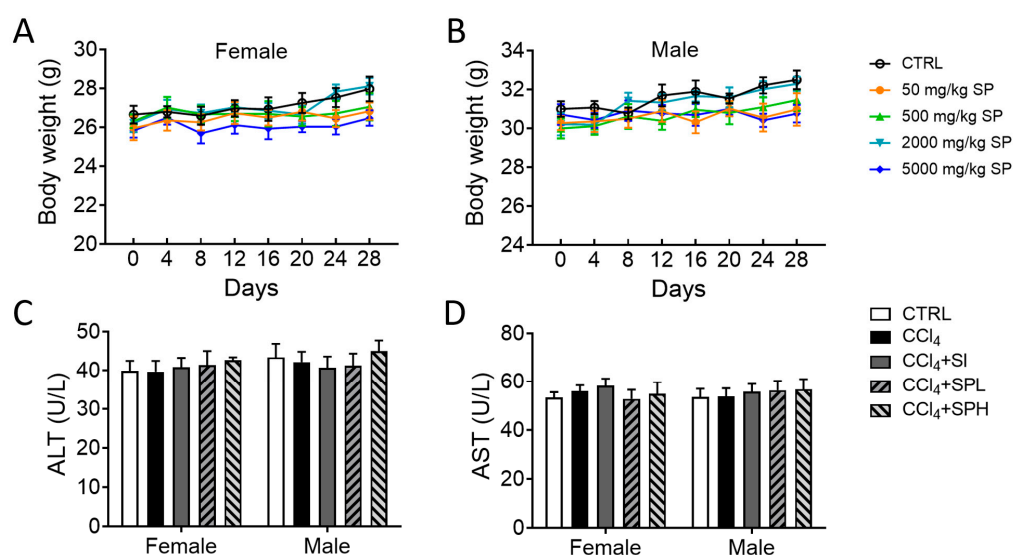
¹ Essential amino acid. ² Not detected.



Supplementary Figure 1. Chromatograms of antrodin standards and methanol extract of *A. camphorata* spore. (A) standard of antrodin A; (B) standard of antrodin B; (C) methanol extract of *A. camphorata* spore; (D) methanol extract of *A. camphorata* mycelia.

Supplementary Table 5. Antrodin A and antrodin B content of spore and mycelia of *A. camphorata*

Content (mg/kg)	Spore	Mycelia
antrodin A	0.7865	0.3158
antrodin B	1.8722	1.2221



Supplementary Figure 2. Body weight change in mice during spore powder of *A. camphorata* by oral gavage daily for 28 days. Data are expressed as means \pm SD (n = 5).

Supplementary Table 6. The organ coefficient results of mice treated orally with spore powder of *A.*

camphorata daily for 28 days. Data are expressed as means \pm SEM (n = 5).

Parameters	Control	50 mg/kg SP	500 mg/kg SP	2000 mg/kg SP	5000 mg/kg SP
<i>Female</i>					
Heart (g/100 g)	0.53 \pm 0.06	0.57 \pm 0.05	0.49 \pm 0.04	0.55 \pm 0.04	0.52 \pm 0.04
Liver (g/100 g)	5.42 \pm 0.17	4.29 \pm 0.07	5.39 \pm 0.48	5.51 \pm 0.24	5.40 \pm 0.16
Spleen (g/100 g)	0.32 \pm 0.03	0.20 \pm 0.05	0.39 \pm 0.04	0.32 \pm 0.01	0.31 \pm 0.04
Lung (g/100 g)	0.52 \pm 0.07	0.63 \pm 0.03	0.59 \pm 0.03	0.51 \pm 0.05	0.60 \pm 0.03
Kidney (g/100 g)	1.25 \pm 0.05	1.19 \pm 0.05	1.14 \pm 0.08	1.21 \pm 0.05	1.12 \pm 0.06
Brain (g/100 g)	1.32 \pm 0.11	1.17 \pm 0.21	0.97 \pm 0.09	1.56 \pm 0.06	1.16 \pm 0.08
Stomach (g/100 g)	0.89 \pm 0.08	0.95 \pm 0.06	0.87 \pm 0.02	0.96 \pm 0.10	0.86 \pm 0.09
Thymus (g/100 g)	0.39 \pm 0.02	0.37 \pm 0.06	0.31 \pm 0.02	0.27 \pm 0.05	0.31 \pm 0.01
<i>Male</i>					
Heart (g/100 g)	0.63 \pm 0.06	0.64 \pm 0.06	0.63 \pm 0.01	0.60 \pm 0.03	0.46 \pm 0.04
Liver (g/100 g)	5.32 \pm 0.23	5.03 \pm 0.21	5.30 \pm 0.21	0.52 \pm 0.19	4.48 \pm 0.23
Spleen (g/100 g)	0.28 \pm 0.03	0.28 \pm 0.03	0.33 \pm 0.01	0.31 \pm 0.01	0.26 \pm 0.02
Lung (g/100 g)	0.59 \pm 0.08	0.62 \pm 0.04	0.68 \pm 0.05	0.61 \pm 0.03	0.53 \pm 0.01
Kidney (g/100 g)	1.37 \pm 0.19	1.34 \pm 0.18	1.70 \pm 0.03	2.02 \pm 0.09	1.51 \pm 0.08
Brain (g/100 g)	0.97 \pm 0.13	1.19 \pm 0.06	1.10 \pm 0.03	1.08 \pm 0.04	1.08 \pm 0.06
Stomach (g/100 g)	0.98 \pm 0.28	0.82 \pm 0.12	0.96 \pm 0.09	1.00 \pm 0.02	0.78 \pm 0.07
Thymus (g/100 g)	0.28 \pm 0.03	0.23 \pm 0.07	0.23 \pm 0.03	0.24 \pm 0.01	0.28 \pm 0.03