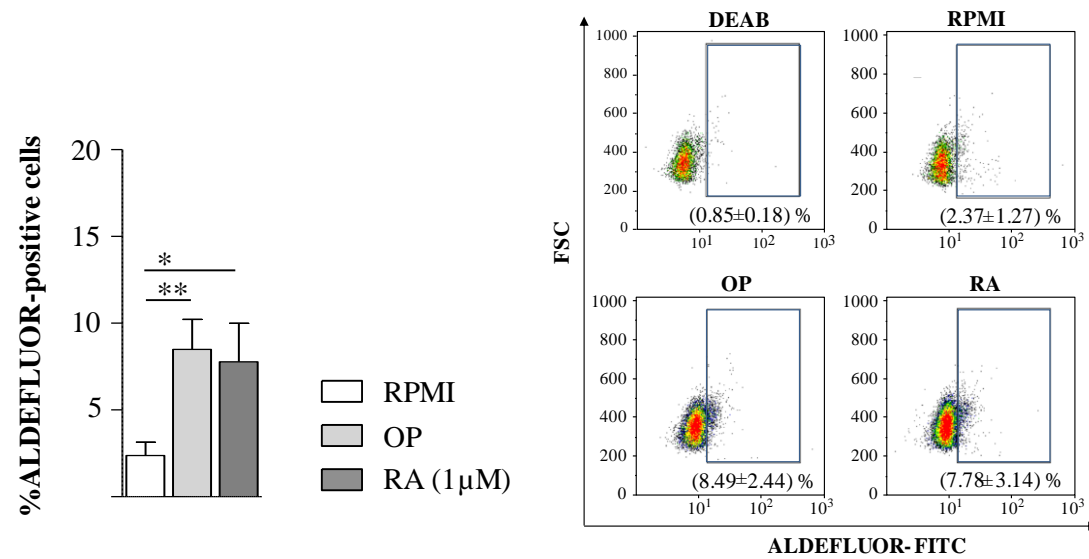
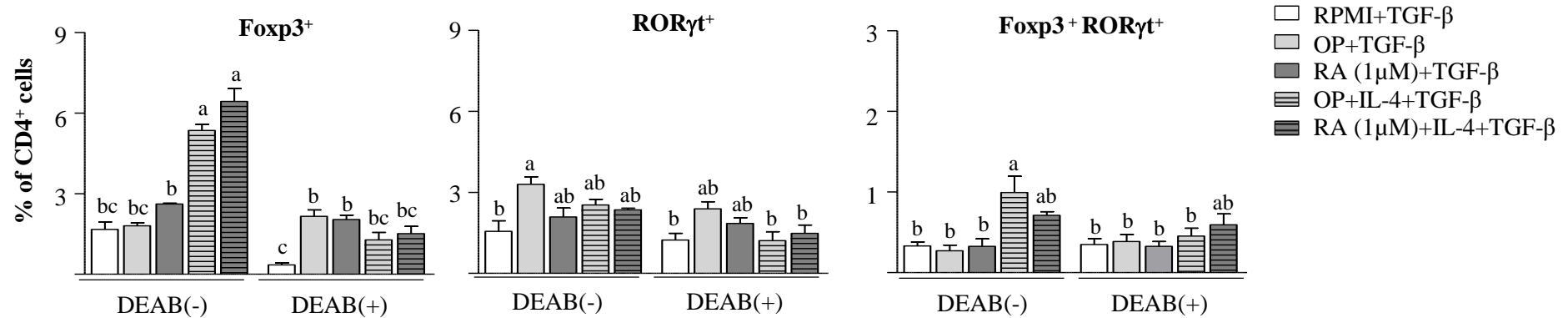


A**B**

Supplemental Figure 3. A. ALDH activity, as assessed by ALDEFLUOR assay, in spleen CD4⁺ T cells from naïve mice cultured without stimuli (RPMI), or with OP or RA for 2 days, followed by stimulation with anti-CD3 and anti-CD28 for 2 additional days. The ALDH inhibitor DEAB was used to determine baseline background fluorescence. Data are means ± SEM (biological and technical triplicates) and statistically significant differences were calculated using unpaired two-tailed Student's t test (* p < 0.05 and ** p < 0.01). **B.** Percentage of Foxp3⁺, RORγt⁺ and Foxp3⁺ RORγt⁺ cells within the total CD4⁺ T cell population in spleen from naïve mice cultured with TGF-β without stimuli (RPMI), or with OP, RA, OP+IL-4, or RA+IL-4 for 2 days, in the absence or presence of the ALDH inhibitor DEAB, followed by stimulation with anti-CD3 and anti-CD28 for 2 additional days. Data are means ± SEM (biological and technical triplicates). Different letters indicate statistically significant differences (p < 0.05) calculated using one-way ANOVA, followed by Tukey post-hoc test.