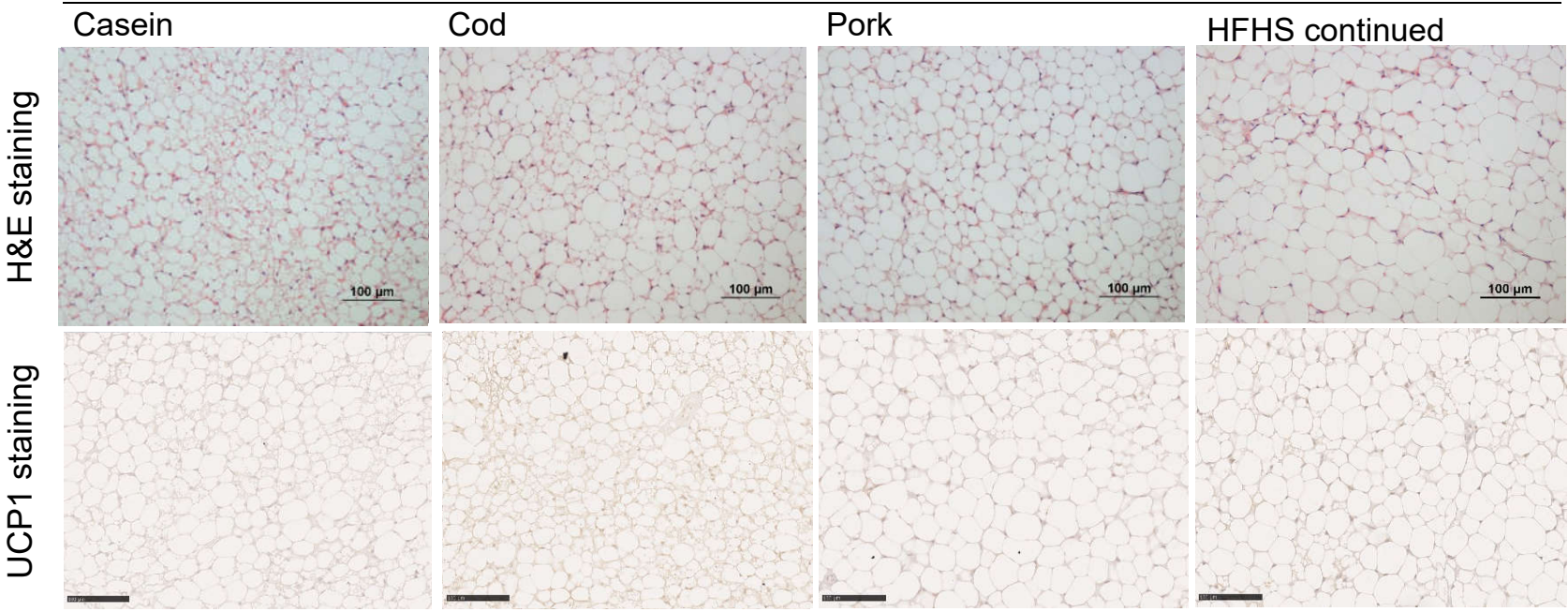
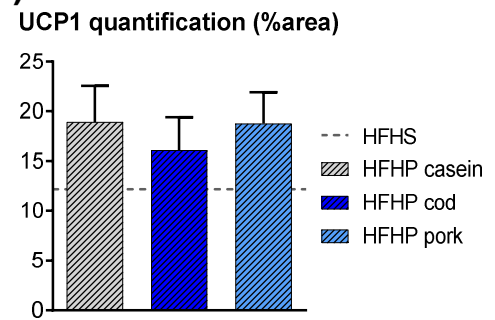


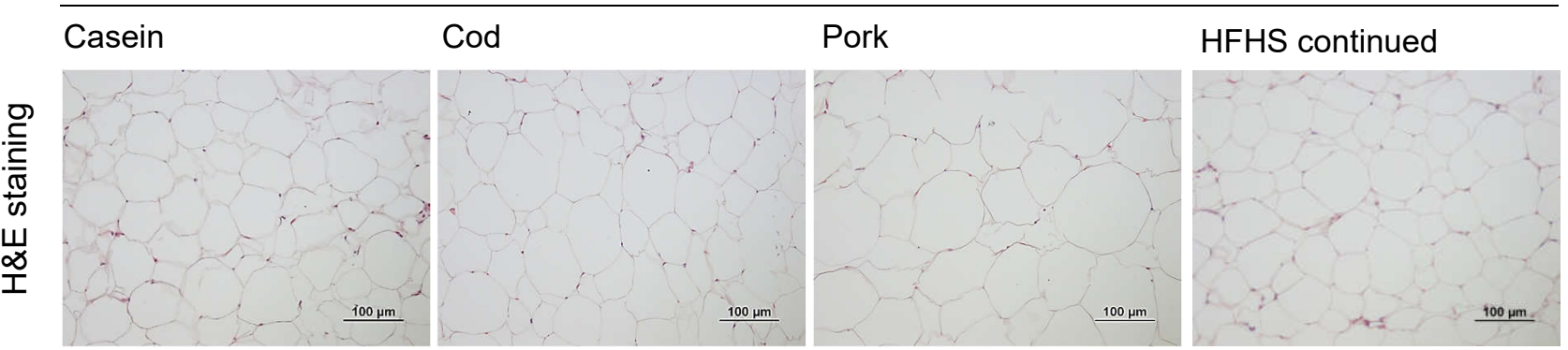
(a) iBAT



(b)



(c) iWAT



(d)

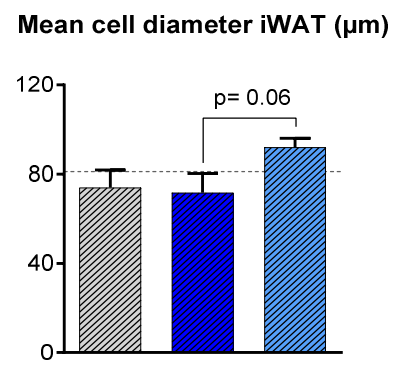


Figure S3. (a) Hematoxylin and eosin (H&E) staining of interscapular brown adipose tissue (iBAT) after 6 weeks of feeding high-fat/high-protein (HF/HP) diets based on different protein sources *ad libitum* to already obese mice, in addition to one group fed the obesogenic high fat high sucrose (HF/HS) diet for 6 weeks (scalebar = 100µm). **(b)** Immunohistochemical staining with UCP1-antibody and **(c)** quantification of per cent area stained with UCP1-antibody demonstrated as mean \pm SEM (n=3-4). **(d)** HE staining of inguinal white adipose tissue (iWAT) (scalebar = 100µm). **(e)** Mean cell diameter (\pm SEM) of adipocytes from iWAT (n=4-5).