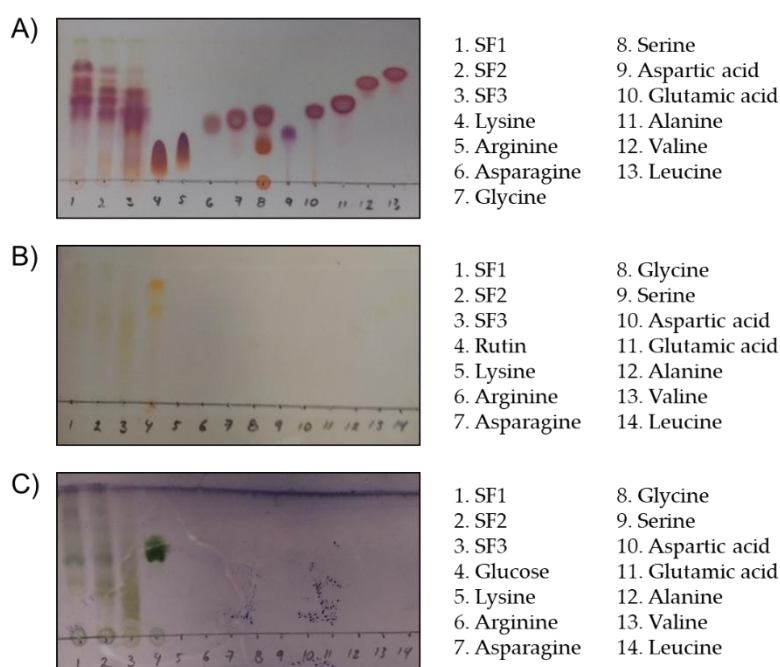
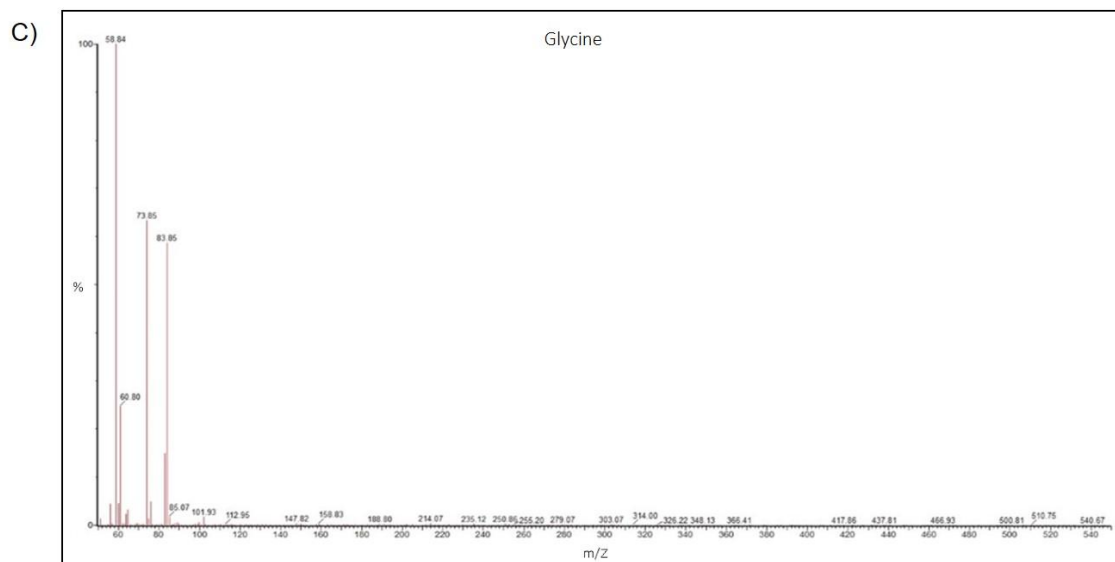
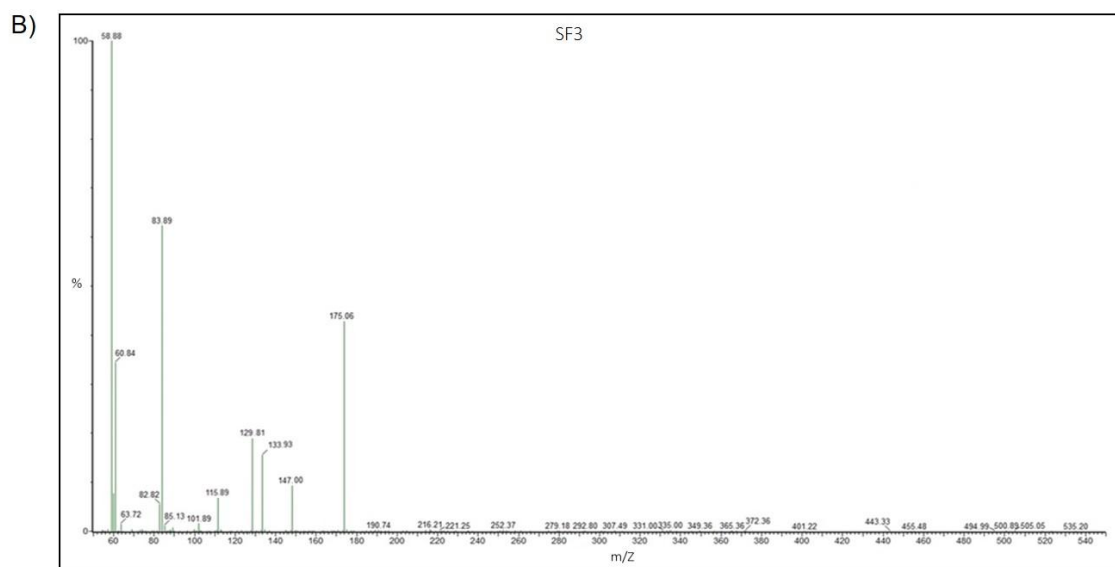
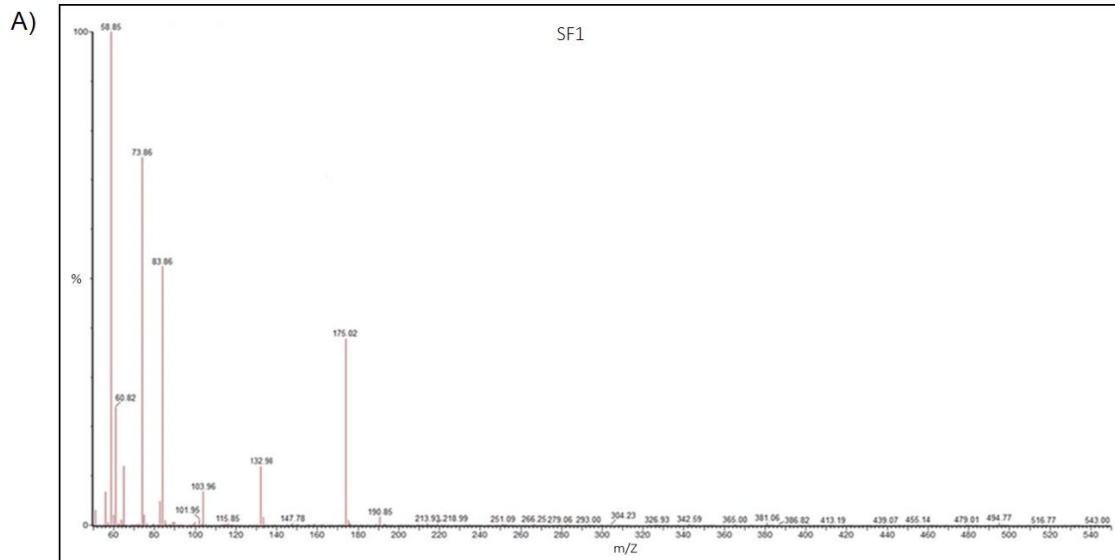
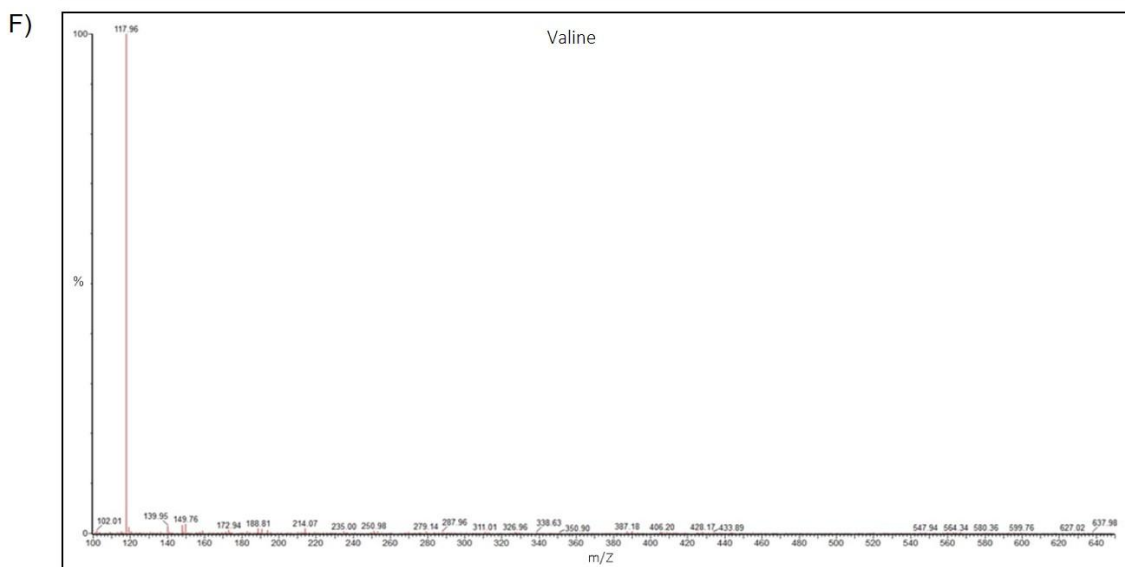
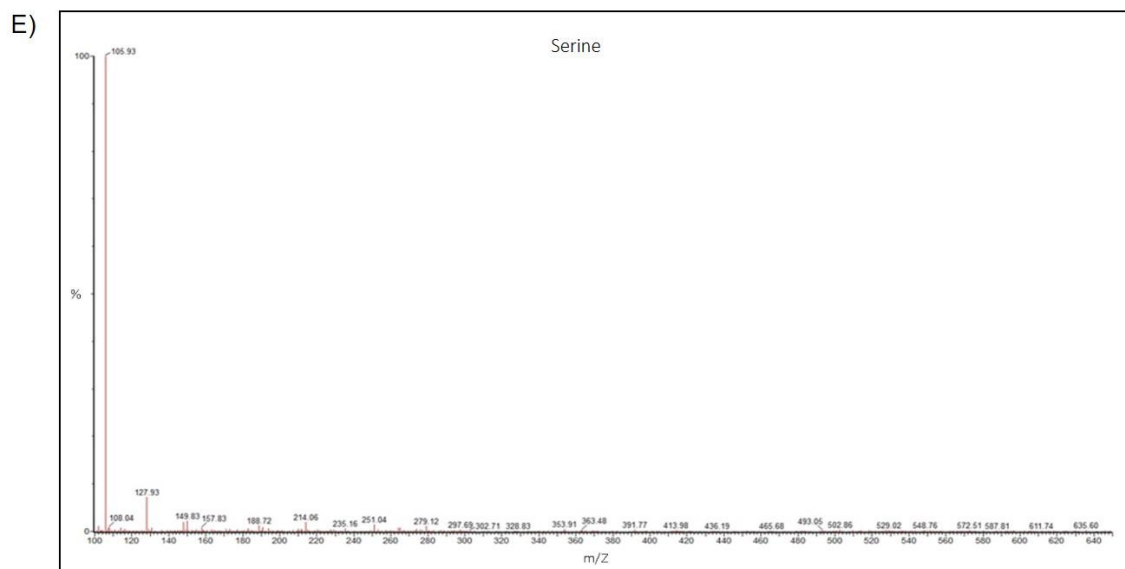
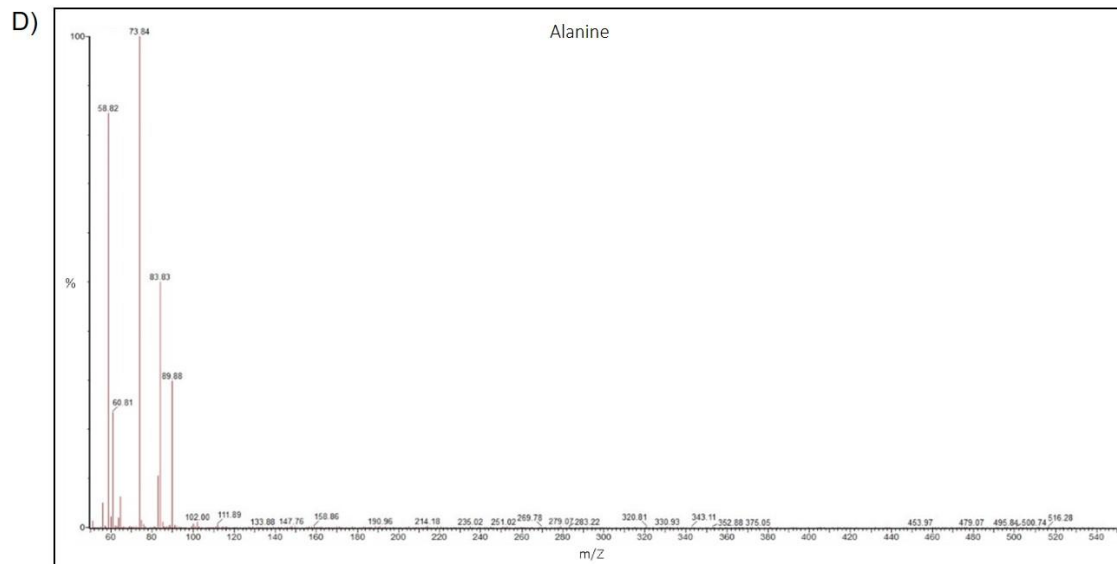


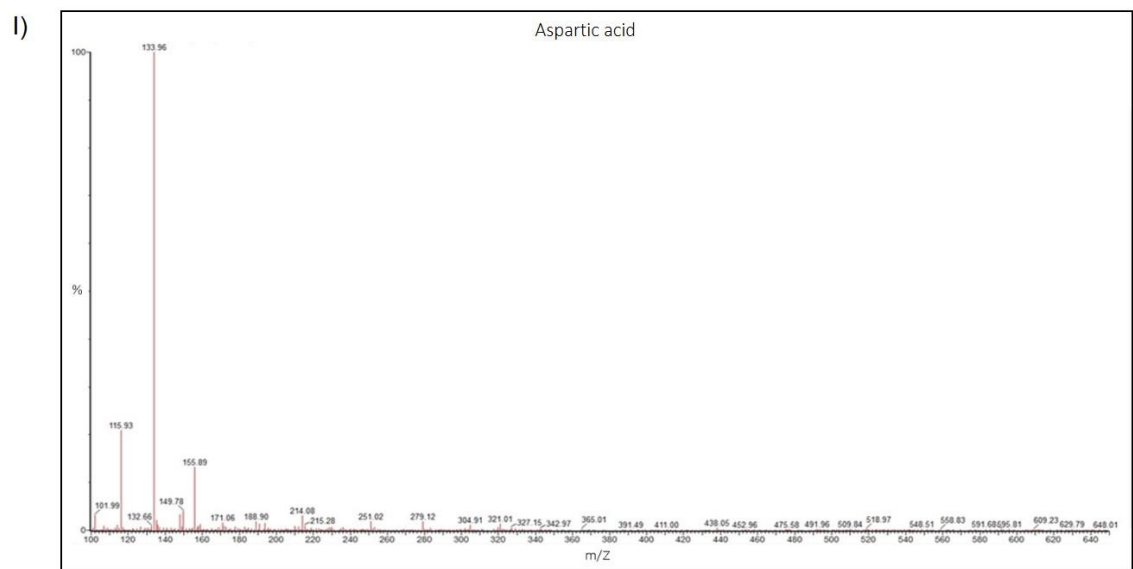
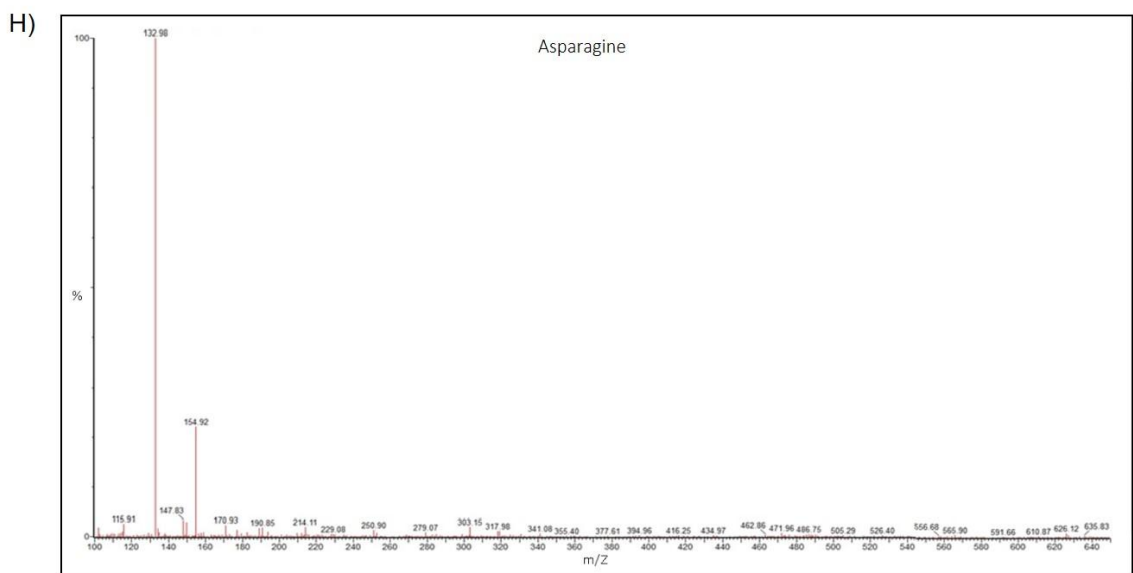
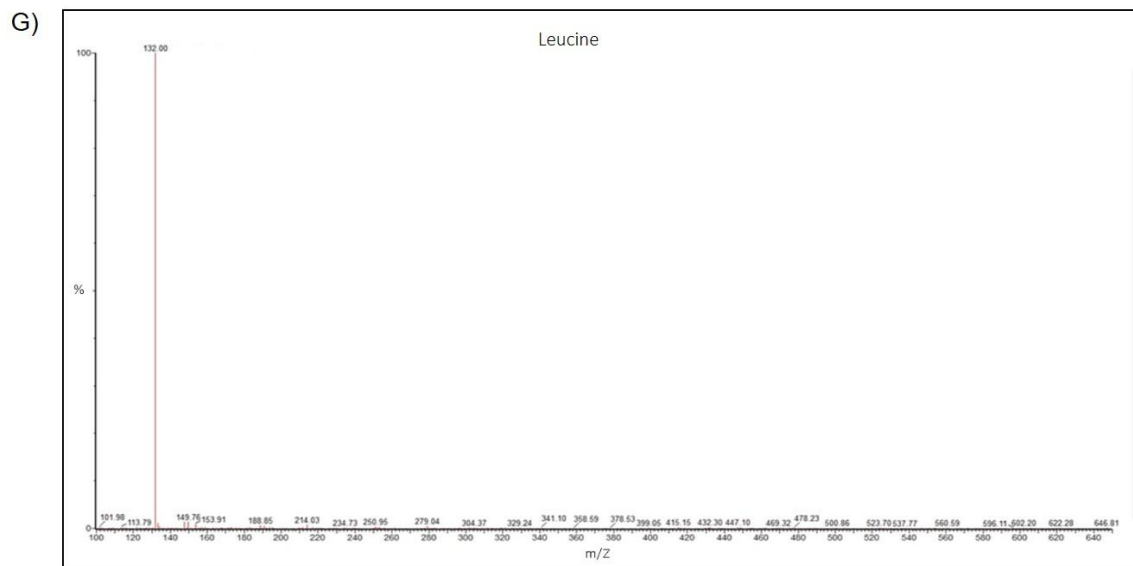
**Supplementary Figure 1.** Effect of C4 on Ang II-induced ICAM-1 expression, 12 hrs after treatment. Arrows indicate the ICAM-1 label. Microphotographs taken with a 40X objective. LOS = Losartan; C4 = Combination of SF1 and SF3, 10 µg/mL each.



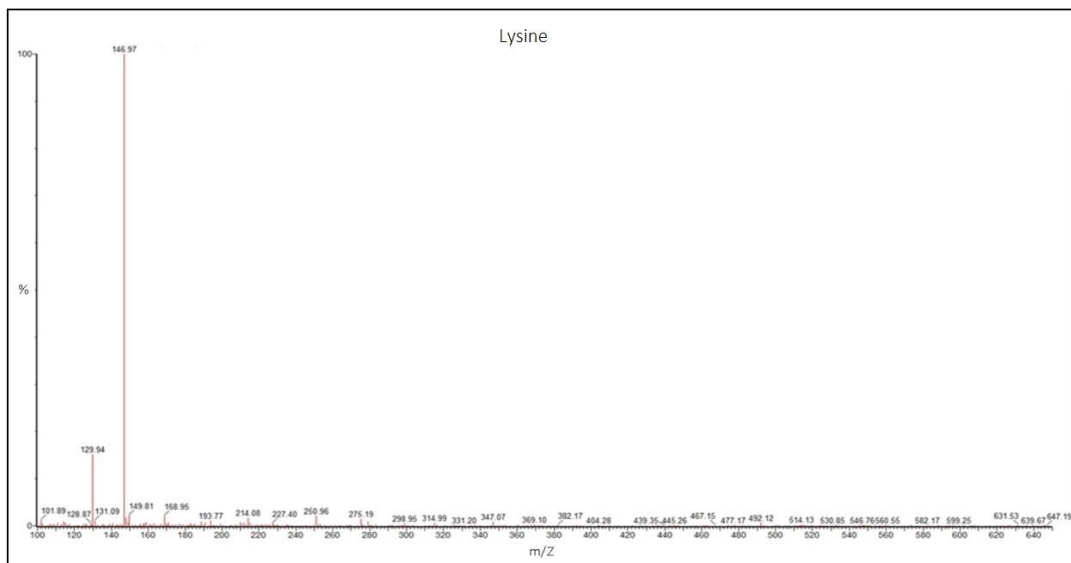
**Supplementary Figure 2.** Thin-layer chromatography. Separation of compounds in the subfractions of *Cucumis sativus* using normal-phase TLC and the system *n*-butanol: acetone: glacial acetic acid: water (35: 35: 10: 20 v/v). The spots were sprayed with ninhydrin to visualize amino acids (A), aminoethanol dimethylborate to visualize flavonoids (B), and 4-hydroxybenzaldehyde to visualize polysaccharides (C).



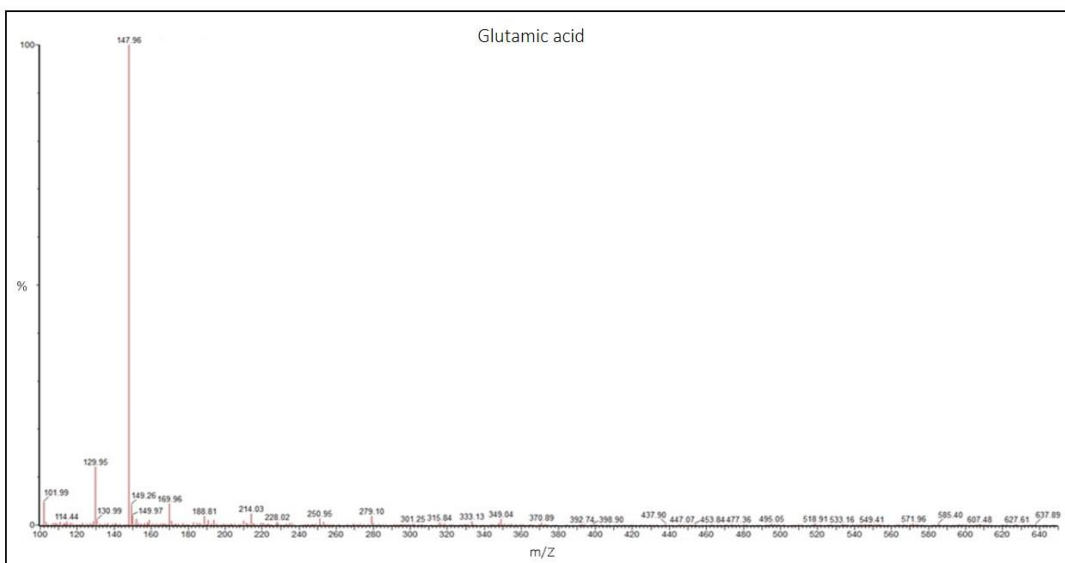




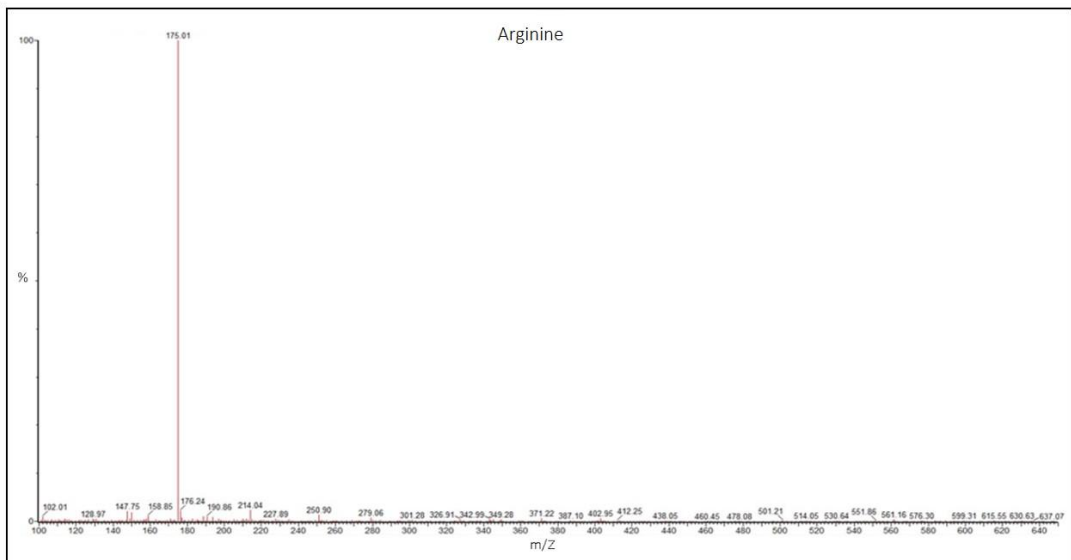
J)



K)



L)



**Supplementary Figure 3.** Mass spectrometry. A) SF1 contains glycine, asparagine and arginine (peaks 58.85, 132.98 and 175.02, respectively). B) SF3 contains glycine, aspartic acid, lysine and arginine (peaks 58.88, 133.93, 147.00 and 175.06, respectively). Amino acid standards are shown in C to L: C) Glycine, D) Alanine, E) Serine, F) Valine, G) Leucine, H) Aspartic acid, I) Asparagine, J) Lysine, K) Glutamic acid and L) Arginine.