

Supplementary Material: The Combined Use of Remote Sensing and Social Sensing Data in the Fine-grained Urban Land Use Mapping: A Case Study in Beijing, China

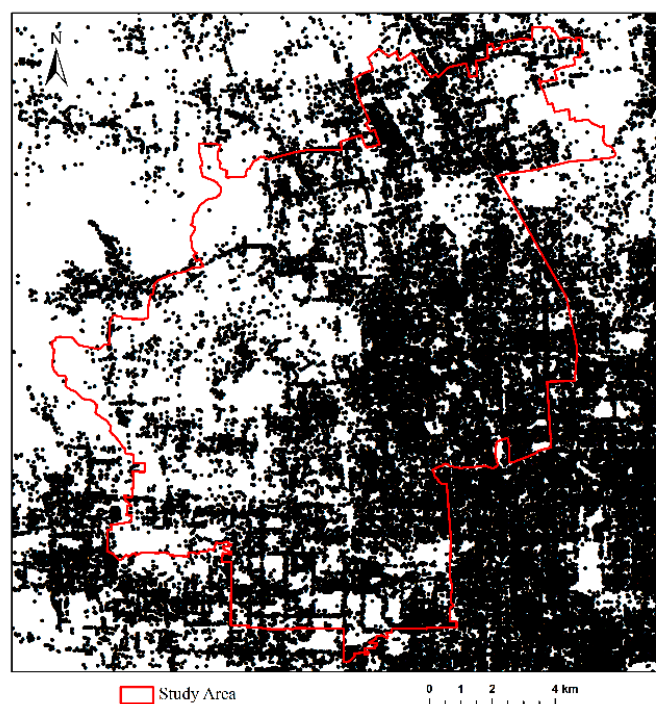


Figure S1. All Baidu POIs within the study area of urban Haidian District.

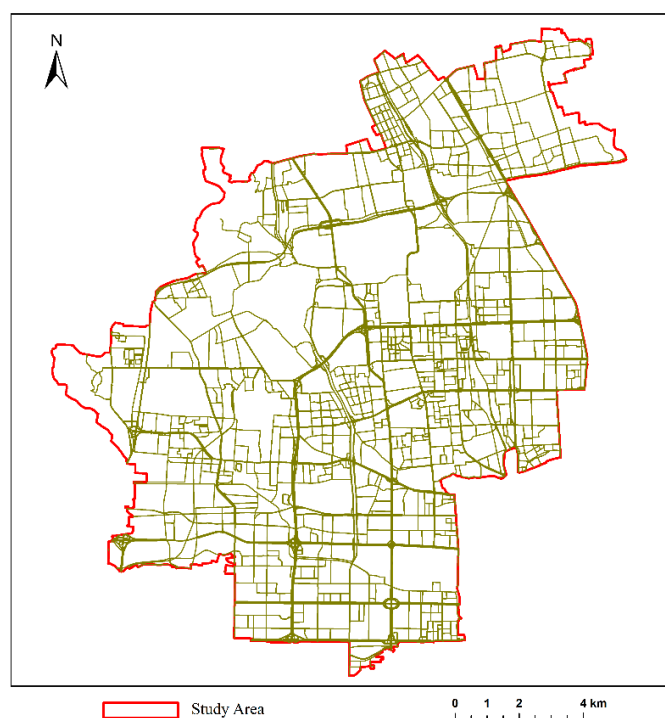


Figure S2. Preprocessed OpenStreetMap road network within the study are of urban Haidian District.

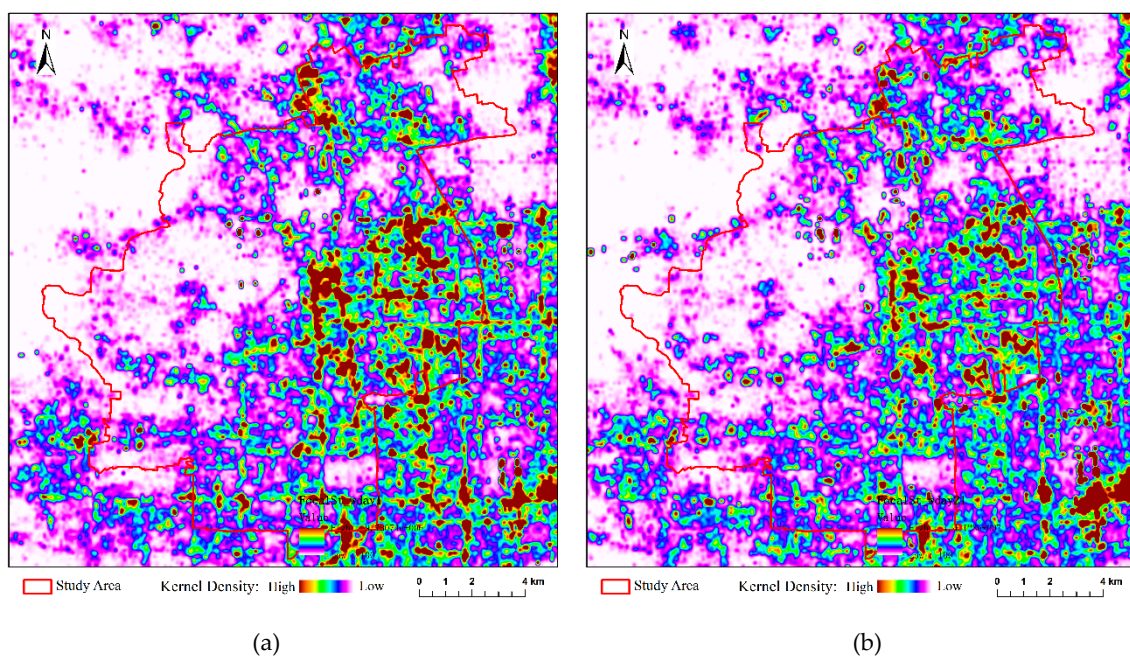


Figure S3. The kernel density of Weibo posts during 9:00-12:00 (a) and 21:00-24:00 (b) on weekdays within the study area of urban Haidian District.



Figure S4. Examples of misclassified open space parcels, misclassified business parcels, over-segmentation, and under-segmentation.