

Article

# A Phase-Offset Estimation Method for InSAR DEM Generation Based on Phase-Offset Functions

José Claudio Mura <sup>1,\*</sup>, Muriel Pinheiro <sup>2</sup>, Rafael Rosa <sup>2</sup> and João Roberto Moreira <sup>2</sup>

<sup>1</sup> National Institute for Space Research (INPE), São José dos Campos, 12227-010 SP, Brazil

<sup>2</sup> Orbisat da Amazônia S. A (ORBISAT), São José dos Campos, 12244-000 SP, Brazil;  
E-Mails: murielaline86@gmail.com (M.P.); rafael@orbisat.com.br (R.R.);  
joao.moreira@orbisat.com.br (J.R.M.)

\* Author to whom correspondence should be addressed; E-Mail: mura@dpi.inpe.br.

Received: 9 January 2012; in revised form: 5 March 2012 / Accepted: 6 March 2012 /

Published: 20 March 2012

---

**Abstract.** This paper presents a novel method for estimating the absolute phase offset in interferometric synthetic aperture radar (SAR) measurements for digital elevation model (DEM) generation. The method is based on “phase-offset functions (POF),” relating phase offset to topographic height, and are computed for two different overlapping interferometric data acquisitions performed with considerably different incidence angles over the same area of interest. For the purpose of extended mapping, opposite viewing directions are preferred. The two “phase-offset functions” are then linearly combined, yielding a “combined phase-offset function (CPOF)”. The intersection point of several straight lines (CPOFs), corresponding to different points in the overlap area allows for solving the phase offset for both acquisitions. Aiming at increasing performance and stability, this intersection point is found by means of averaging many points and applying principal component analysis. The method is validated against traditional phase offset estimation with corner reflectors (CR) using real OrbisAR-1 data in X- and P-band.

**Keywords:** SAR Interferometry; phase offset estimation; absolute phase; DEM

---

## 1. Introduction

SAR interferometry is a well-known technique used to generate a Digital Elevation Model (DEM), which converts the absolute interferometric phase data into height data [1–4]. The absolute

interferometric phase data can be obtained by removing the ambiguity of  $2\pi$  from the measured interferometric phase using a phase-unwrapping algorithm [5–8]. For InSAR data there is a residual phase–offset value in the interferogram after phase unwrapping, which is a constant value for the whole scene, and which must be estimated. This phase component comes mainly from the phase induced by the interferometric SAR processing strategy, a not well-determined internal delay, and from the ratio between the range resolution and the wavelength used.

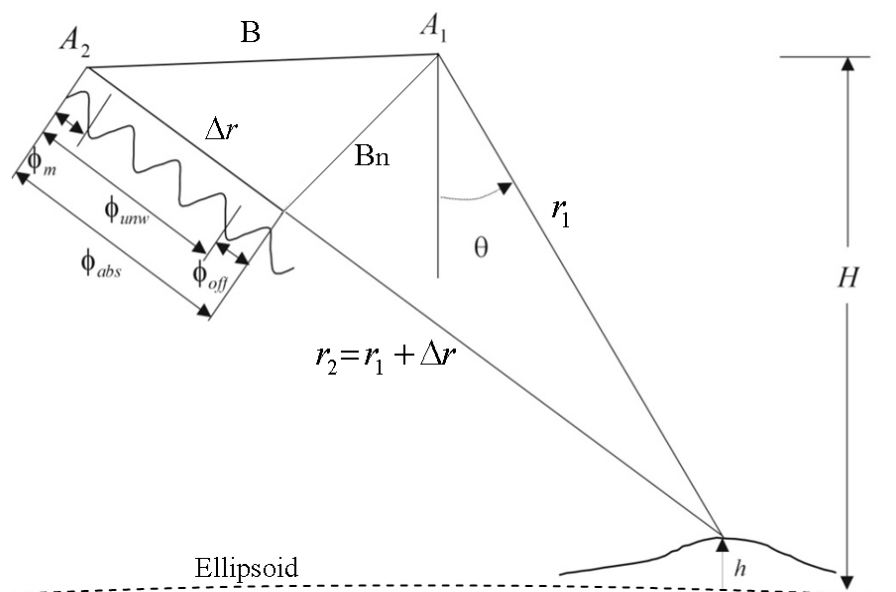
The absolute interferometric phase estimation is often solved by using ground control points (GCPs) within the scene or through the use of an already calibrated area. Automatic methods have also been proposed, based on spectral diversity [9–11] and on a maximum likelihood estimator [12]. By using GCPs, one can estimate the phase–offset values with great accuracy, making the generation of high accuracy DEMs possible. However, in certain regions of dense forest or in fluvial regions, it can be difficult to have access to appropriate areas to deploy the corner reflectors (GCPs). Dispensing the GCPs can lead not only to lower implementation cost, but also to a decrease in environmental impact associated with corner deployment.

This paper describes a method to estimate the phase–offset value automatically using a pair of unwrapped interferometric phases, whose data have been acquired in opposite flight directions and with an overlap area between the tracks. For a selected point in the overlapped area, a function relating phase–offset value to height value, called here *phase–offset function (POF)*, can be built for each acquisition within a known height interval. The *POFs of both acquisitions* can be combined through a linear combination to remove its dependency on height, creating a *combined phase–offset function (CPOF)*, whose slope is range dependent. The same procedure can be extended to a set of points spread over the overlapped area, creating a set of *CPOFs* whose intersections provide the estimate of the phase–offset values for both acquisitions. The performance of this method has been evaluated using data from the OrbiSAR-1 System in X and P bands; the results are compared with those obtained by using ground control points. This method has also been tested with OrbiSAR-1 data from an Amazon forest area without the use of GCPs to evaluate its performance in this environment for topographic mapping.

## 2. Proposed Method

SAR Interferometry is based on the measurement of the phase difference from the complex-valued resolution elements of two co-registered images, acquired by two separated antennas (baseline B) as shown in Figure 1. The measured interferometric phase is wrapped in  $2\pi$ , represented by  $\phi_m$  in Figure 1. The grid of the wrapped phase values is transformed into a grid of unwrapped phase values by using a phase-unwrapping algorithm that adds to each measured phase value a constant integer multiple of  $2\pi$ , represented by  $\phi_{unw}$  in Figure 1.

The phase–offset value, represented by  $\phi_{off}$  in Figure 1, is a constant phase component for the whole scene that must be estimated and added to the unwrapped phase in order to obtain the absolute interferometric phase  $\phi_{abs}$ , from which a digital elevation model (DEM) can be generated. The phase–offset value can be positive or negative, and is sometimes greater than  $2\pi$ , depending on the interferometric SAR processing strategy used.

**Figure 1.** Representation of the interferometric phase components.

The proposed method to estimate the phase-offset value for an InSAR airborne system is based on the following assumptions: the interferometric SAR images are generated in zero-Doppler geometry [13], and the atmospheric effects are negligible. Considering the previous assumptions and taking antenna  $A_1$  as the reference (Figure 1), the following equations can be written

$$\phi_{abs} = \phi_{unw} + \phi_{off} \quad (1)$$

$$\Delta r = \frac{\lambda p}{4\pi} \phi_{abs} \quad (2)$$

$$r_1 = r_2 - \Delta r = r_2 - \frac{\lambda p}{2\pi} \phi_{abs} \quad (3)$$

with  $p = 1$  for monostatic acquisitions and  $p = 2$  for bistatic acquisitions schemes.

Assuming a flat-earth geometry, for sake of simplicity, the terrain height can be represented by:

$$h = H - r_1 \cos \theta \quad (4)$$

From the Equations (2) and (3), the Equation (4) can be rewritten as

$$h = H - \left( r_2 - \frac{\lambda p}{2\pi} \phi_{abs} \right) \cos \theta \quad (5)$$

where  $h$  is the terrain height,  $H$  is the platform altitude and  $\theta$  the look-angle for the antenna  $A_1$ .

The proposed method is based on the acquisition mode shown in Figure 2, where two InSAR acquisitions, using the same SAR configuration, are done in opposite flight directions, over a common area, which represents the usual mode for systematic mapping to diminish the shadow and layover effects. In Figure 2, the height  $h_p$  of a point P in the overlapped area can be written, for both acquisitions, based on the Equation (5), by:

$$h_p = H_1 - \left( r_{p1} - \frac{\lambda p}{2\pi} \phi_{abs1} \right) \cos \theta_1 = H_2 - \left( r_{p2} - \frac{\lambda p}{2\pi} \phi_{abs2} \right) \cos \theta_2 \quad (6)$$

where  $\phi_{abs1}$  and  $\phi_{abs2}$  are the absolute phase of the first and second acquisition, respectively.

Equation (6) can be rewritten as

$$(H_1 - r_{p1} \cos \theta_1) + \frac{\lambda p}{2\pi} \phi_{abs1} \cos \theta_1 = (H_2 - r_{p2} \cos \theta_2) + \frac{\lambda p}{2\pi} \phi_{abs2} \cos \theta_2, \quad (7)$$

$$h_p + \frac{\lambda p}{2\pi} \phi_{abs1} \cos \theta_1 = h_p + \frac{\lambda p}{2\pi} \phi_{abs2} \cos \theta_2, \quad (8)$$

$$\phi_{abs1} \cos \theta_1 = \phi_{abs2} \cos \theta_2 \quad (9)$$

Equation (9) shows that the absolute phases of both acquisitions, for a point P with height  $h_p$ , are only related by their incident angles. From this equation, the phase-offset  $\phi_{off1}$  can be related as a function of  $\phi_{off2}$ , as follows:

$$\phi_{abs1} \cos \theta_1 = \phi_{abs2} \cos \theta_2 = (\phi_{unw1} + \phi_{off1}) \cos \theta_1 = (\phi_{unw2} + \phi_{off2}) \cos \theta_2, \quad (10)$$

$$\phi_{unw1} \cos \theta_1 + \phi_{off1} \cos \theta_1 = \phi_{unw2} \cos \theta_2 + \phi_{off2} \cos \theta_2, \quad (11)$$

$$\phi_{off1} = \phi_{off2} (\cos \theta_2 / \cos \theta_1) + \phi_{unw2} (\cos \theta_2 / \cos \theta_1) - \phi_{unw1}, \quad (12)$$

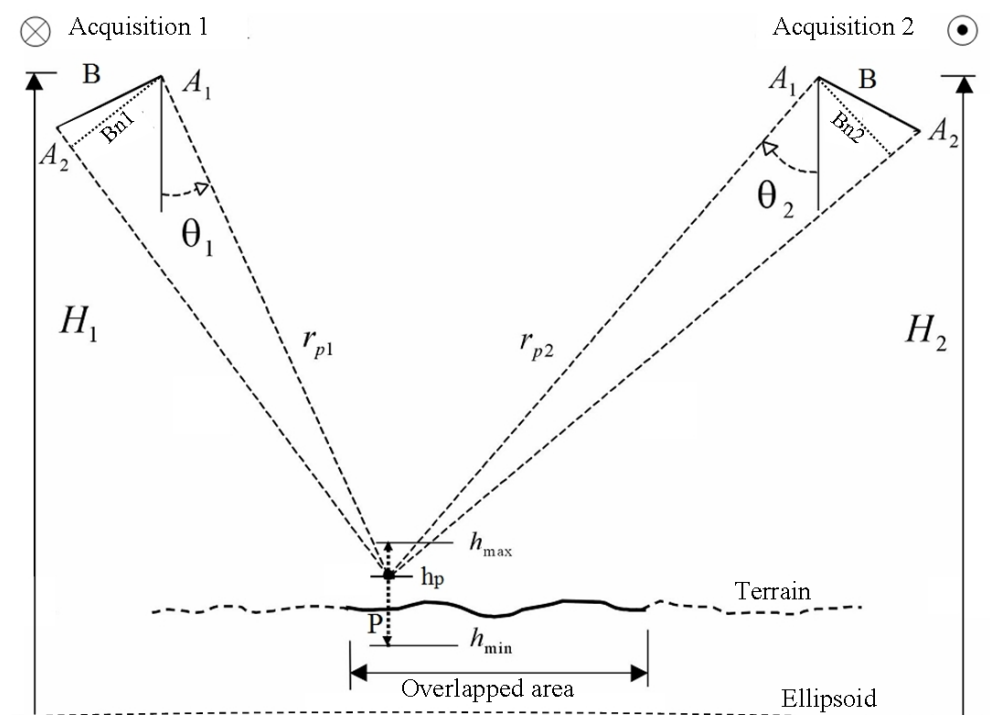
$$\phi_{off1} = \phi_{off2} K_\theta + R_{ph}, \quad (13)$$

with

$$K_\theta = \cos \theta_2 / \cos \theta_1 \text{ and } R_{ph} = \phi_{unw2} K_\theta - \phi_{unw1} \quad (14)$$

Considering that  $K_\theta$  and  $R_{ph}$  are constant values at the position P with the height  $h_p$ , the phase-offset value  $\phi_{off1}$  can be seen as a linear combination of  $\phi_{off2}$ , depending on the relation of the incident angle and the unwrapped phase difference between the two acquisitions.

**Figure 2.** Acquisition mode of airborne InSAR system for systematic mapping.



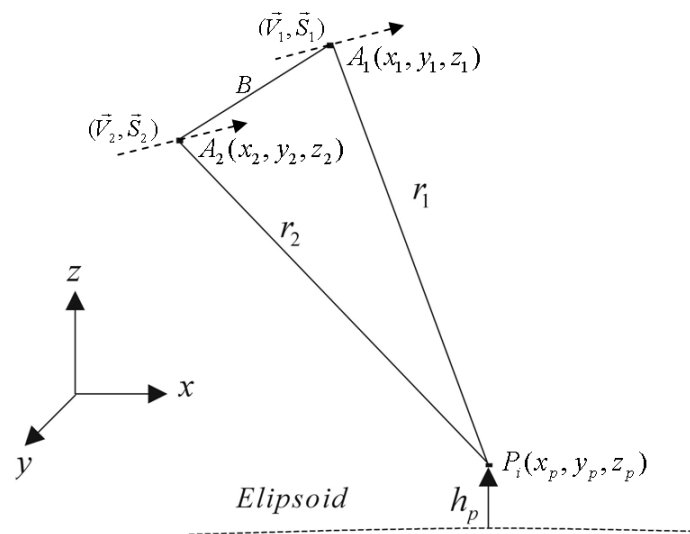
In order to build up the phase-offset function, we first consider the absolute phase value of a generic point  $P_i$  selected, based on its geographic coordinate, with a Cartesian coordinate of  $(x_p, y_p, z_p)$  and

height equal to  $h_p$  relative to an ellipsoid, as shown in Figure 3, whose value depends on the knowledge of the slant range distances,  $r_1$  and  $r_2$ , where for a monostatic SAR system, is given by

$$\Delta\phi_{absP_i} = \frac{2\pi}{\lambda}(r_2 - r_1) \quad (15)$$

The slant range distances,  $r_1$  and  $r_2$ , can be found through the Cartesian distance from  $P_i(x_p, y_p, z_p)$  to  $A_1(x_1, y_1, z_1)$  and from  $P_i(x_p, y_p, z_p)$  to  $A_2(x_2, y_2, z_2)$ , respectively, where  $A_1(x_1, y_1, z_1)$  and  $A_2(x_2, y_2, z_2)$  represent the coordinates of the two antenna phase centers, derived from the state vector of the platform,  $(\vec{V}, \vec{S})$ , shown in Figure 3. The corresponding unwrapped phase value of  $P_i(x_p, y_p, z_p)$ ,  $\phi_{unwP_i}$ , in the grid of unwrapped phase  $\phi_{unw_i}$ , can be determined by using the backward geocoding technique [14].

**Figure 3.** Positioning of the point  $P_i$  and the antennas phase centers  $A_1$  and  $A_2$  in Cartesian coordinates.



The phase-offset value of  $P_i(x_p, y_p, z_p)$ , with height  $h_p$ , can be calculated by taking the difference from the absolute phase value calculated by using the slant range difference and the unwrapped phase value at this point, as follows

$$\phi_{offP_i} = \Delta\phi_{absP_i} - \phi_{unwP_i} \quad (16)$$

The phase-offset value found in Equation (16) would be the correct one if the  $P_i$  true height were  $h_p$ , which is the case when it uses the position and height of a corner reflector to calculate the phase-offset value. As the true height of the point  $P_i$  is unknown, a procedure based on function that relates phase-offset to height, applied in a height interval of  $h_{min}$  to  $h_{max}$  (Figure 2), was adopted to estimate the true phase-offset values for both acquisitions, assuming that the true height  $h_i$  of the point  $P_i$  is within  $[h_{min}, h_{max}]$ .

Attributing a height for  $P_i$  from  $h_{min}$  to  $h_{max}$  in  $N$  steps, as shown in Figure 2, and applying the same procedure discussed previously to calculate the phase-offset value for each step, one can create a set of  $N$  phase-offset values for the first acquisition. The same procedure can be applied for the second acquisition, creating another set of phase-offset values related to the same height interval. The two set of phase-offset values calculated for the point  $P_i$  can be represented by functions, the *phase-offset functions (POFs)*, as follows

$$f_{off1}^{P_i} = \Phi_{off1}^{P_i}(h), \quad (17)$$

$$f_{\text{off}2}^{P_i} = \Phi_{\text{off}2}^{P_i}(h), \quad (18)$$

where  $h$  varies from  $h_{\min}$  to  $h_{\max}$  in  $N$  height steps.

Considering that the true height  $h_t$  of the point  $P_i$  is unknown, the phase-offset values cannot be determined from the *POFs*  $f_1^{P_i}$  and  $f_2^{P_i}$ . In order to overcome this problem, the following procedure was used to estimate the phase-offset values of both acquisitions:

- Firstly, as the *POFs* represented by the Equations (17) and (18) are generated within the same height interval,  $[h_{\min}, h_{\max}]$ , one can combine them creating a new function  $g_i$ , the *combined phase-offset function (CPOF)*, which relates the phase-offset values in the space  $\Phi_{\text{off}1} \times \Phi_{\text{off}2}$  for the point  $P_i$ . A *CPOF* can be represented by a function that relates the phase-offset values of both acquisitions, for each height step, through the relation based on the Equation (13), as follows

$$\Phi_{\text{off}1}(h) = \Phi_{\text{off}2}(h) \cdot K_{\theta(h)} + R_{ph(h)}, \quad (19)$$

with

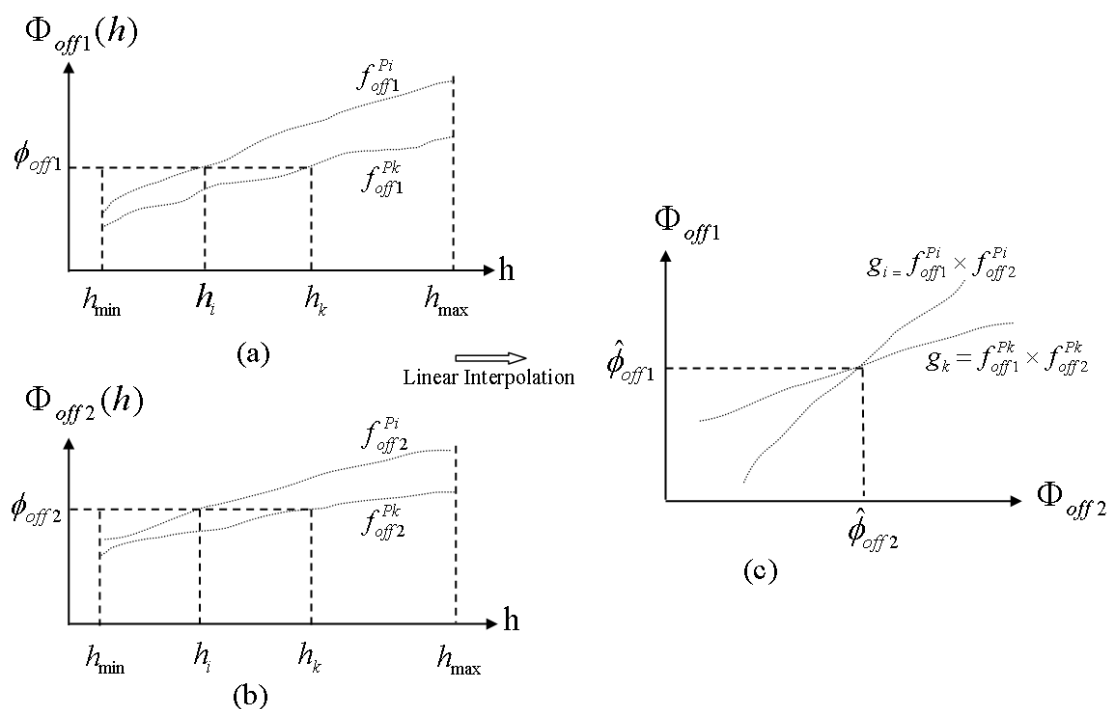
$$K_{\theta(h)} = \cos \theta_{2(h)} / \cos \theta_{1(h)} \quad \text{and} \quad R_{ph(h)} = \phi_{\text{unw}2} K_{\theta(h)} - \phi_{\text{unw}1} \quad (20)$$

The terms  $K_{\theta}$  and  $R_{ph}$  of the Equation (19) can be considered quite constant when computed in a short height interval for the same point  $P_i$ . Based on that, one can suppose without loss of generality, that Equation (19) represents a linear function of  $\Phi_{\text{off}1}^i$  with respect to  $\Phi_{\text{off}2}^i$ , where the term  $K_{\theta}$  represents the angular coefficient and the term  $R_{ph}$  represents the constant value of this linear function. The coefficients  $K_{\theta}$  and  $R_{ph}$  change according to the range position selected for a point in the overlapped area.

- Secondly, considering another point  $P_k$  in the overlapped area, with a different range position from  $P_i$ , another two *POFs*, one for each acquisition, can be created for the point  $P_k$ . These two new functions can be combined, creating another *CPOF*, the  $g_k$ , that relates the phase-offset values of both acquisition in the space  $\Phi_{\text{off}1} \times \Phi_{\text{off}2}$  for the point  $P_k$ .
- Finally, as the *CPOFs*  $g_i$  and  $g_k$  are generated using the same height interval in different range positions, represented in the space  $\Phi_{\text{off}1} \times \Phi_{\text{off}2}$ , they have different angular coefficients, ensuring an intersection point between them, from where the phase-offset values for both acquisitions can be estimated, as illustrated in Figure 4. The coordinates of the intersection point in  $\Phi_{\text{off}1} \times \Phi_{\text{off}2}$ , shown in Figure 4(c), represent the estimate values of the phase-offset for the first acquisition,  $\hat{\phi}_{\text{off}1}$ , and for the second acquisition,  $\hat{\phi}_{\text{off}2}$ .

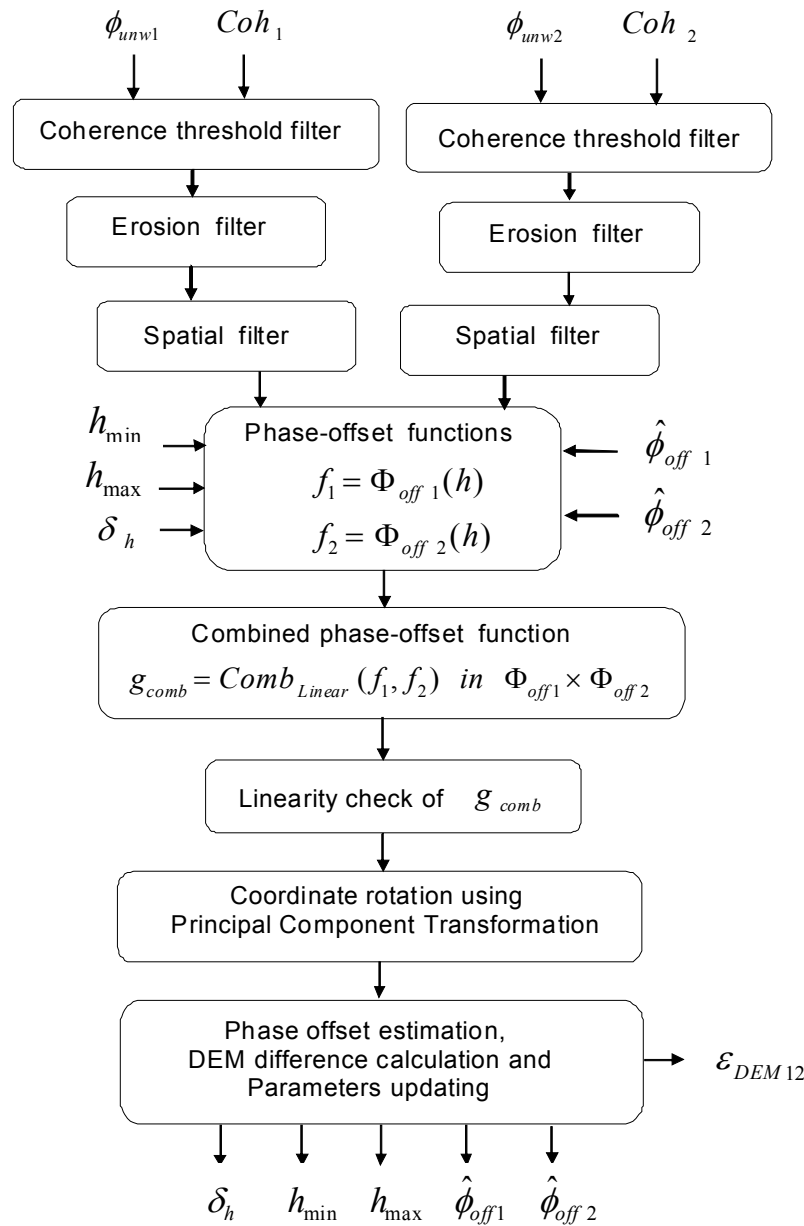
In order to get an accurate estimation of the phase-offset values, instead of two points, a set of points in the overlapped area, with different range positions, can be used to produce a set of *CPOFs* in the space  $\Phi_{\text{off}1} \times \Phi_{\text{off}2}$ , with a common intersection point. Due to noise presence in the interferometric unwrapped phase, or to abrupt variation of the phase, the common point of the intersection is not unique but has a cluster of points, very close together, from where the phase-offset values can be estimated.

**Figure 4.** (a) The illustration of the *POF* (relating phase-offset to height) for the first acquisition in two points,  $P_i$  and  $P_k$ , where  $h_i$  and  $h_k$  represent the true height of these points respectively. (b) The illustration of the *POF* for the second acquisition for the same points. (c) The *CPOFs*  $g_i$  and  $g_k$  in the space  $\Phi_{\text{off } 1} \times \Phi_{\text{off } 2}$  are used to estimate the phase-offset values  $\phi_{\text{off } 1}$  and  $\phi_{\text{off } 2}$  through the intersection point of  $g_i$  and  $g_k$ .



### 3. Processing Sequence

Figure 5 shows the processing sequence used to estimate the phase-offset values of the two overlapped acquisitions. The interferometric unwrapped phase images  $\phi_{\text{unw } 1}$  and  $\phi_{\text{unw } 2}$  are filtered in three steps. Firstly, they are filtered, based on a coherence threshold from  $\text{Coh}_1$  and  $\text{Coh}_2$  images, respectively, to discard points with low coherence—the threshold value is an input parameter which should be chosen according to the characteristics of the terrain and the acquisition; this filter is crucial to improve the accuracy of the estimation. Secondly, a morphological erosion filter [15] is applied on the interferometric unwrapped phases to discard very small regions in order to decrease the disrupting effects during the *POF* generation. Finally, an average filter with window size fixed according to the image resolution is used to reduce phase noise on the interferometric unwrapped phase images. To gain computation time, only boxes around the points of interest are filtered. After the filtering steps, the positions of the set of points in the overlapped area are selected to carry out the generation of the *POFs*.

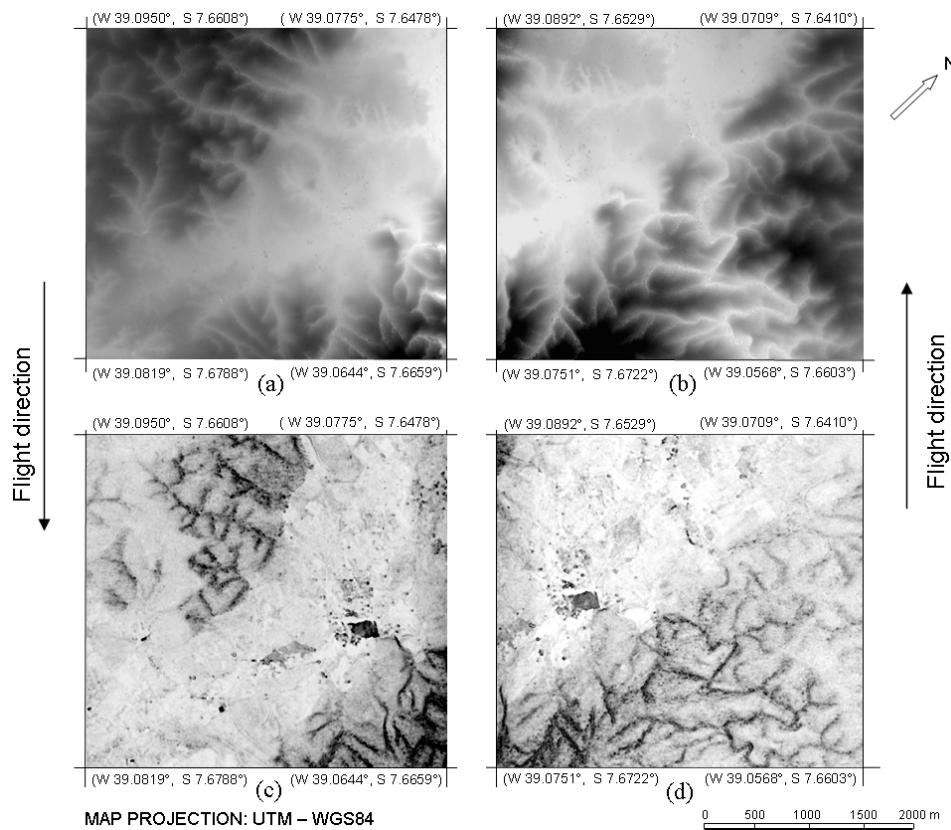
**Figure 5.** Processing sequence for phase-offset estimation.

To illustrate the processing step that generates the *POFs* shown in Figure 5, a processing sequence was performed in a pair of the InSAR data gathered by the OrbiSAR-1 X-band system shown in Figure 6. The generation of the *POFs*  $f_1$  and  $f_2$  for a selected point in the overlapped area, shown in Figure 5, is based on the approach previously described and represented by Equations (17) and (18); in the next step of the processing chain, the *POFs* are combined through a linear combination, creating a *CPOF*  $g_{comb}$  in the space  $\Phi_{off1} \times \Phi_{off2}$ .

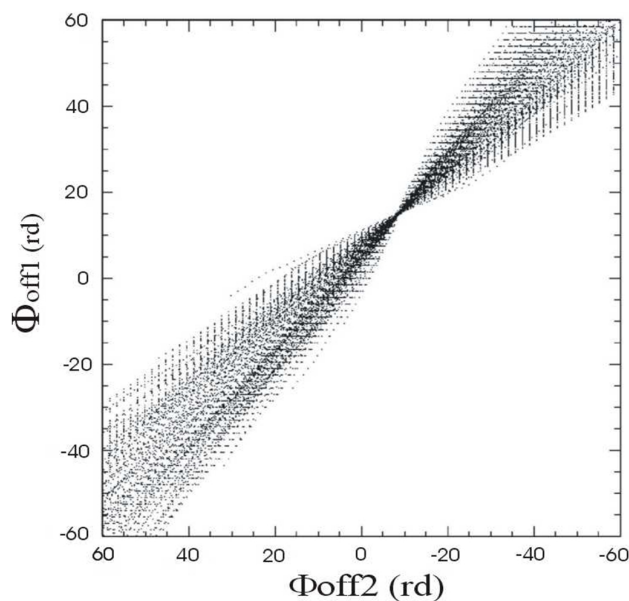
Carrying out the same operations for a set of points in the overlapped area, a set of functions  $g_{comb}$  can be created from where the intersection point can be estimated. Figure 7 shows the set of *CPOF* for 100 points scanned in the overlapped area in a height interval  $[h_{max} - h_{min}]$  equal to 200 m, based on the knowledge of the terrain topography from the SRTM DEM data, and a height step  $\delta_h$  equal to 2 m.



**Figure 6.** OrbiSAR-1 X-band InSAR data; (a) unwrapped phase grid and (c) coherence image of the first acquisition; (b) unwrapped phase grid and (d) coherence image of the second acquisition.



**Figure 7.** Example of the *combined phase-offset functions (CPOFs)* of the two acquisitions.



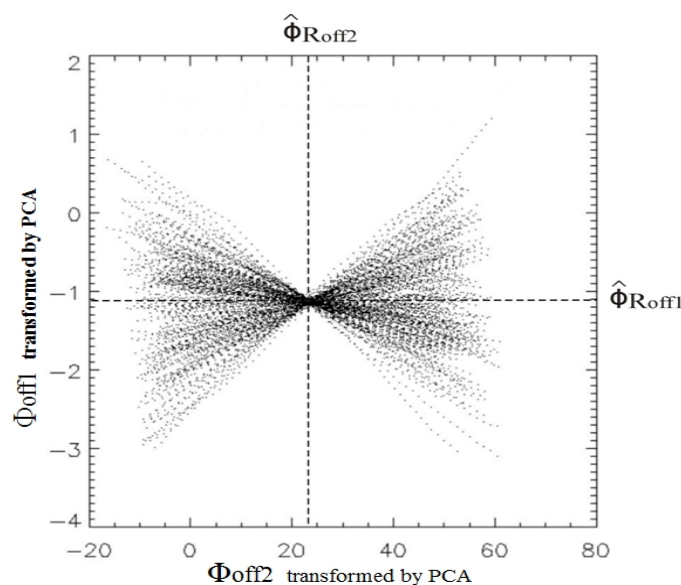
The *CPOFs* have a linear behavior close to the intersection point. However, disturbing effects related to noise, terrain irregularities and the presence of range waves [16], among others, can make the offset-functions have a non-linear behavior. To avoid the use of the disrupted functions, a filter based on the linearity of the function  $g_{\text{comb}}$  (Figure 5) was introduced. This filter performs a linear

approximation of the curves and uses the chi-square goodness of fit statistics [17] to decide which ones will be used for the estimation and which ones will be discarded.

In order to make it easier to determine the intersection point of the *CPOFs*, the *CPOFs* are rotated using the Principal Components Analysis (PCA) [18], which is a mathematical procedure that uses an orthogonal transformation to convert a set of observations of possibly correlated variables, in this case the set of *CPOFs*  $g_{comb}$ , into a set of values of uncorrelated variables called Principal Components.

Figure 8 shows the *CPOFs* transformed by PCA. We can notice that PCA uncorrelates the functions, causing a spread and rotation of the  $g_{comb}$  functions, allowing an easy determination of the crossing point by finding the minimum dispersion value of these transformed functions on the horizontal axis, from where the transformed phase-offset values can be determined. Finally, the transformed phase-offset values are transformed back using the Principal Components Coefficients, providing an estimation of the phase-offset values for both acquisitions,  $\hat{\phi}_{off1}$  and  $\hat{\phi}_{off2}$ . From these estimated phase-offset values, the absolute interferometric phase for both acquisitions can be determined by using the Equation (1).

**Figure 8.** Example of the *CPOFs* transformed by PCA.

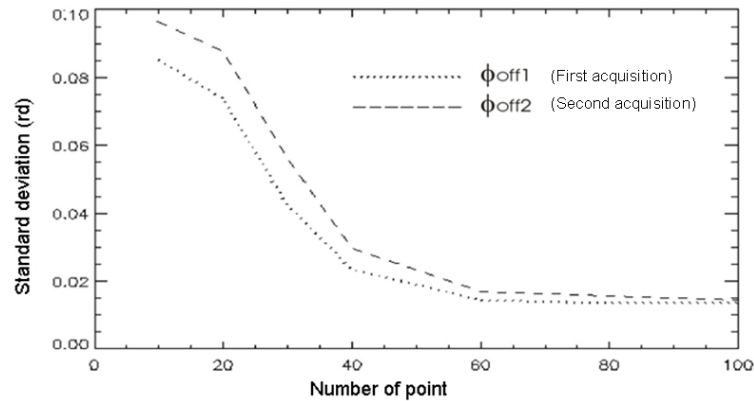


This method works basically in two iterations. Firstly, the coarse phase-offsets values are estimated using a height interval  $[h_{max} - h_{min}]$  and a height step  $\delta_h$ , according to the knowledge of the terrain mean height from the SRTM DEM data. Secondly, the coarse phase-offsets estimated values,  $\hat{\phi}_{off1}$  and  $\hat{\phi}_{off2}$  (Figure 5) are used to decrease the height interval and the height step for the second iteration to allow a fine estimation. In some cases, a third iteration can be tried to improve the estimation. For each iteration the accuracy of the phase-offset values can be evaluated through the root mean square error between the DEMs in the overlapped area,  $\varepsilon_{DEM12}$ , of both acquisitions (Figure 5), which should be very small when the phase-offset values are well estimated.

An important issue regarding the accuracy of the phase-offset estimation using the proposed method, is the number of points selected in the overlapped area used to build up the *POFs*. A statistical simulation using points randomly distributed in the overlapped area showed that the phase-offset values become stable after 60 points, as shown in Figure 9. This simulation was performed using a pair

of unwrapped interferograms shown in Figure 6, whose area is characterized by hills and vegetation, presenting a diversity of coherence values.

**Figure 9.** Standard deviation of the phase-offset values *versus* number of points used.



The performance of the proposed method regarding the size of the overlapped area in range direction was checked by changing the overlap percentage in a range direction, varying from 20% to 90% of the swath width. For each fixed percentage, the algorithm was executed ten times. For each execution, the points used by the algorithm were randomly distributed in the overlapped area within a fixed range. The phase-offset mean values and standard deviations for the X-band of the first acquisition for each fixed percentage used are shown in Table 1.

**Table 1.** Performance regarding the percentage of the area used in range direction.

Phase-offset	Percentage of Overlapped the Area in Range Direction							
	20	30	40	50	60	70	80	90
Mean value [rd]	1.05	0.97	0.98	0.99	0.99	0.97	0.99	1.00
Std. dev. [rd]	0.06	0.04	0.03	0.03	0.03	0.03	0.02	0.05

It can be noted from Table 1 that the performance of the method regarding the percentage used is quite robust; percentages lower than 40% and higher than 80% present a slightly larger standard deviation. We noticed that for percentages less than 30%, the incident angle diversity is low, generating the intersection of noisy *CPOFs*. For percentage greater than 80% the disrupting effects in the *POFs* were more pronounced due to the presence of residual undulations in far range regions of the interferograms, caused by the receiving of delayed signal components from multiple reflections [16], thus decreasing the accuracy of the estimation. The flight configuration should be planned to ensure that the overlapped area in range direction is within the percentage interval of 40% to 80%, corresponding to an incidence angle difference between the two acquisitions of 9 to 21 degrees, ensuring an incidence angle diversity to give the necessary angular coefficient to the *POFs*, allowing an easier determination of the crossing point for the estimates of the phase-offset values.

#### 4. Results and Discussion

The presented method validation was carried out in a test site area in the south-west of Brazil, Cachoeira Paulista, São Paulo state, using data from the OrbiSAR-1 system in X- and P-bands, with

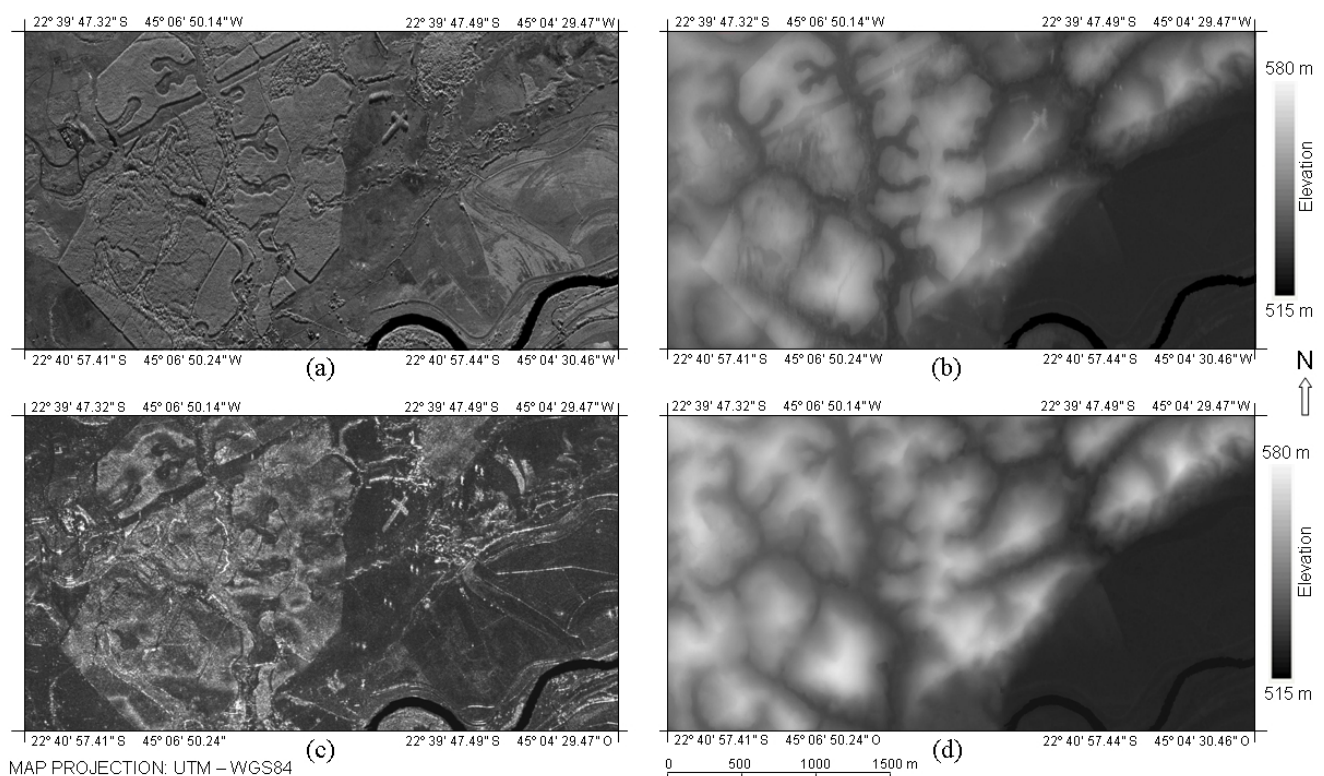
the parameters shown in Table 2. Four corner reflectors were deployed to the test site area to provide an accurate phase-offset estimation, which was used as a reference.

**Table 2.** OrbiSAR-1 System-flight parameters.

Parameter	Band	
	X	P
Wavelength ( $\lambda$ ) [m]	0.031228	0.713791
Flight altitude (H) [Km]	5.6	5.6
Incident angle ( $\theta$ )—mid swath [deg]	50	50
Normal Baseline ( $B_n$ )—mid swath [m]	2.16	35.3
Swath width [Km]	7.0	7.0
Chirp bandwidth [MHz]	200	50
DEM spatial resolution [m]	2.0	2.0

To evaluate the performance of the presented method, firstly, the corner reflectors were used to estimate the phase-offset values, followed by the absolute phase determination and the DEM generation for X- and P-bands. The same procedure was performed using the proposed method to estimate the phase-offset values, considering an overlapped area of approximately 60% of the swath width and a coherence threshold of 0.6 for X-band and 0.5 for P band. About 80 points randomly distributed in the overlapped area were used to build up the *POFs* in this estimation. The DEMs and geocoded images were generated with a spatial resolution of 2 m. Figure 10 shows part of the geocoded images and DEMs of X-band and P-band, generated by using the phase-offset values estimated with the proposed method.

**Figure 10.** OrbiSAR-1 data: (a) Geocoded X-band image, (b) X-band DEM, (c) Geocoded P-band image, (d) P-band DEM.



The quality of the results regarding the estimate of the phase-offset values, the first based on corner reflectors at the scene and the second based on the proposed method, are presented in Table 3, showing that both methodologies provide quite close results. In this analysis, the phase errors induced by the temporal, baseline and volume decorrelation were not considered, since the contribution of these phase errors was embedded on the grid of unwrapped phase used in both methods.

**Table 3.** Phase-offset error between the two phase-offset estimation methods.

Statistics	Phase-Offset Value Difference (Corner Reflector–Proposed Method)	
	X-band	P-band
Mean difference [rd]	0.047	0.051
Std. dev. [rd]	0.0152	0.0191

The X-band and P-band DEMs generated with both phase-offset estimation methods were evaluated in 16 GCPs measured with GPS survey: the results are shown in Table 4. The results in terms of mean and standard deviation are quite similar for both bands and methods used, showing that the proposed method for phase-offset estimation is a reliable automatic tool for generating accurate DEMs based on SAR interferometry.

**Table 4.** DEM error in relation to 16 GCPs in the test site area measured with GPS survey.

Statistics Using 16 GCPs	Phase-Offset Estimation			
	Corner Reflectors		Proposed Method	
	X-Band DEM Difference	P-Band DEM Difference	X-Band DEM Difference	P-Band DEM Difference
Mean: $\mu_h$ [m]	1.1127	0.7641	1.1378	0.8265
Std. dev.: $\sigma_h$ [m]	1.4720	0.6999	1.4709	0.7094

The results shown in Table 4 reinforce the results presented in Table 3, where quite similar phase-offset values found with the two methods collaborate to generate quite similar DEMs. It can be noted from Table 4 that despite the fact that corner reflectors can provide the best phase-offset estimation, the DEMs from X- and P-band present errors when compared to GCPs. That could be explained from phase error mentioned before, which is not evaluated in the present work. In Table 4 we also notice that the mean difference and the standard deviation regarding the 16 GCPs for X-band are greater than those for P-band; this can be explained by the fact that the DEM generation process is more affected in vegetated areas, which is more pronounced for X-band data due to its low penetration into the vegetation.

#### 4.1. Error Analysis

The height derived from the interferometric phase is very sensitive to phase errors. According to [19], the height error is related to phase error by:

$$\sigma_h^\theta(m) = \frac{\lambda}{4\pi B_n} r \sin \theta \sigma_{\phi_u} \quad (21)$$

where  $\sigma_{\phi_u}$  is the phase uncertainty,  $B_n$  is the normal baseline,  $\theta$  the incident angle,  $r$  the slant range distance and  $\lambda$  the wavelength.

The standard phase error and the phase uncertainty with 95% of confidence level, according to [17], are given respectively by:

$$\sigma_{\phi_e}(rd) = \sigma_{\phi} / \sqrt{N} \quad (22)$$

and

$$\sigma_{\phi_u}(rd) = \mu_{\phi} \pm 2.0 \times \sigma_{\phi_e} \quad (23)$$

where  $\sigma_{\phi}$  is the standard deviation of the interferometric phase,  $N$  is the number of measurement and  $\mu_{\phi}$  is the mean phase error.

Table 5 shows the height error regarding the phase-offset estimation difference between the two methods, with corner reflectors and with the presented method, shown in Table 3, considering that the estimation using the previous method leads to the best estimation. Taking into account only the phase-offset estimation error of this proposed method, leads to a height uncertainty of around 0.5 m for X-band and 1.1 m for P-band, with a 95% confidence level, as shown in the last row of Table 5 for the test carried out in Cachoeira Paulista.

**Table 5.** Statistics regarding the phase-offset estimation error of the proposed method for X- and P-band.

Parameters and Statistics	Band	
	X	P
Wavelength: ( $\lambda$ ) [m]	0.0313918	0.713791
Measurement (GCPs) : (N)	16	16
Mean phase error : $\mu_{\phi}$ [rd]	0.0470	0.0510
Phase Std. dev. $\sigma_{\phi}$ [rd]	0.0152	0.0191
Phase uncertainty (95%): $\text{Max}( \sigma_{\phi_u} )$ [rd]	0.0508	0.0558
Mean height error: $\mu_h$ [m]	0.327	0.702
Height Std. dev. $\sigma_h$ [m]	0.059	0.203
Height uncertainty (95%): $\text{Max}( \sigma_{hu} )$ [m]	0.445	1.108

#### 4.2. Test Result without Using Corner Reflectors

The advantage of not using corner reflectors (GCPs) to estimate the phase-offset values on forested areas is tremendous. Dispensing the reflectors can lead not only to lower costs but it can also diminish the environmental impact associated with corner reflector deployment. In certain regions, like the dense Amazon forest or in fluvial regions, access to appropriate areas to deploy the reflectors can be difficult. Based on that, a test was performed in the Amazon rainforest area characterized by quite flat relief, without the use of corner reflectors. Several tracks were flown so that they crossed each other to compute the DEM difference in the intersection areas. The data were acquired with the same characteristics shown in Table 2. The phase-offset values were estimated using an overlapped area of approximately 50% of the swath width, where about 100 points randomly distributed in this overlapped area were used to build up the *POFs* for the phase-offset estimations. The coherence threshold used to select points was 0.6 for X-band and 0.5 for P-band. The DEM of X-band and P-band



were generated with a spatial resolution of 2.5 m. The goal of this test was to verify if the phase-offset values would be well estimated for each track, enabling the generation of quite similar DEMs on the intersection areas. Figure 11 shows the X-band DEMs of the tracks in color scale.

**Figure 11.** DEMs of OrbiSAR-1 X-band data for all tracks generated through the use of the proposed method for phase-offset estimation in the Amazon test site.

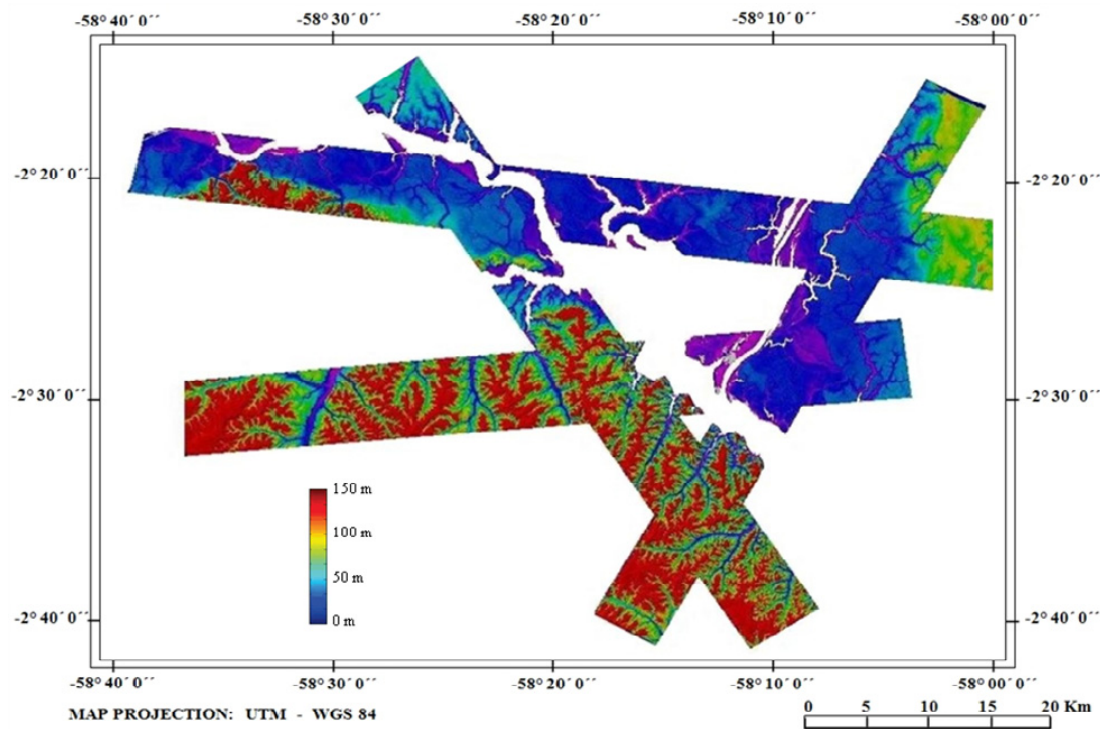


Table 6 shows the computed statistics between the DEMs for X-band and P-band in the intersection areas of all tracks. It can be noted from Table 6 that the mean value differences are small for both bands, while the standard deviations have significant values, caused mainly by the high variation in the DEMs due to the forest structure, aggravated by the different looking angles in the intersection areas; this is more pronounced for X-band due to its low penetration into the forest, which makes it more susceptible to canopy variation. The standard deviations of the slope in range and azimuth directions were quite small for both bands. The estimates of height uncertainty at the 95% confidence level were around 3 m for both bands. In this computed statistics, all phase errors that contribute to lower the accuracy of DEMs were taken into account.

**Table 6.** Computed statistics between the DEMs in the intersection areas of all tracks.

Computed Statistics between the DEMs	DEM	
	X-Band	P-Band
Mean value of the difference: $\mu_{DEM}$ [m]	0.520	0.640
Std. dev. of the difference: $\sigma_{DEM}$ [m]	3.170	2.520
Std. dev. of the range slope: $\sigma_{rg}$ [m]	0.003	0.360
Std. dev. of the azimuth slope: $\sigma_{az}$ [m]	0.008	0.310
Height standard error: $\sigma_{he}$ [m]	1.124	1.127
Height uncertainty (95%): $\text{Max}( \sigma_{hu} )$ [m]	2.768	2.904

## 5. Conclusions

The method for phase-offset estimation, based on phase-offset functions presented in this work, has good potential for operational application, as it does not require the presence of GCP or *a priori* information, and at the same time is able to provide the accuracy requested for DEM generation.

The results presented in Table 3 and Table 4 using OrbiSAR-1 data show that the estimation of the phase-offset values generated quite similar results to those produced through the use of the corner reflectors, for X-band and P-band, indicating that the phase-offset estimation can be automatically done, leading to a lower cost and a faster estimation. Taking into account only the phase-offset estimation error, shown in Table 3, the height uncertainty regarding this error, shown in Table 5, indicates that the generation of X-band and P-band DEMs could be carried out in the scale of up to 1:5,000 m, according to [20].

The potential for mapping rainforest area was checked and the results are presented in Table 6, indicating that the proposed method can provide reliable phase-offset estimation to generate X-band and P-band DEMs in the scale of up to 1:12,000 m, with a vertical accuracy at the 95% confidence level equal to 2.768 m for X-band and 2.904 m for P-band.

The results presented in Tables 5 and 6 show that P-band has a somewhat larger height uncertainty than X-band, caused probably by the different scatter center positions of the pixels for the two acquisitions, since the penetration of the microwaves in the vegetation changes according to the incidence angle, which is more pronounced for P-band, increasing the error in estimating the phase-offset values.

## Acknowledgement

The authors are grateful to Antonio Miguel Vieira Monteiro, Fabio Furlan Gama and Leonardo Sant'Anna Bins from INPE, for their fruitful suggestions. The authors would also like to express special thanks to the reviewers whose comments improved the quality of the manuscript.

## References

1. Graham, L.C. Synthetic interferometer radar for topographic mapping. *Proc. IEEE* **1974**, *62*, 763-768.
2. Zebker, H.A.; Goldstein, R.M. Topographic mapping from interferometric synthetic aperture radar observations. *J. Geophys. Res.* **1986**, *91*, 4993-4999.
3. Hagberg, J.O.; Ulander, L.M.H. On the optimization of interferometric SAR for topographic mapping. *IEEE Trans. Geosci. Remote Sens.* **1993**, *31*, 303-306.
4. Rosen, P.A.; Hensley, S.; Joughin, I.R.; Li, F.K.; Madsen, S.N.; Rodriguez, E.; Goldstein, R.M. Synthetic Aperture Radar Interferometry. *Proc. IEEE* **2000**, *88*, 333-382.
5. Goldstein, R.M.; Zebker, H.; Werner, C.L. Satellite radar interferometry: Two-dimensional phase unwrapping. *Radio Sci.* **1988**, *23*, 713-720.
6. Ghiglia, D.C.; Romero, L.A. Robust two-dimensional weighted and unweighted phase unwrapping that uses fast transforms and iterative methods. *J. Opt. Soc. Am.* **1994**, *11*, 107-117.



7. Fornaro, G.; Franceschetti, G.; Lanari, R. Interferometric SAR phase unwrapping using Green's formulation. *IEEE Trans. Geosci. Remote Sens.* **1996**, *34*, 720-727.
8. Pritt, M.D. Phase unwrapping by means of multigrid techniques for interferometric SAR. *IEEE Trans. Geosci. Remote Sens.* **1996**, *34*, 728-738.
9. Madsen, S.N. Absolute phase determination techniques in SAR interferometry. *Proc. SPIE* **1995**, *2487*, 393-401.
10. Scheiber, R.; Fischer, J. Absolute Phase Offset in SAR Interferometry: Estimation by Spectral Diversity and Integration into Processing. In *Proceedings of EUSAR*, Ulm, Germany, 25–27 May 2004.
11. Brcic, R.; Eineder, M.; Bamler, R. Absolute Phase Estimation from TerraSAR-X Acquisitions using Wideband Interferometry. In *Proceedings of IEEE Radar Conference*, Pasadena, CA, USA, 4–8 May 2009.
12. Eineder, M.; Adam, N. A maximum likelihood estimator to simultaneously unwrap, geocode and fuse SAR interferograms from different viewing geometries into one digital elevation model. *IEEE Trans. Geosci. Remote Sens.* **2005**, *43*, 24-36.
13. Fornaro, G.; Sansosti, E.; Lanari, R.; Tesauro, M. Role of processing geometry in SAR raw data focusing. *IEEE Trans. Aerosp. Electron. Syst.* **2002**, *38*, 441-454.
14. Schreier, G. Standard Geocoded Ellipsoid Corrected Images. In *SAR Geocoding: Data and Systems*; Chapter 6; Wichmann Verlag: Kalsruhe, Germany, 1993; pp. 159-163.
15. Maragos, P. Morphological Filtering for Image Enhancement and Feature Detection. In *Handbook of Image and Video Processing*, 2nd ed.; Bovik, A.C., Ed.; Academic Press: New York, NY, USA, 2005; pp. 135-156.
16. Pinheiro, M.; Rosa, R.; Moreira, J.R. Multi-Path Correction Model for Multi-Channel Airborne SAR. In *Proceedings of 2009 IEEE International Geoscience & Remote Sensing Symposium (IGARSS'09)*, Cape Town, South Africa, 12–19 June 2009; Volume 3, pp. 729-732.
17. Taylor, J.R. *An Introduction to Error Analysis: The Study of Uncertainties in Physical Measurements*, 2nd ed.; University Science Books: Sausalito, CA, USA, 1997.
18. Richards, J.A.; Jia, X.P. Multispectral Transformation of Image Data. In *Remote Sensing Digital Image Analysis*, 2nd ed.; Springer-Verlag: Berlin, Germany, 1993; pp.137-163.
19. Rodriguez, E.; Martin, J.M. Theory and design of interferometric synthetic aperture radar. *IEE Proc.-F* **1992**, *139*, 147-159.
20. Greenwalt, C.R.; Schultz, M.E. *Principles and Error Theory and Cartographic Applications*; ACIC Technical Report No 96; Aeronautical Chart and Information Center: St. Louis, MO, USA, 1968.