

Accelerated Decrease in Rice Cropping Intensity in Southern China over the Past Two Decades

Supplementary Materials include three figures and one table, as follows:

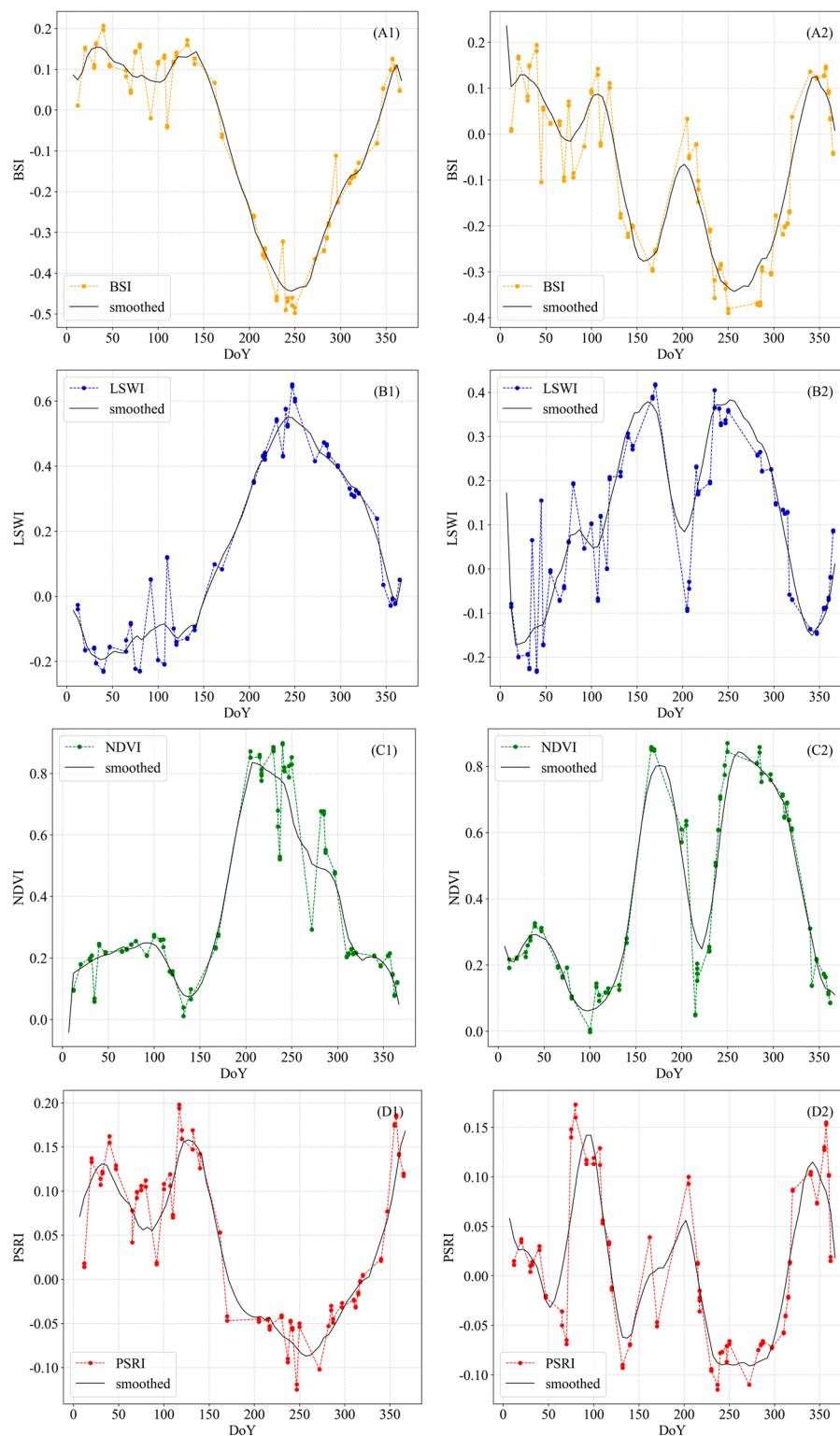


Figure S1. Temporal profiles of the spectral indices, D1 and D2 denote single-season rice and double-season rice, respectively

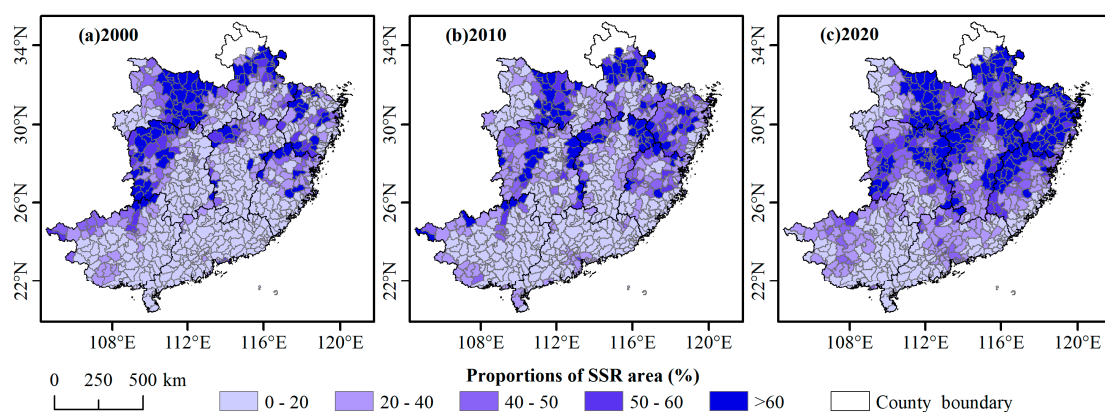


Figure S2. Spatial pattern of the proportion of single-season rice at the county level in Southern China during 2000-2020.

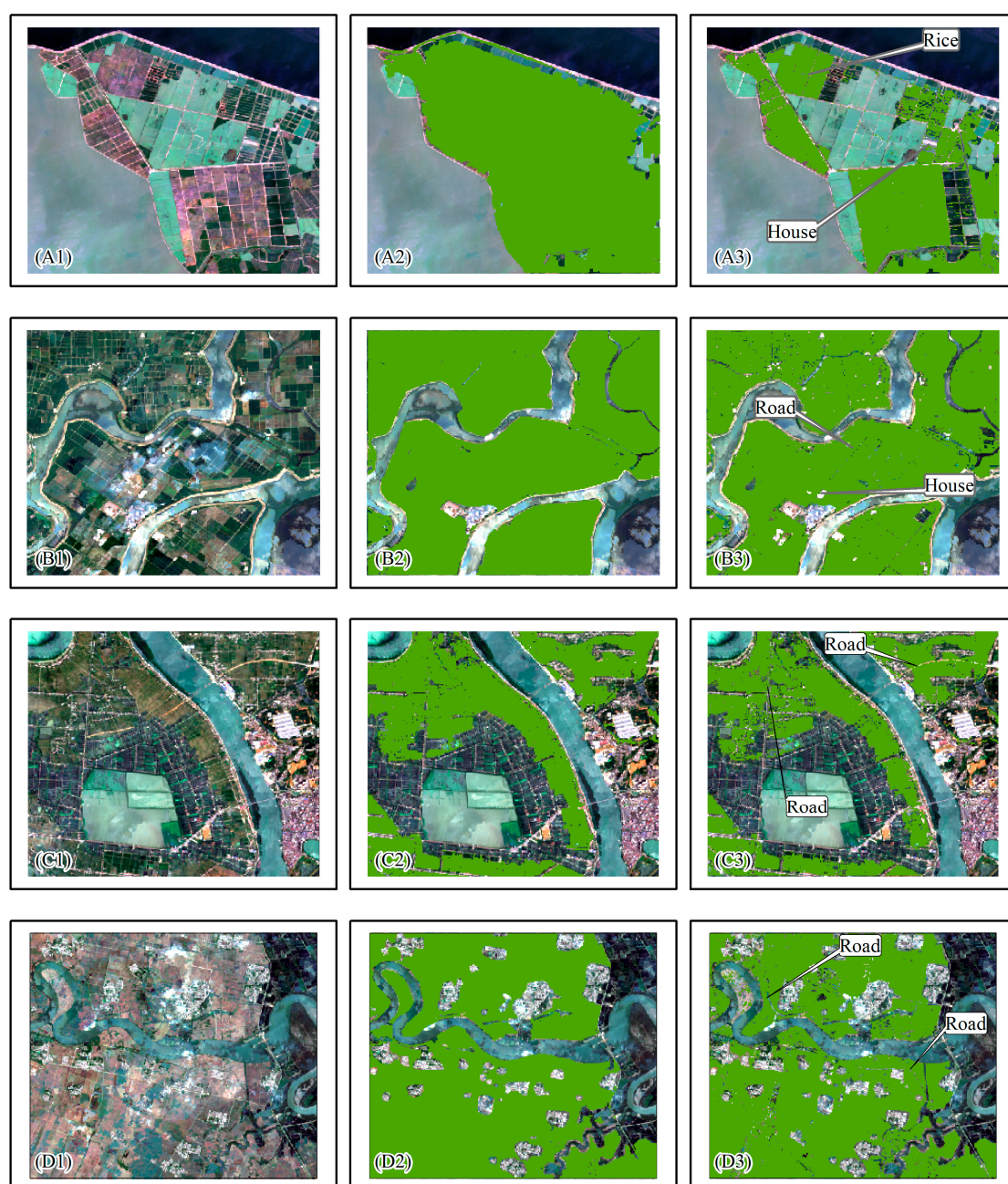


Figure S3. Comparison between our new rice paddies maps with cropland from GlobeLand30. (A-D) denote the areas in Yugan County in Jiangxi Province, Xinjian County in Jiangxi Province, Jiuluo County in Hunan Province, and Leizhou County in Guangdong Province, respectively. (1-3) represent the original Sentinel-2 imagery on July 12, 2020, the cropland from GlobeLand30, and the new rice paddies maps respectively.