

# SUPPORTING INFORMATION FOR

## Performance of Common Scene Stacking Atmospheric Correction on nonlinear InSAR Deformation Retrieval

*Zhichao Zhang<sup>1,2</sup>, Wanpeng Feng<sup>1,2,3#</sup>, Xiaohua Xu<sup>4,5</sup>, Sergey Samsonov<sup>6</sup>*

*1 School of Earth Sciences and Engineering, Sun Yat-sen University (Zhuhai), Zhuhai 519000, China;*

*2 Southern Marine Science and Engineering Guangdong Laboratory (Zhuhai), Zhuhai 519000, China;*

*3. State Key Laboratory of Earthquake Dynamics, Institute of Geology, China Earthquake Administration, Beijing 100029, China*

*4. University of Science and Technology of China, Hefei, China*

*5. Mengcheng National Geophysical Observatory, University of Science and Technology of China, Hefei 230026, China*

*6. Canada Centre for Mapping and Earth Observation, Natural Resources Canada, Ottawa ON K1A0E4, Canada*

### CONTENTS OF THIS FILE:

Figure S1-S3

### *Introduction*

This supplementary file contains 3 figures that are result in the main document. Figures S1 and S2 show the simulated interferograms with 20mm of random noise added that include linear deformation and coseismic deformation, respectively. Figure S3 is the  $\tau$  value result from inversion.

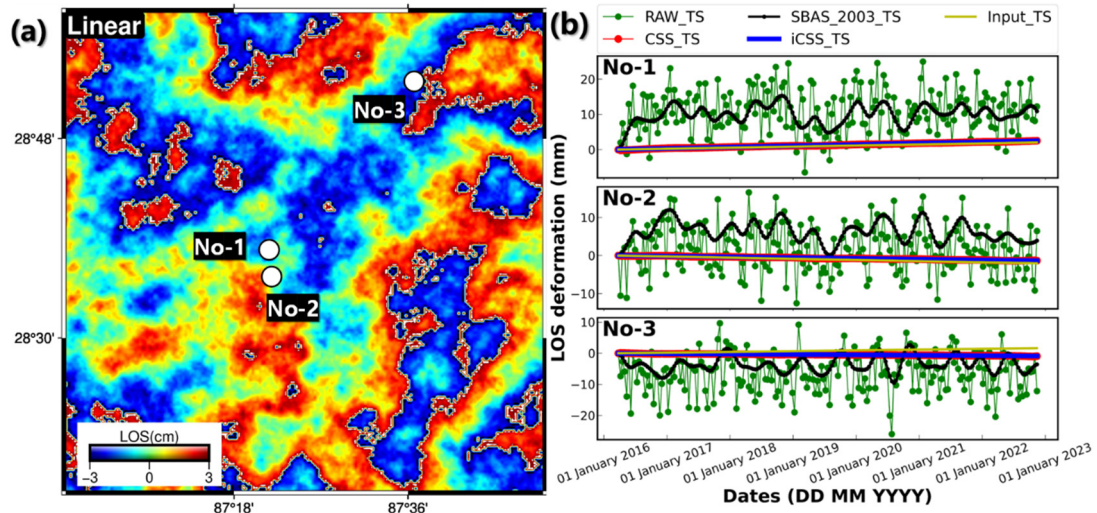


Figure S1. (a) An accumulated simulated interferogram of 9 February 2020-6 March 2022 with 20 mm of random noise added that includes linear deformation, where dots (white) are reference stations for time series analysis. (b) give deformation sequences obtained from inversion at the three reference stations, respectively. The diagrams show simulated theoretical deformation sequence (yellow lines), input deformation sequence (green lines), deformation sequence after traditional CSS (red lines), deformation sequence after ICSS (blue lines), and deformation sequence after SBAS2003 (black lines).

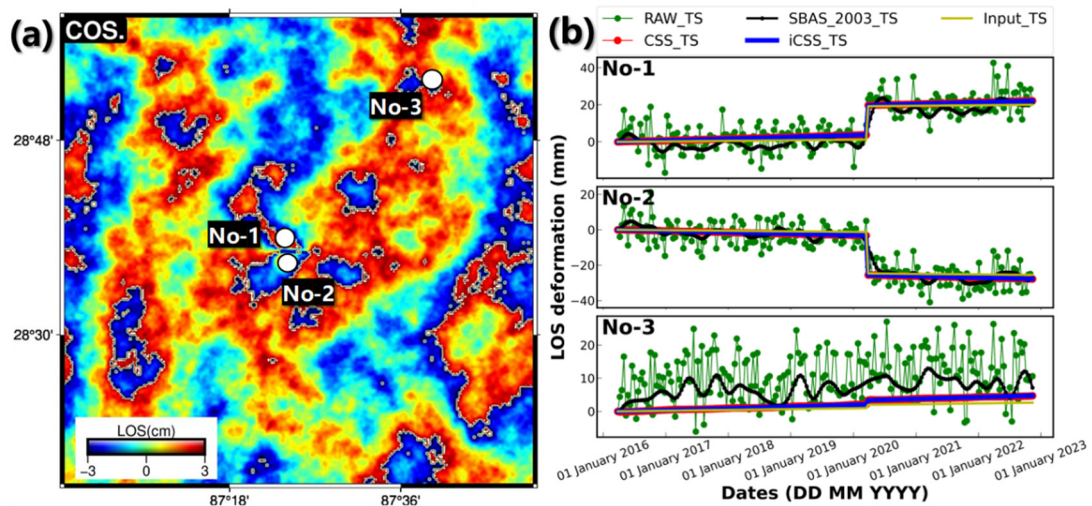


Figure S2. An accumulated simulated interferogram of 9 February 2020-9 March 2022 with 20 mm of random noise added that includes coseismic deformation, the symbols are same as those in Figure S1.

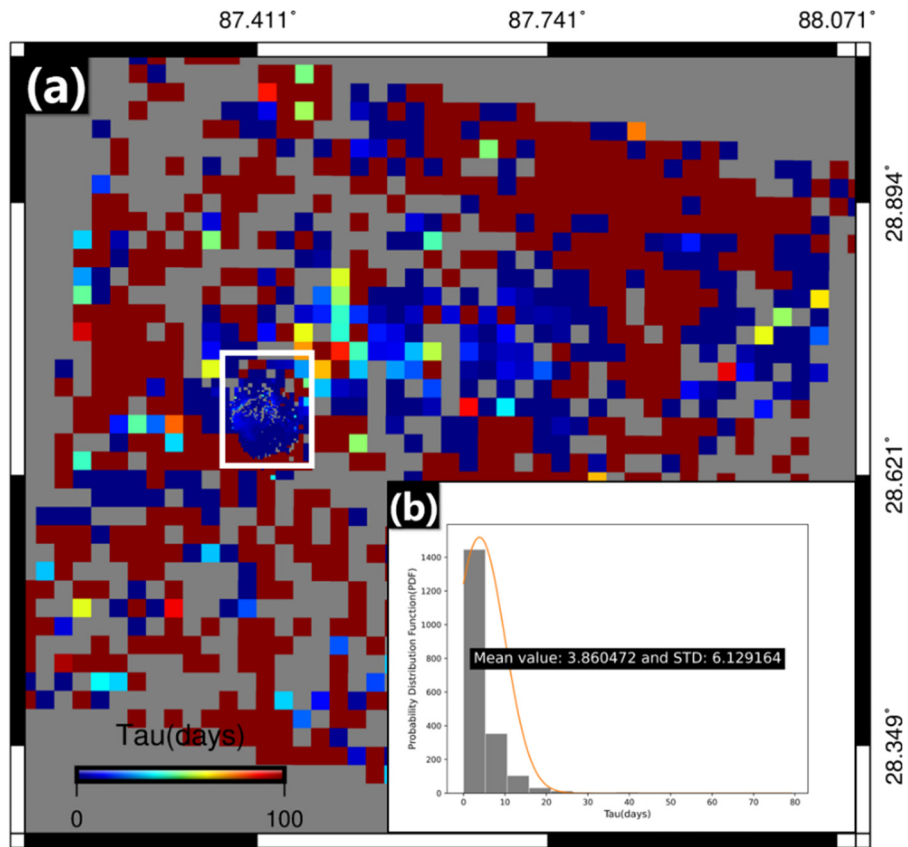


Figure S3. (a) The  $\tau$  value result from inversion. (b) Histogram of selected points within deformation region (white box) with  $\tau$  values less than 100.