

## Supplementary

**Table S1. Annual pre-monsoon AOD level percentage change of 43 urban agglomerations and 13 industrial districts**

UAs and IDs	2010-2011	2011-2012	2012-2013	2013-2014	2014-2015	2015-2016	2016-2017	2017-2018	2018-2019	2019-2020
Kolkata	-2.43	0.00	5.29	-21.86	39.89	-1.08	-7.79	33.19	-8.79	-5.61
Asansol	-10.56	-0.72	5.34	-23.04	72.46	-9.90	2.89	-0.56	-15.63	1.56
Dhanbad	-10.56	-0.72	5.34	-23.04	72.46	-9.90	2.89	-0.56	-15.63	1.56
Ranchi	-4.44	-11.30	6.74	-16.14	62.34	-16.49	9.57	18.59	-28.74	17.00
Jamshedpur	-6.21	-0.71	1.67	-9.37	32.30	15.82	-20.40	13.77	-11.92	-5.92
Patna	6.77	-13.33	12.76	-32.45	55.17	19.84	-3.44	19.75	-29.21	-10.84
Lucknow	-7.56	0.60	-9.92	-14.10	16.67	27.47	-8.10	13.51	-25.79	-4.01
Kanpur	-14.19	4.04	-16.08	-14.10	16.67	35.60	-13.61	16.51	-27.70	1.34
Allahabad	-10.84	-1.35	-16.63	-11.97	12.27	42.28	-19.37	31.26	-29.34	3.35
Varanasi	-5.41	0.18	-13.55	-5.77	9.41	23.40	-8.10	25.57	-30.62	0.81
Meerut	-9.71	-1.08	-4.89	-6.10	7.51	15.09	-14.43	18.77	-15.65	-7.84
Ghaziabad	-9.71	-1.08	-4.89	-6.10	7.51	15.09	-14.43	18.77	-15.65	-7.84
Agra	-11.09	25.32	-21.50	-66.18	49.46	15.27	-9.78	156.64	-55.04	43.94
Delhi	-9.71	-1.08	-4.89	-6.10	7.51	15.09	-14.43	18.77	-15.65	-7.84
Chandigarh	-20.24	18.22	-12.66	-16.60	21.16	18.30	-12.13	21.80	-40.07	0.82
Amritsar	-3.89	18.62	-13.14	-19.06	36.41	-13.35	6.16	4.64	-22.00	-9.48
Jodhpur	-50.57	53.70	-40.66	3.55	51.96	-13.23	-13.38	29.18	-23.59	-40.43
Gwalior	-25.16	9.52	-12.53	-31.87	82.40	9.18	-18.97	35.64	-35.29	-14.55
Bhopal	8.66	1.66	-17.97	-18.33	27.32	4.60	-15.75	59.13	-38.25	3.10
Indore	13.47	11.15	-17.15	-16.02	22.33	1.14	-7.89	36.73	-38.81	32.68
Jabalpur	-0.44	-4.41	18.89	-20.54	51.71	-23.15	-1.67	58.30	-43.82	36.36
Ahmedabad	-5.48	16.23	-14.71	-5.56	26.93	-19.27	-1.21	27.52	-14.63	-19.10
Surat	10.60	-1.55	-8.95	19.94	-8.43	13.16	-20.47	23.98	-12.50	-20.49
Vadodara	1.66	14.71	-17.66	-8.65	34.09	-15.25	-6.33	29.54	-17.86	-21.07

Rajkot	-11.21	33.33	-8.68	-16.14	28.87	-14.93	3.45	14.55	-8.99	-22.67
Mumbai	8.87	26.38	-5.67	-46.72	63.59	29.78	-37.68	26.36	-24.85	26.53
Pune	-2.87	-5.01	1.86	3.96	7.62	-8.99	0.90	12.17	-24.60	0.35
Nasik	-1.02	0.00	2.31	-8.54	9.89	-2.75	2.83	4.00	-16.35	-3.45
Raipur	19.62	-2.91	10.08	7.92	-1.83	10.98	-24.42	59.33	-18.01	5.76
Durg-Bhilainagar	19.62	-25.13	38.16	-4.86	15.05	10.98	-27.58	68.90	-28.74	19.81
Hyderabad	-1.35	-18.84	47.26	21.78	-15.53	-21.17	2.12	64.36	-43.37	32.71
Vijayawada	-9.38	1.17	3.47	8.21	-28.10	19.66	23.45	13.96	-16.67	-17.61
Bangalore	5.92	10.86	3.56	-21.78	28.94	-15.34	26.85	7.67	-16.22	-3.81
Chennai	9.80	23.11	-0.19	-28.12	15.54	-16.37	33.24	0.20	-14.46	-14.79
Coimbatore	11.48	6.37	-12.21	-1.31	18.35	-20.22	23.94	12.73	-23.39	13.42
Madurai	-4.47	44.16	-7.75	-1.37	-5.54	-13.84	38.69	1.40	-10.90	-1.75
Kannur	4.84	10.00	9.09	-6.41	12.56	-7.91	-3.74	4.81	-16.59	10.21
Kozhikode	4.84	10.00	9.09	-6.41	12.56	-7.91	-3.74	4.81	-16.59	10.21
Kollam	2.35	30.37	-12.53	-16.08	-24.85	29.48	-5.54	42.02	-20.87	6.67
Thiruvananthapuram	3.88	30.75	-20.88	-7.22	-24.85	26.29	-3.15	42.02	-15.60	-20.65
Thrissur	16.67	16.26	-14.56	-5.97	7.76	-4.59	7.55	-2.98	-0.44	-6.17
Kochi	7.74	10.22	-0.25	-22.36	8.41	12.54	14.85	-9.47	-7.40	-3.03
Malappuram	16.67	16.26	-14.56	-5.97	7.76	-4.59	7.55	-2.98	-0.44	-6.17
Jalpaiguri	-23.77	25.73	-8.36	2.89	-14.92	39.81	-24.89	19.41	31.15	-44.29
Purnia	-5.04	0.55	19.95	-21.44	-12.30	46.28	-14.00	15.96	-5.83	-17.91
Gorakhpur	-1.42	4.33	8.18	-25.89	2.01	72.37	-20.16	15.51	-12.19	-39.73
Cuttak	-20.47	17.88	17.13	-2.34	12.65	-3.16	-4.78	16.78	-12.50	-14.05
Lucknow	-14.18	4.10	-16.06	-14.22	16.67	35.75	-13.71	16.64	-27.72	1.34
Kanpur	-14.18	4.10	-16.06	-14.22	16.67	35.75	-13.71	16.64	-27.72	1.34
Bareilly	-11.96	3.51	-11.49	-21.61	24.06	28.67	-11.19	3.22	-15.55	-13.53
Gwalior	-25.02	9.32	-12.45	-31.94	59.66	9.95	-7.99	24.54	-29.59	-14.55
Jabalpur	-25.81	9.68	6.76	-20.28	51.54	-8.98	-19.86	62.32	-43.36	4.94

Bhopal	8.66	1.66	-17.97	-18.06	27.23	4.59	-15.83	58.90	-38.16	3.09
Nagpur	27.73	-11.63	11.64	0.42	20.77	-5.76	-14.14	59.94	-33.69	11.92
Kota	-30.43	14.73	-14.92	-33.54	56.42	-8.80	-6.75	47.41	-30.06	-27.76
Hyderabad	-1.46	-18.61	46.98	21.76	-15.60	-21.17	2.36	64.21	-43.52	33.00

**Table S2. Annual pre-monsoon AOD level percentage change of 14 biosphere reserves**

BR	2010-2011	2011-2012	2012-2013	2013-2014	2014-2015	2015-2016	2016-2017	2017-2018	2018-2019	2019-2020
Sundarban	51.40	-74.73	0.31	21.29	6.88	-28.84	18.37	-24.11	-2.23	23.01
Panna	15.49	6.43	1.04	17.82	-46.73	-1.85	23.16	-62.50	45.21	5.77
Seshachalam	21.69	-29.28	-11.06	3.72	9.03	3.16	-14.63	-15.28	17.91	17.44
Nilgiri	-13.47	-6.81	-8.70	10.76	-11.95	13.61	-9.27	-1.88	18.87	-22.23
Agasthyamalai	-4.08	-25.62	17.73	11.56	19.77	-24.12	-57.77	12.78	15.65	20.63
Khanchendzonga	12.46	-11.21	-48.10	31.07	13.02	-41.14	34.27	4.17	-27.38	22.84
Nokrek	-12.44	-5.27	10.16	0.08	-2.71	-17.58	-3.02	-5.92	13.00	7.44
Nanda Devi	-75.95	41.01	26.63	-159.56	25.51	41.83	-35.96	9.18	-65.16	-35.39
Pachmarhi	25.81	-9.68	-6.76	20.28	-51.54	8.98	19.86	-62.32	43.36	-4.94
Achanakmar-Amarkantak	20.35	-4.01	6.10	-18.29	-14.02	13.81	7.21	-42.16	33.22	-28.21
Simlipal	4.42	-11.38	3.61	1.98	-12.98	-8.81	10.73	-17.74	8.87	4.65
Manas	14.36	-27.84	3.90	5.00	4.62	-21.05	17.61	-4.81	-6.48	15.22
Dibru-Saikhowa	-23.20	-12.57	8.39	-18.52	14.48	-33.16	29.92	-10.50	-16.48	23.69
Dihang-Dibang	23.75	-23.39	-8.18	-12.60	10.99	-11.37	27.38	-24.05	7.68	8.91

**Table S3. Annual pre-monsoon LST level percentage change of 43 urban agglomerations and 13 industrial districts**

UAs and IDs	2010-2011	2011-2012	2012-2013	2013-2014	2014-2015	2015-2016	2016-2017	2017-2018	2018-2019	2019-2020
Kolkata	-1.70	5.52	-0.40	-1.22	-2.39	3.12	-2.31	0.20	0.93	1.79
Jabalpur	-4.33	0.76	-9.21	4.61	-11.12	10.30	-0.19	2.38	5.51	-14.26

Asansol	-3.96	2.36	2.04	1.26	-5.22	5.01	-8.42	-0.60	1.32	-2.43
Dhanbad	-1.75	1.65	-2.13	-1.53	-1.56	6.07	-4.03	-2.83	1.04	-7.53
Ranchi	-4.79	1.90	1.84	-1.73	-3.12	8.67	0.41	-13.01	13.42	-16.13
Jalpaiguri	4.15	-0.75	0.57	2.71	-4.97	0.09	-2.36	1.67	-2.72	2.33
Jamshedpur	-5.25	6.04	-1.90	2.06	-5.84	8.30	-1.22	-15.66	4.41	-5.46
Patna	-4.10	2.12	1.32	7.26	-1.19	0.58	-9.78	2.33	15.32	-18.83
Bhopal	-1.78	0.32	-0.55	0.76	-5.95	5.65	1.74	-0.74	8.68	-15.35
Indore	-2.85	0.90	-0.75	-2.37	-3.92	4.41	5.21	-4.32	6.74	-11.41
Lucknow	-5.30	3.73	-2.26	3.26	-6.32	6.34	1.46	-2.46	11.34	-17.17
Kanpur	-4.50	0.00	2.45	-2.08	-1.74	4.42	-2.97	-0.14	11.01	-12.40
Allahabad	-5.07	2.49	4.70	2.17	-4.07	2.99	-5.18	4.40	10.14	-18.76
Varanasi	-5.62	1.18	11.15	-5.56	0.96	6.01	0.39	-7.89	17.83	-13.96
Meerut	-10.70	2.83	2.63	-5.10	1.03	4.09	-1.71	0.78	10.05	-11.47
Ghaziabad	-10.69	5.35	-0.61	-5.48	-0.77	10.63	-2.83	-2.49	9.41	-11.66
Agra	-8.13	2.52	3.40	-0.66	-7.92	11.66	-0.07	-6.32	13.59	-11.52
Delhi	-7.70	1.06	3.98	-6.43	0.63	2.61	-0.12	0.09	9.26	-11.42
Chandigarh	-8.92	0.74	3.69	-3.29	-4.53	10.85	-2.47	3.41	7.23	-13.51
Amritsar	-9.29	-4.30	6.38	-1.77	-1.99	8.26	-2.70	1.93	9.47	-15.49
Jodhpur	-1.17	-4.18	4.45	-1.80	-3.95	2.48	-2.99	3.29	6.44	-4.84
Gwalior	-5.14	0.05	-4.70	1.65	-6.50	6.38	3.08	5.94	4.19	-14.68
Ahmedabad	-5.47	-3.81	3.55	0.55	-1.02	1.51	0.67	2.44	10.85	-19.87
Surat	-5.64	0.35	7.48	-3.16	-1.12	4.05	-4.52	0.37	4.51	-9.13
Vadodara	-8.88	0.31	-1.45	-0.62	0.00	0.86	3.02	-0.53	12.87	-9.42
Rajkot	-6.09	1.86	2.21	-3.61	3.87	-3.60	3.48	2.67	3.01	-6.49
Mumbai	-1.97	-0.87	-0.09	0.64	0.45	2.57	-2.71	-0.63	6.10	-5.52
Pune	-3.13	3.30	1.13	-3.00	-3.80	8.35	-1.96	-3.05	7.47	-9.06
Nasik	-2.64	0.10	0.67	1.49	-6.51	4.25	-1.69	-4.44	10.80	-5.87
Raipur	-14.55	11.89	-7.08	-2.97	0.17	11.49	-3.28	1.30	-1.23	-12.74

Durg-Bhilainagar	-9.03	6.46	-1.82	-4.97	-5.59	12.46	-6.93	4.48	6.91	-18.42
Hyderabad	1.07	2.21	1.88	-6.47	-1.58	8.26	1.32	-3.07	2.81	-7.12
Vijayawada	-2.73	5.00	1.61	-0.87	0.72	2.61	-3.83	-0.45	13.77	-10.50
Bangalore	0.46	4.25	2.30	2.11	-9.36	11.65	-4.51	-7.85	8.40	-3.08
Chennai	0.00	0.19	-0.11	6.06	-6.02	0.91	1.47	-0.83	6.66	-8.18
Coimbatore	-2.79	2.18	4.49	0.07	-6.41	4.00	2.22	-5.23	11.48	-10.68
Madurai	-5.86	2.22	7.90	-4.68	-7.96	5.23	4.11	-5.01	11.48	-6.19
Kannur	-0.10	-2.89	3.37	2.08	-0.72	2.02	-1.02	-7.38	3.91	3.15
Kozhikode	-6.24	1.24	4.99	1.95	-5.93	4.76	-0.25	-4.14	-1.34	6.87
Kollam	1.62	-4.90	10.35	0.63	-3.33	1.17	-4.36	0.30	5.25	2.70
Thiruvananthapuram	-1.37	-0.30	2.58	1.35	-1.96	1.26	-3.09	4.03	1.56	-2.47
Thrissur	0.36	-2.12	6.66	2.90	-6.04	1.42	0.89	0.73	-3.41	8.07
Kochi	-1.82	-3.97	4.68	-0.72	-0.17	0.13	-2.68	-0.51	4.86	-6.14
Malappuram	-0.72	0.21	4.59	-1.78	-4.93	1.57	4.50	-4.37	4.54	-0.78
Purnia	-4.15	2.24	-0.37	2.82	-7.43	4.67	-8.75	3.51	1.89	-5.14
Gorakhpur	-9.95	3.48	3.02	3.36	-9.08	10.55	-7.20	-1.61	17.92	-15.97
Cuttak	-5.33	4.07	-0.93	-0.02	-0.83	7.46	-8.25	-4.43	2.65	-7.35
Lucknow	-6.64	3.83	-1.77	0.65	-2.65	4.11	0.00	-2.52	10.63	-15.51
Kanpur	-6.67	5.11	2.33	-0.24	-7.48	8.22	-2.33	-2.23	14.24	-14.46
Bareilly	-6.72	4.13	-0.60	2.09	-6.61	4.43	-2.16	0.10	13.96	-13.56
Gwalior	-6.66	0.67	1.27	-2.13	-5.73	8.56	0.62	0.81	11.10	-16.04
Jabalpur	-3.93	0.13	0.72	-3.30	-4.90	8.08	0.65	-1.25	10.48	-12.89
Bhopal	-1.62	-1.54	3.08	-2.58	-4.06	6.64	0.03	0.41	8.48	-12.86
Nagpur	-3.48	4.31	-0.18	-5.38	-2.62	6.30	2.00	-2.64	17.14	-18.84
Kota	-5.10	-5.28	4.95	-3.62	-1.25	4.88	0.80	-1.15	6.82	-7.96
Hyderabad	-2.78	1.71	0.10	-3.25	-0.05	4.47	-1.08	-3.88	7.99	-5.02

**Table S4. LST anomaly of pre-monsoon average LST of 43 urban agglomerations and 13 industrial districts**

UAs and IDs	2010	2011	2012	2013	2014	2015	2016	2017	2018	2019	2020
Kolkata	-0.48	-1.06	0.79	0.65	0.22	-0.61	0.45	-0.36	-0.29	0.03	0.65
Jabalpur	4.12	2.09	2.43	-1.73	0.16	-4.61	-0.68	-0.76	0.24	2.61	-3.86
Asansol	1.29	-0.21	0.65	1.41	1.89	-0.12	1.71	-1.52	-1.73	-1.27	-2.13
Dhanbad	1.46	0.76	1.41	0.56	-0.04	-0.64	1.66	0.04	-1.05	-0.66	-3.51
Ranchi	1.31	-0.54	0.16	0.85	0.19	-0.98	2.17	2.33	-2.83	1.80	-4.51
Jalpaiguri	-0.51	0.66	0.44	0.61	1.40	-0.09	-0.07	-0.74	-0.27	-1.04	-0.40
Jamshedpur	1.73	-0.36	1.92	1.16	1.97	-0.37	2.76	2.26	-4.06	-2.56	-4.50
Patna	-0.25	-1.74	-1.00	-0.53	2.09	1.63	1.85	-1.91	-1.10	4.34	-3.37
Bhopal	0.72	-0.07	0.07	-0.17	0.16	-2.45	-0.12	0.64	0.31	4.13	-3.21
Indore	1.54	0.23	0.63	0.29	-0.77	-2.48	-0.63	1.65	-0.34	2.63	-2.74
Lucknow	0.79	-1.19	0.13	-0.70	0.47	-1.87	0.33	0.87	-0.05	4.09	-2.89
Kanpur	1.18	-0.55	-0.55	0.35	-0.43	-1.07	0.53	-0.59	-0.64	3.39	-1.65
Allahabad	-0.12	-2.07	-1.16	0.60	1.45	-0.18	0.97	-1.08	0.57	4.54	-3.55
Varanasi	-1.02	-3.19	-2.76	1.35	-0.93	-0.56	1.79	1.95	-1.33	5.50	-0.80
Meerut	2.35	-1.50	-0.59	0.28	-1.45	-1.12	0.21	-0.37	-0.11	3.26	-0.97
Ghaziabad	2.58	-1.51	0.32	0.10	-1.86	-2.12	1.45	0.40	-0.50	2.81	-1.68
Agra	1.45	-1.85	-0.91	0.39	0.13	-2.98	1.24	1.21	-1.34	3.80	-1.15
Delhi	2.06	-0.78	-0.42	0.95	-1.35	-1.14	-0.26	-0.30	-0.27	2.93	-1.38
Chandigarh	1.80	-1.39	-1.15	0.06	-1.06	-2.55	0.86	0.00	1.16	3.70	-1.39
Amritsar	2.33	-0.96	-2.34	-0.38	-0.96	-1.60	1.00	0.08	0.72	3.92	-1.81
Srinagar	1.00	2.94	-1.26	-0.52	-2.05	-2.65	-1.28	-0.33	2.96	0.53	0.62
Jodhpur	1.46	0.91	-1.04	0.95	0.11	-1.70	-0.61	-1.96	-0.52	2.39	0.06
Gwalior	2.48	0.27	0.29	-1.63	-0.99	-3.56	-1.20	0.01	2.42	4.22	-2.35
Ahmedabad	1.82	-0.50	-2.03	-0.66	-0.44	-0.85	-0.25	0.02	1.01	5.53	-3.64
Surat	0.85	-1.34	-1.21	1.54	0.29	-0.14	1.39	-0.39	-0.25	1.45	-2.15
Vadodara	2.87	-0.94	-0.82	-1.39	-1.63	-1.63	-1.30	-0.13	-0.34	4.77	0.55
Rajkot	1.26	-1.71	-0.86	0.17	-1.55	0.23	-1.49	0.11	1.38	2.85	-0.42

Mumbai	0.47	-0.20	-0.49	-0.52	-0.31	-0.16	0.70	-0.23	-0.44	1.58	-0.36
Pune	0.39	-0.97	0.42	0.91	-0.41	-2.03	1.40	0.53	-0.80	2.36	-1.76
Nasik	1.37	0.23	0.27	0.55	1.18	-1.62	0.09	-0.62	-2.45	1.80	-0.76
Raipur	3.81	-2.32	1.96	-0.89	-2.00	-1.94	2.24	0.91	1.42	0.93	-4.07
Durg-Bhilainagar	3.26	-0.69	1.88	1.11	-0.96	-3.17	1.48	-1.43	0.32	3.14	-4.90
Hyderabad	-0.88	-0.44	0.48	1.28	-1.52	-2.16	1.13	1.70	0.36	1.55	-1.55
Vijayawada	-1.31	-2.31	-0.53	0.07	-0.26	0.01	1.00	-0.49	-0.66	4.47	0.02
Bangalore	-1.34	-1.18	0.29	1.12	1.90	-1.63	2.35	0.63	-2.23	0.59	-0.53
Chennai	-0.58	-0.58	-0.51	-0.55	1.66	-0.67	-0.34	0.20	-0.11	2.35	-0.87
Coimbatore	-0.38	-1.50	-0.65	1.14	1.17	-1.50	0.06	0.96	-1.21	3.30	-1.38
Madurai	0.80	-1.70	-0.81	2.43	0.36	-3.00	-0.97	0.71	-1.42	3.22	0.43
Kannur	-0.09	-0.12	-1.02	0.00	0.65	0.42	1.06	0.73	-1.63	-0.47	0.50
Kozhikode	0.68	-1.31	-0.94	0.57	1.19	-0.73	0.72	0.64	-0.68	-1.09	0.98
Kollam	-0.99	-0.51	-1.99	0.98	1.18	0.12	0.48	-0.88	-0.79	0.78	1.63
Thiruvananthapuram	-0.21	-0.62	-0.71	0.05	0.46	-0.14	0.24	-0.70	0.49	0.97	0.20
Thrissur	-0.92	-0.81	-1.46	0.54	1.47	-0.52	-0.08	0.20	0.43	-0.66	1.83
Kochi	0.90	0.34	-0.86	0.50	0.28	0.23	0.27	-0.54	-0.69	0.73	-1.15
Malappuram	-0.25	-0.49	-0.42	1.11	0.49	-1.20	-0.69	0.80	-0.71	0.79	0.52
Purnia	1.55	0.26	0.93	0.81	1.67	-0.65	0.70	-1.94	-0.97	-0.43	-1.93
Gorakhpur	1.66	-1.94	-0.81	0.21	1.38	-1.88	1.56	-1.04	-1.58	4.33	-1.88
Cuttak	1.45	-0.49	0.91	0.58	0.57	0.28	2.90	-0.21	-1.75	-0.87	-3.37
Lucknow	1.43	-0.99	0.31	-0.31	-0.09	-1.01	0.39	0.39	-0.51	3.17	-2.77
Kanpur	0.64	-1.90	-0.08	0.79	0.70	-2.16	0.74	-0.15	-0.98	4.22	-1.82
Bareilly	1.23	-1.16	0.21	0.00	0.72	-1.60	-0.14	-0.88	-0.85	3.83	-1.35
Gwalior	1.93	-0.83	-0.57	-0.08	-0.92	-3.13	-0.02	0.23	0.55	4.99	-2.15
Jabalpur	1.54	-0.08	-0.02	0.26	-1.06	-2.95	0.02	0.28	-0.22	3.92	-1.70
Bhopal	0.51	-0.23	-0.92	0.45	-0.73	-2.54	0.29	0.31	0.49	4.37	-2.01
Nagpur	0.42	-1.09	0.71	0.63	-1.71	-2.79	-0.26	0.59	-0.56	6.70	-2.64

Kota	2.52	0.34	-1.80	0.10	-1.36	-1.85	0.02	0.34	-0.12	2.61	-0.80
Hyderabad	0.72	-0.42	0.26	0.30	-1.02	-1.04	0.72	0.28	-1.31	1.83	-0.30

**Table S5. LST anomaly of pre-monsoon average LST of 14 biosphere reserves**

Name	2010	2011	2012	2013	2014	2015	2016	2017	2018	2019	2020
Panna	1.71	0.47	0.33	0.36	-1.74	-3.07	1.99	0.19	-1.21	3.52	-2.55
Sundarban	-0.31	-0.21	0.00	0.45	1.05	-0.13	-0.12	-0.44	-0.37	-0.02	0.10
Seshachalam	0.00	-0.50	0.04	1.86	0.13	-0.95	0.38	0.08	-3.14	1.74	0.36
Nilgiri	0.64	-2.91	1.18	0.07	1.17	-1.51	0.94	0.05	-1.55	1.63	0.27
Agasthyamalai	1.09	-0.81	0.26	0.63	0.02	-1.66	0.07	2.39	-1.69	1.21	-1.50
Khanchendzonga	0.53	0.32	-0.38	-0.57	-0.43	-0.58	0.38	0.41	0.03	1.60	-1.32
Nokrek	0.69	-0.83	1.07	1.16	1.33	-0.31	0.71	-1.17	-0.43	-1.36	-0.84
Nanda Devi	3.61	-1.21	-1.21	-0.05	-2.12	-1.63	1.55	0.97	0.63	1.62	-2.17
Pachmarhi	3.12	2.37	0.80	-0.53	-0.76	-2.20	-0.93	-0.22	-1.27	2.46	-2.85
Achanakmar-Amarkantak	2.35	0.96	0.87	-0.94	-2.22	-2.88	0.72	2.04	0.28	4.63	-5.80
Simlipal	1.32	-0.78	1.00	0.36	2.04	0.84	1.90	1.32	-2.66	-1.49	-3.82
Manas	-0.98	0.30	0.50	0.98	1.11	-0.13	-0.44	-0.62	-0.58	-1.23	1.09
Dibru-Saikhowa	-2.02	0.32	1.14	0.28	1.93	1.34	-1.36	-0.69	-0.48	-0.85	0.38
Dihang-Dibang	-0.07	-1.20	-1.11	0.43	0.99	0.66	-0.88	-0.02	-0.18	1.74	-0.36



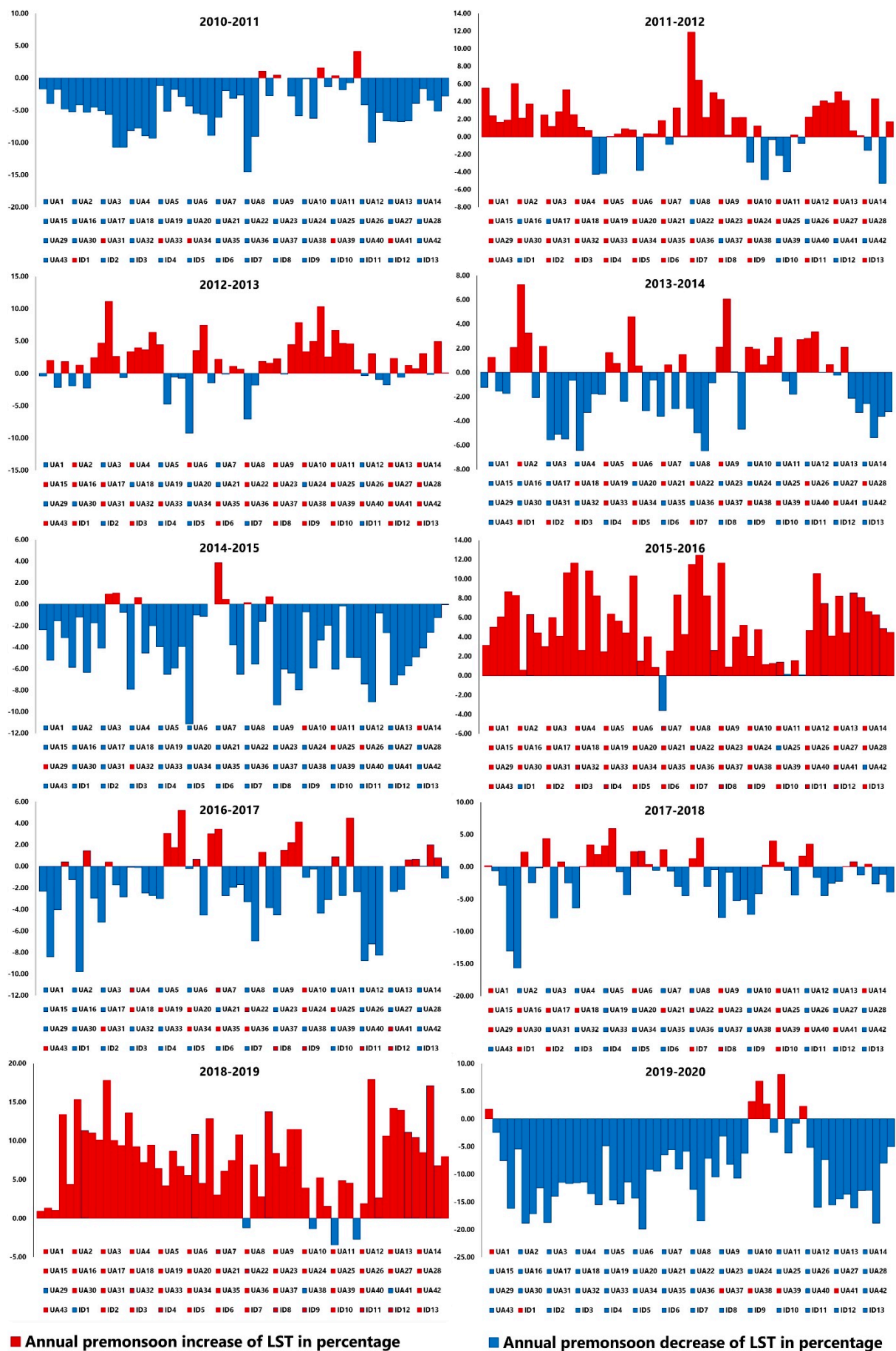


Figure S1. Annual pre-monsoon LST level percentage change