

# ODM Quality Report

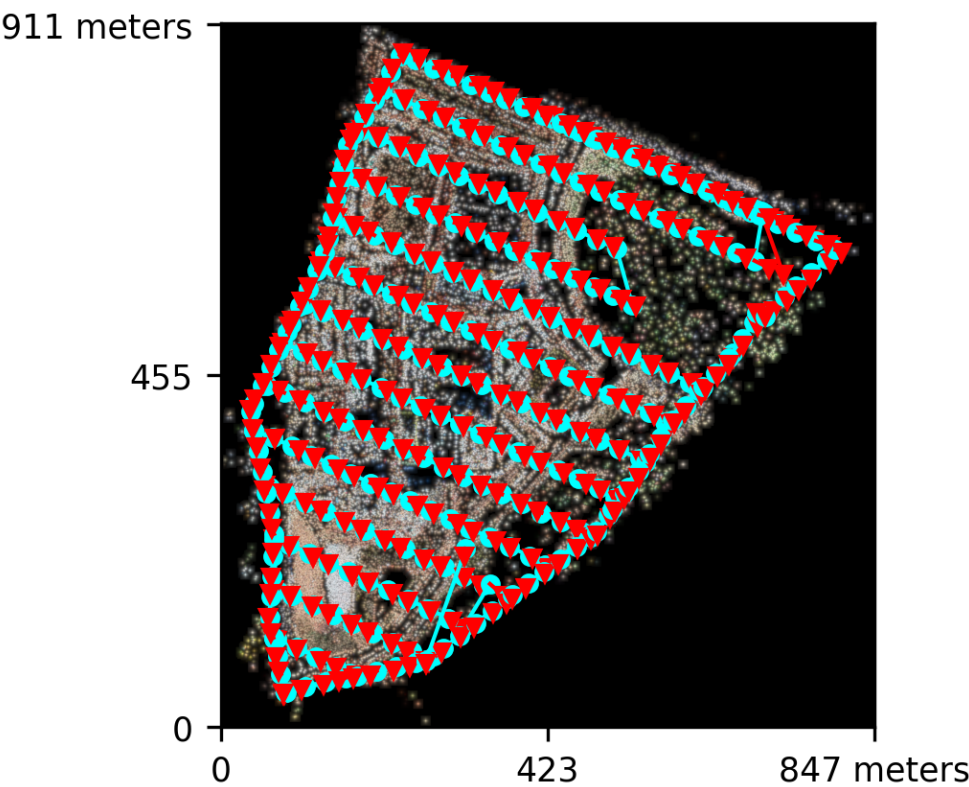
Processed with ODM version 2.8.0

## Dataset Summary

Date	16/02/2022 at 20:38:49
Area Covered	0.626032 km²
Processing Time	2.0h:15.0m:31.0s
Capture Start	23/11/2021 at 12:58:24
Capture End	23/11/2021 at 13:15:17

## Processing Summary

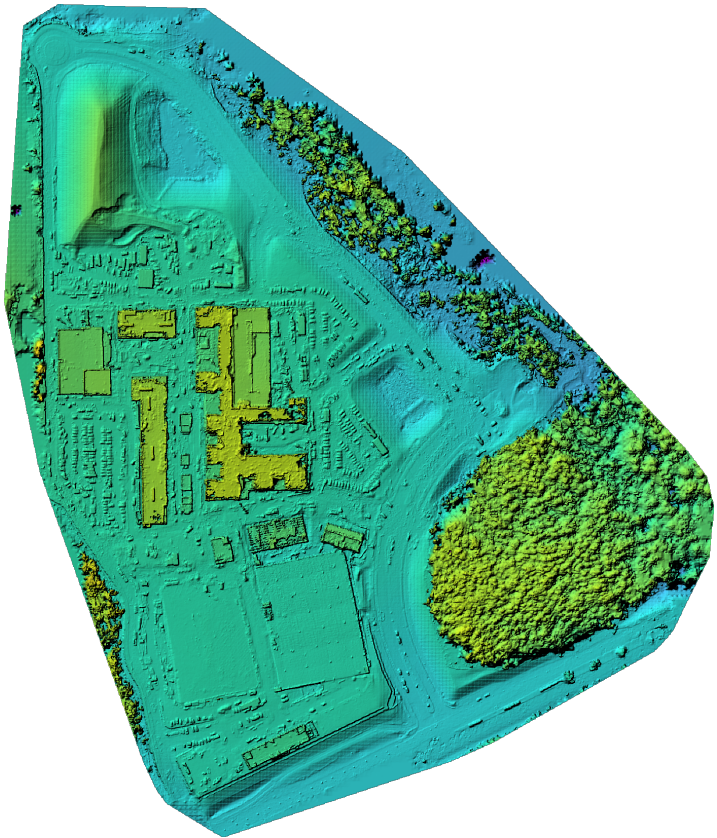
Reconstructed Images	326 over 339 shots (96.2%)
Reconstructed Points (Sparse)	596830 over 632905 points (94.3%)
Reconstructed Points (Dense)	3,779,028 points
Average Ground Sampling Distance (GSD)	6.2 cm
Detected Features	25,994 features
Reconstructed Features	5,575 features
Geographic Reference	GPS
GPS errors	7.16 meters



Previews



Orthophoto

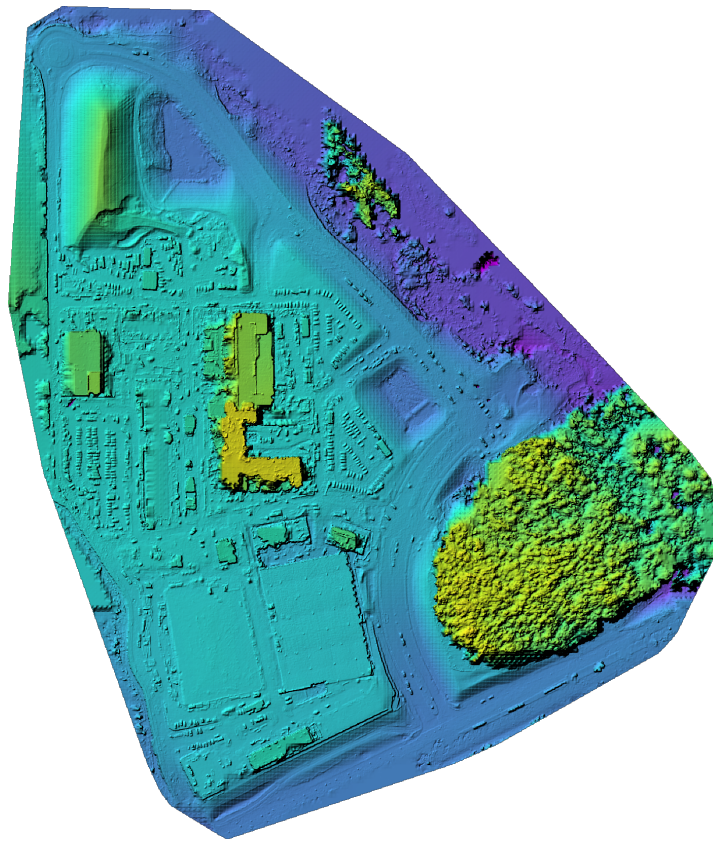


Digital Surface Model



14.99m

95.82m



Digital Terrain Model



38.43m

89.69m

# Survey Data



## GPS/GCP/3D Errors Details

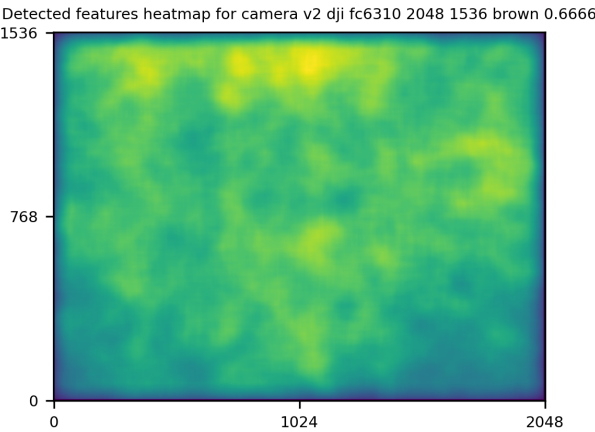
GPS	Mean	Sigma	RMS Error
X Error (meters)	-3.192	10.425	10.903
Y Error (meters)	-1.617	7.095	7.277
Z Error (meters)	0.560	4.421	4.456
Total			7.157

3D	Mean	Sigma	RMS Error
X Error (meters)	0.027	0.092	0.096
Y Error (meters)	0.034	0.098	0.104
Z Error (meters)	0.040	0.090	0.099
Total			0.068

	Absolute	Relative
Horizontal Accuracy CE90 (meters)	10.696	0.095
Vertical Accuracy LE90 (meters)	2.038	0.090



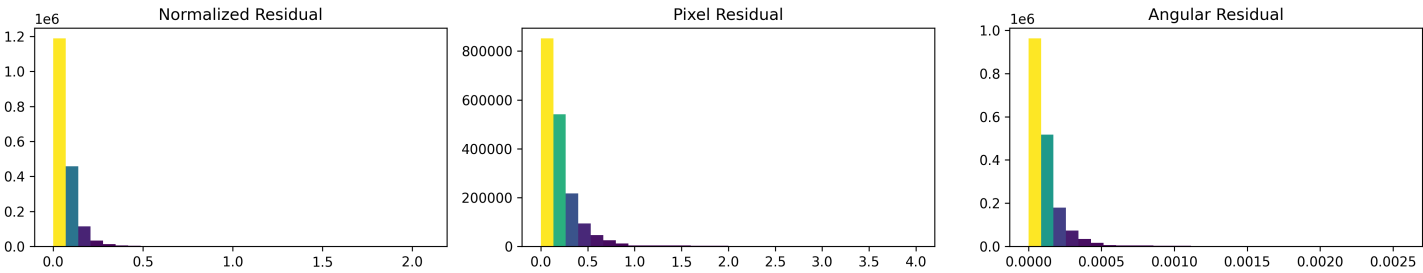
# Features Details



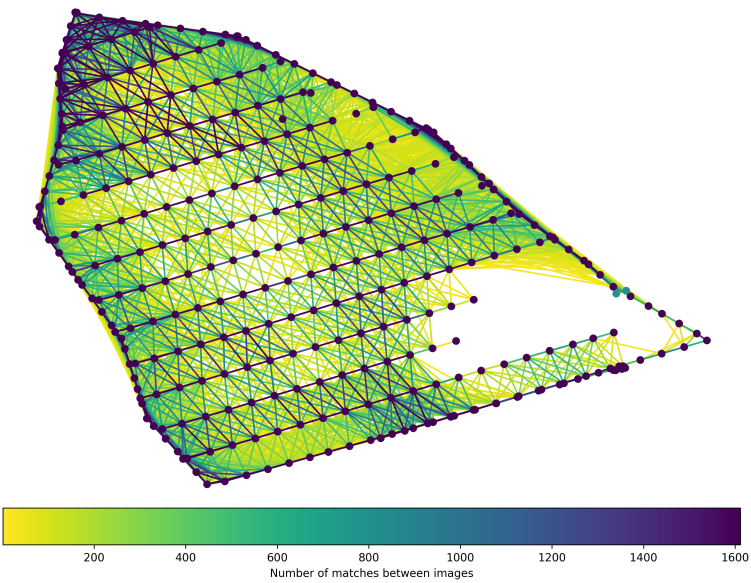
	Min.	Max.	Mean	Median
Detected	10025	71818	29060	25994
Reconstructed	12	21323	5600	5575

# Reconstruction Details

Average Reprojection Error (normalized / pixels / angular)	0.07 / 0.21 / 0.00012
Average Track Length	3.06 images
Average Track Length (> 2)	4.34 images



Tracks Details



Length	2	3	4	5	6	7	8	9	10
Count	326185	124689	59633	34693	21706	11963	6869	4193	2640

Camera Models Details

v2 dji fc6310 2048 1536 brown 0.6666

	k1	k2	k3	p1	p2	focal	aspect_ratio	cx	cy
Initial	0.0000	0.0000	0.0000	0.0000	0.0000	0.6667	1.0000	0.0000	0.0000
Optimized	0.0025	-0.0168	0.0175	0.0011	0.0023	0.7524	1.0000	0.0045	0.0014

