

Supplementary Materials

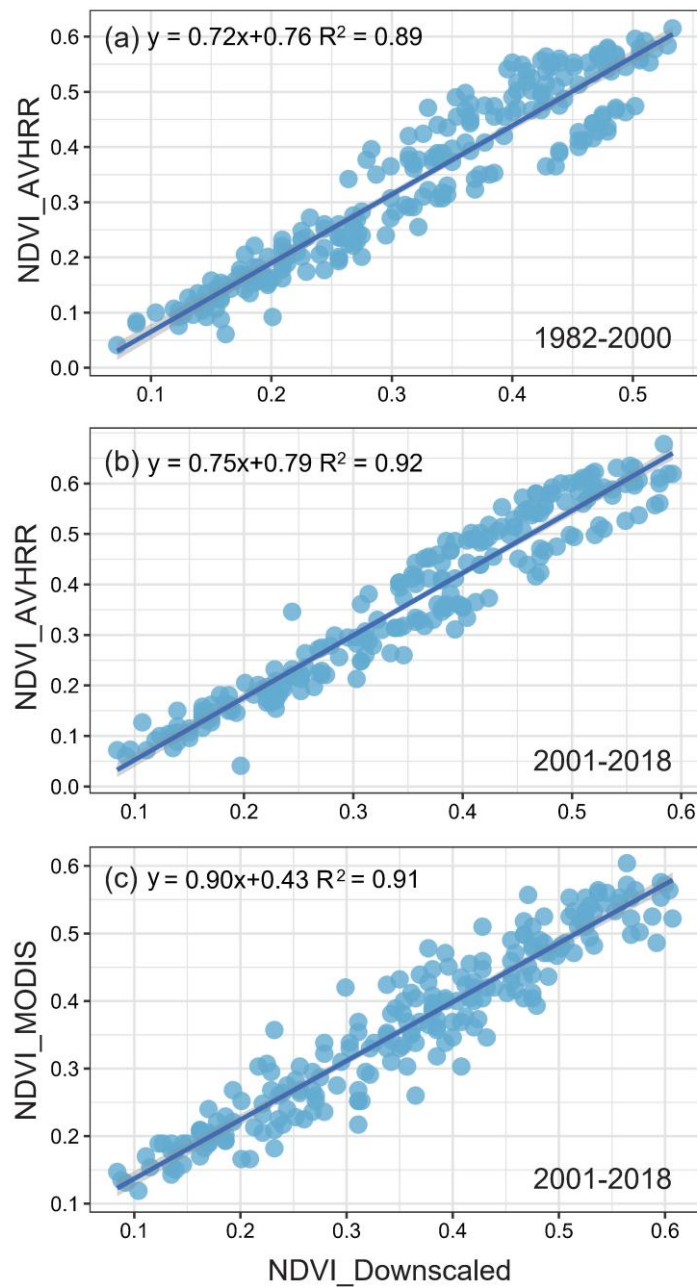


Figure S1. Linear regressions between the downscaled and AVHRR NDVI in Idaho from 1982 to 2000 (a), and from 2001 to 2018 (b). (c) Linear regressions between the downscaled and MODIS NDVI in Idaho from 2001 to 2018. The monthly median NDVI values derived from the three NDVI products were used in the scatter plots.

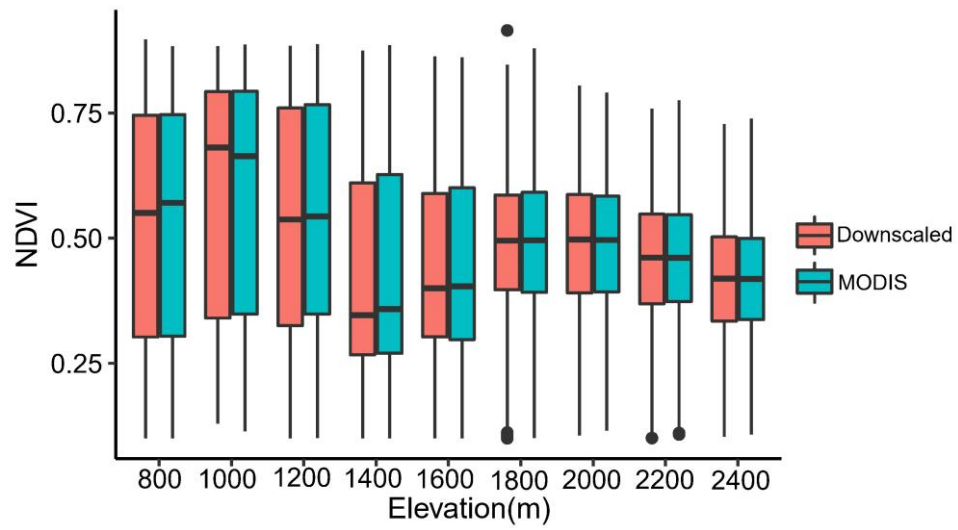


Figure S2. Quartile statistics of the downscaled (red) and MODIS (blue) NDVI for different elevation gradients in Idaho during the growing period in 2016.