

Figure S1. The NO₂ distribution over the study area: (a) in weekdays, and (b) in weekends.

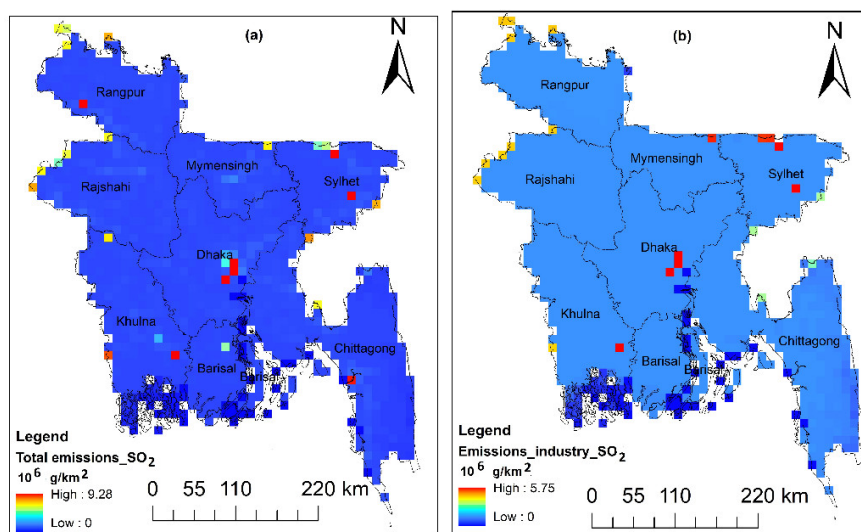


Figure S2. The emission inventory of SO₂ over the study area: (a) the total emissions, and (b) the industry emissions.

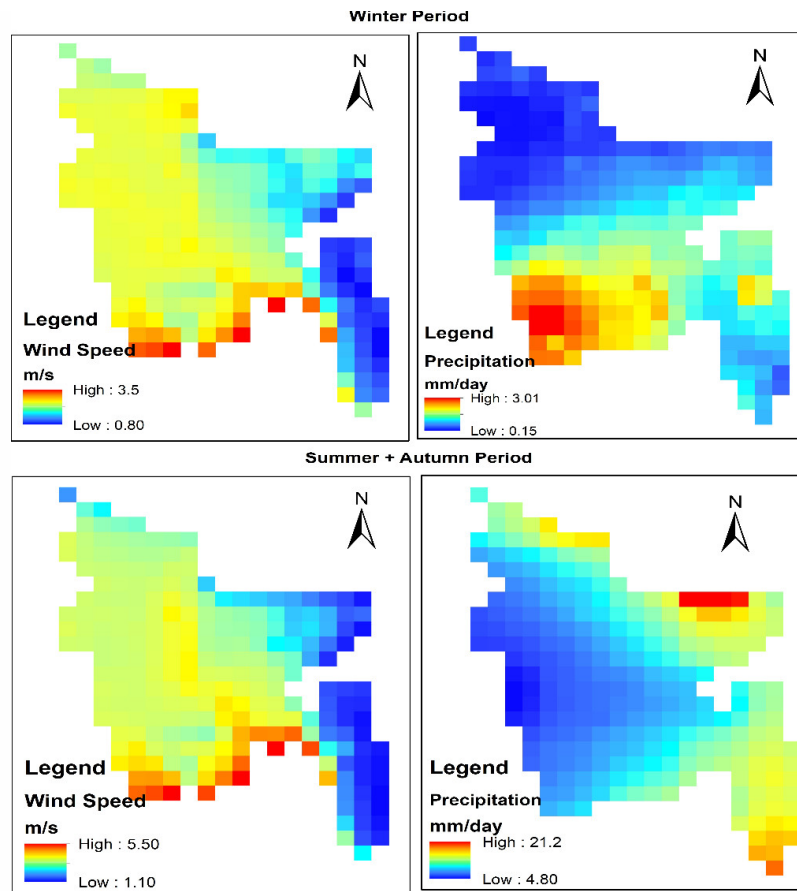


Figure S3. The spatial distribution of wind speed and precipitation during winter and rest of the period: the first column of the figure represents the dry deposition and the second one for wet deposition.

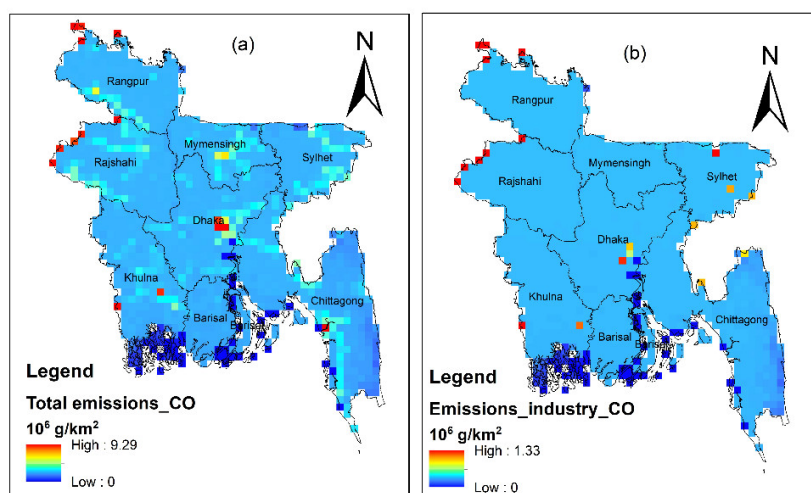


Figure S4. The emission inventory of CO over the study area: (a) the total emissions, and (b) the industry emissions.