

Supplementary material

Mapping a cloud-free rice growth stages using the integration of PROBA-V and Sentinel-1 and its temporal correlation with sub-district statistics

Fadhlullah Ramadhani ^{1,2,*}, Reddy Pullanagari ³, Gabor Kereszturi ¹ and Jonathan Procter ¹

Table S1. The cross-correlation between rice growth stages area (vegetative, reproductive, and ripening) and local statistics (rice planting and harvested area).

No	Subdistrict	Area (ha)	Veg - Plant		Veg - Repro		Veg - Ripe		Veg - Harv		Repro - Ripe		Repro - Harv		Ripe - Harv		Plant - Harv	
			Corr.	Lag	Corr.	Lag	Corr.	Lag	Corr.	Lag	Corr.	Lag	Corr.	Lag	Corr.	Lag	Corr.	Lag
INDRAMAYU																		
1	Anjatan	6,419	0.68**	0	0.70**	48	0.74**	90	0.66**	84	0.85**	36	0.75**	48	0.86**	0	0.61**	90
2	Arahan	1,958	0.58**	0	0.68**	48	0.56**	72	0.56**	90	0.77**	36	0.67**	48	0.79**	12	0.66**	90
3	Balongan	1,085	0.58**	0	0.65**	36	0.60**	72	0.59**	84	0.74**	36	0.62**	48	0.75**	12	0.64**	84
4	Bangodua	3,601	0.69**	0	0.74**	48	0.53**	84	0.65**	90	0.54**	36	0.65**	48	0.77**	0	0.57**	90
5	Bongas	3,831	0.62**	0	0.57**	48	0.62**	90	0.55**	90	0.76**	48	0.81**	48	0.85**	0	0.51**	84
6	Cantigi	697	0.69**	0	0.62**	48	0.55**	84	0.52**	90	0.73**	24	0.55**	36	0.68**	12	0.48*	108
7	Cikedung	4,120	0.76**	0	0.82**	48	0.51**	84	0.58**	84	0.5**	36	0.66**	48	0.52**	12	0.71**	84
8	Gabuswetan	6,241	0.63**	0	0.79**	48	0.58**	72	0.64**	84	0.64**	36	0.68**	36	0.58**	0	0.72**	84
9	Gantar	8,059	0.1	0	0.79**	36	0.54**	72	0.67**	84	0.46*	36	0.64**	36	0.68**	12	0.46*	108
10	Haurgeulis	4,403	0.57**	0	0.80**	36	0.51**	72	0.64**	84	0.59**	36	0.75**	36	0.57**	0	0.68**	84
11	Indramayu	1,711	0.55**	0	0.64**	48	0.53**	72	0.51**	90	0.81**	36	0.66**	48	0.72**	12	0.69**	90
12	Jatibarang	2,609	0.52**	0	0.62**	48	0.55**	84	0.55**	90	0.82**	36	0.61**	48	0.78**	24	0.61**	90
13	Juntinyuat	3,697	0.65**	0	0.70**	36	0.56**	72	0.53**	84	0.77**	36	0.73**	36	0.81**	0	0.57**	90
14	Kandanghaur	5,941	0.64**	0	0.49*	48	0.42*	84	0.39*	90	0.82**	36	0.69**	36	0.72**	0	0.47*	90
15	Karangampel	2,066	0.57**	0	0.63**	48	0.51**	84	0.63**	90	0.77**	36	0.62**	48	0.64**	12	0.59**	90
16	Kedokan Bunder	2,301	0.65**	0	0.67**	48	0.44*	84	0.54**	90	0.68**	36	0.57**	60	0.65**	12	0.45*	84
17	Kertasemaya	2,485	0.35*	0	0.61**	48	0.51**	84	0.56**	90	0.73**	36	0.74**	48	0.72**	12	0.47*	90

18	Krangkeng	4,623	0.47*	0	0.67**	48	0.72**	84	0.64**	108	0.66**	36	0.75**	48	0.72**	12	0.43*	108
19	Kroya	10,064	0.42*	0	0.77**	36	0.50**	72	0.66**	84	0.52**	24	0.67**	36	0.64**	0	0.42*	90
20	Lelea	4,709	0.65**	0	0.80**	48	0.49*	84	0.61**	90	0.55**	36	0.62**	60	0.61**	24	0.49*	108
21	Lohbener	2,479	0.63**	0	0.70**	48	0.65**	84	0.61**	90	0.79**	36	0.68**	48	0.70**	12	0.58**	90
22	Losarang	5,066	0.38*	0	0.69**	36	0.45*	84	0.62**	108	0.60**	36	0.72**	60	0.73**	24	0.35*	108
23	Pasekan	597	0.63**	0	0.65**	48	0.58**	72	0.48*	90	0.74**	24	0.65**	48	0.8**	12	0.54**	90
24	Patrol	2,523	0.6**	0	0.70**	48	0.76**	84	0.65**	84	0.81**	36	0.76**	48	0.77**	12	0.65**	90
25	Sindang	1,381	0.69**	0	0.73**	48	0.57**	84	0.51**	108	0.74**	36	0.65**	48	0.8**	12	0.51**	90
26	Sliyeg	4,607	0.63**	0	0.67**	48	0.56**	84	0.6**	90	0.76**	36	0.75**	48	0.79**	12	0.62**	90
27	Sukagumiwang	2,245	0.51**	0	0.70**	48	0.49*	84	0.48*	108	0.62**	36	0.50**	48	0.64**	12	0.51**	108
28	Sukra	3,351	0.41*	0	0.65**	48	0.66**	84	0.53**	84	0.91**	36	0.77**	48	0.79**	12	0.65**	90
29	Terisi	7,297	0.65**	0	0.84**	36	0.46*	72	0.71**	84	0.46*	36	0.75**	48	0.56**	12	0.73**	84
30	Tukdana	3,692	0.58**	0	0.63**	48	0.60**	84	0.62**	90	0.61**	36	0.65**	48	0.82**	12	0.50**	84
31	Widasari	3,011	0.69**	0	0.78**	48	0.59**	84	0.55**	90	0.60**	36	0.54**	48	0.72**	12	0.56**	90
KARAWANG																		
32	Banyusari	4,332	0.75**	0	0.59**	60	0.69**	84	0.66**	90	0.68**	36	0.82**	60	0.72**	12	0.58**	108
33	Batujaya	4,881	0.56**	0	0.61**	48	0.54**	84	0.48*	84	0.80**	36	0.82**	36	0.81**	0	0.84**	90
34	Ciampel	1,213	0.37**	0	0.21	48	0.02	84	0.14	84	0.55**	24	0.33*	48	0.49*	36	0.29**	84
35	Cibuaya	4,772	0.68**	0	0.58**	48	0.64**	84	0.55**	90	0.84**	36	0.80**	36	0.86**	0	0.79**	90
36	Cikampek	341	0.5**	24	0.42	48	0.42*	84	0.55**	108	0.50**	36	0.59**	36	0.68**	12	0.44*	60
37	Cilamaya Kulon	5,424	0.73**	12	0.65**	60	0.69**	90	0.62**	90	0.75**	36	0.71**	36	0.81**	0	0.78**	90
38	Cilamaya Wetan	5,031	0.73**	12	0.74**	60	0.74**	90	0.64**	90	0.82**	36	0.75**	48	0.80**	0	0.63**	84
39	Cilebar	5,243	0.7**	0	0.63**	48	0.66**	84	0.60**	90	0.84**	36	0.82**	36	0.81**	0	0.80**	90
40	Jatisari	3,968	0.76**	0	0.65**	48	0.47*	84	0.61**	90	0.64**	36	0.70**	60	0.70**	24	0.47*	108
41	Jayakarta	3,393	0.54**	0	0.64**	48	0.67**	84	0.43*	90	0.81**	36	0.59**	48	0.68**	24	0.74**	90
42	Karawang Barat	2,248	0.59**	12	0.50**	60	0.49*	84	0.50**	108	0.66**	24	0.54**	60	0.72**	12	0.63**	90
Karawang																		
43	Timur	1,358	0.59**	0	0.62**	48	0.50**	84	0.45*	90	0.64**	36	0.55**	48	0.67**	12	0.68**	90
44	Klari	2,509	0.29	0	0.36*	48	0.12	84	0.35*	60	0.47*	36	0.14	36	0.20	0	0.25	108
45	Kotabaru	1,416	0.71**	0	0.64**	36	0.44*	84	0.63**	108	0.53**	36	0.59**	36	0.73**	12	0.62**	90

46	Kutawaluya	4,440	0.40*	0	0.59**	48	0.67**	90	0.55**	90	0.72**	48	0.54**	48	0.75**	0	0.65**	90
47	Lemahabang	4,034	0.65**	0	0.56**	60	0.48*	90	0.59**	90	0.59**	36	0.59**	36	0.59**	0	0.61**	90
48	Majalaya	2,417	0.64**	12	0.61**	60	0.52**	84	0.42*	90	0.67**	36	0.61**	36	0.66**	12	0.52**	90
49	Pakisjaya	3,013	0.23	0	0.60**	48	0.57**	84	0.46*	84	0.81**	36	0.75**	48	0.79**	12	0.48*	108
50	Pangkalan	3,025	0.6**	0	0.49**	36	0.45*	72	0.48*	84	0.51**	36	0.59**	36	0.48*	12	0.71**	84
51	Pedes	5,342	0.65**	0	0.66**	48	0.73**	84	0.59**	90	0.80**	36	0.68**	36	0.78**	12	0.8**	90
52	Purwasari	1,768	0.62**	0	0.53**	60	0.53**	84	0.51**	108	0.75**	24	0.73**	60	0.78**	24	0.62**	90
53	Rawamerta	3,516	0.48*	12	0.67**	48	0.59**	72	0.68**	90	0.75**	24	0.66**	48	0.79**	12	0.44*	108
54	Rengasdengklok	2,469	0.19	24	0.38*	60	0.35*	84	0.35*	108	0.65**	36	0.47**	36	0.32*	0	0.27	90
55	Talagasari	4,144	0.74**	12	0.70**	60	0.56**	90	0.63**	108	0.68**	48	0.64**	60	0.61**	12	0.50**	90
56	Tegalwaru	1,968	0.69**	0	0.54**	48	0.48**	84	0.48*	84	0.66**	36	0.61**	36	0.71**	24	0.58**	84
57	Telukjambe Barat	2,625	0.31*	0	0.31*	48	0.06	90	0.15	90	0.44*	36	0.55**	36	0.67**	0	0.62**	84
58	Telukjambe Timur	1,029	0.31*	24	0.17	60	0.03	90	0.26	108	0.76**	36	0.48*	60	0.53**	36	0.47*	84
59	Tempuran	7,215	0.66**	24	0.73**	60	0.70**	90	0.61**	108	0.80**	36	0.67**	48	0.76**	12	0.50**	90
60	Tirtajaya	5,061	0.61**	0	0.62**	48	0.60**	84	0.63**	90	0.78**	24	0.79**	48	0.81**	12	0.79**	90
61	Tirtamulya	3,508	0.72**	0	0.60**	60	0.45**	90	0.63**	108	0.55**	24	0.61**	48	0.65**	24	0.58**	90
SUBANG																		
62	Binong	4,014	0.52**	0	0.61**	48	0.58**	90	0.31*	72	0.8**	48	0.37*	48	0.44*	0	0.59**	84
63	Blanakan	5,234	0.65**	0	0.73**	48	0.77**	84	0.64**	84	0.86**	36	0.66**	24	0.64**	0	0.68**	90
64	Ciasem	8,817	0.54**	0	0.56**	48	0.59**	90	0.51**	84	0.82**	36	0.76**	36	0.82**	0	0.68**	84
65	Ciater	951	0.15	24	0.03	48	-0.01	90	0.14	108	0.47*	12	0.02**	60	-0.10	36	0.74**	84
66	Cibogo	1,990	0.48*	0	0.82**	36	0.60**	72	0.56**	72	0.66**	36	0.54**	36	0.63**	0	0.61**	84
67	Cijambe	2,316	0.39*	24	0.37*	60	0.26	84	0.27	108	0.31*	36	0.36*	60	0.16	36	0.76**	84
68	Cikaum	2,723	0.45*	0	0.63**	36	0.55**	84	0.41*	84	0.76**	36	0.52**	48	0.53**	0	0.67**	84
69	Cipeundeuy	1,933	0.13	24	0.76**	36	0.59**	84	0.20	72	0.70**	36	0.24	48	0.04**	36	0.51**	90
70	Cipunagara	5,974	0.73**	0	0.85**	36	0.56**	72	0.69**	84	0.59**	36	0.74**	48	0.57**	12	0.57**	84
71	Cisalak	1,328	0.20	48	0.23	48	0.31*	90	0.11	60	0.43*	36	0.01	48	-0.07	12	0.66**	90
72	Compreng	5,492	0.21	0	0.69**	48	0.61**	84	0.41*	84	0.81**	36	0.39*	36	0.40*	0	0.69**	90

73	Dawuan	597	0.20	24	0.24	36	0.29	90	0.23	72	0.22	36	0.42*	36	0.20	24	0.74**	90
74	Jalancagak	582	0.39*	24	0.52**	36	0.35*	84	0.41*	108	0.45*	36	0.24	60	0.23	36	0.65**	90
75	Kalijati	2,549	0.57**	12	0.65**	36	0.48*	72	0.29	108	0.59**	36	0.29	48	0.38*	36	0.48*	84
76	Kasomalang	695	0.32*	12	0.48*	48	0.27	90	0.27	90	0.57**	36	0.39*	48	0.18	36	0.77**	84
77	Legonkulon	2,694	0.58**	0	0.46*	60	0.57**	90	0.57**	90	0.73**	36	0.50**	24	0.65**	0	0.87**	90
78	Pabuaran	5,441	0.64**	0	0.70**	36	0.55**	72	0.46*	84	0.61**	36	0.60**	36	0.66**	12	0.66**	90
79	Pagaden	2,691	0.45*	0	0.74**	36	0.61**	84	0.51**	72	0.61**	48	0.58**	36	0.48*	0	0.76**	84
80	Pagaden Barat	3,151	0.48*	0	0.58**	36	0.62**	72	0.55**	72	0.66**	36	0.39*	36	0.52**	0	0.68**	90
81	Pamanukan	2,127	0.54**	0	0.70**	48	0.71**	90	0.72**	84	0.63**	36	0.65**	36	0.72**	0	0.56**	90
82	Patokbeusi	7,066	0.52**	0	0.78**	48	0.43*	84	0.47*	84	0.62**	36	0.60**	36	0.62**	12	0.72**	84
83	Purwadadi	1,418	0.05**	24	0.72**	48	0.46*	84	0.1	60	0.69**	36	0.22	24	0.07**	24	0.60**	90
84	Pusakajaya	4,529	0.74**	0	0.67**	48	0.75**	84	0.67**	90	0.77**	36	0.72**	60	0.74**	12	0.61**	108
85	Pusakanagara	2,399	0.66**	0	0.57**	48	0.57**	84	0.56**	90	0.79**	36	0.68**	36	0.81**	12	0.80**	90
86	Sagalaherang	939	0.17	0	0.20	36	0.20	90	0.13	84	0.45*	12	0.08**	24	0.26	0	0.79**	84
87	Serangpanjang	1,599	0.34*	24	0.49*	36	0.33*	84	0.15	108	0.38*	12	0.16	48	0.11	36	0.76**	90
88	Subang	1,312	-0.01	48	0.78**	36	0.50**	84	0.21	60	0.46*	36	0.03	24	-0.05	24	0.64**	84
89	Sukasari	3,298	0.46*	0	0.71**	60	0.69**	90	0.71**	84	0.72**	36	0.63**	24	0.7**	0	0.7**	90
90	Tambakdahan	5,334	0.52**	0	0.72**	48	0.72**	84	0.66**	84	0.83**	36	0.71**	36	0.73**	0	0.54**	108
91	Tanjungsiang	1,281	0.26	24	0.56**	36	0.53**	84	0.17	108	0.7**	36	0.21	60	0.19	36	0.68**	84
Total/ Average		309,046	0.52**	5.27	0.61**	46.95	0.52**	83.14	0.50**	89.47	0.66**	34.68	0.57**	44.04	0.60**	12.00	0.61**	90.40

Note : Corr = Correlation, Veg = Vegetative stage area (remote sensing), Repro = Reproductive stage area (remote sensing), Ripe = Ripening stage area (remote sensing), Plant = Paddy planting area (local statistics), Harv = Paddy harvested area (local statistics), unit in Lag is day (s), ** = $p < 0.01$ (highly significant) and * = $p < 0.05$ (statistically significant)

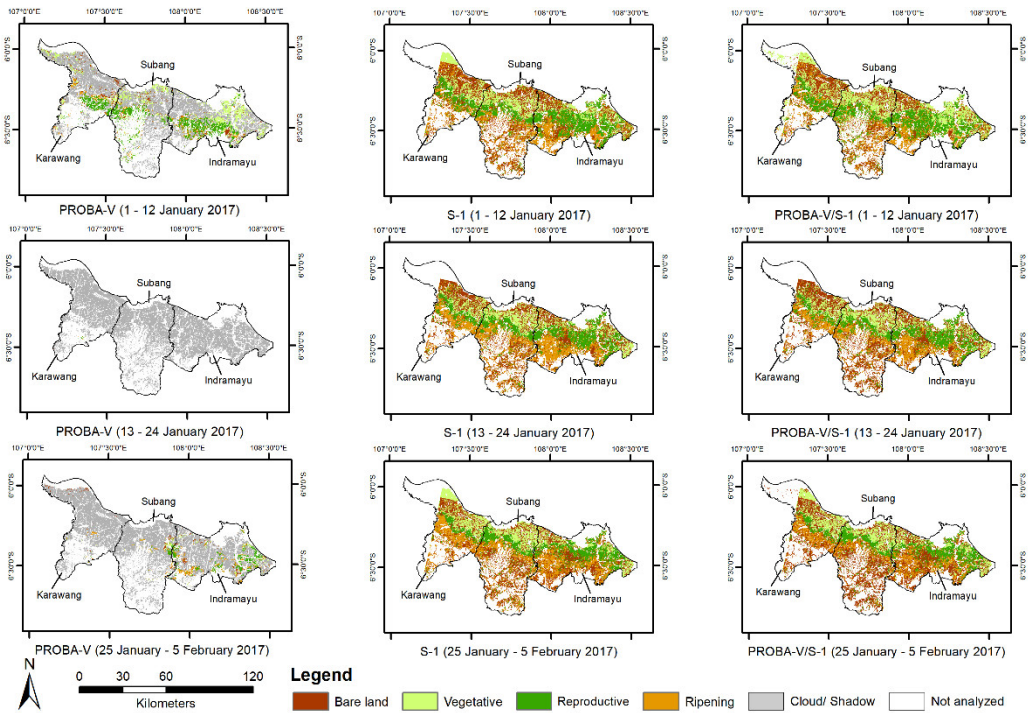


Figure S1. The rice growth stages map from PROBA-V, Sentinel-1, and the integration of PROBA-V and Sentinel-1 on three periods (1 - 12 January 2017, 13 - 24 January 2017, and 25 January - 5 February 2017).

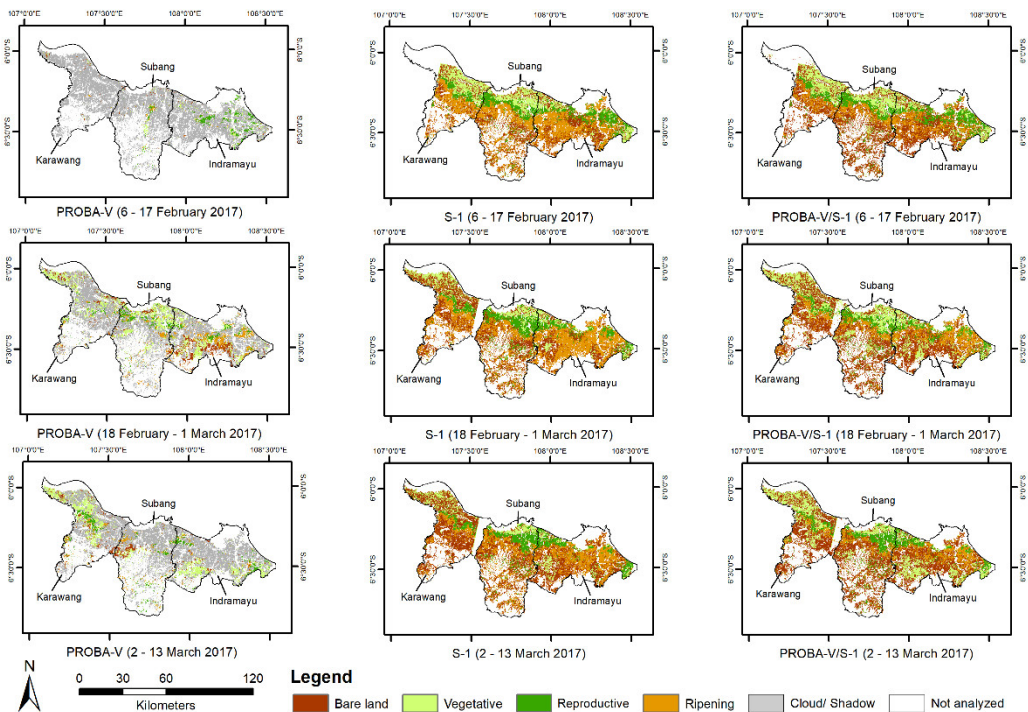


Figure S2. The rice growth stages map from PROBA-V, Sentinel-1, and the integration of PROBA-V and Sentinel -1 on three periods (6 – 17 February 2017, 18 February – 1 March 2017, and 2 - 13 March 2017).

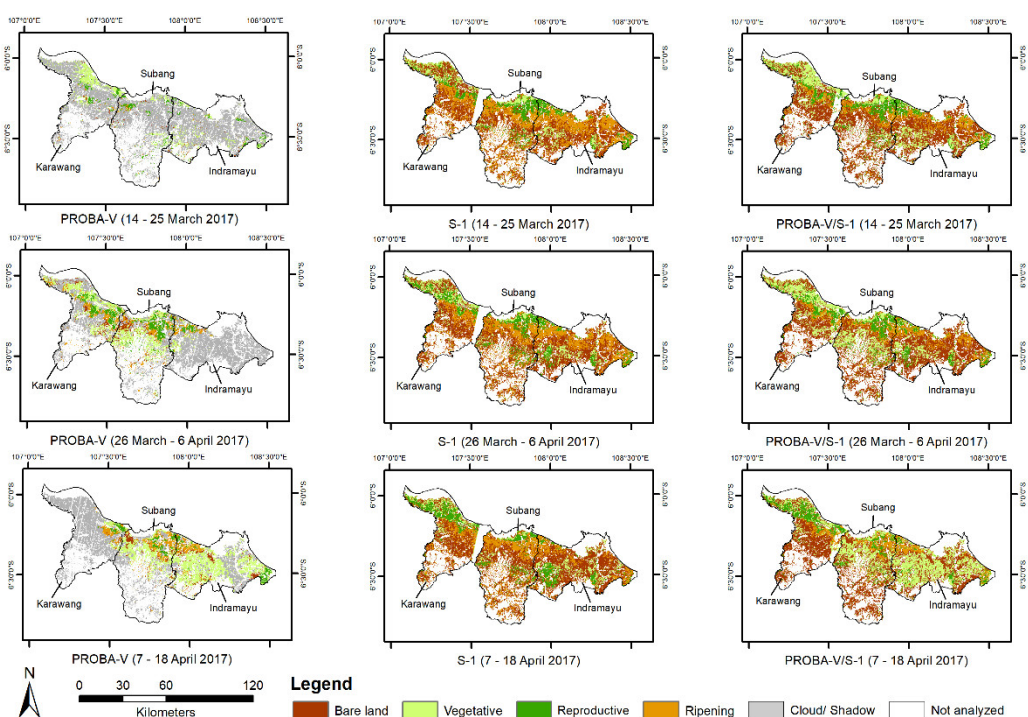


Figure S3. The rice growth stages map from PROBA-V, Sentinel-1, and the integration of PROBA-V and Sentinel -1 on three periods (14 – 25 March 2017, 26 March – 6 April 2017, and 7 - 18 2017)

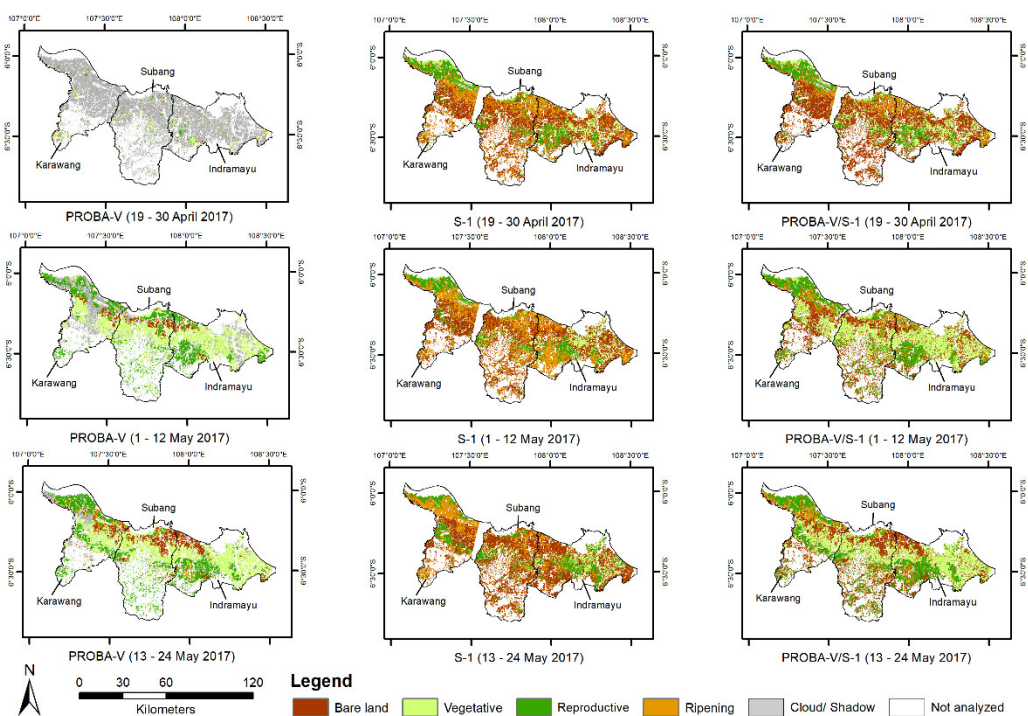


Figure S4. The rice growth stages map from PROBA-V, Sentinel-1, and the integration of PROBA-V and Sentinel -1 on three periods (19 – 30 April 2017, 1 – 12 May 2017, and 13 – 24 May 2017).

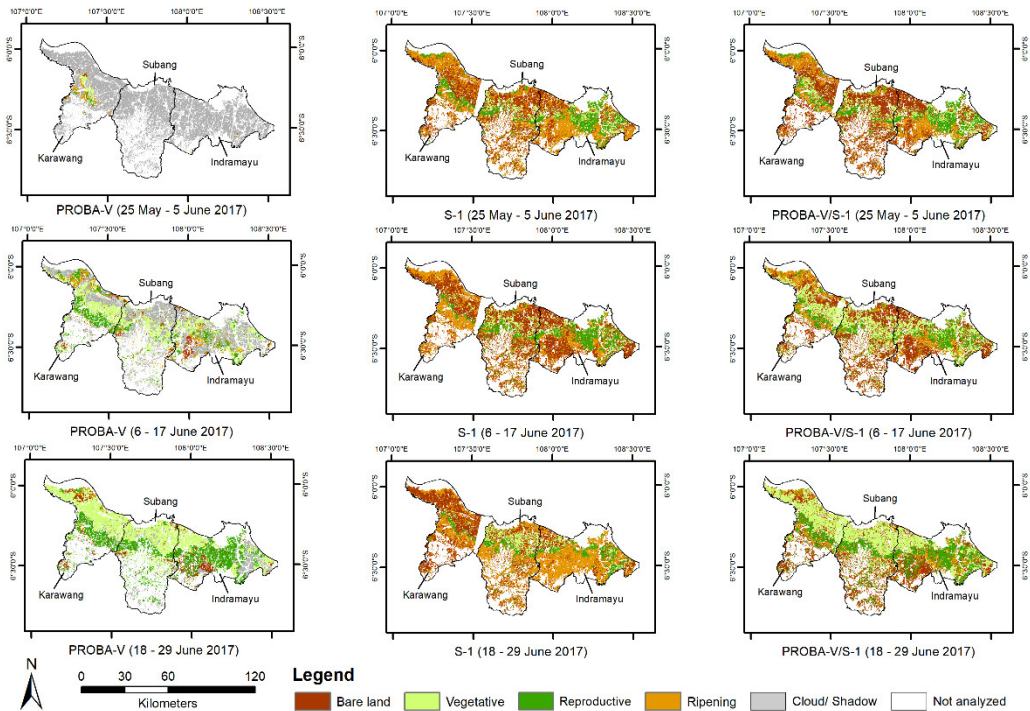


Figure S5. The rice growth stages map from PROBA-V, Sentinel-1, and the integration of PROBA-V and Sentinel -1 on three periods (25 May - 5 June 2017, 6 - 17 June 2017, and 18 - 29 June 2017).

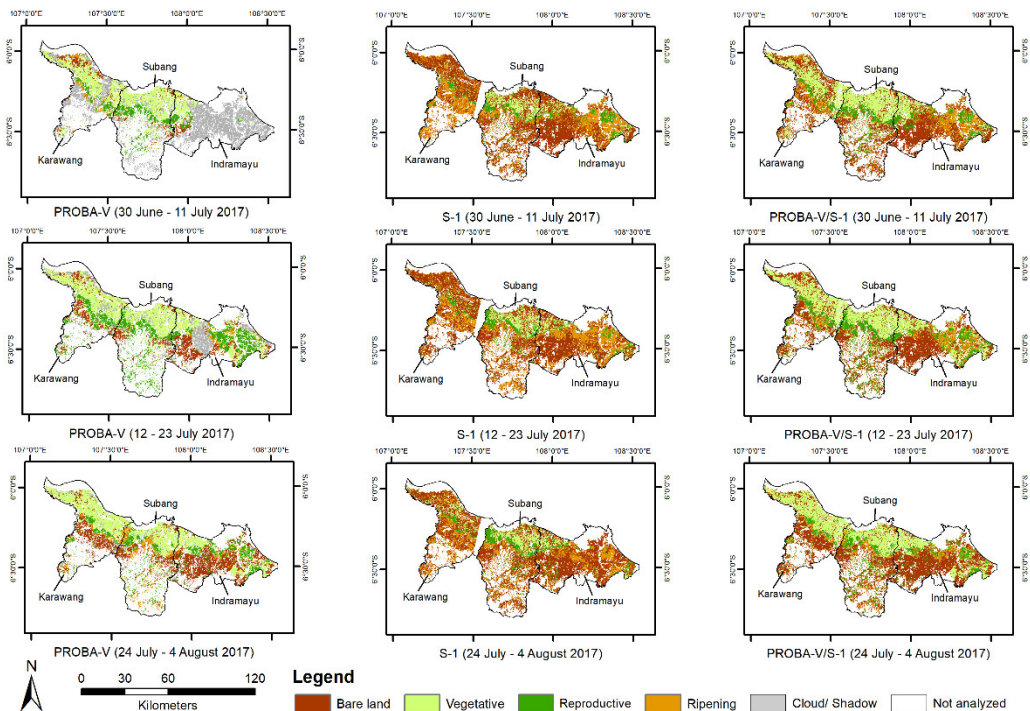


Figure S6. The rice growth stages map from PROBA-V, Sentinel-1, and the integration of PROBA-V and Sentinel -1 on three periods (30 June – 11 July 2017, 12 - 23 July 2017, and 24 July – 4 August 2017).

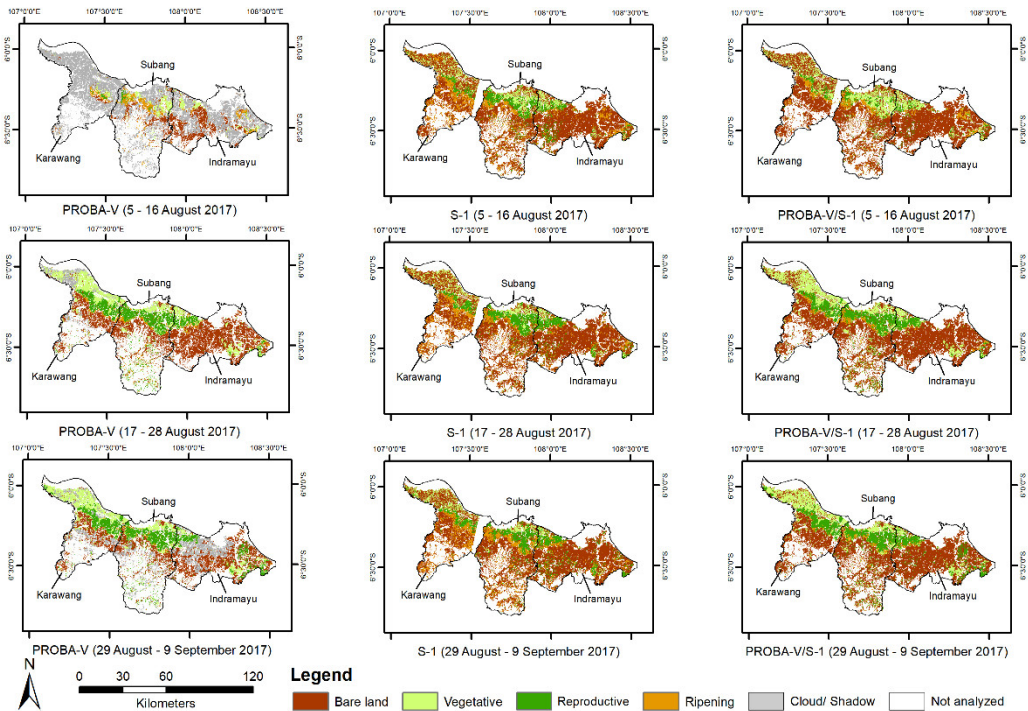


Figure S7. The rice growth stages map from PROBA-V, Sentinel-1, and the integration of PROBA-V and Sentinel -1 on three periods (5 – 16 August 2017, 17 - 28 August 2017, and 29 August – 9 September 2017).

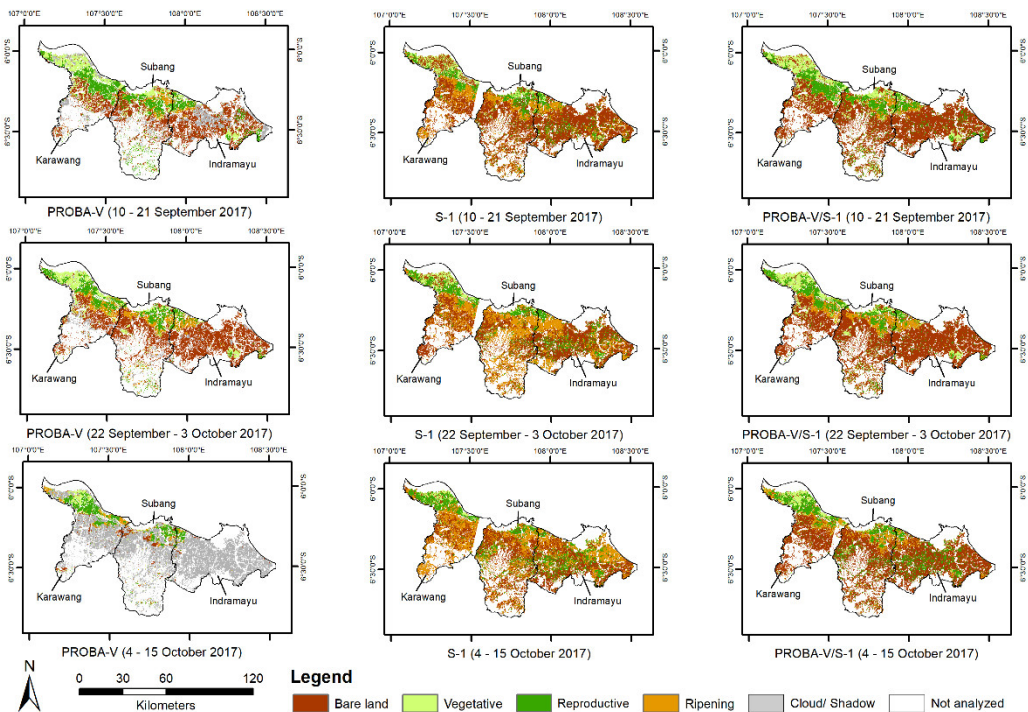


Figure S8. The rice growth stages map from PROBA-V, Sentinel-1, and the integration of PROBA-V and Sentinel-1 on three periods (10 - 21 September 2017, 22 September – 3 October 2017, and 4 - 15 October 2017)

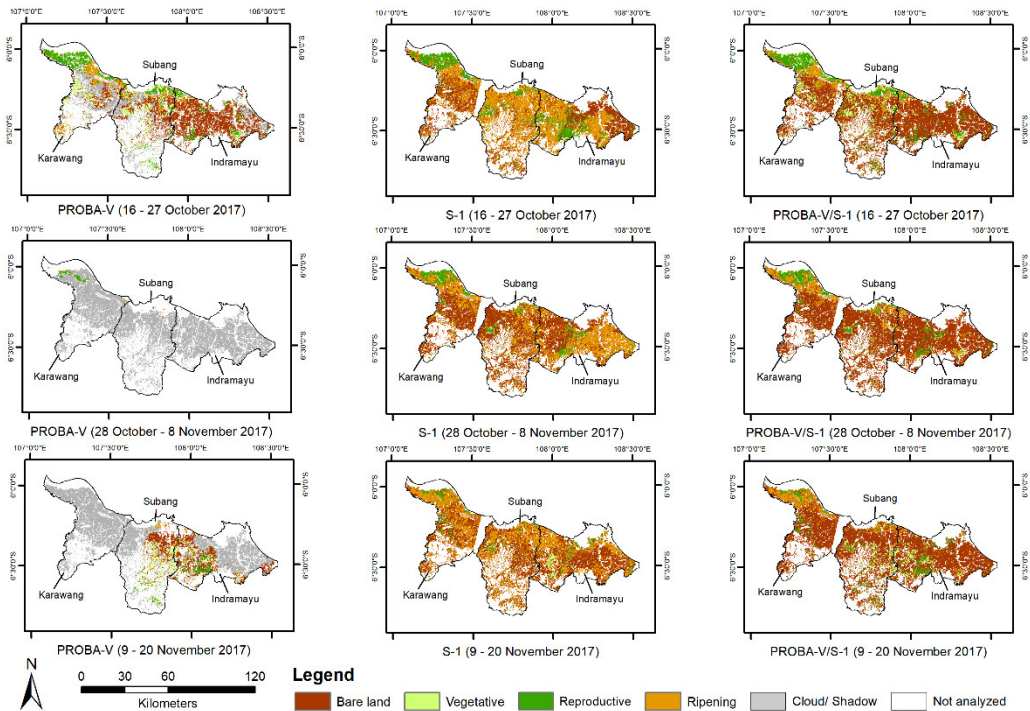


Figure S9. The rice growth stages map from PROBA-V, Sentinel-1, and the integration of PROBA-V and S-1 on three periods (16 – 27 October 2017, 28 October – 8 November 2017, and 9 – 20 November 2017).

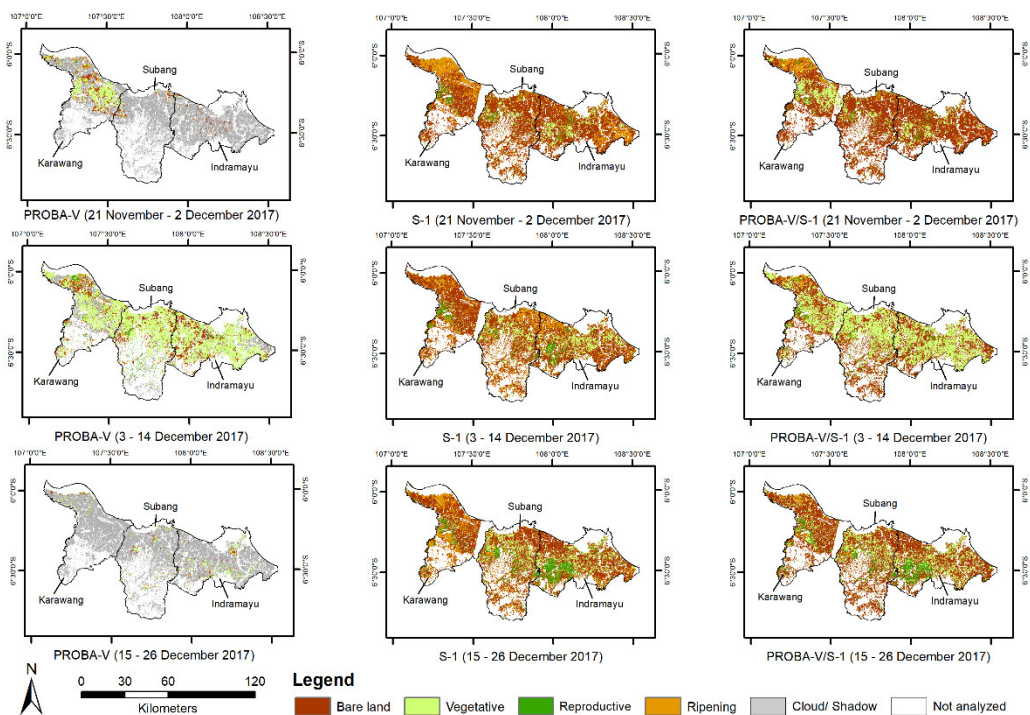


Figure S10. The rice growth stages map from PROBA-V, Sentinel-1, and the integration of PROBA-V and S-1 on three periods (21 November – 2 December 2017, 3 – 14 December 2017, and 15 – 26 December 2017).

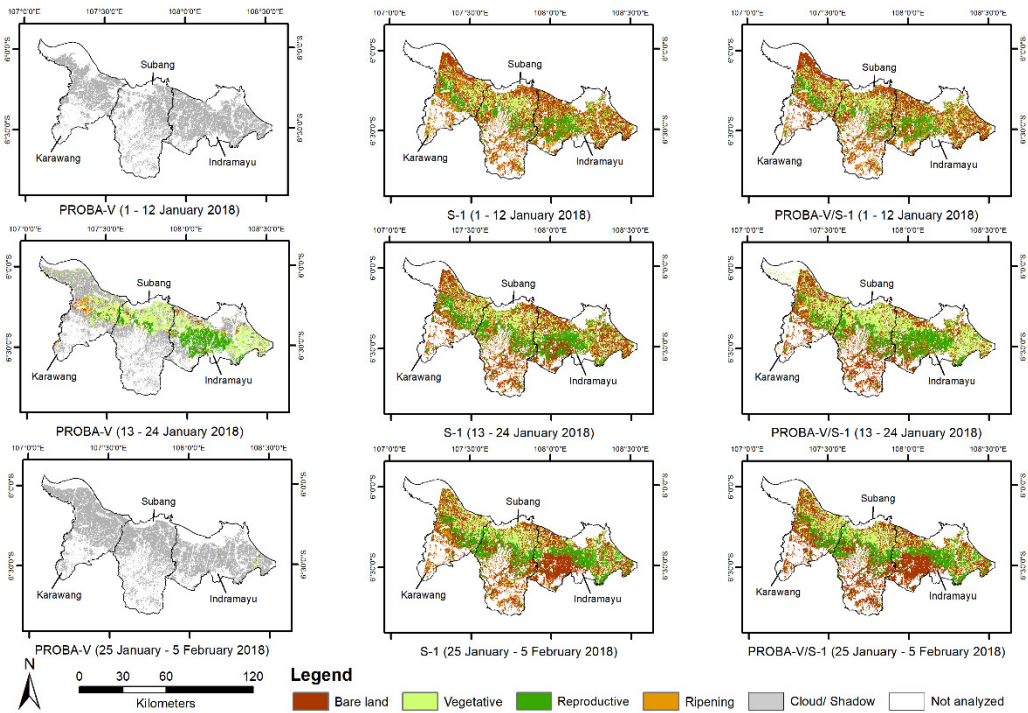


Figure S11. The rice growth stages map from PROBA-V, Sentinel-1, and the integration of PROBA-V and Sentinel -1 on three periods (1 - 12 January 2018, 13 - 24 January 2018, and 25 January - 5 February 2018).

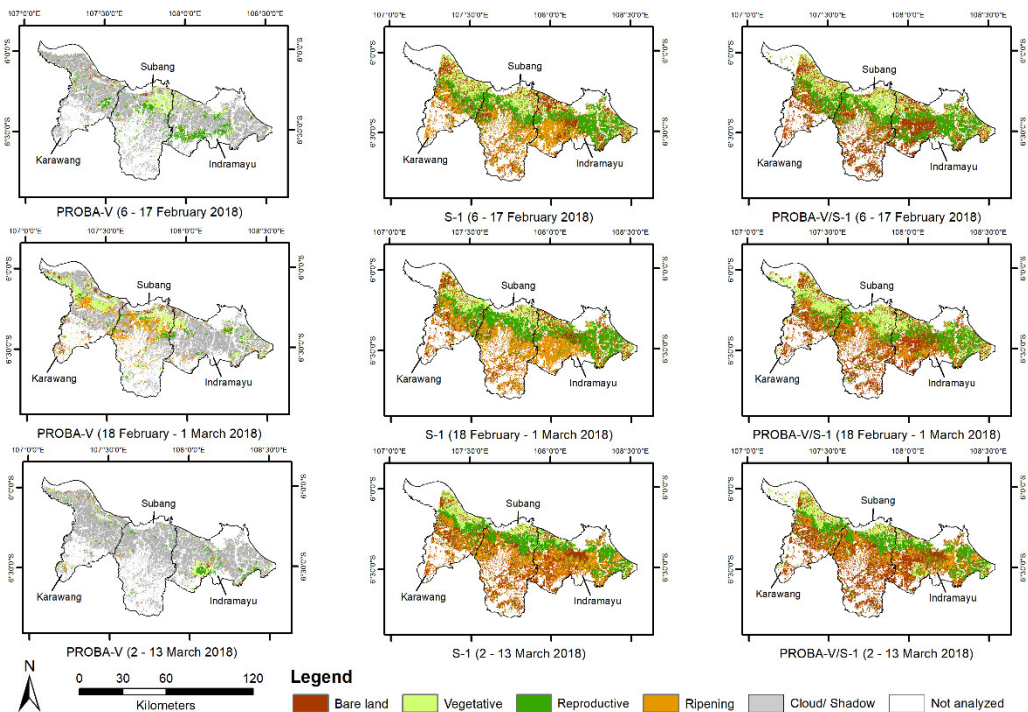


Figure S12. The rice growth stages map from PROBA-V, Sentinel-1, and the integration of PROBA-V and Sentinel -1 on three periods (6 – 17 February 2018, 18 February – 1 March 2018, and 2 – 13 March 2018).

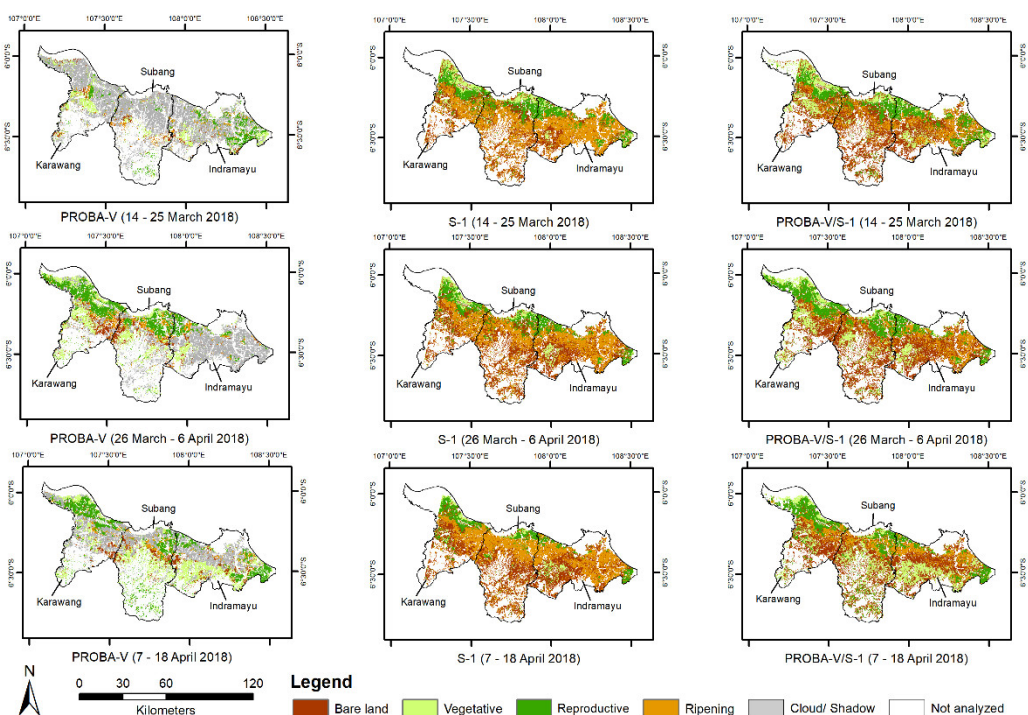


Figure S13. The rice growth stages map from PROBA-V, Sentinel-1, and the integration of PROBA-V and Sentinel -1 on three periods (14 – 15 March 2018, 16 March – 6 April 2018, and 7 – 18 April 2018)

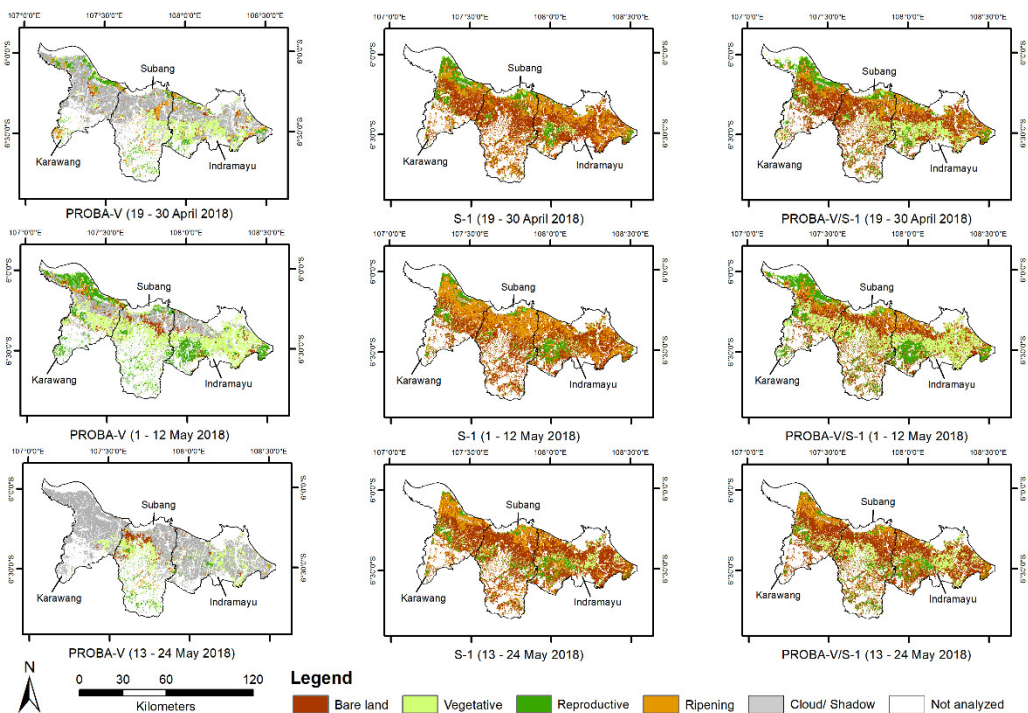


Figure S14. The rice growth stages map from PROBA-V, Sentinel-1, and the integration of PROBA-V and Sentinel -1 on three periods (19 - 30 April 2018, 1 -12 May 2018, and 13 – 24 May 2018).

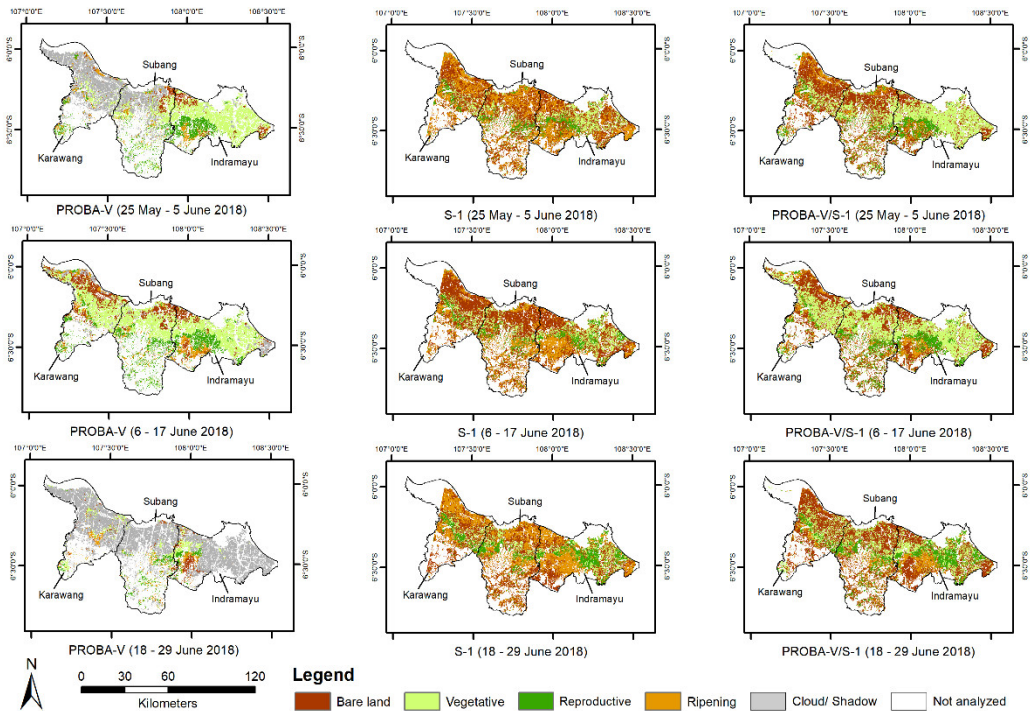


Figure S15. The rice growth stages map from PROBA-V, Sentinel-1, and the integration of PROBA-V and Sentinel -1 on three periods (25 May – 5 June 2018, 6 – 17 June 2018, and 18 – 29 June 2018).

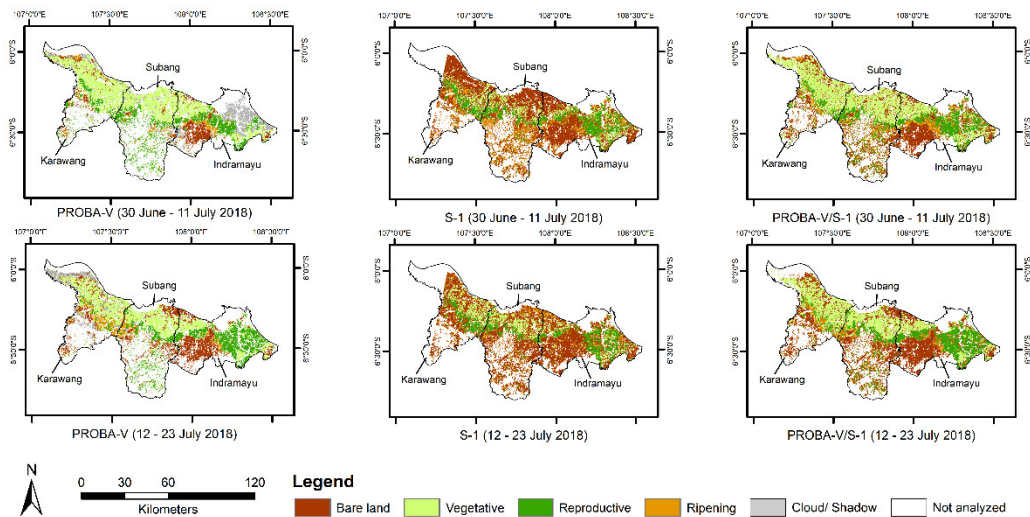


Figure S16. The rice growth stages map from PROBA-V, Sentinel-1, and the integration of PROBA-V and Sentinel -1 on two periods (30 June – 11 July 2018, and 12 – 23 July 2018).