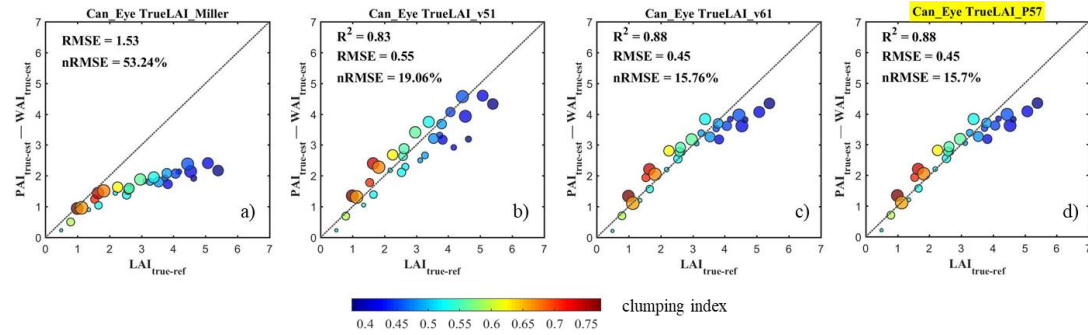
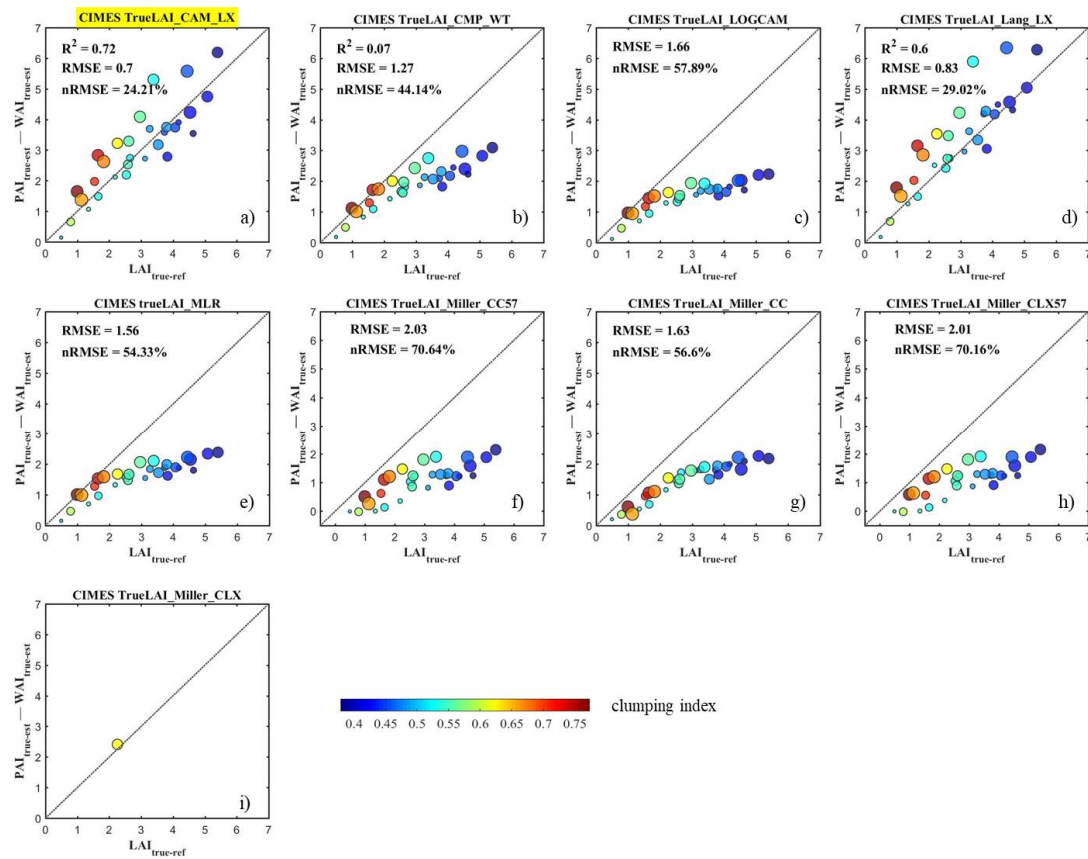


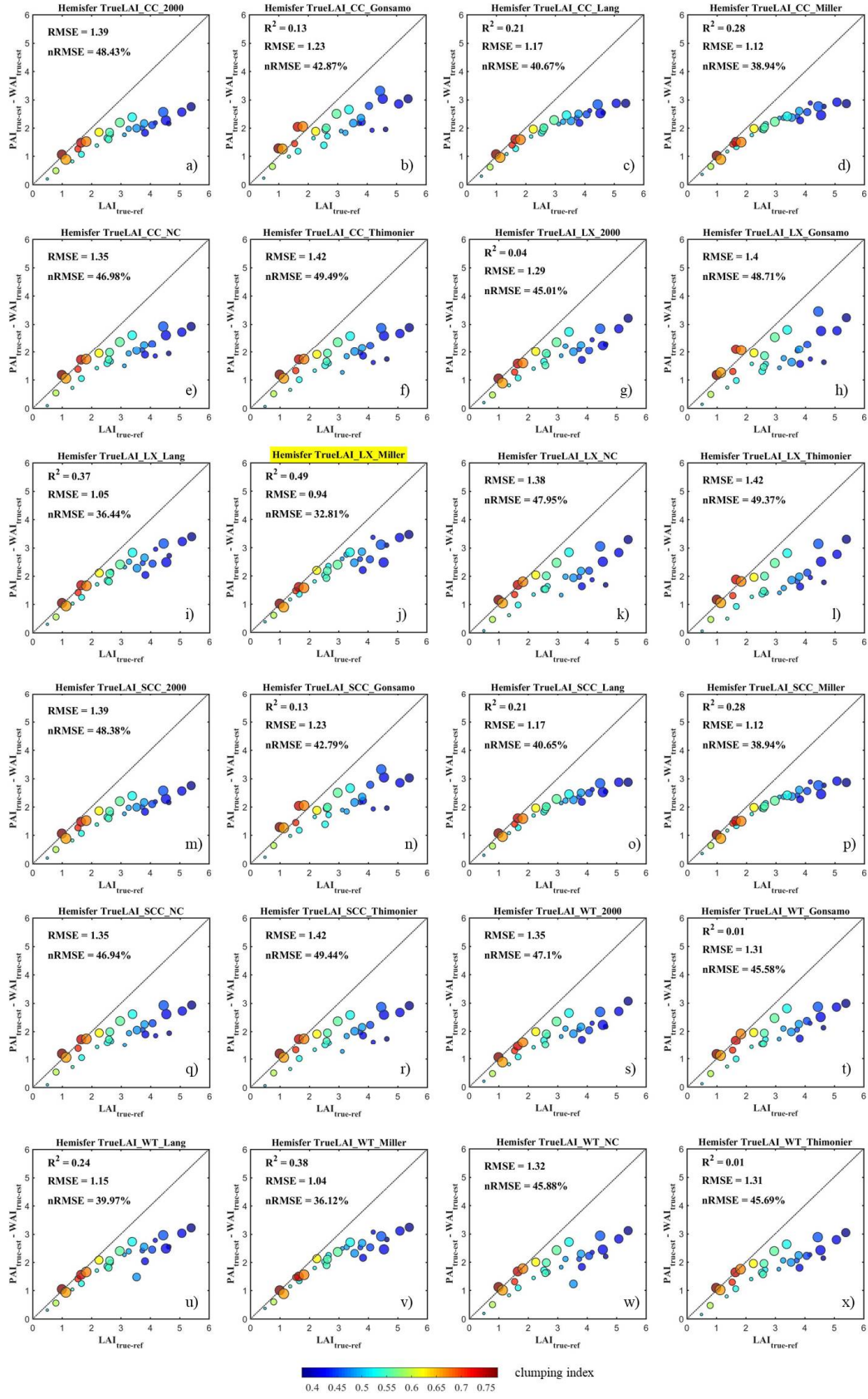
## 1. Results of $LAI_{true}$ ( $PAI_{true} - WAI_{true}$ ) estimation accuracy



**Figure S1.**  $LAI_{true}$  results using different algorithms from the Can\_Eye; The best result was highlighted. A smaller symbol indicating a smaller average leaf inclination angle (ALA) while a larger symbol indicating a higher ALA



**Figure S2.**  $LAI_{true}$  results using different algorithms from the CIMES; The best result was highlighted. A smaller symbol indicating a smaller average leaf inclination angle (ALA) while a larger symbol indicating a higher ALA. The Miller\_CLX method only produced leaf-off  $WAI$  estimates for 1 out of 30 plots.



**Figure S3.** LAI<sub>true</sub> results using different algorithms from the Hemisfer; The best result was highlighted. A smaller symbol indicating a smaller average leaf inclination angle (ALA) while a larger symbol indicating a higher ALA