

Evaluation of MODIS aerosol optical depth and surface data using an ensemble modeling approach to assess PM_{2.5} temporal and spatial distributions

Johana M. Carmona¹, Pawan Gupta^{2,3}, Diego F. Lozano-García¹, Ana Y. Vanoye¹, Iván Y. Hernández-Paniagua⁴ and Alberto Mendoza^{1*}

1 Tecnológico de Monterrey, Escuela de Ingeniería y Ciencias, Av. Eugenio Garza Sada 2501, Monterrey, N.L., México, 64849; johanamargarita@exatec.tec.mx (J.M.C); dflozano@tec.mx (D.F.L-G); avanoye@tec.mx (A.Y.V); mendoza.alberto@tec.mx (A.M.D)

2 Science and Technology Institute, Universities Space Research Association (USRA), Huntsville, AL 35806, USA.

3 NASA Marshall Space Flight Center, Huntsville, AL 35805, USA; pawan.gupta@nasa.gov

4 Universidad Nacional Autónoma de México, Centro de Ciencias de la Atmósfera, Circuito Investigación Científica S/N, C.U., Coyoacán, Ciudad de México, México, 04510; ivan.hernandez@atmosfera.unam.mx

* Correspondence: mendoza.alberto@tec.mx; Tel.: +52-81 8358-2000 ext. 5219

SUPPLEMENTARY MATERIAL

CONTENT:

Figure S1. Seasonal distribution of the Normalized Difference Vegetation Index (NDVI) in Domain 3 for the period of 2010–2017.

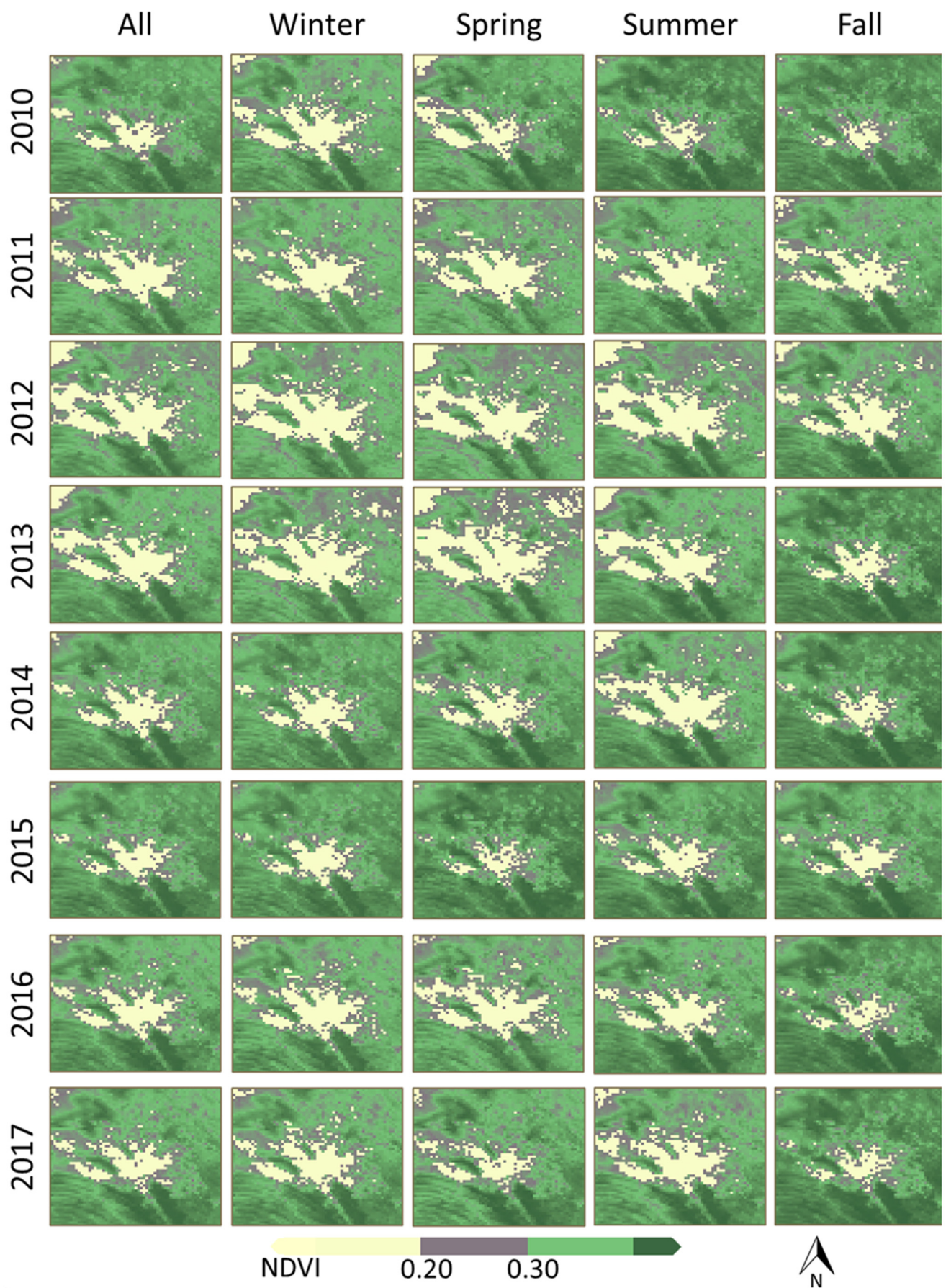


Figure S1. Seasonal distribution of the Normalized Difference Vegetation Index (NDVI) in Domain 3 for the period of 2010–2017.