

Supplementary material

Climatology of Planetary Boundary Layer Height-Controlling Meteorological Parameters over the Korean Peninsula

Shaik Allabakash and Sanghun Lim *

Korea Institute of Civil Engineering and Building Technology, Ilsan 10223, South Korea; shaik@kict.re.kr

* Correspondence: slim@kict.re.kr

Contents of this file

Figures S1 to S5

Introduction

Figure S1. Spatial distribution of average surface temperature from 2008 to 2017: a) 09:00 LT, b) 15:00 LT, c) 21:00 LT, and d) 03:00 LT.

Figure S2. Spatial distribution of average surface relative humidity from 2008 to 2017: a) 09:00 LT, b) 15:00 LT, c) 21:00 LT, and d) 03:00 LT.

Figure S3. Spatial distribution of average 10-m wind speed from 2008 to 2017: a) 09:00 LT, b) 15:00 LT, c) 21:00 LT, and d) 03:00 LT.

Figure S4. Spatial distribution of average LTS from 2008 to 2017: a) 09:00 LT, b) 15:00 LT, c) 21:00 LT, and d) 03:00 LT.

Figure S5. Spatial distribution of average Bowen ratio from 2008 to 2017: a) 09:00 LT, b) 15:00 LT, c) 21:00 LT, and d) 03:00 LT.

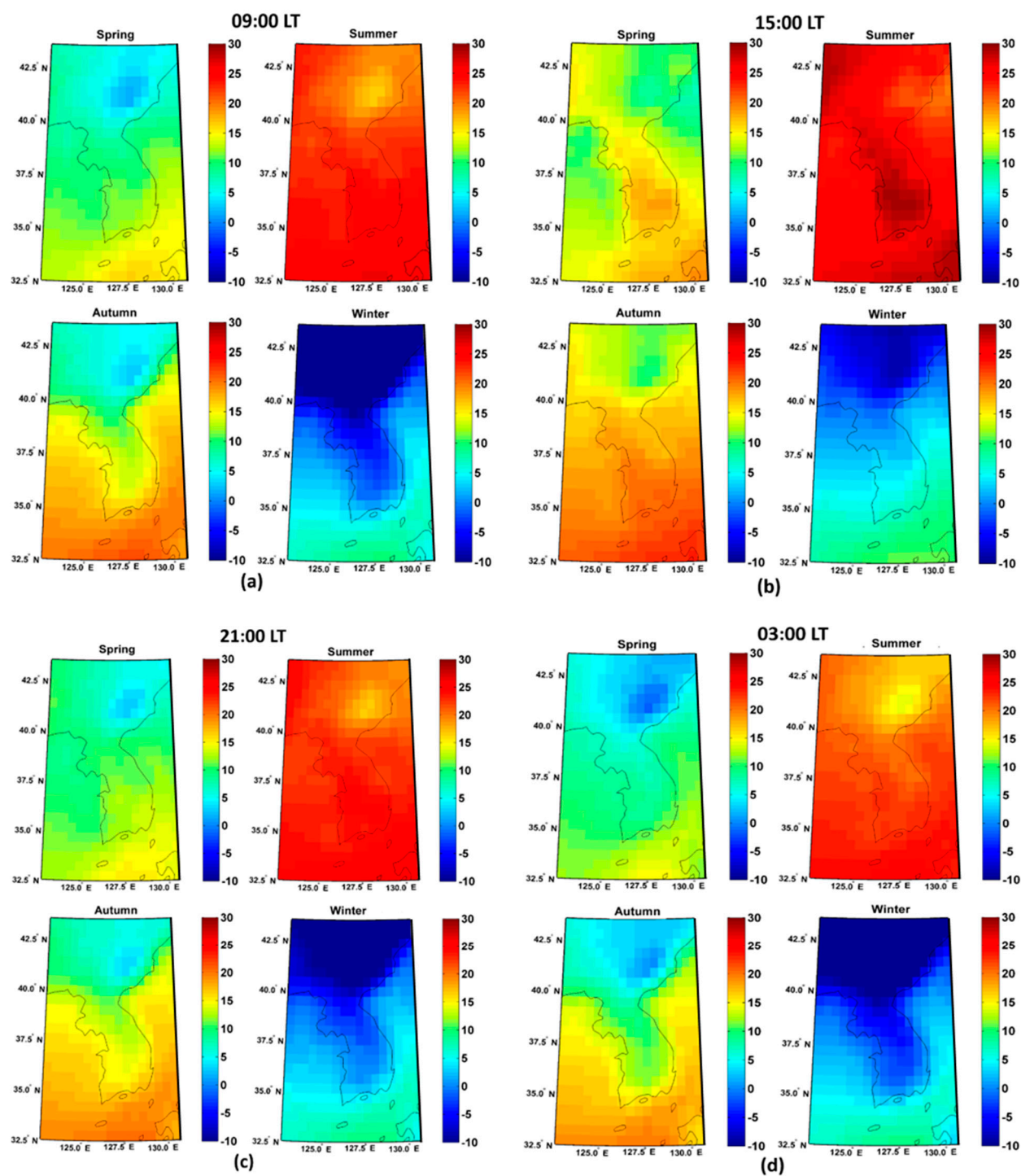


Figure S1. Spatial distribution of average surface temperature from 2008 to 2017: a) 09:00 LT, b) 15:00 LT, c) 21:00 LT, and d) 03:00 LT.

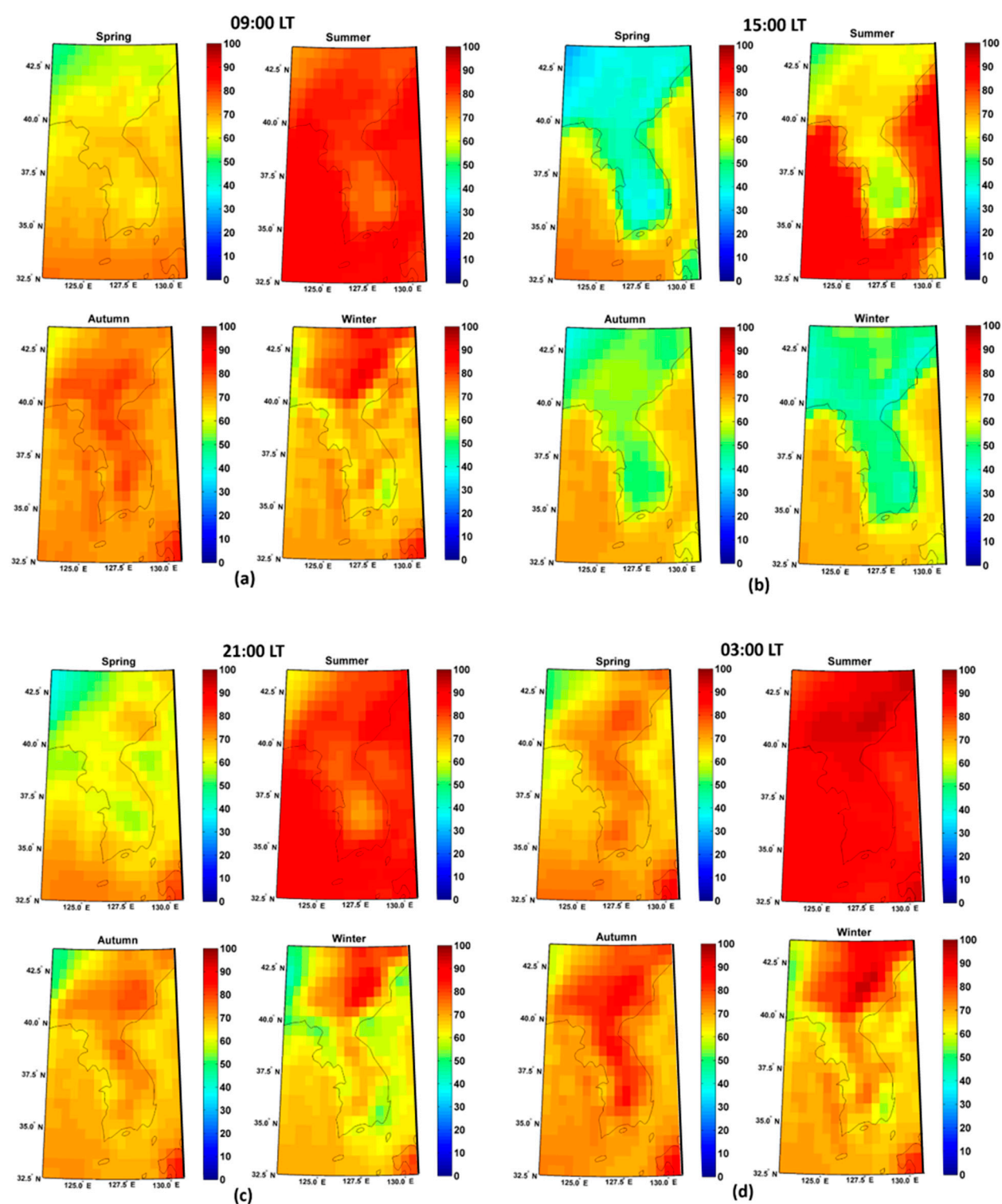


Figure S2. Spatial distribution of average surface relative humidity from 2008 to 2017: a) 09:00 LT, b) 15:00 LT, c) 21:00 LT, and d) 03:00 LT.

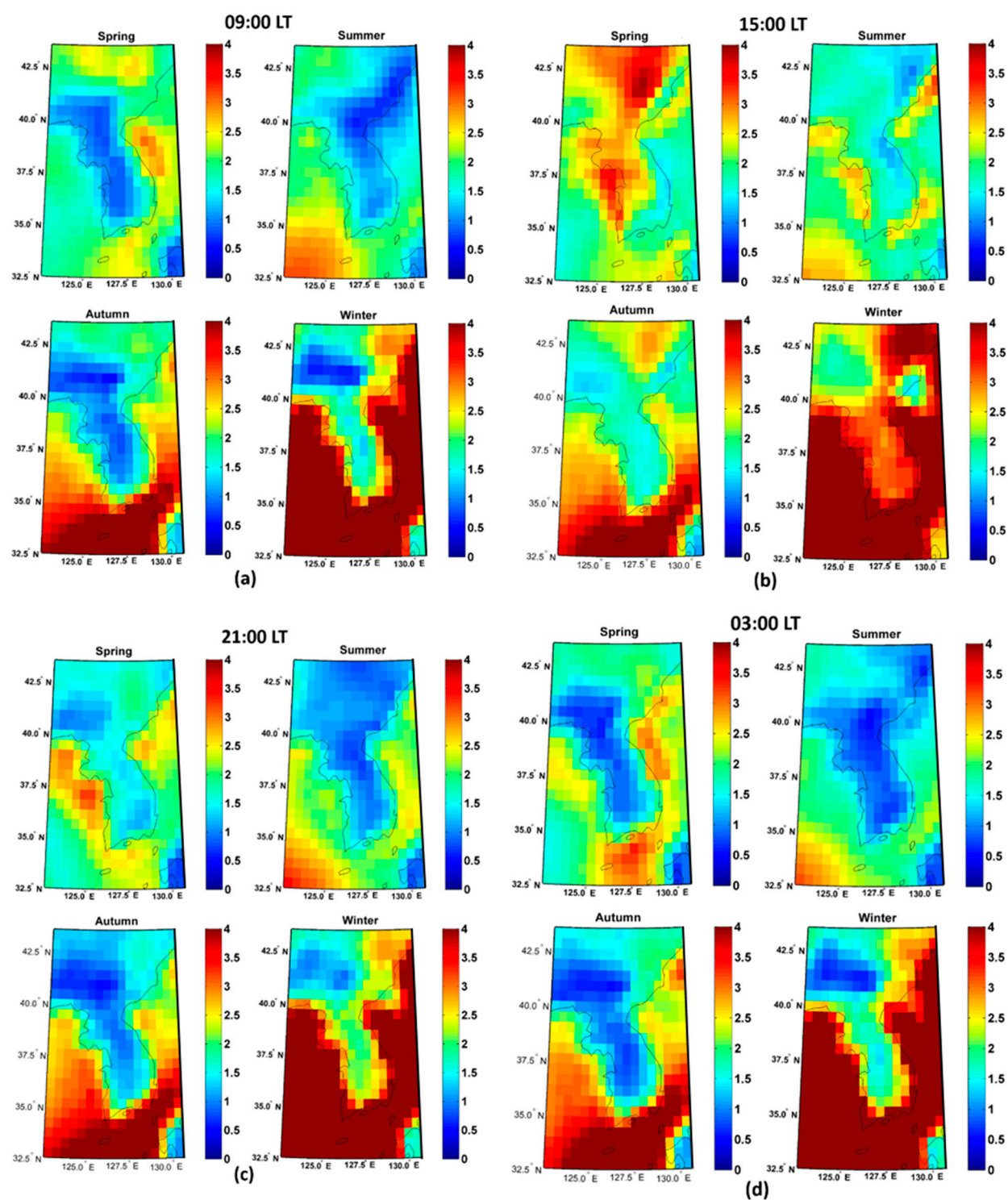


Figure S3. Spatial distribution of average 10-m wind speed from 2008 to 2017: a) 09:00 LT, b) 15:00 LT, c) 21:00 LT, and d) 03:00 LT.

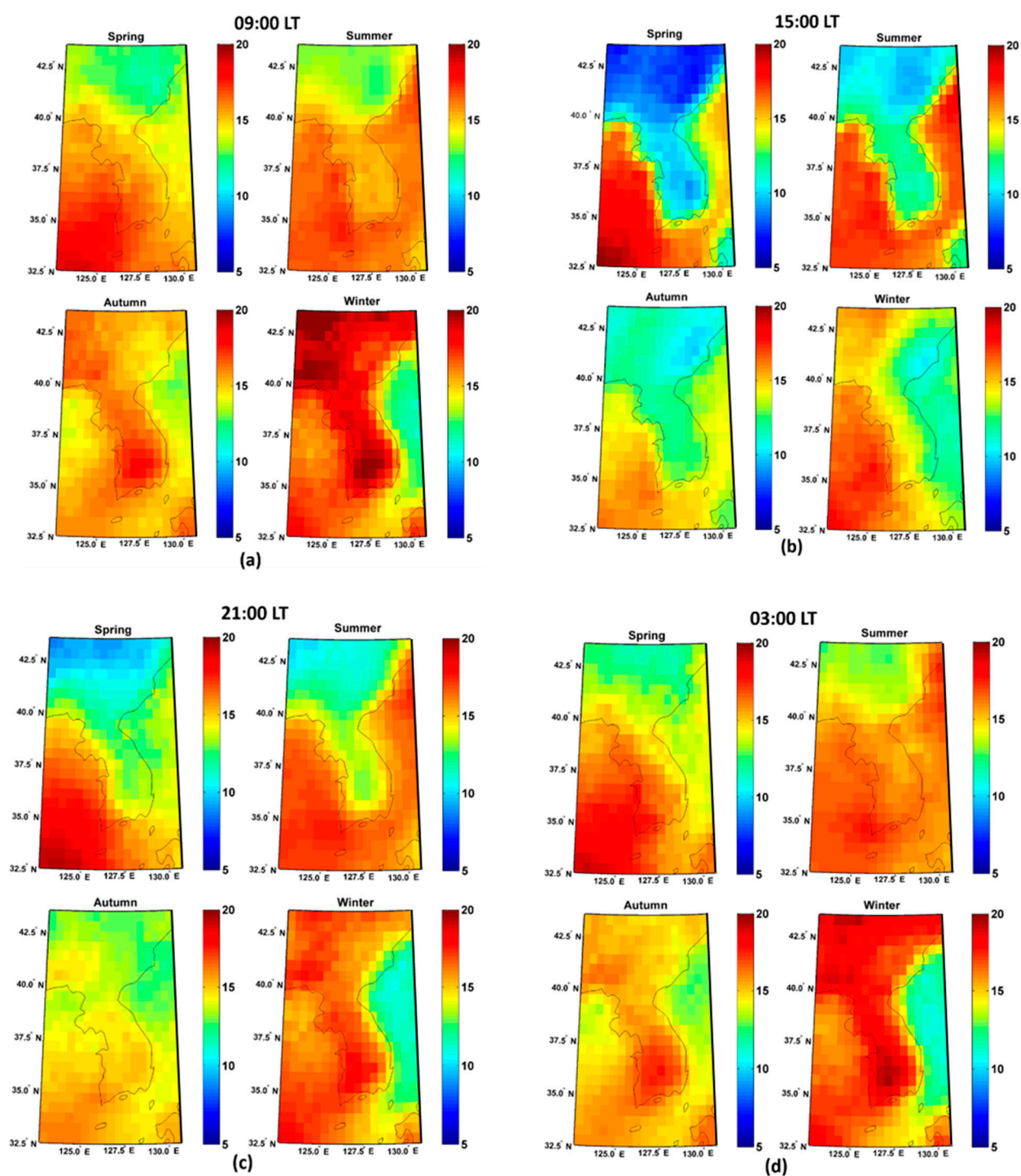


Figure S4. Spatial distribution of average LTS from 2008 to 2017: a) 09:00 LT, b) 15:00 LT, c) 21:00 LT, and d) 03:00 LT.

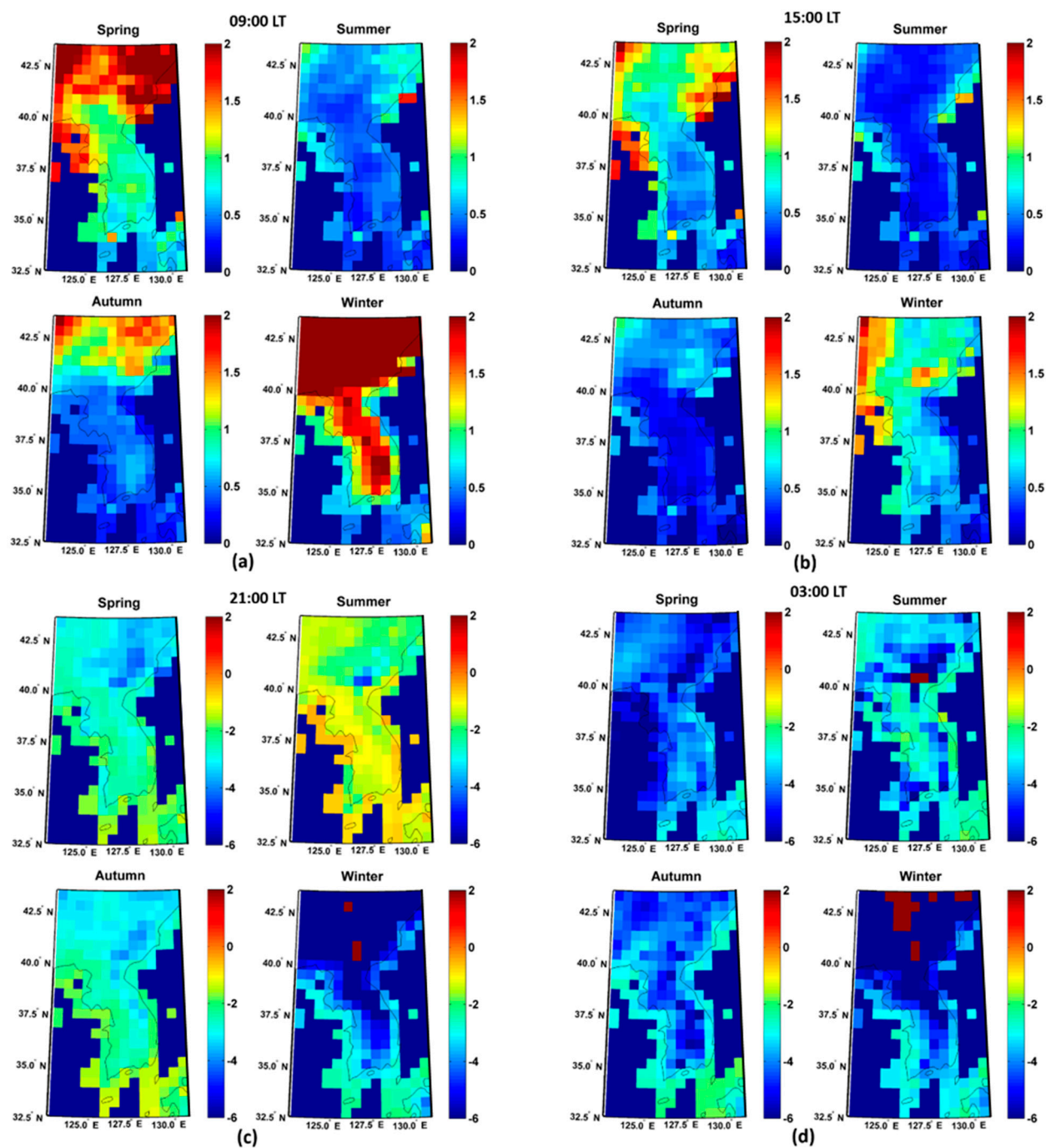


Figure S5. Spatial distribution of average Bowen ratio over the land from 2008 to 2017: a) 09:00 LT, b) 15:00 LT, c) 21:00 LT, and d) 03:00 LT.

