

Figure S1. Spatial distribution of the seasonally averaged daily mean air temperatures for 2003–2013 in spring (a), summer (b), autumn (c), winter (d) and the full year (e).

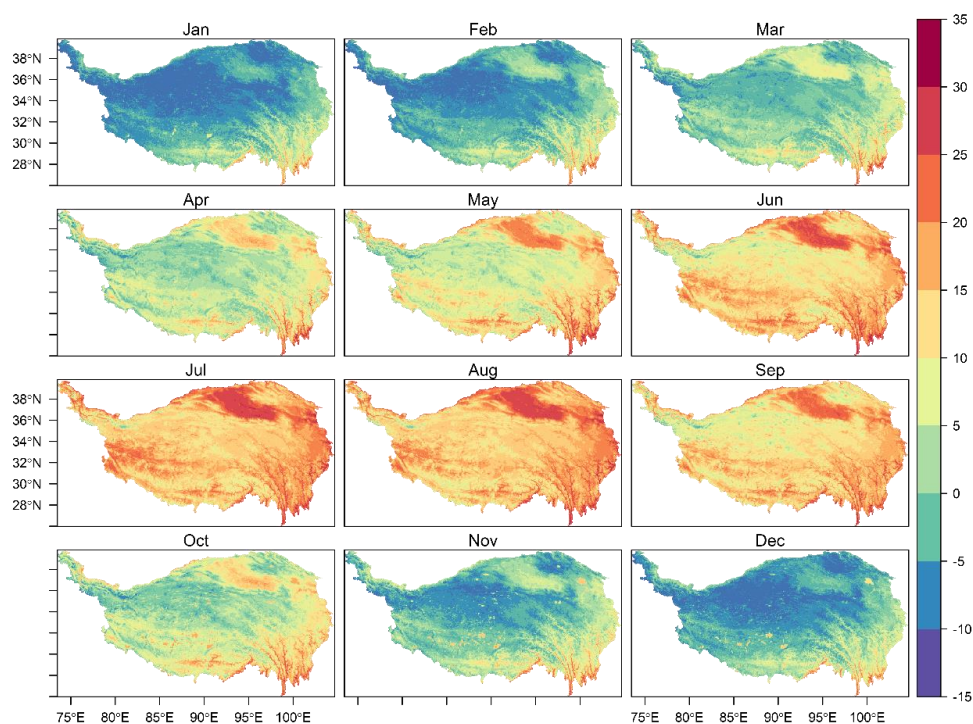


Figure S2. Monthly Maximum temperature derived from RF between 2003 and 2013.

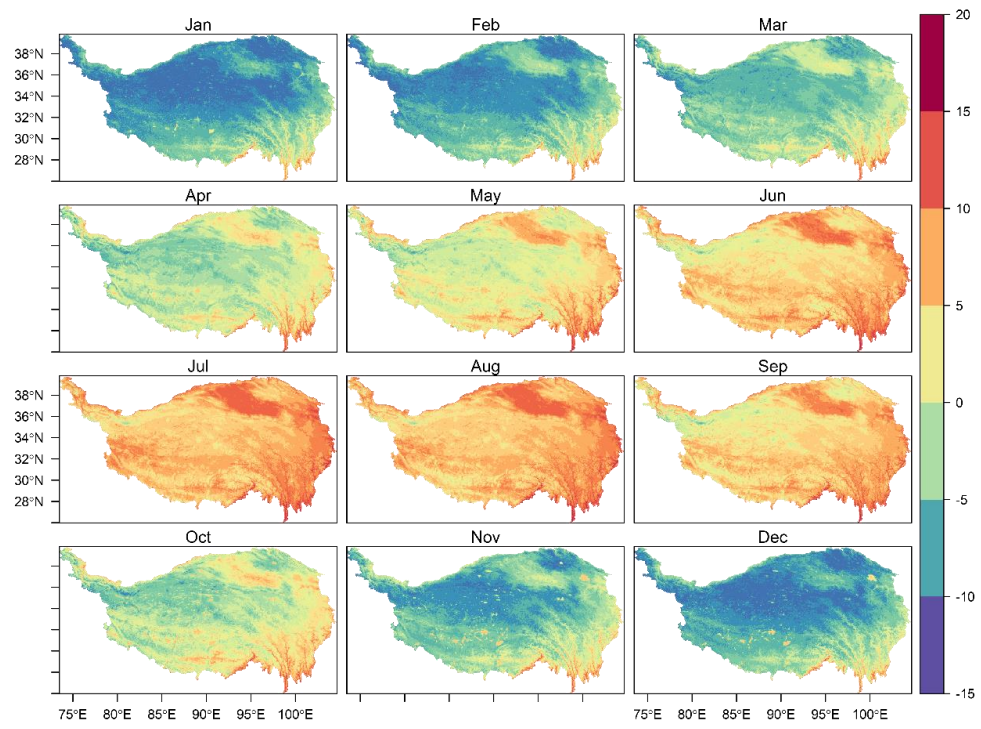


Figure S3. Monthly Minimum temperature derived from RF between 2003 and 2013.