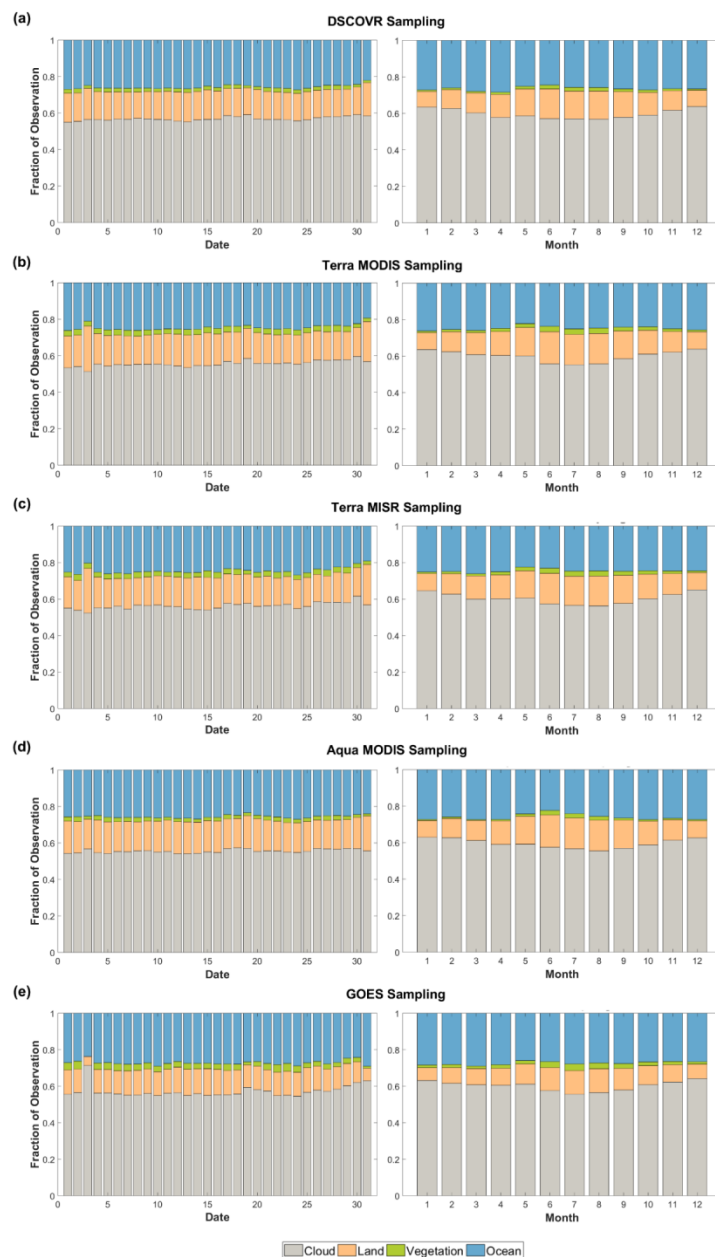
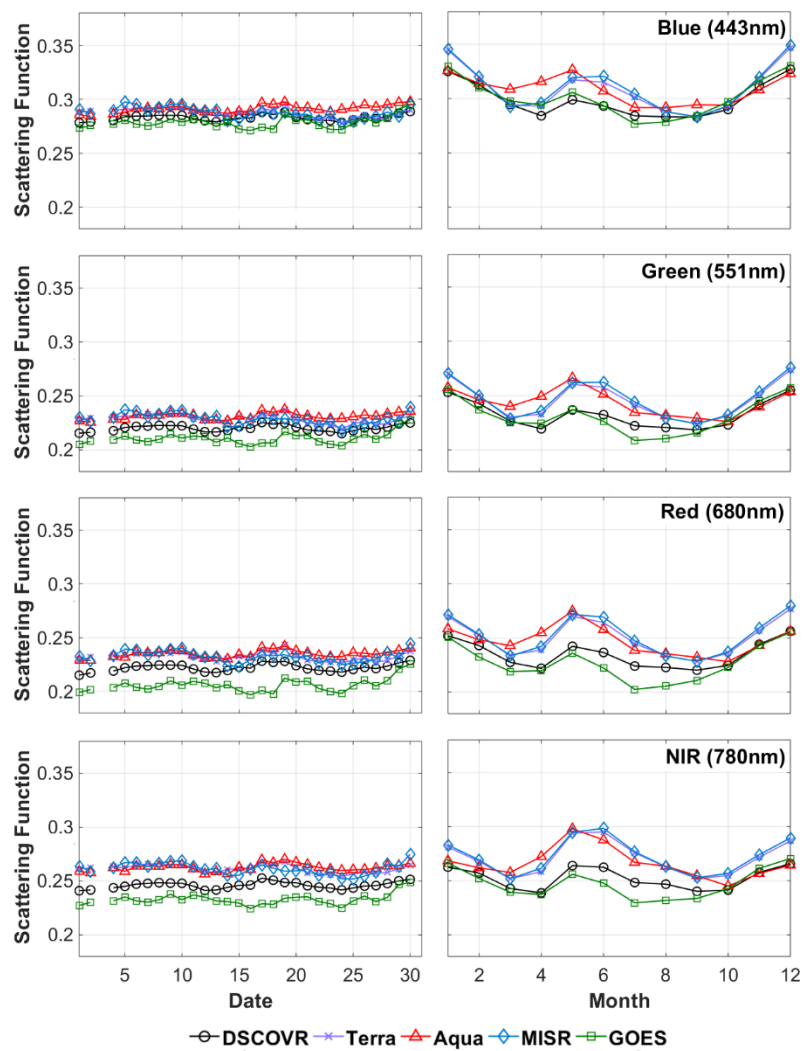


# Supplementary Materials: Implications of Whole-Disc DSCOVR EPIC Spectral Observations for Estimating Earth's Spectral Reflectivity Based on Low-Earth-Orbiting and Geostationary Observations

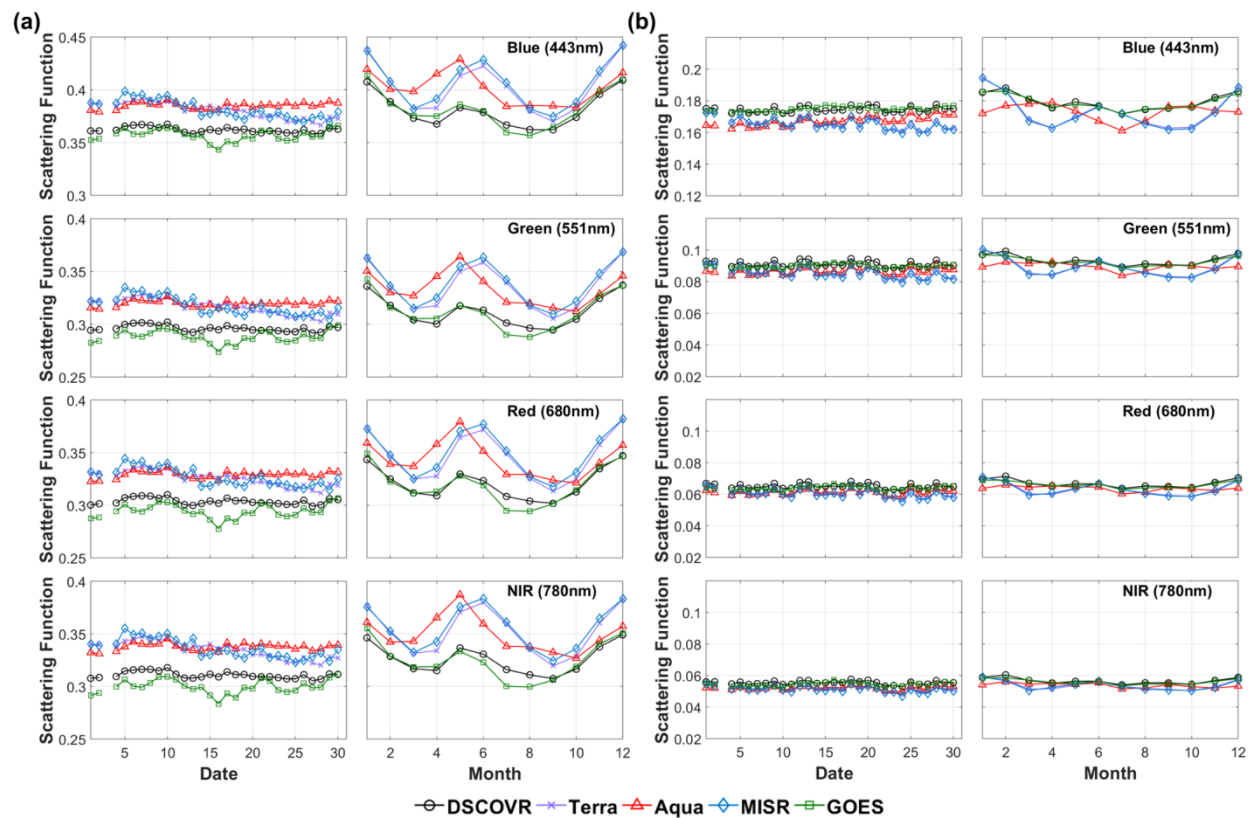
Wanjuan Song, Yuri Knyazikhin, Guoyong Wen, Alexander Marshak, Matti Möttöus, Kai Yan, Bin Yang, Baodong Xu, Taejin Park, Chi Chen, Yelu Zeng, Guangjian Yan, Xihan Mu, and Ranga B. Myneni



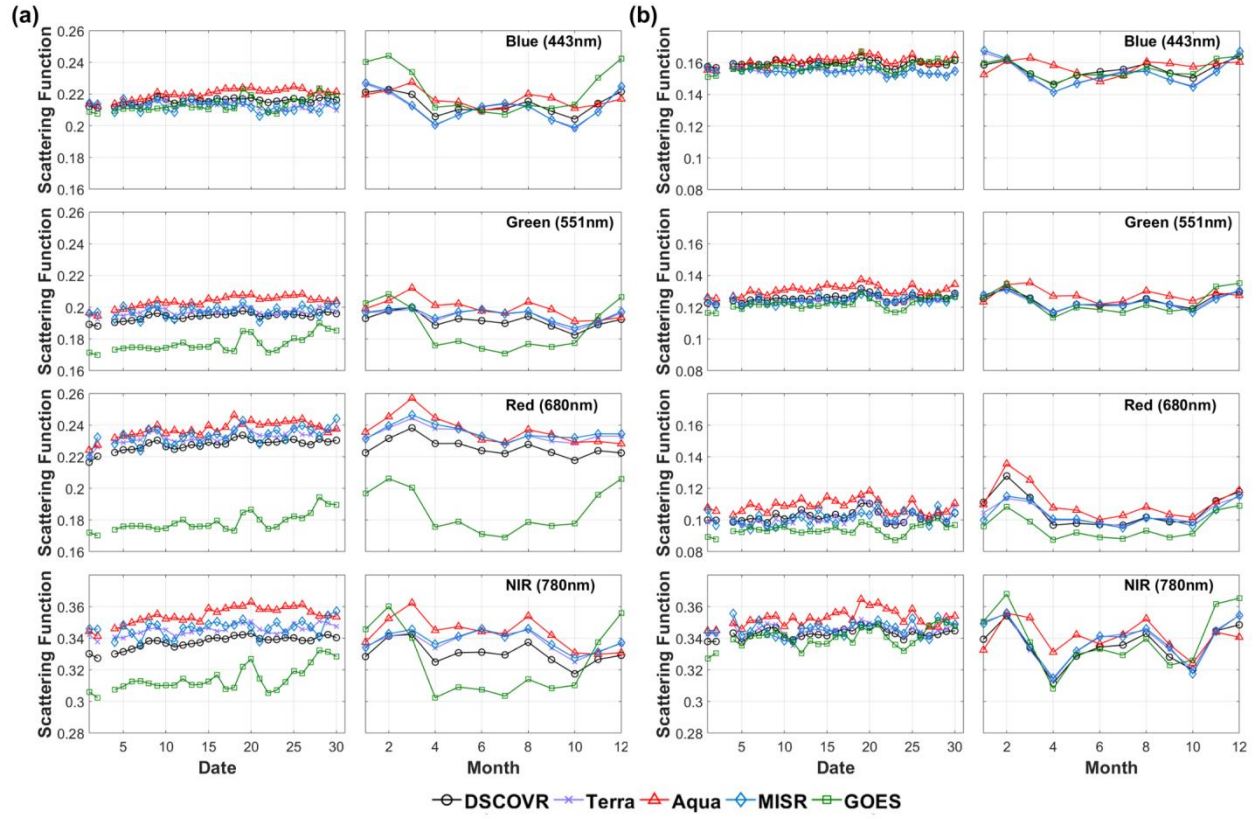
**Figure S1.** Daily (left column) and monthly (right column) average reflector type fractions for (a) EPIC, (b) Terra MODIS, (c) Terra MISR, (d) Aqua MODIS and (e) GOES samplings in August 2016 and the entire Year 2016.



**Figure S2.** Daily (left column) and monthly (right column) average scattering function for EPIC, Terra MODIS and MISR, Aqua MODIS and GOES samplings for August 2016 and the entire Year 2016.



**Figure S3.** Daily and monthly average scattering functions over clouds (a) and cloud-free ocean (b) for EPIC, Terra MODIS and MISR, Aqua MODIS and GEOS samplings for August 2016 and the entire Year 2016.



**Figure S4.** Daily and monthly average scattering functions over cloud-free land (a) and vegetation (b) for EPIC, Terra MODIS and MISR, Aqua MODIS and GEOS samplings for August 2016 and the entire Year 2016.