

**Table S1.** Summary of the variables included in each block of indicators latent variables (inner model) and manifest variables (outer model) of the conceptual path model for the study area.

Latent variable	Class (Integrated indices)	Manifest variable	Type of Model	Data source
Pressures	Demographic	Population (inhabitants/yr)	Formative	<a href="https://www.juntadeandalucia.es/institutodeestadisticaycartografia/anuario/anuario99/index.htm">https://www.juntadeandalucia.es/institutodeestadisticaycartografia/anuario/anuario99/index.htm</a> <a href="https://www.ine.es/ss/Satellite?L=es_ES&amp;c=Page&amp;cid=1254735038429&amp;p=1254735038429&amp;pagename=IOEhist%2FIOEhistLayout&amp;param1=1&amp;param2=67000000">https://www.ine.es/ss/Satellite?L=es_ES&amp;c=Page&amp;cid=1254735038429&amp;p=1254735038429&amp;pagename=IOEhist%2FIOEhistLayout&amp;param1=1&amp;param2=67000000</a>
Pressures	Economic	Per capita fish consumption (kg/inhabitants)*	Formative	<a href="https://www.mapa.gob.es/app/consumo-en-hogares/resultado1.asp">https://www.mapa.gob.es/app/consumo-en-hogares/resultado1.asp</a> <a href="https://www.mapa.gob.es/es/estadistica/temas/publicaciones/anuario-de-estadistica">https://www.mapa.gob.es/es/estadistica/temas/publicaciones/anuario-de-estadistica</a> <a href="https://www.mapa.gob.es/es/alimentacion/temas/consumo-tendencias/panel-de-consumo-alimentario/series-anuales/">https://www.mapa.gob.es/es/alimentacion/temas/consumo-tendencias/panel-de-consumo-alimentario/series-anuales/</a>
Pressures	Economic	Fish per capita spending (€/inhabitants)*	Formative	<a href="https://www.mapa.gob.es/app/consumo-en-hogares/resultado1.asp">https://www.mapa.gob.es/app/consumo-en-hogares/resultado1.asp</a> <a href="https://www.mapa.gob.es/es/estadistica/temas/publicaciones/anuario-de-estadistica">https://www.mapa.gob.es/es/estadistica/temas/publicaciones/anuario-de-estadistica</a> <a href="https://www.mapa.gob.es/es/alimentacion/temas/consumo-tendencias/panel-de-consumo-alimentario/series-anuales/">https://www.mapa.gob.es/es/alimentacion/temas/consumo-tendencias/panel-de-consumo-alimentario/series-anuales/</a>
Pressures	Cultural	n° advertisements promoting fish consumption*	Formative	<a href="http://www.alimentacion.es/es/campanas/pescados/">http://www.alimentacion.es/es/campanas/pescados/</a> <a href="https://www.juntadeandalucia.es/export/drupaljda/HISTORICO_WEB.pdf">https://www.juntadeandalucia.es/export/drupaljda/HISTORICO_WEB.pdf</a> <a href="https://www.juntadeandalucia.es/organismos/agriculturaganaderiapescaydesarrollosostenible/areas/pescaacuicultura/comercializacion/paginas/informe-promocion.html">https://www.juntadeandalucia.es/organismos/agriculturaganaderiapescaydesarrollosostenible/areas/pescaacuicultura/comercializacion/paginas/informe-promocion.html</a> <a href="https://www.alimentosdespana.es/es/campanas/ultimas-campanas/pescados-moluscos-crustaceos/pescados/default.aspx">https://www.alimentosdespana.es/es/campanas/ultimas-campanas/pescados-moluscos-crustaceos/pescados/default.aspx</a>







Latent variable	Class (Integrated indices)	Manifest variable	Type of Model	Data source
Cultural ecosystem service	Artisanal fishery	n° artisanal vessels	Reflective	<a href="http://www.juntadeandalucia.es/organismos/agriculturapesca/develop/indicadores/indicadores-de-sostenibilidad-de-ecosistemas-culturales-y-servicios-ecosistemicos-de-pesca-y-aquicultura-artesanal">http://www.juntadeandalucia.es/organismos/agriculturapesca/develop/indicadores/indicadores-de-sostenibilidad-de-ecosistemas-culturales-y-servicios-ecosistemicos-de-pesca-y-aquicultura-artesanal</a> <a href="https://www.mapama.gob.es/es/pesca/temas/indicadores-de-sostenibilidad-de-ecosistemas-culturales-y-servicios-ecosistemicos-de-pesca-y-aquicultura-artesanal">https://www.mapama.gob.es/es/pesca/temas/indicadores-de-sostenibilidad-de-ecosistemas-culturales-y-servicios-ecosistemicos-de-pesca-y-aquicultura-artesanal</a> <a href="https://www.ige.eu/web/mostrador_actividades_estadisticas.jsp?idioma=gl&amp;codigo=0301004">https://www.ige.eu/web/mostrador_actividades_estadisticas.jsp?idioma=gl&amp;codigo=0301004</a>
Cultural ecosystem service	Artisanal fishery	Gross tonnage of artisanal vessels	Reflective	<a href="http://www.juntadeandalucia.es/organismos/agriculturapesca/develop/indicadores/indicadores-de-sostenibilidad-de-ecosistemas-culturales-y-servicios-ecosistemicos-de-pesca-y-aquicultura-artesanal">http://www.juntadeandalucia.es/organismos/agriculturapesca/develop/indicadores/indicadores-de-sostenibilidad-de-ecosistemas-culturales-y-servicios-ecosistemicos-de-pesca-y-aquicultura-artesanal</a> <a href="https://www.mapama.gob.es/es/pesca/temas/indicadores-de-sostenibilidad-de-ecosistemas-culturales-y-servicios-ecosistemicos-de-pesca-y-aquicultura-artesanal">https://www.mapama.gob.es/es/pesca/temas/indicadores-de-sostenibilidad-de-ecosistemas-culturales-y-servicios-ecosistemicos-de-pesca-y-aquicultura-artesanal</a> <a href="https://www.ige.eu/web/mostrador_actividades_estadisticas.jsp?idioma=gl&amp;codigo=0301004">https://www.ige.eu/web/mostrador_actividades_estadisticas.jsp?idioma=gl&amp;codigo=0301004</a>
Cultural ecosystem service	Artisanal fishery	Total power of artisanal fisheries vessels (kW)	Reflective	<a href="http://www.juntadeandalucia.es/organismos/agriculturapesca/develop/indicadores/indicadores-de-sostenibilidad-de-ecosistemas-culturales-y-servicios-ecosistemicos-de-pesca-y-aquicultura-artesanal">http://www.juntadeandalucia.es/organismos/agriculturapesca/develop/indicadores/indicadores-de-sostenibilidad-de-ecosistemas-culturales-y-servicios-ecosistemicos-de-pesca-y-aquicultura-artesanal</a> <a href="https://www.mapama.gob.es/es/pesca/temas/indicadores-de-sostenibilidad-de-ecosistemas-culturales-y-servicios-ecosistemicos-de-pesca-y-aquicultura-artesanal">https://www.mapama.gob.es/es/pesca/temas/indicadores-de-sostenibilidad-de-ecosistemas-culturales-y-servicios-ecosistemicos-de-pesca-y-aquicultura-artesanal</a> <a href="https://www.ige.eu/web/mostrador_actividades_estadisticas.jsp?idioma=gl&amp;codigo=0301004">https://www.ige.eu/web/mostrador_actividades_estadisticas.jsp?idioma=gl&amp;codigo=0301004</a>
Regulating ecosystem service	Marine Trophic Index (MTI)	MTI*(deleted only in the Gulf of Cádiz)	Reflective	<a href="#">INDEX, M. T. (2004). Convention on biological diversity. Science, 279, 860-863.</a> <a href="#">Mace, G., Delbaere, B., &amp; Hanski, I. (2005). A user's guide to biodiversity indicators. European Academy of Sciences Advisory Council (<a href="http://www.easac.org/EASACBioindicator.pdf">http://www.easac.org/EASACBioindicator.pdf</a>).</a>
Regulating ecosystem service	Primary productivity required (PPR)	PPR	Reflective	<a href="#">Watson, R., Zeller, D., &amp; Pauly, D. (2014). Primary productivity demands of global fishing fleets. Fish and Fisheries, 15(2), 231-241.</a>
Management policies	National Management policies	Number of protection categories for captured	Formative	<a href="https://www.miteco.gob.es/es/biodiversidad/temas/conservacion-de-especies/tabla_lespe_cea_19_tcm30-201186.xlsx">https://www.miteco.gob.es/es/biodiversidad/temas/conservacion-de-especies/tabla_lespe_cea_19_tcm30-201186.xlsx</a>

Latent variable	Class (Integrated indices)	Manifest variable	Type of Model	Data source
		species included in the Spanish Catalogue		
Management policies	National Management policies	Number of protection categories for seabirds included in the Spanish Catalogue	Formative	<a href="https://www.miteco.gob.es/es/biodiversidad/temas/conservacion-de-especies/tabla_lespe_cea_19_tcm30-201186.xlsx">https://www.miteco.gob.es/es/biodiversidad/temas/conservacion-de-especies/tabla_lespe_cea_19_tcm30-201186.xlsx</a>
Management policies	National Management policies	Number of protection categories for cetaceans included in the Spanish Catalogue	Formative	<a href="https://www.miteco.gob.es/es/biodiversidad/temas/conservacion-de-especies/tabla_lespe_cea_19_tcm30-201186.xlsx">https://www.miteco.gob.es/es/biodiversidad/temas/conservacion-de-especies/tabla_lespe_cea_19_tcm30-201186.xlsx</a>
Management policies	National Management policies	Number of protection categories for sea turtles included in the Spanish Catalogue	Formative	<a href="https://www.miteco.gob.es/es/biodiversidad/temas/conservacion-de-especies/tabla_lespe_cea_19_tcm30-201186.xlsx">https://www.miteco.gob.es/es/biodiversidad/temas/conservacion-de-especies/tabla_lespe_cea_19_tcm30-201186.xlsx</a>
Management policies	Regional Management policies	Number of protection categories for seabirds included in the Andalusian Catalogue	Formative	<a href="https://www.juntadeandalucia.es/medioambiente/portal_web/web/servicios/centro_de_documentacion_y_biblioteca/fondo_editorial_digital/documentos_tecnicos/Libro_rojo_vertebrados/documento_completo.pdf">https://www.juntadeandalucia.es/medioambiente/portal_web/web/servicios/centro_de_documentacion_y_biblioteca/fondo_editorial_digital/documentos_tecnicos/Libro_rojo_vertebrados/documento_completo.pdf</a>
Management policies	Regional Management policies	Number of protection categories for cetaceans included in the Andalusian Catalogue	Formative	<a href="https://www.juntadeandalucia.es/medioambiente/portal_web/web/servicios/centro_de_documentacion_y_biblioteca/fondo_editorial_digital/documentos_tecnicos/Libro_rojo_vertebrados/documento_completo.pdf">https://www.juntadeandalucia.es/medioambiente/portal_web/web/servicios/centro_de_documentacion_y_biblioteca/fondo_editorial_digital/documentos_tecnicos/Libro_rojo_vertebrados/documento_completo.pdf</a>
Management policies	Regional Management policies	Number of protection categories for sea turtles included in the Andalusian Catalogue	Formative	<a href="https://www.juntadeandalucia.es/medioambiente/portal_web/web/servicios/centro_de_documentacion_y_biblioteca/fondo_editorial_digital/documentos_tecnicos/Libro_rojo_vertebrados/documento_completo.pdf">https://www.juntadeandalucia.es/medioambiente/portal_web/web/servicios/centro_de_documentacion_y_biblioteca/fondo_editorial_digital/documentos_tecnicos/Libro_rojo_vertebrados/documento_completo.pdf</a>

Latent variable	Class (Integrated indices)	Manifest variable	Type of Model	Data source
Management policies	European Management policies	Number of seabird species included in Birds Directive	Formative	<a href="http://www.birdlife.org/">http://www.birdlife.org/</a> <a href="http://ec.europa.eu/environment/nature/legislation/birdsdirective/index_en.htm">http://ec.europa.eu/environment/nature/legislation/birdsdirective/index_en.htm</a>
Management policies	European Management policies	Number of species included in European and International Fishing Regulations	Formative	<a href="https://eur-lex.europa.eu/">https://eur-lex.europa.eu/</a> <a href="https://www.mapa.gob.es/es/pesca/temas/planes-de-gestion-y-recuperacion-de-especies/plan-de-recuperacion-plurianual-para-el-atun-rojo-del-atlantico-este-y-mediterraneo/">https://www.mapa.gob.es/es/pesca/temas/planes-de-gestion-y-recuperacion-de-especies/plan-de-recuperacion-plurianual-para-el-atun-rojo-del-atlantico-este-y-mediterraneo/</a> <a href="https://www.mapa.gob.es/es/pesca/temas/planes-de-gestion-y-recuperacion-de-especies/medidas-de-gestion-del-pezu-espada-en-el-mediterraneo/">https://www.mapa.gob.es/es/pesca/temas/planes-de-gestion-y-recuperacion-de-especies/medidas-de-gestion-del-pezu-espada-en-el-mediterraneo/</a>
Management policies	National Management policies	Number of species included in National Fishing Regulations	Formative	<a href="https://www.mapa.gob.es/es/pesca/temas/planes-de-gestion-y-recuperacion-de-especies/">https://www.mapa.gob.es/es/pesca/temas/planes-de-gestion-y-recuperacion-de-especies/</a>
Management policies	Regional Management policies	Number of species included in Regional Fishing Regulations	Formative	<a href="https://www.juntadeandalucia.es/eboja">https://www.juntadeandalucia.es/eboja</a> <a href="https://www.boe.es">https://www.boe.es</a>
Management policies	European Management policies	Number of European and International Fishing Regulations	Formative	<a href="https://eur-lex.europa.eu/">https://eur-lex.europa.eu/</a>
Management policies	National Management policies	Number of National Fishing Regulations	Formative	<a href="https://www.mapama.gob.es/es/pesca/legislacion/Caladernacional.aspx">https://www.mapama.gob.es/es/pesca/legislacion/Caladernacional.aspx</a>
Management policies	Regional Management policies	Number of Regional Fishing Regulations	Formative	<a href="https://normativapesquera.wordpress.com/lex-espanola/caladeros/mediterraneo/">https://normativapesquera.wordpress.com/lex-espanola/caladeros/mediterraneo/</a>
Conservation Policies	Number of regulations for protected areas	Number of regulations for protected areas	Formative	<a href="https://www.miteco.gob.es/es/costas/temas/proteccion-medio-marino/biodiversidad-marina/espacios-marinos-">https://www.miteco.gob.es/es/costas/temas/proteccion-medio-marino/biodiversidad-marina/espacios-marinos-</a>

Latent variable	Class (Integrated indices)	Manifest variable	Type of Model	Data source
				<a href="http://protegidos/red-areas-marin-as-protegidas-espana/bm_emprot_rampe_espacios.aspx">protegidos/red-areas-marin-as-protegidas-espana/bm_emprot_rampe_espacios.aspx</a> <a href="https://www.miteco.gob.es/es/biodiversidad/servicios/banco-datos-naturaleza/informacion-disponible/zepim.aspx">https://www.miteco.gob.es/es/biodiversidad/servicios/banco-datos-naturaleza/informacion-disponible/zepim.aspx</a>
Conservation Policies	Total Number of Marine Protected areas and reserves	Total Number of Marine Protected areas and reserves	Formative	<a href="http://www.reservasmarinas.net">http://www.reservasmarinas.net</a> <a href="https://www.miteco.gob.es/es/costas/temas/proteccion-medio-marino/biodiversidad-marina/espacios-marinos-protegidos/red-areas-marin-as-protegidas-espana/bm_emprot_rampe_espacios.aspx">https://www.miteco.gob.es/es/costas/temas/proteccion-medio-marino/biodiversidad-marina/espacios-marinos-protegidos/red-areas-marin-as-protegidas-espana/bm_emprot_rampe_espacios.aspx</a> <a href="https://www.miteco.gob.es/es/biodiversidad/servicios/banco-datos-naturaleza/informacion-disponible/Espacios_marinos_AGE.aspx">https://www.miteco.gob.es/es/biodiversidad/servicios/banco-datos-naturaleza/informacion-disponible/Espacios_marinos_AGE.aspx</a>
Conservation Policies	Changes in the Total Marine Protected Area Surface (ha)	Changes in the Total Marine Protected Area Surface (ha)	Formative	<a href="http://www.reservasmarinas.net">http://www.reservasmarinas.net</a> <a href="https://www.miteco.gob.es/es/costas/temas/proteccion-medio-marino/biodiversidad-marina/espacios-marinos-protegidos/red-areas-marin-as-protegidas-espana/bm_emprot_rampe_espacios.aspx">https://www.miteco.gob.es/es/costas/temas/proteccion-medio-marino/biodiversidad-marina/espacios-marinos-protegidos/red-areas-marin-as-protegidas-espana/bm_emprot_rampe_espacios.aspx</a> <a href="https://www.miteco.gob.es/es/biodiversidad/servicios/banco-datos-naturaleza/informacion-disponible/Espacios_marinos_AGE.aspx">https://www.miteco.gob.es/es/biodiversidad/servicios/banco-datos-naturaleza/informacion-disponible/Espacios_marinos_AGE.aspx</a>
Conservation Policies	Changes in the Total Marine Protected Area Surface (ha)	Surface Biosphere Reserve (ha)	Formative	<a href="http://www.reservasmarinas.net">http://www.reservasmarinas.net</a> <a href="https://www.miteco.gob.es/es/costas/temas/proteccion-medio-marino/biodiversidad-marina/espacios-marinos-protegidos/red-areas-marin-as-protegidas-espana/bm_emprot_rampe_espacios.aspx">https://www.miteco.gob.es/es/costas/temas/proteccion-medio-marino/biodiversidad-marina/espacios-marinos-protegidos/red-areas-marin-as-protegidas-espana/bm_emprot_rampe_espacios.aspx</a> <a href="https://www.miteco.gob.es/es/biodiversidad/temas/espacios-protegidos/red-natura-2000/default.aspx">https://www.miteco.gob.es/es/biodiversidad/temas/espacios-protegidos/red-natura-2000/default.aspx</a>



Latent variable	Class (Integrated indices)	Manifest variable	Type of Model	Data source
Conservation Policies	Changes in the Total Marine Protected Area Surface (ha)	Reserva Intercontinental Andalucía-Marruecos (ha)	Formative	<a href="http://www.reservasmarinas.net">http://www.reservasmarinas.net</a> <a href="https://www.miteco.gob.es/es/costas/temas/proteccion-medio-marino/biodiversidad-marina/espacios-marinos-protegidos/red-areas-marinas-protegidas-espana/bm_emprot_rampe_espacios.aspx">https://www.miteco.gob.es/es/costas/temas/proteccion-medio-marino/biodiversidad-marina/espacios-marinos-protegidos/red-areas-marinas-protegidas-espana/bm_emprot_rampe_espacios.aspx</a>
Conservation Policies	Changes in the Total Marine Protected Area Surface (ha)	<sup>a</sup> SCIs (ha)	Formative	<a href="http://www.reservasmarinas.net">http://www.reservasmarinas.net</a> <a href="https://www.miteco.gob.es/es/costas/temas/proteccion-medio-marino/biodiversidad-marina/espacios-marinos-protegidos/red-areas-marinas-protegidas-espana/bm_emprot_rampe_espacios.aspx">https://www.miteco.gob.es/es/costas/temas/proteccion-medio-marino/biodiversidad-marina/espacios-marinos-protegidos/red-areas-marinas-protegidas-espana/bm_emprot_rampe_espacios.aspx</a> <a href="https://www.miteco.gob.es/es/biodiversidad/servicios/banco-datos-naturaleza/informacion-disponible/Espacios_marinos_AGE.aspx">https://www.miteco.gob.es/es/biodiversidad/servicios/banco-datos-naturaleza/informacion-disponible/Espacios_marinos_AGE.aspx</a>
Conservation Policies	Changes in the Total Marine Protected Area Surface (ha)	<sup>c</sup> SAC (ha)	Formative	<a href="http://www.reservasmarinas.net">http://www.reservasmarinas.net</a> <a href="https://www.miteco.gob.es/es/costas/temas/proteccion-medio-marino/biodiversidad-marina/espacios-marinos-protegidos/red-areas-marinas-protegidas-espana/bm_emprot_rampe_espacios.aspx">https://www.miteco.gob.es/es/costas/temas/proteccion-medio-marino/biodiversidad-marina/espacios-marinos-protegidos/red-areas-marinas-protegidas-espana/bm_emprot_rampe_espacios.aspx</a> <a href="https://www.miteco.gob.es/es/biodiversidad/servicios/banco-datos-naturaleza/informacion-disponible/Espacios_marinos_AGE.aspx">https://www.miteco.gob.es/es/biodiversidad/servicios/banco-datos-naturaleza/informacion-disponible/Espacios_marinos_AGE.aspx</a>
Conservation Policies	Changes in the Total Marine Protected Area Surface (ha)	Marine Reserve (ha)	Formative	<a href="http://www.reservasmarinas.net">http://www.reservasmarinas.net</a> <a href="https://www.miteco.gob.es/es/costas/temas/proteccion-medio-marino/biodiversidad-marina/espacios-marinos-protegidos/red-areas-marinas-protegidas-espana/bm_emprot_rampe_espacios.aspx">https://www.miteco.gob.es/es/costas/temas/proteccion-medio-marino/biodiversidad-marina/espacios-marinos-protegidos/red-areas-marinas-protegidas-espana/bm_emprot_rampe_espacios.aspx</a> <a href="https://www.miteco.gob.es/es/biodiversidad/servicios/banco-datos-naturaleza/informacion-disponible/Espacios_marinos_AGE.aspx">https://www.miteco.gob.es/es/biodiversidad/servicios/banco-datos-naturaleza/informacion-disponible/Espacios_marinos_AGE.aspx</a>

Latent variable	Class (Integrated indices)	Manifest variable	Type of Model	Data source
Conservation Policies	Changes in the Total Marine Protected Area Surface (ha)	Paraje Natural (ha)	Formative	<a href="http://www.reservasmarinas.net">http://www.reservasmarinas.net</a> <a href="https://www.miteco.gob.es/es/costas/temas/proteccion-medio-marino/biodiversidad-marina/espacios-marinos-protegidos/red-areas-marinas-protegidas-espana/bm_emprot_rampe_espacios.aspx">https://www.miteco.gob.es/es/costas/temas/proteccion-medio-marino/biodiversidad-marina/espacios-marinos-protegidos/red-areas-marinas-protegidas-espana/bm_emprot_rampe_espacios.aspx</a> <a href="http://www.juntadeandalucia.es/medioambiente/site/portalweb/menuitem.7e1cf46ddf59bb227a9ebe205510e1ca/?vgnextoid=2b22ad0b5688f410VgnVCM1000001325e50aRCRD&amp;vgnextchannel=d8d64e5bf01f4310VgnVCM1000001325e50aRCRD">http://www.juntadeandalucia.es/medioambiente/site/portalweb/menuitem.7e1cf46ddf59bb227a9ebe205510e1ca/?vgnextoid=2b22ad0b5688f410VgnVCM1000001325e50aRCRD&amp;vgnextchannel=d8d64e5bf01f4310VgnVCM1000001325e50aRCRD</a>
Conservation Policies	Changes in the Total Marine Protected Area Surface (ha)	Parque Natural (ha)	Formative	<a href="http://www.reservasmarinas.net">http://www.reservasmarinas.net</a> <a href="https://www.miteco.gob.es/es/costas/temas/proteccion-medio-marino/biodiversidad-marina/espacios-marinos-protegidos/red-areas-marinas-protegidas-espana/bm_emprot_rampe_espacios.aspx">https://www.miteco.gob.es/es/costas/temas/proteccion-medio-marino/biodiversidad-marina/espacios-marinos-protegidos/red-areas-marinas-protegidas-espana/bm_emprot_rampe_espacios.aspx</a> <a href="http://www.juntadeandalucia.es/medioambiente/site/portalweb/menuitem.7e1cf46ddf59bb227a9ebe205510e1ca/?vgnextoid=2b22ad0b5688f410VgnVCM1000001325e50aRCRD&amp;vgnextchannel=d8d64e5bf01f4310VgnVCM1000001325e50aRCRD">http://www.juntadeandalucia.es/medioambiente/site/portalweb/menuitem.7e1cf46ddf59bb227a9ebe205510e1ca/?vgnextoid=2b22ad0b5688f410VgnVCM1000001325e50aRCRD&amp;vgnextchannel=d8d64e5bf01f4310VgnVCM1000001325e50aRCRD</a>
Conservation Policies	Total Number of Marine Protected areas and reserves	Biosphere Reserve (n°)	Formative	<a href="http://www.reservasmarinas.net">http://www.reservasmarinas.net</a> <a href="https://www.miteco.gob.es/es/costas/temas/proteccion-medio-marino/biodiversidad-marina/espacios-marinos-protegidos/red-areas-marinas-protegidas-espana/bm_emprot_rampe_espacios.aspx">https://www.miteco.gob.es/es/costas/temas/proteccion-medio-marino/biodiversidad-marina/espacios-marinos-protegidos/red-areas-marinas-protegidas-espana/bm_emprot_rampe_espacios.aspx</a> <a href="https://www.miteco.gob.es/es/biodiversidad/temas/espacios-protegidos/red-natura-2000/default.aspx">https://www.miteco.gob.es/es/biodiversidad/temas/espacios-protegidos/red-natura-2000/default.aspx</a>
Conservation Policies	Total Number of Marine Protected areas and reserves	Reserva Intercontinental Andalucía-Marruecos (n°)	Formative	<a href="http://www.reservasmarinas.net">http://www.reservasmarinas.net</a> <a href="https://www.miteco.gob.es/es/costas/temas/proteccion-medio-marino/biodiversidad-marina/espacios-marinos-protegidos/red-natura-2000/default.aspx">https://www.miteco.gob.es/es/costas/temas/proteccion-medio-marino/biodiversidad-marina/espacios-marinos-protegidos/red-natura-2000/default.aspx</a>

Latent variable	Class (Integrated indices)	Manifest variable	Type of Model	Data source
				<a href="http://protegidos/red-areas-marin-as-protegidas-espana/bm_emprot_rampe_espacios.aspx">protegidos/red-areas-marin-as-protegidas-espana/bm_emprot_rampe_espacios.aspx</a>
Conservation Policies	Total Number of Marine Protected areas and reserves	<sup>a</sup> SCIs (n°)	Formative	<a href="http://www.reservasmarinas.net">http://www.reservasmarinas.net</a> <a href="https://www.miteco.gob.es/es/costas/temas/proteccion-medio-marino/biodiversidad-marina/espacios-marinos-protegidos/red-areas-marin-as-protegidas-espana/bm_emprot_rampe_espacios.aspx">https://www.miteco.gob.es/es/costas/temas/proteccion-medio-marino/biodiversidad-marina/espacios-marinos-protegidos/red-areas-marin-as-protegidas-espana/bm_emprot_rampe_espacios.aspx</a> <a href="https://www.miteco.gob.es/es/biodiversidad/servicios/banco-datos-naturaleza/informacion-disponible/Espacios_marinos_AGE.aspx">https://www.miteco.gob.es/es/biodiversidad/servicios/banco-datos-naturaleza/informacion-disponible/Espacios_marinos_AGE.aspx</a>
Conservation Policies	Total Number of Marine Protected areas and reserves	<sup>b</sup> SPAs (n°)	Formative	<a href="http://www.reservasmarinas.net">http://www.reservasmarinas.net</a> <a href="https://www.miteco.gob.es/es/costas/temas/proteccion-medio-marino/biodiversidad-marina/espacios-marinos-protegidos/red-areas-marin-as-protegidas-espana/bm_emprot_rampe_espacios.aspx">https://www.miteco.gob.es/es/costas/temas/proteccion-medio-marino/biodiversidad-marina/espacios-marinos-protegidos/red-areas-marin-as-protegidas-espana/bm_emprot_rampe_espacios.aspx</a> <a href="https://www.miteco.gob.es/es/biodiversidad/servicios/banco-datos-naturaleza/informacion-disponible/Espacios_marinos_AGE.aspx">https://www.miteco.gob.es/es/biodiversidad/servicios/banco-datos-naturaleza/informacion-disponible/Espacios_marinos_AGE.aspx</a>
Conservation Policies	Total Number of Marine Protected areas and reserves	<sup>c</sup> SAC (n°)	Formative	<a href="http://www.reservasmarinas.net">http://www.reservasmarinas.net</a> <a href="https://www.miteco.gob.es/es/costas/temas/proteccion-medio-marino/biodiversidad-marina/espacios-marinos-protegidos/red-areas-marin-as-protegidas-espana/bm_emprot_rampe_espacios.aspx">https://www.miteco.gob.es/es/costas/temas/proteccion-medio-marino/biodiversidad-marina/espacios-marinos-protegidos/red-areas-marin-as-protegidas-espana/bm_emprot_rampe_espacios.aspx</a> <a href="https://www.miteco.gob.es/es/biodiversidad/servicios/banco-datos-naturaleza/informacion-disponible/Espacios_marinos_AGE.aspx">https://www.miteco.gob.es/es/biodiversidad/servicios/banco-datos-naturaleza/informacion-disponible/Espacios_marinos_AGE.aspx</a>
Conservation Policies	Total Number of Marine Protected areas and reserves	Marine Reserve (n°)	Formative	<a href="http://www.reservasmarinas.net">http://www.reservasmarinas.net</a> <a href="https://www.miteco.gob.es/es/costas/temas/proteccion-medio-marino/biodiversidad-marina/espacios-marinos-protegidos/red-areas-marin-as-protegidas-espana/bm_emprot_rampe_espacios.aspx">https://www.miteco.gob.es/es/costas/temas/proteccion-medio-marino/biodiversidad-marina/espacios-marinos-protegidos/red-areas-marin-as-protegidas-espana/bm_emprot_rampe_espacios.aspx</a>

Latent variable	Class (Integrated indices)	Manifest variable	Type of Model	Data source
				<a href="http://protegidos/red-areas-marinas-protegidas-espana/bm_emprot_rampe_espacios.aspx">protegidos/red-areas-marinas-protegidas-espana/bm_emprot_rampe_espacios.aspx</a>
Conservation Policies	Total Number of Marine Protected areas and reserves	Paraje Natural (n°)	Formative	<a href="http://www.reservasmarinas.net">http://www.reservasmarinas.net</a> <a href="https://www.miteco.gob.es/es/costas/temas/proteccion-medio-marino/biodiversidad-marina/espacios-marinos-protegidos/red-areas-marinas-protegidas-espana/bm_emprot_rampe_espacios.aspx">https://www.miteco.gob.es/es/costas/temas/proteccion-medio-marino/biodiversidad-marina/espacios-marinos-protegidos/red-areas-marinas-protegidas-espana/bm_emprot_rampe_espacios.aspx</a> <a href="http://www.juntadeandalucia.es/medioambiente/site/portalweb/menuitem.7e1cf46ddf59bb227a9ebe205510e1ca/?vgnextoid=2b22ad0b5688f410VgnVCM1000001325e50aRCRD&amp;vgnextchannel=d8d64e5bf01f4310VgnVCM1000001325e50aRCRD">http://www.juntadeandalucia.es/medioambiente/site/portalweb/menuitem.7e1cf46ddf59bb227a9ebe205510e1ca/?vgnextoid=2b22ad0b5688f410VgnVCM1000001325e50aRCRD&amp;vgnextchannel=d8d64e5bf01f4310VgnVCM1000001325e50aRCRD</a>
Conservation Policies	Total Number of Marine Protected areas and reserves	Parque Natural (n°)	Formative	<a href="http://www.reservasmarinas.net">http://www.reservasmarinas.net</a> <a href="https://www.miteco.gob.es/es/costas/temas/proteccion-medio-marino/biodiversidad-marina/espacios-marinos-protegidos/red-areas-marinas-protegidas-espana/bm_emprot_rampe_espacios.aspx">https://www.miteco.gob.es/es/costas/temas/proteccion-medio-marino/biodiversidad-marina/espacios-marinos-protegidos/red-areas-marinas-protegidas-espana/bm_emprot_rampe_espacios.aspx</a> <a href="http://www.juntadeandalucia.es/medioambiente/site/portalweb/menuitem.7e1cf46ddf59bb227a9ebe205510e1ca/?vgnextoid=2b22ad0b5688f410VgnVCM1000001325e50aRCRD&amp;vgnextchannel=d8d64e5bf01f4310VgnVCM1000001325e50aRCRD">http://www.juntadeandalucia.es/medioambiente/site/portalweb/menuitem.7e1cf46ddf59bb227a9ebe205510e1ca/?vgnextoid=2b22ad0b5688f410VgnVCM1000001325e50aRCRD&amp;vgnextchannel=d8d64e5bf01f4310VgnVCM1000001325e50aRCRD</a>

<sup>a</sup>Sites of Community Importance (SCI), <sup>b</sup>Special Protection Areas (SPA), <sup>c</sup>Special Areas of Conservation (SAC); \*Deleted indicator from the PSL-PM analyses because their low Communalities values

**Table S2.** Weights of the MVs of the outer model of the Gulf of Cádiz. The weights of the formative indicators are used to determine which MV contribute most effectively to its forming LV (marked in bold).

Latent Variable	Manifest variables	Outer weights	Outer weights (Bootstrap)	S.E.	Lower Confidence limit (95%)	Upper Confidence limit (95%)
Management policies	European Management policies	0.206	0.262	0.150	0.065	0.723
	National Management policies	0.340	0.318	0.228	-0.058	0.902
	Regional Management policies	<b>0.589</b>	0.534	0.215	-0.023	0.835
Pressures	Population (inhabitants/yr)	-0.192	-0.249	0.170	-0.659	0.164
	Overexploitation	<b>0.973</b>	0.916	0.141	0.553	1.205
	Land use change	0.175	0.180	0.112	-0.102	0.465
Biodiversity loss	nº bony fish spp.	0.150	0.152	0.076	0.008	0.440
	nº cartilaginous fish spp.	<b>0.180</b>	0.177	0.047	0.045	0.266
	nº molluscs spp.	-0.123	-0.123	0.029	-0.179	-0.064
	nº crustacean spp.	0.042	0.035	0.051	-0.072	0.153
	UICN (fisheries)	0.250	0.249	0.006	0.238	0.262
	IUCN (unexploited)	0.259	0.258	0.009	0.241	0.275
	IUCN (Global)	0.258	0.256	0.005	0.248	0.270
Cultural ES	Artisanal fishery features	1.000	0.992	0.002	0.988	0.995
Regulating ES	PPR	1.000	0.992	0.002	0.988	0.995
Provisioning ES	Total fisheries' biomass for all groups (kg)	0.465	0.460	0.016	0.417	0.488
	Fishermen	0.611	0.608	0.047	0.530	0.736
Conservation Policy	Number of regulations for protected areas	0.008	0.005	0.039	-0.102	0.075
	Total Number of Marine Protected areas and reserves	<b>1.728</b>	1.764	0.420	1.081	2.867
	Changes in the Total Marine Protected Area Surface (ha)	-0.742	-0.788	0.429	-1.921	-0.101

**Table S3.** Weights of the MVs of the outer model of Alborán. The weights of the formative indicators are used to determine which MV contribute most effectively to its forming LV (marked in bold).

Latent Variable	Manifest variables	Outer weights	Outer weights (Bootstrap)	S.E.	Lower Confidence limit (95%)	Upper Confidence limit (95%)
Regulating ES	ITM	0.534	0.526	0.021	0.485	0.592
	PPR	0.534	0.532	0.025	0.483	0.597
Cultural ES	Artisanal fishery features	1.000	0.991	0.002	0.986	0.996
Provisioning ES	Total fisheries' biomass for all groups (kg)	0.484	0.480	0.009	0.455	0.493
	Evolution of the number of professional fishermen's organizations	0.556	0.550	0.016	0.526	0.591
Biodiversity Loss	n° bony fish spp.	<b>0.362</b>	0.355	0.068	0.255	0.513
	n° cartilaginous fish spp.	-0.023	-0.048	0.070	-0.222	0.059
	n° molluscs spp.	-0.097	-0.078	0.027	-0.131	-0.024
	n° crustacean spp.	-0.025	-0.020	0.033	-0.081	0.051
	IUCN (fisheries)	0.183	0.198	0.022	0.170	0.236
	IUCN (unexploited spp.)	0.212	0.203	0.013	0.174	0.223
	IUCN (Global)	0.230	0.221	0.011	0.202	0.238
	IUCN (Mediterranean)	0.239	0.229	0.013	0.207	0.250
Conservation Policies	Number of regulations for protected areas	0.059	0.071	0.055	-0.062	0.167
	Total Number of Marine Protected areas and reserves	<b>0.878</b>	0.891	0.191	0.384	1.195
	Changes in the Total Marine Protected Area Surface (ha)	0.106	0.081	0.202	-0.251	0.617
Management Policies	European Management Policies	0.078	0.133	0.168	-0.117	0.590
	National Management policies	0.355	0.375	0.204	0.051	0.795
	Regional Management policies	<b>0.636</b>	0.551	0.199	-0.032	0.919
Pressures	Population (inhabitants/yr)	0.348	0.295	0.162	-0.144	0.569
	Overexploitation	<b>1.074</b>	1.027	0.112	0.721	1.202
	Land use change	-0.287	-0.275	0.081	-0.441	-0.077

**Table S4.** Cross-loading matrix of the outer model of Gulf of Cádiz. Loadings of a MV with the rest of LVs. The shared variance between LV and its MVs must be larger than the shared with other LV looking at the diagonal of the cross-loading matrix block by block.

Cross loadings	Management policies	Pressures	Biodiversity loss	Cultural ES	Regulating ES	Provisioning ES	Conservation Policy
European Management policies	<b>0.635</b>	-0.538	0.543	0.021	-0.344	-0.516	0.529
National Management policies	<b>0.915</b>	-0.775	0.746	0.145	-0.352	-0.682	0.743
Regional Management policies	<b>0.946</b>	-0.802	0.743	0.195	-0.339	-0.688	0.736
Population (inhabitants/yr)	0.756	<b>-0.911</b>	0.908	-0.160	-0.629	-0.919	0.969
Overexploitation	-0.840	<b>0.997</b>	-0.982	0.221	0.621	0.924	-0.958
Land use change	0.663	<b>-0.836</b>	0.864	-0.327	-0.659	-0.856	0.897
n° bony fish spp.	0.757	-0.953	<b>0.962</b>	-0.265	-0.640	-0.931	0.951
n° cartilaginous fish spp.	0.607	-0.881	<b>0.915</b>	-0.373	-0.692	-0.904	0.905
n° molluscs spp.	0.560	-0.681	<b>0.642</b>	-0.003	-0.148	-0.629	0.666
n° crustacean spp.	0.739	-0.927	<b>0.928</b>	-0.278	-0.616	-0.871	0.888
UICN (fisheries)	0.891	-0.975	<b>0.963</b>	-0.061	-0.604	-0.918	0.936
IUCN (unexploited)	0.656	-0.874	<b>0.919</b>	-0.390	-0.640	-0.834	0.873
IUCN Global)	0.879	-0.984	<b>0.980</b>	-0.110	-0.624	-0.928	0.950
Artisanal fishery features	0.169	0.189	-0.263	<b>1.000</b>	0.400	0.199	-0.231
PPR	-0.390	0.610	-0.706	0.400	<b>1.000</b>	0.797	-0.671
Total fisheries' biomass for all groups (kg)	-0.481	0.697	-0.746	0.218	0.867	<b>0.906</b>	-0.739
Evolution of the number of professional fishermen's organizations *(-1)	-0.851	<b>0.986</b>	-0.980	0.159	0.644	0.947	-0.976
Number of regulations for protected areas	-0.064	-0.114	0.180	-0.350	-0.221	-0.209	<b>0.186</b>
Total Number of Marine Protected areas and reserves	0.802	-0.961	0.960	-0.177	-0.655	-0.941	<b>0.995</b>
Changes in the Total Marine Protected Area Surface (ha)	0.795	-0.942	0.937	-0.105	-0.624	-0.927	<b>0.971</b>

**Table S5.** Cross-loading matrix of the outer model of Alborán. Loadings of a MV with the rest of LVs. The shared variance between LV and its MVs must be larger than the shared with other LV looking at the diagonal of the cross-loading matrix block by block.

Cross loadings	Regulating ES	Cultural ES	Provisioning ES	Biodiversity Loss	Conservation Policies	Management Policies	Pressures
ITM	<b>0.936</b>	0.615	0.804	-0.809	-0.757	-0.526	0.716
PPR	<b>0.936</b>	0.685	0.923	-0.808	-0.813	-0.660	0.788
Artisanal fishery features	0.694	<b>1.000</b>	0.860	-0.904	-0.937	-0.909	0.960
Total fisheries' biomass for all groups (kg)	0.909	0.700	<b>0.956</b>	-0.838	-0.834	-0.663	0.801
Evolution of the number of professional fishermen's organizations	0.867	0.938	<b>0.966</b>	-0.961	-0.980	-0.881	0.975
n° bony fish spp.	-0.895	-0.848	-0.921	<b>0.913</b>	0.935	0.747	-0.876
n° cartilaginous fish spp.	-0.856	-0.760	-0.859	<b>0.847</b>	0.853	0.650	-0.782
n° molluscs spp.	-0.585	-0.348	-0.455	<b>0.436</b>	0.468	0.212	-0.337
n° crustacean spp.	-0.830	-0.762	-0.845	<b>0.803</b>	0.854	0.660	-0.786
IUCN (fisheries)	-0.524	-0.713	-0.628	<b>0.785</b>	0.716	0.649	-0.728
IUCN (unexploited spp.)	-0.826	-0.644	-0.831	<b>0.866</b>	0.779	0.590	-0.764
IUCN (Global)	-0.812	-0.768	-0.862	<b>0.956</b>	0.864	0.702	-0.859
IUCN (Mediterranean)	-0.748	-0.935	-0.847	0.856	<b>0.907</b>	0.813	-0.896
Number of regulations for protected areas	-0.205	-0.299	-0.314	0.319	<b>0.331</b>	0.330	-0.325
Total Number of Marine Protected areas and reserves	-0.844	-0.935	-0.946	0.962	<b>0.998</b>	0.864	-0.963
Changes in the Total Marine Protected Area Surface (ha)	-0.797	-0.927	-0.933	0.946	<b>0.981</b>	0.892	-0.971
European Management Policies	-0.462	-0.568	-0.546	0.503	0.624	<b>0.655</b>	-0.606
National Management policies	-0.586	-0.843	-0.739	0.765	0.815	<b>0.924</b>	-0.855
Regional Management policies	-0.612	-0.890	-0.796	0.798	0.842	<b>0.977</b>	-0.904
Population (inhabitants/yr)	-0.885	-0.886	-0.948	0.920	0.958	0.774	<b>-0.901</b>
Overexploitation	0.798	0.975	0.918	-0.948	-0.971	-0.920	<b>0.994</b>
Land use change	-0.886	-0.772	-0.951	0.892	0.899	0.720	<b>-0.858</b>



**Table S6.** Summary of the Marine Protected Areas (MPAs) of the marine areas of the Gulf of Cádiz.

Marine Protected Area	Figure	Year of creation	Governance	Level of protection	Marine area
Doñana	SCI <sup>a</sup>	1987	Spanish government	RN2000-EU	Gulf of Cádiz
Doñana	RAMSAR	1982	Spanish government	International	Gulf of Cádiz
Doñana	Biosphere Reserve	1980	Spanish government	International	Gulf of Cádiz
Doñana	SPA <sup>b</sup>	1987	Spanish government	RN2000-EU	Gulf of Cádiz
Marismas de Isla Cristina	Paraje Natural	1989	Regional government	Andalucía	Gulf of Cádiz
Marismas de Isla Cristina	SCI <sup>a</sup>	2006	Spanish government	RN2000-EU	Gulf of Cádiz
Marismas de Isla Cristina	SPA <sup>b</sup>	2002	Spanish government	RN2000-EU	Gulf of Cádiz
Fondos Marinos Río Palmones	SCI <sup>a</sup>	2006	Spanish government	RN2000-EU	Gulf of Cádiz
Fondos Marinos Río Palmones	Paraje Natural	1989	Regional government	Andalucía	Gulf of Cádiz
Fondos Marinos Río Palmones	SAC <sup>c</sup>	2002	Spanish government	RN2000-EU	Gulf of Cádiz
Fondos Marinos Río Palmones	SPA <sup>b</sup>	2013	Spanish government	RN2000-EU	Gulf of Cádiz
Fondos Marinos Bahía de Cádiz	SCI <sup>a</sup>	2006	Spanish government	RN2000-EU	Gulf of Cádiz
Fondos Marinos Bahía de Cádiz	SAC <sup>c</sup>	2012	Spanish government	RN2000-EU	Gulf of Cádiz
Bahía de Cádiz	Parque Natural	1989	Regional government	Andalucía	Gulf of Cádiz
Frente litoral Estrecho	SCI <sup>a</sup>	1989	Spanish government	RN2000-EU	Gulf of Cádiz
Frente litoral Estrecho	SPA <sup>b</sup>	2003	Spanish government	RN2000-EU	Gulf of Cádiz
Estrecho	Biosphere Reserve	2006	Spanish government	International	Gulf of Cádiz
Estrecho	Parque Natural	2003	Regional government	Andalucía	Gulf of Cádiz
Estrecho	SAC <sup>c</sup>	2012	Spanish government	RN2000-EU	Gulf of Cádiz
La Breña y Marismas de Barbate	SCI <sup>a</sup>	1997	Spanish government	RN2000-EU	Gulf of Cádiz
La Breña y Marismas de Barbate	Parque Natural	1989	Regional government	Andalucía	Gulf of Cádiz
La Breña y Marismas de Barbate	SAC <sup>c</sup>	2012	Spanish government	RN2000-EU	Gulf of Cádiz
La Breña y Marismas de Barbate	SPA <sup>b</sup>	2002	Spanish government	RN2000-EU	Gulf of Cádiz
Punta Trafalgar	SCI <sup>a</sup>	1999	Spanish government	RN2000-EU	Gulf of Cádiz
Reserva de Pesca Desembocadura Guadalquivir	Marine reserve for fishing	2004	Regional government	Andalucía	Gulf of Cádiz
Reserva Intercontinental Andalucía-Marruecos	Intercontinental Marine Reserve Andalucía-Marocco	2006	Spanish government	International	Gulf of Cádiz

<sup>a</sup>Sites of Community Importance (SCI), <sup>b</sup>Special Protection Areas (SPA), <sup>c</sup>Special Areas of Conservation (SAC)

**Table S7.** Summary of the Marine Protected Areas (MPAs) of the marine areas of the Alborán Sea.

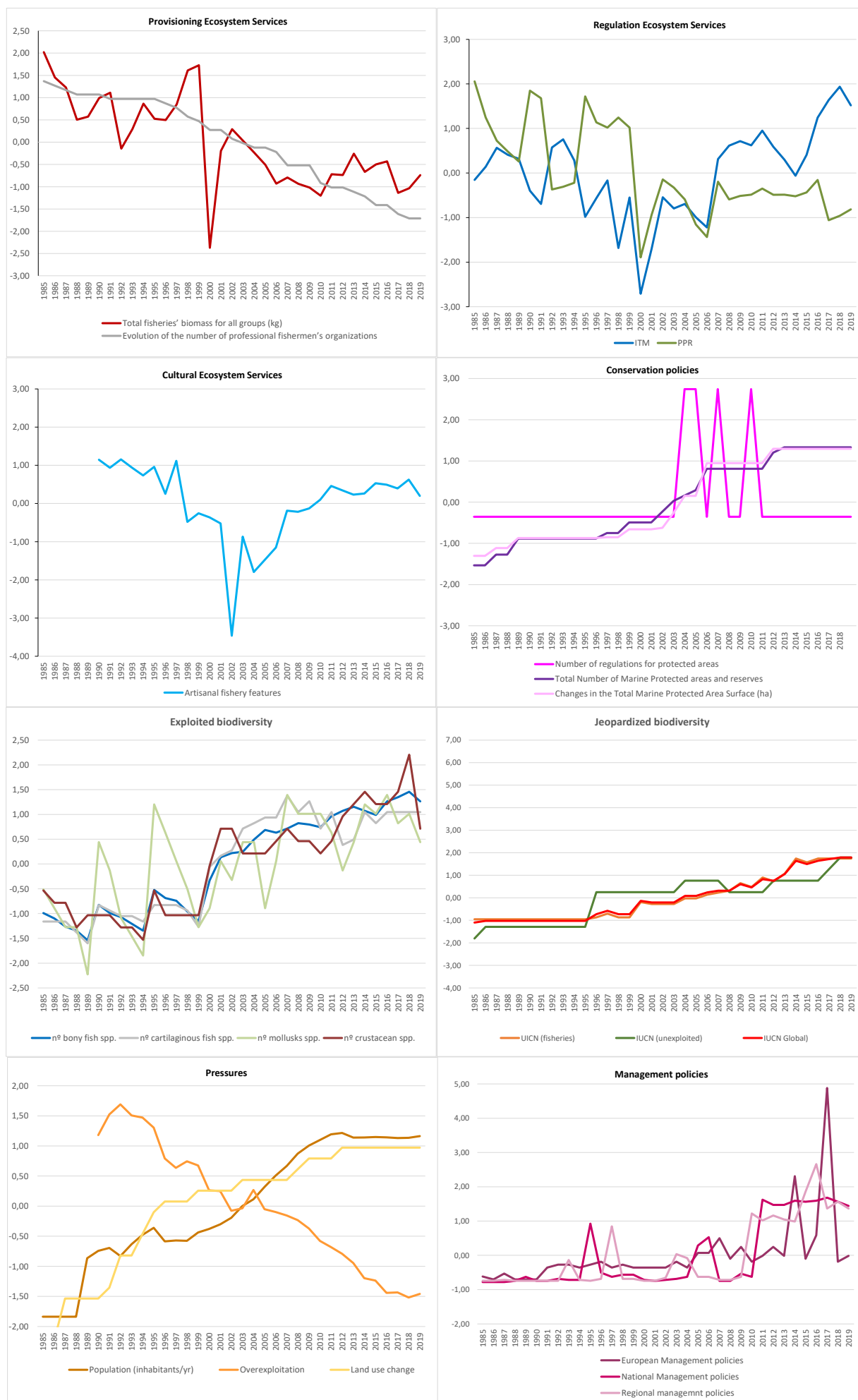
Marine Protected Area	Figure	Year of creation	Governance	Level of protection	Marine area
Acantilados Maro-Cerro Gordo	Paraje Natural	1989	Regional government	Andalucía	Alborán sea
Acantilados Maro-Cerro Gordo	SAC <sup>c</sup>	2014	Spanish government	RN2000-EU	Alborán sea
Acantilados Maro-Cerro Gordo	SCI <sup>a</sup>	2006	Spanish government	RN2000-EU	Alborán sea
Acantilados Maro-Cerro Gordo	SPA <sup>b</sup>	2010	Spanish government	RN2000-EU	Alborán sea
Acantilados Maro-Cerro Gordo	ZEPIM <sup>d</sup>	2003	Spanish government	RN2000-EU	Alborán sea
Bahía de Almería	SPA <sup>b</sup>	2014	Spanish government	RN2000-EU	Alborán sea
Cabo de Gata-Níjar	Biosphere Reserve	1997	Spanish government	International	Alborán sea
Cabo de Gata-Níjar	Marine Reserve	1995	Spanish government	National	Alborán sea
Cabo de Gata-Níjar	Parque Natural	1988	Regional government	Andalucía	Alborán sea
Cabo de Gata-Níjar	SAC <sup>c</sup>	2012	Spanish government	RN2000-EU	Alborán sea
Cabo de Gata-Níjar	SCI <sup>a</sup>	2006	Spanish government	RN2000-EU	Alborán sea
Cabo de Gata-Níjar	SPA <sup>b</sup>	1989	Spanish government	RN2000-EU	Alborán sea
Cabo de Gata-Níjar	ZEPIM <sup>d</sup>	2001	Spanish government	International	Alborán sea
El Saladillo-Punta de Baños	SCI <sup>a</sup>	2012	Spanish government	International	Alborán sea
Espacio Marino de Alborán	SCI <sup>a</sup>	2014	Spanish government	International	Alborán sea
Estrecho Oriental	SCI <sup>a</sup>	2009	Spanish government	International	Alborán sea
Estrecho Oriental	SAC <sup>c</sup>	2012	Spanish government	International	Alborán sea
Fondos Marinos Calahonda-Castells de Ferro	SCI <sup>a</sup>	2006	Spanish government	International	Alborán sea
Fondos Marinos Guadiaro	SCI <sup>a</sup>	2006	Spanish government	International	Alborán sea
Fondos Marinos Levante almeriense	SCI <sup>a</sup>	2006	Spanish government	International	Alborán sea
Fondos Marinos Punta de la Mona	SAC <sup>c</sup>	2014	Spanish government	International	Alborán sea
Fondos Marinos Punta de la Mona	SCI <sup>a</sup>	2006	Spanish government	International	Alborán sea
Fondos Marinos Punta Entinas-Sabinar	SCI <sup>a</sup>	2006	Spanish government	International	Alborán sea
Fondos Marinos Punta Entinas-Sabinar	SPA <sup>b</sup>	2003	Spanish government	International	Alborán sea
Fondos Marinos Tesorillo-Salobreña	SAC <sup>c</sup>	2014	Spanish government	International	Alborán sea
Fondos Marinos Tesorillo-Salobreña	SCI <sup>a</sup>	2006	Spanish government	International	Alborán sea

Isla Alborán	Marine Reserve	1997	Spanish government	National	Alborán sea
Isla Alborán	Marine Reserve for fishing	1997	Spanish government	National	Alborán sea
Isla Alborán	Paraje Natural	2003	Regional government	Andalucía	Alborán sea
Isla Alborán	SAC <sup>c</sup>	2015	Spanish government	RN2000-EU	Alborán sea
Isla Alborán	SCI <sup>a</sup>	2006	Spanish government	RN2000-EU	Alborán sea
Isla Alborán	SPA <sup>b</sup>	2001	Spanish government	RN2000-EU	Alborán sea
Isla Alborán y Fondos Marinos	ZEPIM <sup>d</sup>	2001	Spanish government	RN2000-EU	Alborán sea
Salinas Cabo de Gata	RAMSAR	2006	Spanish government	RN2000-EU	Alborán sea

---

<sup>a</sup>Sites of Community Importance (SCI), <sup>b</sup>Special Protection Areas (SPA), <sup>c</sup>Special Areas of Conservation (SAC); <sup>d</sup>Zona especialmente protegida de importancia para el Mediterráneo (ZPIM)

**Figure S1.** Time series of the indicator set used for the Gulf of Cádiz area.



**Figure S2.** Time series of the indicator set used for the Alborán area.

