

Supplementary Materials

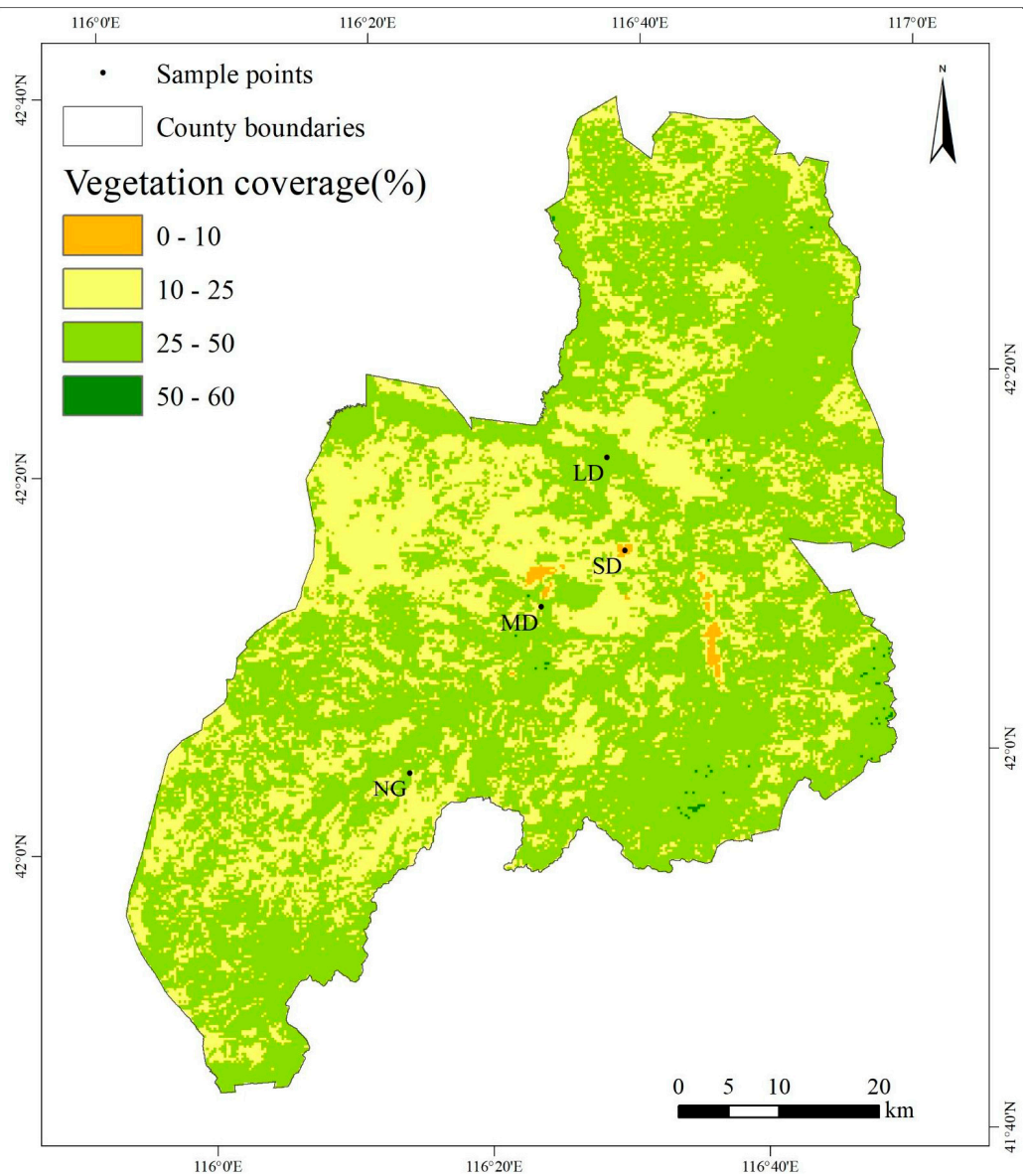


Figure S1. Vegetation coverage in different land-use patterns on semiarid grasslands in Duolun, Inner Mongolia, China (i.e., SD: 20 ha plot that has been grazed for more than 50 years; MD : Free-grazing, long-term heavy grazing 24 ha plot that has been grazed since 1989; LD: Free-grazing, light grazing 24 ha plot that has been grazed since 1979; NG: 40 ha plot fenced since 2000).

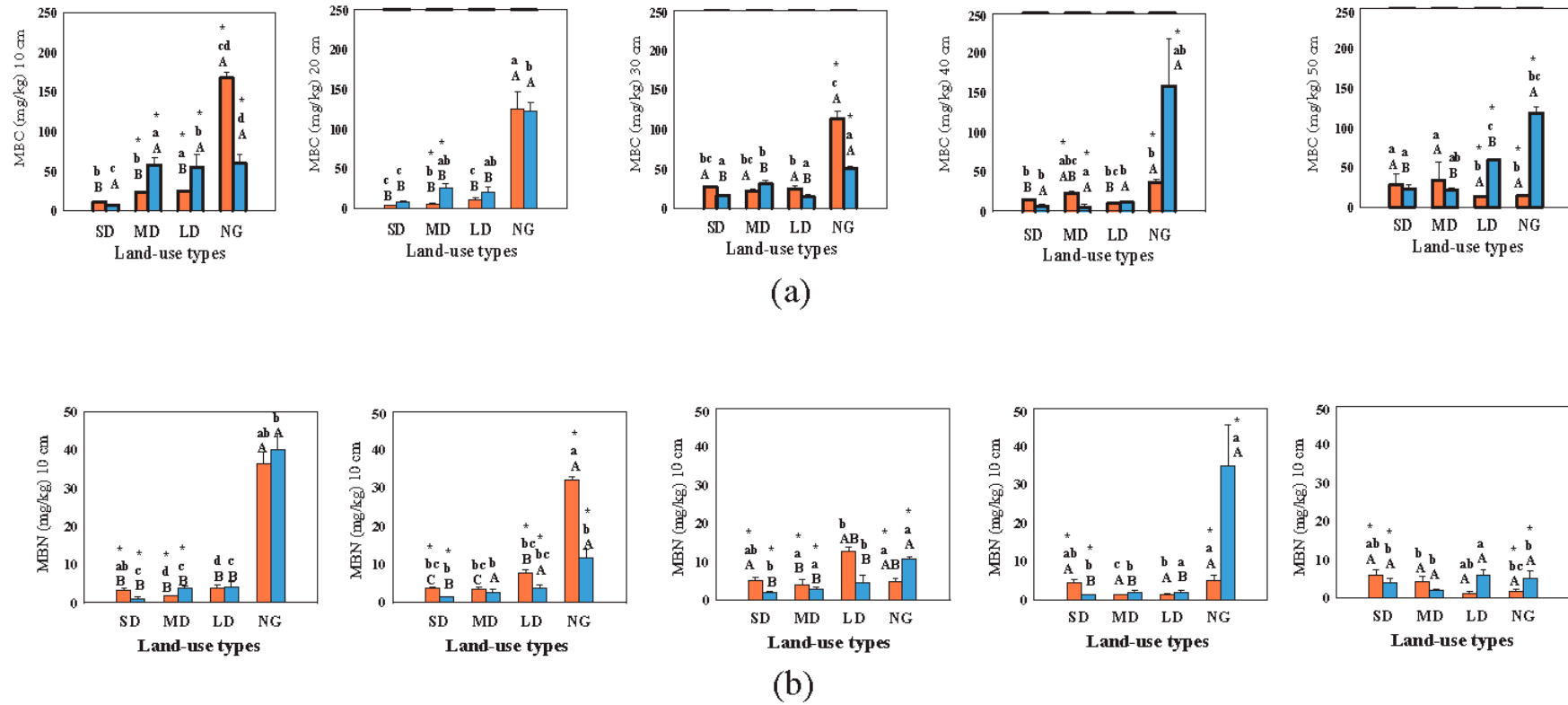


Figure S2. Microbial biomass C (a) and N (b) concentrations and depth profiles in the different land-use types in a semiarid grassland. Error bars indicate SE ($n = 5$). See Table 1 for site abbreviations. Different letters indicate significant differences among soil SOC and STN (i.e., lower-case letters indicate significant difference between soil depth; capital letters indicate significant difference among grazing intensity), and asterisks (*) indicate significant difference between dry season (red color bars) and wet seasons (blue color bars).