




Article

Research on the Closure and Remediation Processes of Mining Areas in Romania and Approaches to the Strategy for Heavy Metal Pollution Remediation

Violeta Monica Radu ¹, Anca Marina Vijdea ^{1,*}, Alexandru Anton Ivanov ¹, Veronica Elena Alexe ¹, George Dincă ^{1,2}, Valentina Maria Cetean ¹ and Andra Elena Filiuță ¹

¹ Geological Institute of Romania, 012271 Bucharest, Romania; radumonica33@yahoo.com (V.M.R.); aa_ivanov.igr@outlook.com (A.A.I.); v_e_alexu@yahoo.com (V.E.A.); georgedincu@rocketmail.com (G.D.); valentina.cetean@yahoo.com (V.M.C.); f_e_andra@yahoo.com (A.E.F.)

² Research Centre for Ecological Services (CESEC), Faculty of Biology, University of Bucharest, 050095 Bucharest, Romania

* Correspondence: anca.vijdea@igr.ro

Abstract: Mining activities often generate important amounts of extractive waste, and, as a consequence, environmental impacts that affect all factors to a greater or lesser extent. Depending on a variety of variables, the impact can be permanent or temporary, reversible or irreversible, negative or positive. This study conducted research on the status of closure and remediation processes of mining areas in Romania, specifically in the counties of Maramureș, Suceava, Harghita, Alba, Hunedoara and Caraș-Severin. Furthermore, based on the type and level of pollution, the degree of application of remediation techniques for water and soil pollution in the investigated mining areas was studied. From the analysed information, it is evident that although the closure and remediation process started in Romania over 20 years ago, unfortunately, to this day, the technical projects, technical assistance, and execution of closure and remediation works have not yet completely solved the complex environmental issues in the mining sector. Most of the tailing ponds and waste piles of former mines continue to pose permanent specific risks to the environment and the population. This study concludes that the mining sector in Romania, although it has the necessary techniques and technologies for the ecological rehabilitation of degraded lands related to the Extractive Waste Facilities and the elimination of negative impacts on the environment and public health, has not yet been able to fully concretize its remediation efforts.

Keywords: heavy metals; mining activities; pollution; remediation



Citation: Radu, V.M.; Vijdea, A.M.; Ivanov, A.A.; Alexe, V.E.; Dincă, G.; Cetean, V.M.; Filiuță, A.E. Research on the Closure and Remediation Processes of Mining Areas in Romania and Approaches to the Strategy for Heavy Metal Pollution Remediation. *Sustainability* **2023**, *15*, 15293. <https://doi.org/10.3390/su152115293>

Academic Editors: Xiaofei Tan and Jia Wen

Received: 19 September 2023

Revised: 16 October 2023

Accepted: 24 October 2023

Published: 26 October 2023



Copyright: © 2023 by the authors. Licensee MDPI, Basel, Switzerland. This article is an open access article distributed under the terms and conditions of the Creative Commons Attribution (CC BY) license (<https://creativecommons.org/licenses/by/4.0/>).

1. Introduction

Valuable mineral substances represent the essential foundation for any industrial activity, and therefore, the premise for the economic growth of any nation [1,2]. One of the main goals of the mining industry is to satisfy society's demand for resources for infrastructure development or the production of used goods, in order to increase the quality of life of the population [3–5]. The extraction of valuable mineral substances creates an imbalance in the natural environment, both in the extraction sites themselves and in the areas where the wastes resulting from the stages of exploitation and processing have been deposited [6–9]. Moreover, it is recognized that the mining industry is, worldwide, one of the main sources of waste production, and the areas occupied by dams and tailings deposits, are becoming more and more significant. In the last decades, the extraction of mineral raw materials has reached impressive quantities [10,11], e.g., about 550–750 Mt of extractive waste being generated in the EU every year [12]. As a consequence of the planet's population growth and the pace of economic expansion in developing countries, the demand for raw materials is set to increase further, thereby resulting in significant

environmental pollution as an outcome of mining activities, consequently impacting both the surrounding environment and public health [13,14].

On the EU 27 level, the mining and quarrying sector is the second main source of waste, accounting for 26.3% of the total waste generated, and at the Romania level of 24.3% [15,16]. In any case, this huge volume of material will require proper management and even more, the integration of extractive waste management into the mine planning for every mineral resource. Mining is considered one of the primary sources of heavy metal contamination in the environment. The extraction of precious metals and minerals releases hazardous metallic substances into the soil, water and atmospheric air, thereby augmenting their existing quantities [17,18].

“Heavy metals” is a general designation used in the environmental field as referring to metals and metalloids in the context of environmental pollution and their adverse effects on biota and ecosystems. Some authors even include nonmetals such as selenium in the general designation. There are numerous interpretations regarding the inclusion of specific elements and efforts to reach a consensus toward a more concise scientific definition for the designation are ongoing [19]. Some heavy metals are persistent and irreversible degrading the quality of water, atmosphere, and agriculture [20–22]. They also raise significant concerns regarding the health of humans, plants, animals, and microorganisms due to contamination and accumulation in their respective food chains [23–25]. Owing to these characteristics, heavy metals are non-biodegradable and persist in the environment for extended periods [26,27]. The primary heavy metals, metalloids and nonmetals causing substantial concern in this category include nickel (Ni), zinc (Zn), copper (Cu), lead (Pb), arsenic (As), selenium (Se), cadmium (Cd), chromium (Cr), manganese (Mn), cobalt (Co) and mercury (Hg) [28–30].

In this work, mining and other industrial sources contributions were evaluated as sources of heavy metal pollution in surface waters and beyond. Information regarding the closure and ecological restoration processes in selected mining areas of Romania, specifically in the counties of Maramureş, Suceava, Harghita, Alba, Hunedoara and Caraş-Severin was collected and summarised. From the authors’ more recent field studies, a few areas of interest were detailed with photos and other available data as an example of the general status of remediation for some of the former mining operations sites. Based on these findings, the authors’ opinion is that more should be carried out to limit the spread of the contaminants and restore the local environment toward a more favourable state.

2. Selected Areas of Interest

Romania is mentioned in various specialized documents as having made a special contribution to the world mining production, with various useful mineral substances, especially noble metals [31,32]. Romania has a rich history of mining activities, even spanning millennia, with notable mining districts that have contributed significantly to the nation’s economic development. Among these districts, the Apuseni Mountains, Baia Mare, Banat and East Carpathians regions stand out as historically significant centres of mining and mineral extraction.

The Apuseni Mountains, situated in the western part of Romania (Hunedoara and Alba counties), have been a region of mining activity for centuries, renowned for its diverse mineral resources, including gold, silver, lead, zinc, and other precious and base metals. The mining heritage of the Apuseni Mountains dates back to the Roman period, and over the centuries, the area has seen a complex interplay of mining techniques, from traditional practices to more modern methods [33,34]. The landscape of the Apuseni Mountains is dotted with mine shafts, galleries, and remnants of past mining endeavours, showcasing the historical importance of this district to Romania’s mining legacy. The Apuseni Mountains are geologically divided into two significant structural units: the South Apuseni Mountains, also known as the Metaliferi Mountains, and the North Apuseni Mountains. Mining activity, particularly in the Metaliferi Mountains, has a rich history dating back to the first centuries AD [34,35]. The presence of well-preserved mining works and numerous

archaeological discoveries provide evidence of early gold extraction in this region. It is interesting to observe that the Metaliferi Mountains are characterized by a dominance of gold compared to the northern Baia Mare mining district, where lead and zinc are the predominant metals. Mining activities have persisted continuously, with a growing interest in various other metals as time has passed. The South Apuseni Mountains are renowned for their abundance of non-ferrous and precious minerals, hosting some of Europe's world-class ore deposits. These notable deposits include already famous Roşia Montană, Roşia Poieni, Barza-Brad, Stăniş, Baia de Arieş and Săcărâmb mining sites [34,35].

The Baia Mare region, located in the northern part of the country (Maramureş County), has also played a pivotal role in Romania's mining history. Baia Mare has a rich history of extracting precious metals, including gold and silver. The city itself has been associated with mining since medieval times, and its mining heritage is reflected in its architecture and culture. The Baia Mare region was known for its thriving mining industry during various historical periods, contributing to both local prosperity and the broader economic growth of Romania. The northern portion of Romania, mostly occupied by the Baia Mare mining district, has a very complex geological structure that partly explains the first-class mineralogical richness of this area. Neogene volcanic formations played a prominent role in the formation of substantial ore deposits, primarily of the vein-type variety. Within this region, there is a notable presence of volcanic structures followed by shallow intrusive bodies in the Oaş and Gutâi Mountains. The vein deposits in the region are predominantly enriched with lead (Pb), zinc (Zn), and copper (Cu). They also contain, to a lesser degree, gold (Au) and silver (Ag). In some cases, these deposits exhibit distinct vertical zoning patterns [35,36]. However, along with the economic benefits, both districts have also faced environmental challenges due to mining activities. The Baia Mare region gained international attention in 2000 due to a significant cyanide spill, which led to widespread pollution of rivers and ecosystems. This incident underscored the importance of responsible mining practices and environmental safeguards in mining districts.

The Banat region, situated within the South Carpathians (Caraş-Severin County), holds historical significance as it is home to numerous ore deposits. What sets this region apart and contributes to its distinguished reputation is the presence of skarn deposits, a geological feature not found elsewhere in the entire Carpathian Mountain range. This skarn belt extends for approximately 70 km and encompasses mineral deposits of considerable importance, both in terms of industrial significance and the exceptional richness of minerals. In the northern part of the skarn belt, one primarily encounters pure skarn deposits, characterized by the dominance of iron ores, as exemplified by the Ocna de Fier deposit. Furthermore, in this northern area, there are skarn deposits where lead and zinc ores prevail, as evidenced by Dognecea. In the south area within the skarn belt, the composition of ores becomes more diverse, featuring a variety of metals. At Moldova Nouă, the ores in this region are polymetallic and exhibit a distinct abundance of copper. Remarkably, in this area, the copper-rich skarn ores coexist with porphyry copper ores [35].

The East Carpathians (Suceava and Harghita counties) comprise numerous geological units characterized by metamorphic rocks. These metamorphic rocks are partially overlaid by Triassic sedimentary rocks, Cretaceous and Paleogene flysch deposits, as well as Miocene molasse deposits. Additionally, these metamorphic rocks have experienced intrusive events. There is also a volcanic chain that spans from the Miocene to the Quaternary period, covering a substantial area from the Călimani Mountains in the north to the Harghita Mountains in the south. Except for the mineral deposits and occurrences associated with the Ditrău alkaline massif, most other occurrences typically are of disseminated mineralization [35]. The pyrite and copper–lead–zinc ore belt, situated within the Tulgheş metamorphic rocks, encompasses three significant deposits: (i) Fundul Moldovei, located near Câmpulung Moldovenesc; (ii) Leşu Ursului, situated east of Vatra Dornei; and (iii) Bălan, found in the southeast of Gheorghieni. These ore deposits are typically abundant in pyrite. The minerals within these deposits often exhibit porphyroblasts and, at times, display well-defined banding. In the East Carpathians, uranium ores have been discovered at four distinct

locations within the Paleozoic Tulgheş Series. The Tulgheş Series constitutes a basement unit characterized by low-grade metamorphism [32]. Situated near the structural boundary with the underlying flysch to the east, in the eastern Bistrita Mountains, lies the Crucea deposit, formerly known as Crucea–Botusana. This deposit currently holds the status of the largest uranium mine in Romania. Production activities at this site occurred over two distinct periods: from 1964 to 2016 and then recommenced in 2018. In total, the cumulative output from this location has amounted to a staggering 30×10^9 kg of uranium ore [37].

3. Results

In recent years, efforts have been made to balance the preservation of the historical significance of these mining districts with the need for sustainable practices and environmental protection. The Apuseni Mountains and Baia Mare continue to be areas of interest for researchers, historians and environmentalists, as they represent the complex relationship between mining, heritage, and environmental management in Romania.

In this paper, we selected as the study area the zone covered by six counties (Maramureş, Suceava, Harghita, Alba, Hunedoara and Caraş-Severin), where Figure 1 indicates 234 records (63.24% of the total metal deposits in Romania at that time), including the large deposit of Au and Ag at Rosia Montana, 201 small deposits (66.78% of the total number of small deposits) and 32 occurrences (47% of the total number of metallic mineral occurrences in the country [38–40]).

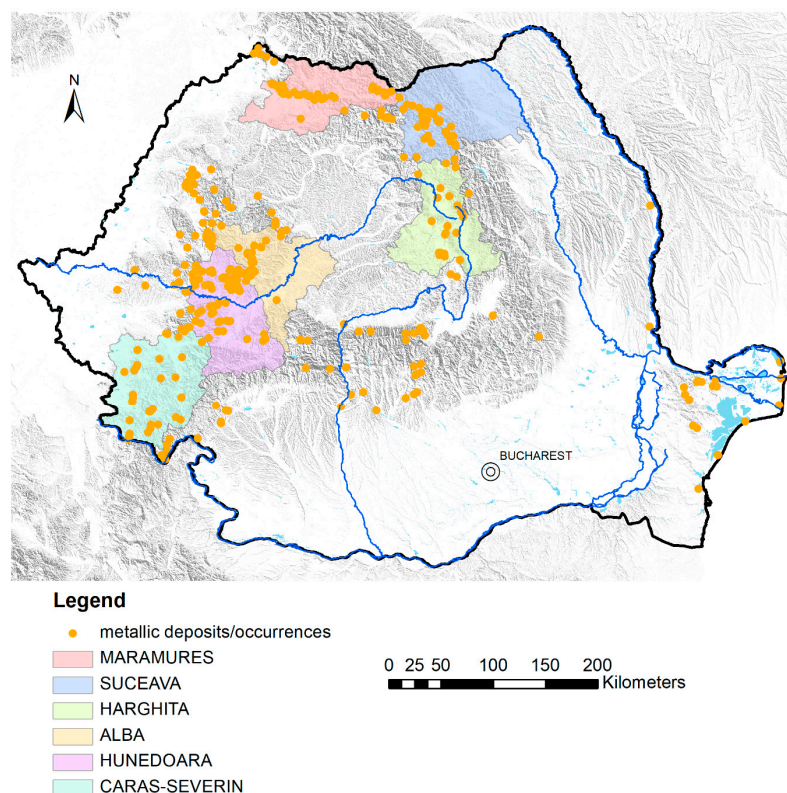


Figure 1. The deposits and occurrences of metallic mineral substances in Romania, at the level of the 1980s.

According to the data presented by Fodor [31], at the level of the 2000s, 112 operational mining targets were nominated in Romania for the continuation of the production activity, of which 68 with coal, 34 with metallic ores, 3 in the production of uranium and 7 salt mines. For the selected counties, Figure 2 shows the locations of mines for metallic mineral substances active at the level of the 2000s, while the percentages and types of exploited ores are presented in Figure 3. Romania has exploitable geological reserves totalling 40 million

tonnes of gold–Argentine ores, 90 million tonnes of polymetallic ores, 900 million tonnes of copper ores, 4 billion tonnes of salt, etc.

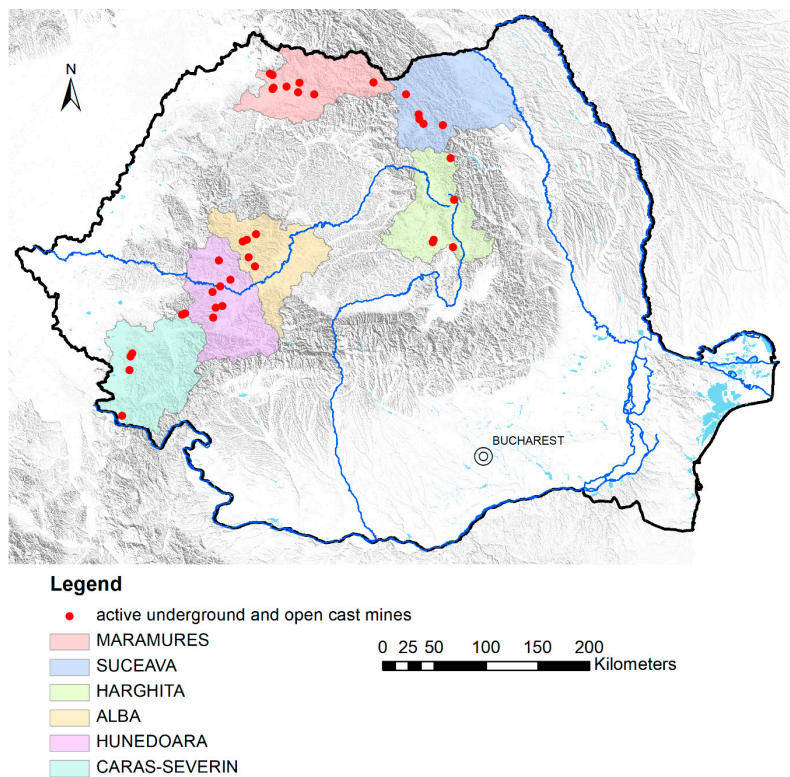


Figure 2. Exploitation sites of metallic mineral substances in Romania for selected counties, at the level of the 2000s.

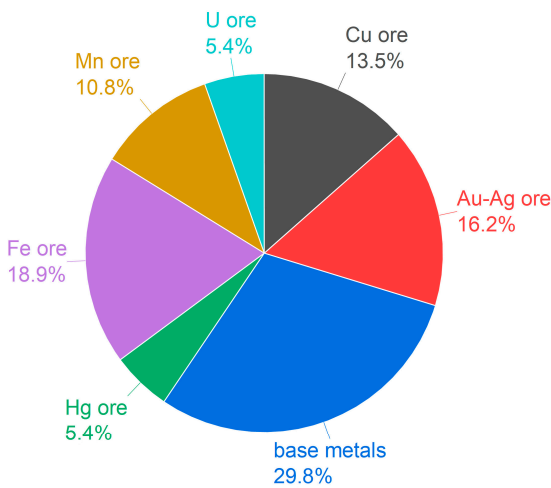


Figure 3. Percentage of types of ore exploited in Romania in the year 2000 for selected counties.

In Romania, around the year 2000, there were 35 mines in operation in the selected counties (Table 1).

Table 1. Metallic mineral substances in exploitation in Romania around the year 2000 [32].

County	Location	Substance
Alba	Roşia Poieni	Cu ore
	Roşia Montană	Au, Ag ore
	Baia de Arieş	base metals (Cu, Pb, Zn) and Au
	Zlatna	Au, Ag ore
	Izvorul Ampoiului	Hg ore
Caraş-Severin	Moldova Nouă	Cu ore
	Ocna de Fier	Fe ore
	Ruşchiţa	Fe ore
	Dognecea	Fe ore
	Ruşchiţa	base metals (Cu, Pb, Zn)
	Ciudanoviţa	U ore
Harghita	Lueta	Fe ore
	Vlăhiţa	Fe ore
	Bălan	Cu ore
	Sântimbru	Hg ore
	Tulgheă	U ore
Hunedoara	Teliuc	Fe ore
	Ghelar	Fe ore
	Deva	Cu ore
	Barza	Au, Ag ore
	Certej	Au, Ag ore
	Muncelu Mic	base metals (Cu, Pb, Zn)
	Boiţa Hateg	base metals (Cu, Pb, Zn)
Maramures	Baia Borşa	Cu ore + base metals (Pb, Zn)
	Baia Sprie	base metals (Cu, Pb, Zn)
	Băiuţ	base metals (Cu, Pb, Zn)
	Cavnic	base metals (Cu, Pb, Zn)
	Ilba	base metals (Cu, Pb, Zn)
	Nistru	base metals (Cu, Pb, Zn)
	Săsar	Au, Ag ore
	Şuitor	Au, Ag ore
Suceava	Vatra Dornei	Mn ore
	Iacobeni	Mn ore
	Argestruţu	Mn ore
	Dadu-Cârlibaba	Mn ore
	Leşu Ursului	Cu ore + base metals (Pb, Zn)

At the level of 2021, for the selected counties, there are just 16 exploitation sites of metallic mineral substances in Romania, according to the list of deposits with exploitation licenses (Figure 4).

From the list of deposits with exploitation licenses in the selected counties (Table 2), in 2023 only the deposits of Roşia Poieni and Roşia Montană were in operation.

From Table 2, we can emphasize the fact that the U (uranium) ore deposits and Au-Ag (gold–silver) ore deposits in Romania also have common sulphides and certain sulpho-salts in their mineral composition, which leads to the presence of heavy metals in the waste products.

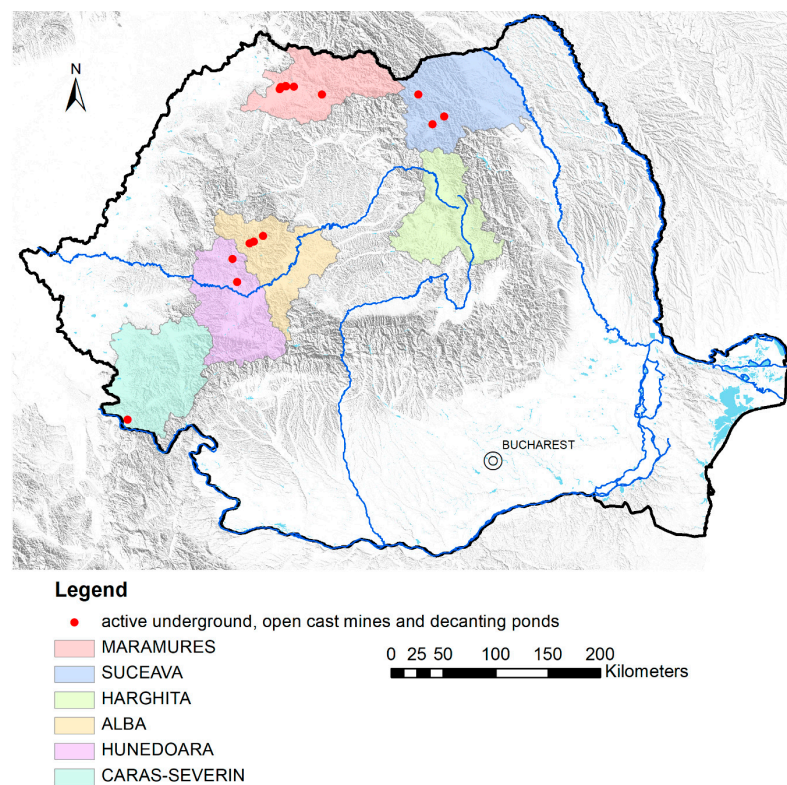


Figure 4. Exploitation sites of metallic mineral substances in Romania for selected counties, at the level of 2021.

Table 2. Exploitation Licenses from National Agency for Mineral Resources ANRM [41] at the year 2021 level.

County	Location	Substance
Alba	Roșia Poieni Roșia Montană Baia de Arieș	Cu ore and ore with low Cu content Au and Ag ore Au and Ag ore
Caraș-Severin	Moldova Nouă—banatites quarry	Low content Cu ore
Hunedoara	Rovina Certej	Cu ore with Au Au and Ag ore
Maramureș	Baia Sprie Băiuț Săsar Decanting pond Aurul Săsar Aurul S.A. processing plant Decanting pond—central floatation Decanting pond Meda	base metals base metals Au and Ag ore mining waste product mining waste product mining waste product mining waste product
Suceava	Ulm Crucea Botușana Mănăila	Mn ore U ore base metals

The process of mine closure and remediation started in 1998 and it was carried out in eleven phases, until 2010, being regulated by government decisions (HGs), listed in Table 3.

Table 3. Government Decisions regarding the process of mine closure and remediation.

Law	Phase	Official Monitor No./Date
HG 816/1998 [42]	I	443/20 November 1998
HG 17/1999 [43]	II	14/20 January 1999
HG 720/1999 [44]	III	443/13 September 1999
HG 493/2000 [45]	IV	284/22 June 2000
HG 602/2001 [46]	V	369/9 July 2001
HG 898/2002 [47]	VI	645/30 August 2002
HG 926/2003 [48]	VII	602/25 August 2003
HG 1846/2004 [49]	VIII	1112/27 November 2004
HG 1008/2006 [50]	IX	692/14 August 2006
HG 644/2007 [51]	X	469/12 July 2007
HG 997/2010 [52]	XI	692/15 October 2010

The Government Decisions (HG) referred to the closing and remediation of the mine areas, listed the mines to be closed and the costs of preparing the documentation, closing, and ecological restoration actions for each mine, as well as the costs of conservation (where it was the case). There is an obligation of a post-closure monitoring program, mentioned also in the Mining Law [42] in article 53, and the monitoring implementation is paid for by the license holder. In the case of national mining companies and societies, the monitoring program is performed with funds from the State budget, ordered by the Ministry of Finances and its specialized directorates.

3.1. Case Studies Detailing the Current Status of Closure Processes

Due to the scarcity of scientific publications regarding the local environmental quality and the actual status of the ecological remediation works for the numerous closed mining sites, two specific examples from the areas of interest were detailed with previously unpublished photos and other available data from the authors' more recent field studies.

One of the representative mining areas is located in the Banat region, in Caraş-Severin County, at Moldova Nouă, very close to the Danube River. The exploitation was dated since 1965 and included: (i) underground mines (Florimunda, Suvarov, Valea Marea, Gârâna, and Vărad), presently all closed, most of them since 2006, where the mineralisation was contained in skarns; and (ii) an open-cast mine (quarry) for the banatites containing low content Cu mineralisation (opened in 1974) and, presently, still having an active exploitation license (Figure 4 and Table 2) to the North of the mentioned underground mines. Banatite is a local geological term used in Romania and Serbia for the types of intrusive magmatic rocks (granodiorites) existent in Banat and Western Carpathians (Apuseni Mts.), ranging from granites in the top to the diorites at the bottom of the crystallisation sequence. The copper ore that can be extracted at Moldova Nouă represents 30% of the copper reserves of Romania. The porphyry copper deposit is estimated at around 500 Mt with an average grade of 0.35% Cu [53], the second one in Romania for Cu after Roşia Poieni. Copper is an essential element for the nutrition of plants and animals, in small quantities stimulating growth, but it is poisonous in large quantities. During alteration and sedimentation, copper sulphides are easily oxidizable, turning into oxides and sulphates, and copper turns into mobile copper in solution. Copper can precipitate in environments with high pH, generating enrichments in the cementation zone, in the form of chalcocite and chalcopyrite. The amount of copper remaining in the solution is captured in the hydrolysed sediments through adsorption phenomena.

The copper extraction posed numerous environmental problems caused by the dust coming from the waste dumps (Figure 5), which was blown by the strong winds (reaching sometimes 120 km/h) toward the neighbouring country (Serbia), by the acid mine drainage and contamination of the soil and Danube River with heavy metals (Zn and Ni). Over 30 years of ore extraction and processing led to the occurrence of three large tailings lakes

(with a total area of 306 ha), which represent a big pollution source in the zone, being a cause for transboundary conflicts with Serbia.



Figure 5. Moldova Nouă—dump with specific vegetation (photo taken in autumn 2020) rehabilitated without much success, still showing areas of bare waste that produce dust during very windy days.

In a study carried out in 2009 [54], the measurements performed in the Moldova Nouă mining perimeter pointed out high concentrations of heavy metals in the waste heaps, and lower levels in the tailing ponds, except for copper (Cu), which is present everywhere well above the normal limit of 20 ppm from the Order No. 756 [55]. The effect of heavy metal pollution, deposited by airborne suspensions, is felt in soils located as far as 2 km from the present banatites quarry (Figure 6), with values exceeding the intervention threshold for sensitive crops for Cr, Cu, Mo, Ni, Pb and Cd. The impact of dust and sulphur dioxide (SO₂) on the air is insignificant, except on windy days, which disperses dust from the tailing pond.



Figure 6. Moldova Nouă—banatites quarry in exploitation (photo taken in autumn 2020).

The second case (Figure 7), in Maramureş County, highlights the environmental problems of the waste ponds at Târgu Lăpuş, formed by depositing the tailings from the Băiuţ polymetallic ore processing unit.



Figure 7. Târgu Lăpuș waste pond from Maramureș County (autumn 2016–2018): (a) surface water drainage; (b,c,e) suffusion processes in the extractive waste deposition area; (d) void created by internal collapse; (f) crest of the waste dump.

The ponds are composed of settled solids and water freed from the waste itself and supplemented by inflowing groundwater and direct precipitations. Part of the freed water remains in the supernatant pond and was removed by evaporation during long-term exposure, depending on the local weathering processes. The excess freed water, decanted and drained from the pond, was lost by underground infiltration or discharged into nearby surface-receiving water bodies, without any treatment. Environmental problems have occurred decades after depositing the tailings, due to the influence of the waters that cross the settling pond (on the surface and inside), reach the natural collector in the vicinity and partially change its chemical parameters. Surface water drainage, especially in mountainous areas with precipitation, has an essential role in maintaining the isostatic balance, with suffusion processes being common in the extractive waste deposition area. In the void created by the internal collapse of the deposited material, its different compositional and textural variations can be easily observed, with water management in the waste pond area being a top priority to ensure the long-term structural stability of the mineral residues. Pyrite, the most commonly encountered mineral in mining waste, is responsible for generating acid drainage [56,57]. At this location, the global contamination of water systems is one of the critical environmental-related issues associated with increased industrialization and natural and mineral resource exploitation [58].

3.2. The National and International Legislative Framework

Mining operations are inherently associated with environmental impacts and effects on human health, spanning from the exploration phase to closure and post-closure activities. Environmental concerns within the mining industry necessitate a systematic approach built upon the knowledge acquired from regions with long mining traditions and better environmental performance in the world. Viable environmental management techniques have been applied to exploited areas within Romania. Internationally, guidelines, regulations, and procedural codes have emerged, particularly from the 1990s onward, outlining the fundamental principles of environmental management in the mining sector. In Romania, the Environmental Protection Law no. 137/1995 establishes the principles and strategic elements that ensure sustainable development [59].

The main legislative components pertaining to environmental protection are the Environmental Protection Law, the Water Law, and the Mining Law. The Mining Law 85/2003 regulates all mining activities in Romania. The Ministry of Economy, Trade, and Business Environment (MECMA) holds the responsibility for strategic planning and policy development concerning the mining sector [60]. However, the competent authority for implementing the provisions of the Mining Law is the National Agency for Mineral Resources. The primary focus of the Mining Law is directed towards the management of exploration and exploitation activities.

Mining activities are subject to a national legal framework harmonized with the European one, which regulates the opening, operation, and post-mine closure activities to ensure minimal disruption to the environment. The necessary study for opening a mining operation is conducted in accordance with Government Decision No. 1213/2006, which establishes the framework procedures for assessing the environmental impact of specific public and private projects [61]. The management of waste generated from mining activities is regulated by Government Decision No. 445/2000 [62], which outlines procedures for both surface and underground quarries and mines, as well as the storage of overburdened and impoverished materials. Mining operations generate waste during excavation, physical and chemical processing for concentrate production, and ore stripping. The management and tracking of this waste are governed by Decision No. 856 of 16 August 2002 [63], also by the Extractive Waste Directive (EWD; Directive, 2006/21/EC) and the Best Available Techniques Reference Document for the Management of Waste from Extractive Industries, in accordance with Directive 2006/21/EC—MWEI BREF (review of the Reference Document for Management of Tailings and Waste-Rock in Mining Activities—MTWR BREF) [12].

Water management is a top priority in mining activities due to the leachate resulting from washing impoverished or overburdened geological material, residual waters from chemical processing of mining concentrates, runoff from heaps, and pumped groundwater, all of which is ultimately discharged into surface waters. Indirect discharge through soil is also possible, especially after mine closures. Therefore, the legislative framework governing mining activities also encompasses the protection of groundwater and surface waters [64–68].

The management of soil in mining activities is regulated by Government Decision No. 756/1997, which establishes the maximum permissible values for hazardous substances resulting from mining activities [55].

Assessment of the data available at the EU level shows that even with a series of EU regulations and guidelines in place, the available reports are still not coherent and sufficient enough from the point of view of its scope [16].

3.3. The Existing Best Practices in the Mining Sector

The subject of successful mine closure holds significant importance for all parties involved:

- For mining companies, it addresses the reduction of environmental, social and security risks in the area, as well as ensuring the necessary funds for site rehabilitation. These actions are detailed and explained [12] and correspond to Generic Best Available

Techniques (BAT) on corporate management, including the necessity of extractive waste characterization, identification of extractive waste site and management options, Environmental Risk and Impact Evaluation and waste hierarchy;

- For authorities and the government, it addresses acute environmental issues and contributes to the social and economic revitalization of extensive regions;
- For communities, it helps avoid local economic and social collapse.

In terms of environmental factors' quality, pollution and sometimes irreversible degradation resulting from mining activities provide strong arguments for the implementation of correct ecological restoration standards and policies [55,67,68].

Embracing best practices in mining entails the adoption of environmental management by mining companies, as well as good practices concerning communication with the local community, accident prevention, transparent decision making, annual report publications made accessible to the public, continuous social dialogue, adoption of the latest technologies and collaboration with research and development sectors and relevant universities. In the BAT there are also included mitigation and safety measures to ensure the short-term and long-term structural stability of the extractive waste deposition areas and the physical and chemical stability of extractive waste. Other measures are intended for preventing or minimizing water status deterioration, air and soil pollution or other risks to human health, flora and fauna, related to noise emissions, odour nuisance and visual impacts [12].

The investments in extractive activities need to protect the environment and human health, to avoid the supplemental costs of remediations and potential accidents, which could be many times higher than the prevention costs. Proper planning, design and operation are imperative to avoid clean-up and remediation costs due to Extractive Waste Facilities failures. This aims to enhance performance standards and ensure that initiated projects and investments have the least possible impact on the environment.

The EC and Member States discuss environmental issues in the relationship with the management of mineral wastes from the mining industry and analyse the applicability of both emerging and established techniques to their management. Addressing in deep the relevant issue of mineral waste management could help improve practices in the mining industry, as well as gathering data intended for mining operators, researchers and academics interested in mineral waste management.

3.4. Heavy Metals Content in Surface Waters Caused by Mining Activities

In Romania, the situation of heavy metal pollution for the year 2022 (Table 4) shows that the sectors of activity with significant contributions to total heavy metal discharges in wastewater are (i) domestic wastewater collection and treatment; (ii) chemical production; (iii) mining industry; and (iv) metallurgical industry/metal construction [69]. Taking into account only the contribution of the mining industry, it can be seen that the heavy metals found in the surface waters in Romania are: arsenic, copper, lead and zinc.

The share of the mining industry for Pb pollution is 1.17%, smaller than that given by the industries of urban wastewater collection and purification (87.99%), and production and supply of electricity, heat, and hot water (9.42%). Zinc pollution mainly comes from urban wastewater collection and purification (64.87%), the mining industry (23.28%), and metallurgy/construction of metal structures (10.39%). It should be mentioned that Mureş River crosses both Alba and Hunedoara counties, where Figure 3 indicates the operating open cast mines (Roşia Poieni and Roşia Montana), while Siret River collects tributaries from Suceava County.

Another conclusion would be that mining is not always the main source of pollution with heavy metals in surface waters, as other industrial or domestic sources also make important contributions.

Table 4. The situation of surface water heavy metals loadings and the percent estimated to be caused by the mining industry.

Metal	Hydrographic Basin	Quantity (%)	Total (Tonnes) in Romania	Mining Industry Contribution to the Total (%)
As	Mureş River	89.76	0.025	90.67
Cu	Mureş River	78.43	39.69	78.68
Pb	Argeş River	38.40	1.46	1.17
	Mureş River	32.17		
	Bega–Timiş Rivers	8.69		
Zn	Argeş River	32.77	85.62	23.28
	Mures River	23.18		
	Siret River	17.31		

3.5. Effects of Pollutants on the Environment

Mining waste consists of mining waste rock, processing waste, traces of variously sized ores, diverse compositions and often potentially hazardous substances. These deposits represent a continuous source of environmental pollution in the studied region, as well as a potential source of risk for both the environment and the human communities in the area. The impact of waste rock heaps on the environment occurs throughout the entire life cycle of these deposits: before, during and after the actual mining operations. The impact on the land includes the removal of vegetation, the construction of access roads and necessary infrastructure, the occupation of land with large quantities of waste rock resulting from ore processing activities, deposition in heaps and tailings ponds, excessive water resource usage leading to excess acid water generation, destruction of natural habitats and pollutant emissions in various forms into the surrounding ecosystem.

Monitoring of environmental factors in closed mining areas involves tracking the evolution of air quality and meteorological conditions, the quality of water discharged from the mining area and the receiving water bodies, acid runoff from the mine, soil and vegetation quality, noise and vibration levels during closure and rehabilitation works and stability and condition of land surfaces within waste rock deposits (tailings ponds, waste rock heaps). Mining waste deposits can also contribute to atmospheric pollution, especially during longer dry periods when fine particles can be carried by the wind and transported to the surrounding area. Revegetation of the excavations and waste dumps helps to limit this type of pollution toward an insignificant impact.

4. Discussion

According to reports from 2017, Romania holds the record for the highest percentage of mining waste accumulated from the extractive industry, accounting for over 85% of the total waste in Romania (the European average is slightly above 25%), much of which originates from historical mining activities [70]. Prior to 1989, the mining industry in Romania pursued a development strategy rooted in the concept of self-sufficiency [71]. The process of closure and ecological restoration of certain mining sites commenced in Romania in 1998, in accordance with the prevailing specialized legislation. The closure and ecological restoration of waste rock piles and tailings ponds are undertaken with consideration for the overall stability of these structures, as well as their integration into the surrounding environment [72,73]. This includes the reclamation of land areas occupied by mining waste deposits. Unfortunately, up to the present moment, the technical projects, technical assistance, and execution of closure and ecological restoration works have only addressed the complex environmental issues in the mining domain in a limited number of sites. Regarding waste rock piles, ecological restoration methods have been applied to only 65 out of a total of over 500 piles [74–76].

One of the priority tasks assumed by the Romanian Government through the Treaty of Accession to the European Union is taking responsibility for the restoration of the

environment affected or altered over time by the impact of extractive activities. This is carried out through the development and funding of well-founded annual programs aimed at the effective implementation of the Ecological Reconstruction Process for sites impacted by mining activities. Based on the provisions of Emergency Ordinance no. 51/1997 regarding certain measures for the conservation and closure of mines, the conservation and closure of non-profitable mines and quarries started in 1998 [77]. This activity was initially regulated by Mining Law no. 61/1998, which was subsequently amended by Law no. 85/2003 and Government Decision No. 1208/2003 for the approval of implementing norms [60,78,79].

Starting from 1998, through 11 Government resolutions, the permanent closure, conservation, and post-closure environmental monitoring of 556 mines were approved, located within the administrative territory of 227 local communities in 28 counties (from a total of 41). Within these mining sites, a significant number of industrial waste deposits fall under the scope of prevailing legislation concerning the storage and secure containment of hazardous waste. This includes 78 tailings ponds with a total stored volume of 341.31 million cubic meters and an area covering approximately 1770 hectares, as well as 675 mining waste heaps with a volume of 3101.92 million cubic meters and an area of approximately 9260 hectares [76].

For these sites, it is imperative to ensure the ongoing stability of the mining deposits over time and to conduct essential activities and measures for securing them. This involves addressing 2504 surface-related mining structures (such as galleries, shafts, and adits) that allow access to the underground atmosphere, which is artificially maintained. Mining sites where the extraction of valuable mineral substances has ceased, do exhibit a high degree of associated risk due to subterranean voids that can result in the accumulation of toxic and potentially explosive gases, subsidence phenomena, uncontrolled surface collapses and significant landslides. The stability of hazardous waste deposits is also compromised, posing catastrophic consequences for adjacent communities and the surrounding environment, with potential transboundary effects. Delays regarding the execution of greening works on sites affected by the mining industry occurred both as a consequence of the underfunding of the closure and greening projects and because of the major risks inherent at the mining sites where hazardous mining wastes are stored [74–76]. Another difficult issue is represented by the uncertain legal situation of the lands on which closure and greening works are being carried out. The execution of the modernization works of the mine water treatment stations located in the patrimony of the Ministry of Economy is conditioned by the clarification of the legal regime of the lands on which they are located. The delays in this approach are compromising the greening works already carried out [74–76].

The recovery of the residual valuable minerals from extractive waste is not a widely applied practice in the EU, but could represent the key contribution to a more circular economy. Without the appropriate management of the extractive waste, this activity may be neither economic nor sustainable. Aligned with the European Union's Circular Economy Package, the intention is to harmonize Directive 2006/21/EC with the Circular Economy Package's provisions [80]. This alignment involves incorporating an annual target for the management of mining waste. Mining waste holds a distinct status based on the category it falls into (hazardous or non-hazardous). The potential treatment methods vary depending on this categorization, encompassing mechanical, physical, biological, thermal, or chemical processes, or a combination thereof, applied to these mineral resources.

Contaminated sites often experience physical disruptions such as geotechnical instability and erosion due to climatic factors, alongside biological alterations and chemical contamination. Cleaning and remediating locations tainted by mining waste represent significant environmental challenges in this century. Minimizing the environmental impacts of mining activity (including the processing stage) contributes to improving the social perception and acceptance of mineral resource extraction in any region. One of the primary steps toward achieving this goal involves evaluating ecological resources (including receptors,

like humans), ecosystem structure and function, as well as the levels and consequences of contamination.

Mining activity brings about profound modifications to the components of the environment. Human activity, as a morphogenetic agent, has become the most significant factor in shaping the landscape. Soil contamination with heavy metals has become a growing concern due to their persistence and environmental toxicity, with impacts on human health and the environment. Soil remediation is a crucial process to help safeguard the environment and human health.

A soil remediation technique known as soil replacement reduces pollutant concentrations to an acceptable natural limit. Soil spading and soil replacement are two methods used in soil remediation to mitigate the effects of soil contamination by heavy metals or other pollutants. Soil spading, also known as soil turnover or soil cultivation, involves digging and mixing polluted soil with clean soil to decrease contaminant concentrations. This method is often employed for large areas of contaminated soil, where removing and replacing the entire contaminated soil layer is unfeasible. Soil spading aids in soil aeration and promotes microbial activity, which can accelerate the natural breakdown of contaminants in the soil.

4.1. Heavy Metal Pollution Remediation Strategy

Recommendations for ecological restoration of an area require the assessment of the natural background, as often in mining areas where mineral resources are found at various depths, minerals may appear as outcrops on the surface, potentially leading to elevated background values of certain substances in the environment.

Under these circumstances, ecological restoration and/or depollution of a site may not be achievable at the parameters set by current legislation if they are more stringent than the natural characteristics of the local surrounding environment.

4.2. Closure and Ecological Reconstruction Procedures Implemented

The use of systematic management procedures can be a powerful instrument for controlling the environmental impact in the mining sector.

In the execution phase of closure and ecological reconstruction of the mines, the following works should be carried out:

- (i) Monthly monitoring program, including monitoring the quality of discharged water and watercourses, as well as discharge points where temporary impacts from the works are likely; monitoring sediment in watercourses and discharge points where temporary impacts from the works are likely; and monitoring the stability of terrain and landfills where temporary impacts from the works are likely.
- (ii) Daily monitoring program, including noise and vibrations resulting from remediation operations, and groundwater level in processing residues in case of automated recording.

The closure plan outlines the vision for the final outcome of the process and establishes specific objectives for implementing that vision. The closure plan should also encompass considerations such as counselling for mine personnel regarding re-employment options during the period leading up to the cessation of activities.

In the warranty and post-closure phase of the mines, the final monitoring scheme for post closure should be developed based on the results of monitoring during the pre-closure and ecological restoration phases. As a general rule, this monitoring scheme will be simpler and less frequent compared to the one in the pre-closure phase. Although some mining sites have undergone ecological restoration interventions, many currently closed sites still constitute active environmental distress sources as may be seen in the above-presented case studies. Future efforts, both at the policymaker level and the scientific implementation levels are needed for the allocation of proper funding and technologies to adequately restore a more natural ecological status to the affected areas.

4.3. Strategies for Anthropogenic Relief Rehabilitation

Rehabilitation entails not only restoring the previous state but also introducing new forms and ecosystems, and the existence of valuable biotopes in areas with mining activities being the subject of numerous studies [81,82]. The recent decades brought an intensification of anthropogenic influences, which gave rise to a new morphology characterized by relief inversions, as well as a restructuring and rearrangement of dislocated materials.

Impact and risk assessment represents an effective strategy to address environmental quality concerns and to identify local, regional, and national priorities. Ecological impact assessment is crucial for the process of remediation and ecological reconstruction, forming the basis of management practices.

Phytoremediation is a cost-effective and ecologically sound approach that can be used alone or in conjunction with other remediation techniques. However, phytoremediation may lead to contaminated biomass, which requires proper disposal to prevent further environmental pollution. Potential environmental impacts of both the phytoremediation process itself and the disposal of resulting contaminated biomass must be considered. While phytoremediation is a successful and efficient strategy for removing pollutants from the environment, it does have limitations and disadvantages that are not fully understood due to limited exploration and research carried out mainly in controlled environments. If soil toxin levels are too high, this can affect plant growth and the ability to remediate the site. Additionally, certain plant species may be more suitable for specific types of contamination than others, and selecting the wrong plant species could result in lower phytoremediation efficiency. Moreover, there's a risk of increased contaminant uptake by plants, which could pose potential health risks if consumed by animals or humans. Finally, the economic feasibility of phytoremediation could be limited due to the associated costs of plant cultivation, monitoring, maintenance, and proper disposal of contaminated biomass.

5. Conclusions

On one hand, it is impossible for humanity to continue its actual living standards and cope with the new technological challenges without mining. All the new technologies, including those related to renewable energies, require components that can be obtained only from mineral resources. On the other hand, for the benefit of humankind, the mining operations should be carried out with the utmost care, in order to disturb as little as possible the environment and to not cause harm to human health. However, some disturbances will always happen, given the nature of the process.

All the available data studied for this paper showed that there are still environmental problems in the areas of closed and remediated mines of the six studied counties. This observation could be extended to the rest of Romania's counties.

Monitoring the closed mines and the discharges of active mines should be carried out regularly, and the results made publicly available, because often it is very difficult to find relevant data on this issue.

The referenced materials show that mining is not always the main source of pollution with heavy metals in surface waters, important contributions also being brought by other industrial or domestic sources.

In mining areas where mineral resources are found at various depths, minerals may appear as outcrops on the surface, potentially leading to elevated background values of certain substances in the environment. Under these circumstances, ecological restoration of a site may not be achievable or sustainable at the parameters set by the current legislation, if they are more stringent than the natural characteristics of the surrounding area.

This study concludes that the mining sector in Romania, although it has the necessary techniques and technologies for the ecological rehabilitation of degraded lands related to the Extractive Waste Facilities and the elimination of negative impacts on the environment and public health, has not yet been able to fully concretize its remediation efforts. Due to the scarcity of scientific publications detailing the current local environmental status and the ecological restoration efforts for the closed Romanian mining activities, the authors

would like to encourage a greater scientific interest in the investigation and remediation efforts for these affected areas.

Author Contributions: Coordination, conceptualization, methodology, writing—original draft preparation, V.M.R.; resources, A.M.V., V.E.A. and V.M.C.; writing, A.M.V., V.E.A., V.M.C., G.D., A.A.I. and A.E.F. All authors have read and agreed to the published version of the manuscript.

Funding: This research received no external funding.

Institutional Review Board Statement: Not applicable.

Informed Consent Statement: Not applicable.

Data Availability Statement: The data are unavailable due to privacy restrictions.

Conflicts of Interest: The authors declare no conflict of interest.

References

- Segura-Salazar, J.; Tavares, L.M. Sustainability in the Minerals Industry: Seeking a Consensus on Its Meaning. *Sustainability* **2018**, *10*, 1429. [CrossRef]
- Žibret, G.; Lemiere, B.; Mendez, A.-M.; Cormio, C.; Sinnett, D.; Cleall, P.; Szabó, K.; Carvalho, M.T. National Mineral Waste Databases as an Information Source for Assessing Material Recovery Potential from Mine Waste, Tailings and Metallurgical Waste. *Minerals* **2020**, *10*, 446. [CrossRef]
- Dino, G.A.; Mehta, N.; Rossetti, P.; Ajmone-Marsan, F.; De Luca, D.A. Sustainable approach towards extractive waste management: Two case studies from Italy. *Resour. Policy* **2018**, *59*, 33–43. [CrossRef]
- Zhang, B.; Yao, J.; Lee, H.J. Economic Impacts and Challenges of Chinese Mining Industry: An Input–Output Analysis. *Front. Energy Res.* **2022**, *10*, 784709. [CrossRef]
- Akoto, O.; Yakubu, S.; Ofori, L.A.; Bortey-Sam, N.; Boadi, N.O.; Horgah, J.; Sackey, L.N.A. Multivariate studies and heavy metal pollution in soil from gold mining area. *Heliyon* **2023**, *9*, e12661. [CrossRef]
- Khobragade, K. Impact of Mining Activity on environment: An Overview. *Int. J. Sci. Res. Publ.* **2020**, *10*, 784–791. [CrossRef]
- Benidire, L.; Benidire, L.; Boularbah, A. Impacts of mining activities on soil properties: Case studies from Morocco mine sites. *Soil Sci. Annu.* **2020**, *71*, 395–407. [CrossRef]
- Emmanuel, A.Y.; Jerry, C.S.; Dzigbodi, D.A. Review of Environmental and Health Impacts of Mining in Ghana. *J. Health Pollut.* **2018**, *12*, 43–52. [CrossRef]
- Mabey, P.T.; Li, W.; Sundufu, A.J.; Lashari, A.H. Environmental Impacts: Local Perspectives of Selected Mining Edge Communities in Sierra Leone. *Sustainability* **2020**, *12*, 5525. [CrossRef]
- Fodor, B.; Tóth, G.; Somody, A.; Szebényi, G. Mining, Mining Waste and Related Environmental Issues: Problems and Solutions in Central and Eastern European Candidate Countries—Joint Research Centre of the European Commission, Ispra, EUR 20868 EN. ISBN 92-894-4935-7. 2004. Available online: http://minerals4eu.brgm-rec.fr/sites/default/files/Fodor%20et%20al_2004.pdf (accessed on 8 July 2023).
- Wang, Q.; Cai, J.; Gao, F.; Li, Z.; Zhang, M. Pollution Level, Ecological Risk Assessment and Vertical Distribution Pattern Analysis of Heavy Metals in the Tailings Dam of an Abandon Lead–Zinc Mine. *Sustainability* **2023**, *15*, 11987. [CrossRef]
- Garbarino, E.; Orveillon, G.; Saveyn, H.; Barthe, P.; Eder, P. *Best Available Techniques (BAT) Reference Document for the Management of Waste from Extractive Industries, in Accordance with Directive 2006/21/EC*, EUR 28963 EN, JRC Sciences for Policy Report; Publications Office of the European Union: Luxembourg, 2018; ISBN 978-92-79-77178-1. [CrossRef]
- Shengo, L.M. Review of Practices in the Managements of Mineral Wastes: The Case of Waste Rocks and Mine Tailings. *Water Air Soil Pollut.* **2021**, *232*, 273. [CrossRef]
- Jordan, G.; D’Alessandro, M. *Mining, Mining Waste and Related Environmental Issues: Problems and Solutions in Central and Eastern European Candidate Countries*; Joint Research Centre of the European Commission: Ispra, Italy, 2004; p. 208.
- Neagoe, A.; Iordache, V.; Fărcășanu, I.C. *Remediarea Zonelor Poluate*; Editura Universității din București: București, Romania, 2011.
- Kulczycka, J.; Dziobek, E.; Szmilyk, A. Challenges in the management of data on extractive waste—The Polish case. *Miner. Econ.* **2020**, *33*, 341–347. [CrossRef]
- Management of Mining, Quarrying and Ore-Processing Waste in the European Union, BRGM 2001; p. 79. Study Made for DG Environment, European Commission. Available online: <https://ec.europa.eu/environment/pdf/waste/studies/mining/0204finalreportbrgm.pdf> (accessed on 8 July 2023).
- Demková, L.; Jezný, T.; Bobuľská, L. Assessment of soil heavy metal pollution in a former mining area—Before and after the end of mining activities. *Soil Water Res.* **2017**, *12*, 229–236. [CrossRef]
- Hazrat, A.; Ezzat, K. What are heavy metals? Long-standing controversy over the scientific use of the term ‘heavy metals’—Proposal of a comprehensive definition. *Toxicol. Environ. Chem.* **2018**, *100*, 6–19. [CrossRef]
- Briffa, J.; Sinagra, E.; Blundell, R. Heavy metal pollution in the environment and their toxicological effects on humans. *Heliyon* **2020**, *8*, e04691. [CrossRef]

21. Türkmen, D.; Bakhshpour, M.; Akgönüllü, S.A.; Denizli, A. Heavy Metal Ions Removal from Wastewater Using Cryogels: A Review. *Front. Sustain.* **2022**, *3*, 765592. [CrossRef]
22. Singh, A.; Sharma, A.; Verma, R.K.; Chopade, R.L.; Pandit, P.P.; Nagar, V.; Aseri, V.; Choudhary, S.K.; Awasthi, G.; Awasthi, K.K.; et al. Heavy Metal Contamination of Water and Their Toxic Effect on Living Organisms. *Toxic. Environ. Pollut.* **2022**. [CrossRef]
23. El Ati-Hellal, M.; Hellal, F. Heavy Metals in the Environment and Health Impact. *Environ. Health* **2021**. [CrossRef]
24. Rahman, A.; Yoshida, K.; Islam, M.M.; Kobayashi, G. Investigation of Efficient Adsorption of Toxic Heavy Metals (Chromium, Lead, Cadmium) from Aquatic Environment Using Orange Peel Cellulose as Adsorbent. *Sustainability* **2023**, *15*, 4470. [CrossRef]
25. Mourinha, C.; Palma, P.; Alexandre, C.; Cruz, N.; Rodrigues, S.M.; Alvarenga, P. Potentially Toxic Elements' Contamination of Soils Affected by Mining Activities in the Portuguese Sector of the Iberian Pyrite Belt and Optional Remediation Actions: A Review. *Environments* **2022**, *9*, 11. [CrossRef]
26. Abd Elnabi, M.K.; Elkaliny, N.E.; Elyazied, M.M.; Azab, S.H.; Elkhailifa, S.A.; Elmasry, S.; Mouhamed, M.S.; Shalamesh, E.M.; Alhorieny, N.A.; Abd Elaty, A.E.; et al. Toxicity of Heavy Metals and Recent Advances in Their Removal: A Review. *Toxics* **2023**, *11*, 580. [CrossRef] [PubMed]
27. Vardhan, K.H.; Kumar, P.; Panda, R. A review on heavy metal pollution, toxicity and remedial measures: Current trends and future perspectives. *J. Mol. Liq.* **2019**, *290*, 111197. [CrossRef]
28. Renu, Y.; Rahul, K.; Rajender, K.G.; Taranjeet Kaur, K.; Amit, K.; Simran, K.; Alka, R. Heavy metal toxicity in earthworms and its environmental implications: A review. *Environ. Adv.* **2023**, *12*, 100374.
29. Sur, I.M.; Moldovan, A.; Micle, V.; Polyak, E.T. Assessment of Surface Water Quality in the Baia Mare Area, Romania. *Water* **2022**, *14*, 3118. [CrossRef]
30. Petrean, I.A.; Micle, V.; Sur, I.M.; Şenilă, M. Characterization of Sterile Mining Dumps by the ICP-OES Analytical Method: A Case Study from Baia Mare Mining Area (Maramures, Romania). *Sustainability* **2023**, *15*, 1158. [CrossRef]
31. Fodor, D. *Pagini din Istoria Mineritului*; Academia Română de Ştiinţe Tehnice, Secţia Petrol, Mine şi Geonomie: Bucharest, Romania, 2005; p. 456. ISBN 973-86131-8-3.
32. Fodor, D.; Lazar, M. Impact of Mining Activity on the Environment. AGIR Bulletin no. 3/2006. pp. 2–13. Available online: <https://www.agir.ro/buletine/199.pdf> (accessed on 18 September 2023).
33. Ianovici, V.; Borcos, M.; Bleahu, M.; Patrulius, D.; Lupu, M.; Dimitrescu, R.; Savu, H. *Geology of the Apuseni Mountains*; Editura Academiei Române: Bucuresti, Romania, 1976.
34. Ciobanu, C.L.; Găbudeanu, B.; Cook, N.L. Neogene ore deposits and metallogeny of the Golden Quadrilateral, South Apuseni Mountains, Romania. *IAGOD Guid. Ser.* **2004**, *12*, 23–88.
35. Udubaşa, G.; Ţua, R.; Szakáll, S.; Kvasnytsya, V.; Koszowska, E.; Novák, M. *Minerals of the Carpathians*; Szakáll, S., Ed.; Granit: Prague, Czech Republic, 2002.
36. Iancu, G.; Kovacs, M.; Fülöp, A.; Balintoni, I.; Constantinescu, E.; Anastasiu, N.; Gorduza, V.; Jurje, M.; Gorduza, A.; Popa, C.I.; et al. Ore deposits and other clas-sic localities in the Eastern Carpathians: From metamorphic to volcanic. *Acta Miner.-Petrogr. Field Guide Ser.* **2010**, *19*, 1–55.
37. Bowman, E.E.; Ducea, M.N.; Petrescu, L. Late Cretaceous age of the Crucea uranium ore deposit, East Carpathians, Romania. *Results Geochem.* **2020**, *1*, 100002. [CrossRef]
38. Borcos, M. *Map of the Mineral Resources*; Ministry of Geology, Institute of Geology and Geophysics: Bucharest, Romania, 1984.
39. Borcos, M. La mise en valeur des pyrites aurifères du champ minier de Roşia Montană. *Rev. Roum. Géologie* **2011**, *55*, 3–21.
40. Wollmann, V. *A Millennium and a Half of Gold Mining at Roşia Montană*; DAR Publishing Development: Washington, DC, USA, 2017.
41. Licences/Permits in Progress. Available online: <https://www.namr.ro/resurse-minerale/licentepermise-active/> (accessed on 8 July 2023).
42. Decision 816/1998 Regarding the Preservation and Definitive Closure of Some Mines and Quarries. Available online: <https://legislatie.just.ro/Public/DetaliiDocumentAfis/16175> (accessed on 18 September 2023).
43. Decision 17/1999 Regarding the Definitive Closure and Conservation of Some Mines and Quarries, Stage II. Available online: <https://legislatie.just.ro/Public/DetaliiDocumentAfis/16721> (accessed on 18 September 2023).
44. Decision 720/1999 Regarding the Approval of the Program for the Conservation and Definitive Closure of Some Mines and Quarries, Stage III. Available online: <https://legislatie.just.ro/Public/DetaliiDocumentAfis/19222> (accessed on 18 September 2023).
45. Decision 493/2000 regarding the approval of the Program for the Conservation and Definitive Closure of Some Mines and Quarries, Stage IV. Available online: <https://legislatie.just.ro/Public/DetaliiDocumentAfis/22961> (accessed on 18 September 2023).
46. Decision 602/2001 Regarding the Approval of the Final Closure of Some Mines and Quarries, Stage V. Available online: <https://legislatie.just.ro/Public/DetaliiDocumentAfis/29435> (accessed on 18 September 2023).
47. Decision 898/2002 Regarding the Approval of the Final Closure of Some Mines and Quarries, Stage VI. Available online: <https://legislatie.just.ro/Public/DetaliiDocumentAfis/38223> (accessed on 18 September 2023).
48. Decision 926/2003 Regarding the Approval of the Conservation, Definitive Closure and Monitoring of Post-Closure Environmental Factors of Some Mines and Quarries, Stage VII. Available online: <https://legislatie.just.ro/Public/DetaliiDocumentAfis/45801> (accessed on 18 September 2023).

49. Decision 1846/2004 Regarding the Approval of the Conservation, Definitive Closure and Monitoring of Post-Closure Environmental Factors of Some Mines and Quarries, Stage VIII. Available online: <https://legislatie.just.ro/Public/DetaliuDocumentAfis/57119> (accessed on 18 September 2023).
50. Decision 1008/2006 Regarding the Approval of the Definitive Closure and Monitoring of Post-Closure Environmental Factors of some Mines and Quarries, Stage IX. Available online: <https://legislatie.just.ro/Public/DetaliuDocumentAfis/74257> (accessed on 18 September 2023).
51. Decision 644/2007 Regarding the Approval of the Final Closure and the Monitoring of the Post-Closure Environmental Factors of Some Mines and Quarries, the Xth Stage, and the Modification of Some Normative Acts in the Field of the Closure of Some Mines and Quarries. Available online: <https://legislatie.just.ro/Public/DetaliuDocumentAfis/83575> (accessed on 18 September 2023).
52. Decision 997/2010 Regarding the Approval of the Final Closure and the Post-Closure Monitoring of the Safety Status of the Objective and the Environmental Factors of Some Mines and Quarries, Stage XI, and the Modification of Some Normative Acts in the Field of the Closure of Some Mines and Quarries. Available online: <https://legislatie.just.ro/Public/DetaliuDocumentAfis/122752> (accessed on 18 September 2023).
53. Armstrong, R.; Kozelj, D.; Herrington, R. The Majdenpek porphyry Cu-Au deposit of eastern Serbia: A review. In *Super Porphyry Copper and Gold Deposits: A Global Perspective*; Porter, T.M., Ed.; PGC Publishing: Adelaide, Australia, 2005; Volume 2, pp. 453–466.
54. Stroie, L.D. Stabilizarea Haldelor de Steril din Banat și Impactul Asupra Mediului și Populației. Ph.D. Thesis, Politehnica Timișoara, Banat, Romania, 2009; p. 236, ISBN 978-973-625-865-7.
55. Order No. 756 of November 3, 1997, for the Approval of the Regulation on Environmental Pollution Assessment, Ministry of Water, Forests and Environmental Protection. Available online: <https://legislatie.just.ro/Public/DetaliuDocument/13572> (accessed on 8 July 2023).
56. Kulczycka, J.; Dziobek, E. Challenges in Managing Waste from Extractive Industries during the Transition to a Circular Economy Model in Poland. *Mater. Proc.* **2021**, *5*, 42. [CrossRef]
57. Yuan, J.; Ding, Z.; Bi, Y.; Li, J.; Wen, S.; Bai, S. Resource Utilization of Acid Mine Drainage (AMD): A Review. *Water* **2022**, *14*, 2385. [CrossRef]
58. Drapeau, C.; Argane, R.; Delolme, C.; Blanc, D.; Benzaazoua, M.; Hakkou, R.; Baumgartl, T.; Edraki, M.; Lassabatere, L. Lead Mobilization and Speciation in Mining Waste: Experiments and Modeling. *Minerals* **2021**, *11*, 606. [CrossRef]
59. Law no. 137/1995—Law on the Environmental Protection. Available online: http://www.vertic.org/media/National%20Legislation/Romania/RO_Law_on_Environmental_Protection_1995.pdf (accessed on 8 July 2023).
60. Mining Law no. 85/2003 as Further Amended and Supplemented. Available online: <http://www.namr.ro/wp-content/uploads/2014/01/LM852003.pdf> (accessed on 8 July 2023).
61. Law no. 1213/2006 Regarding the Establishment of the Framework Procedure for Assessing the Impact on the Environment for Certain Public and Private Projects. Available online: <https://legislatie.just.ro/Public/DetaliuDocumentAfis/75366> (accessed on 6 September 2023).
62. Law no. 445/2000 Regarding the Assessment of the Impact of Certain Public and Private Projects on the Environment. Available online: <https://legislatie.just.ro/Public/DetaliuDocumentAfis/109452> (accessed on 8 July 2023).
63. Law no. 856/2002 Regarding the Record of Waste Management and for the Approval of the List Including Waste, including Hazardous Waste. Available online: <https://legislatie.just.ro/Public/DetaliuDocumentAfis/38294> (accessed on 6 September 2023).
64. Directive 2000/60/EC of the European Parliament and of the Council of 23 October 2000 Establishing a Framework for Community Action in the Field of Water Policy. Available online: <https://eur-lex.europa.eu/legal-content/EN/TXT/?uri=CELEX%3A02000L0060-20141120> (accessed on 6 September 2023).
65. Decision no. 570 of August 10, 2016 Regarding the Approval of the Program for the Gradual Elimination of Discharges, Emissions and Losses of Priority Hazardous Substances and Other Measures for the Main Pollutants. Available online: <https://legislatie.just.ro/Public/DetaliuDocumentAfis/181020> (accessed on 6 September 2023).
66. ORDER no. 161 for the Approval of the Norm Regarding the Classification of Surface Water Quality in Order to Establish the Ecological Status of Water Bodies. Available online: <http://www.monitoruljuridic.ro/monitorul-oficial/161/2006-02-21> (accessed on 10 August 2023). (In Romanian)
67. Normative NTPA-001/2002 of February 28, 2002, Regarding the Establishment of Pollutant Loading Limits of Industrial and Urban Wastewater When Discharged into Natural Receivers. Available online: <https://legislatie.just.ro/Public/DetaliuDocumentAfis/98311> (accessed on 10 August 2023). (In Romanian)
68. Normative NTPA-002 of February 28, 2002 Regarding the Conditions for the Discharge of Waste Water into the Sewage Networks of Localities and Directly into Treatment Plants. Available online: <https://legislatie.just.ro/Public/DetaliuDocumentAfis/98310> (accessed on 10 August 2023). (In Romanian)
69. National Administration of Romanian Waters—Synthesis of Water Quality in Romania for 2022. Available online: https://rowater.ro/wp-content/uploads/2023/06/Sinteza-Calitatii-Apelor-din-Romania-in-anul-2022_vol.-I.pdf (accessed on 18 September 2023).

70. Direcția-Generală-Resurse-Minerale. Inventarierea și inspecția vizuală a haldelor de steril și a iazurilor de decantare de pe teritoriul României, Ministerul Economiei, Comerțului și Relațiilor cu Mediul de Afaceri, Direcția Generală Resurse Minerale. 2017. Available online: <https://oldeconomie.gov.ro/images/resurse-minerale/Raport%20Halde%20Iazuri%2012%20sept%202017.pdf> (accessed on 24 August 2023). (In Romanian)
71. Udubașa, G.; Roșu, E.; Seghedi, I.; Ivășcanu, P.M. The “Golden Quadrangle” in the Metaliferi Mts., Romania: What does this really mean. *Rom. J. Miner. Depos.* **2001**, *79* (Suppl. S2), 24–34.
72. Damian, G.; Buzatu, A.; Apopei, A.I.; Damian, F.; Maftai, A.E. Hydrothermal Sphalerites from Ore Deposits of Baia Mare Area. *Minerals* **2021**, *11*, 1323. [CrossRef]
73. Borcos, G.; Udubasa, G. Chronology and characterisation of mining development in Romania. *Rom. J. Earth Sci.* **2012**, *86*, 17–26.
74. General Directorate of Mineral Resources. Inventory of Mining Waste Dumps Belonging to Mining Sites with Ceased Activity—Dumps. Ministry of Economy, Trade and Relations with the Business Environment, Directorate General for Mineral Resources. 2012. Available online: http://economie.gov.ro/images/legislatie/Resurse%20Minerale/Inventar_Halde_iulie_2012.pdf (accessed on 24 August 2023).
75. General Directorate of Mineral Resources. Inventory of Mining Waste Dumps Belonging to Mining Sites with Ceased Activity—Tailings ponds. Ministry of Economy, Trade and Business Relations, Directorate-General for Mineral Resources. 2012. Available online: http://economie.gov.ro/images/legislatie/Resurse%20Minerale/Inventar_Iazuri_de_Decantare_iulie_2012.pdf (accessed on 24 August 2023).
76. General Directorate of Mineral Resources. List of Mining Objectives Whose Closure Has Been Approved by Government Decisions. Ministry of Economy, Trade and Relations with the Business Environment, Directorate-General for Mineral Resources. 2012. Available online: <http://economie.gov.ro/images/resurse-minerale/Lista%20obiectivelor%20miniare.pdf> (accessed on 24 August 2023).
77. Emergency Ordinance no. 51/1997 Regarding Certain Measures for the Conservation and Closure of Mines. Available online: <https://legislatie.just.ro/Public/DetaliiDocumentAfis/11324> (accessed on 10 August 2023). (In Romanian)
78. Mining Law no. 61/1998. Available online: https://www.namr.ro/wp-content/uploads/2014/03/MLaw_85.pdf (accessed on 8 July 2023).
79. Government Decision no. 1208/2003 on the Norms of Application of the Mining Law no. 85.2003. Available online: https://rmis.jrc.ec.europa.eu/uploads/legislation/MINLEX_CountryReport_RO.pdf (accessed on 6 September 2023).
80. Directive 2006/21/EC of the European Parliament and of the Council of 15 March 2006 on the Management of Waste from Extractive Industries and Amending Directive 2004/35/EC. Available online: <https://eur-lex.europa.eu/legal-content/EN/TXT/?uri=celex%3A32006L0021> (accessed on 10 August 2023).
81. Thisani, S.K.; Kallon, D.V.V.; Byrne, P. Review of Remediation Solutions for Acid Mine Drainage Using the Modified Hill Framework. *Sustainability* **2021**, *13*, 8118. [CrossRef]
82. Allan, R.J. Impact of Mining Activities on the Terrestrial and Aquatic Environment with Emphasis on Mitigation and Remedial Measures. In *Heavy Metals. Environmental Science*; Förstner, U., Salomons, W., Mader, P., Eds.; Springer: Berlin/Heidelberg, Germany, 1995. [CrossRef]

Disclaimer/Publisher’s Note: The statements, opinions and data contained in all publications are solely those of the individual author(s) and contributor(s) and not of MDPI and/or the editor(s). MDPI and/or the editor(s) disclaim responsibility for any injury to people or property resulting from any ideas, methods, instructions or products referred to in the content.