

List of supplementary Figures and Tables

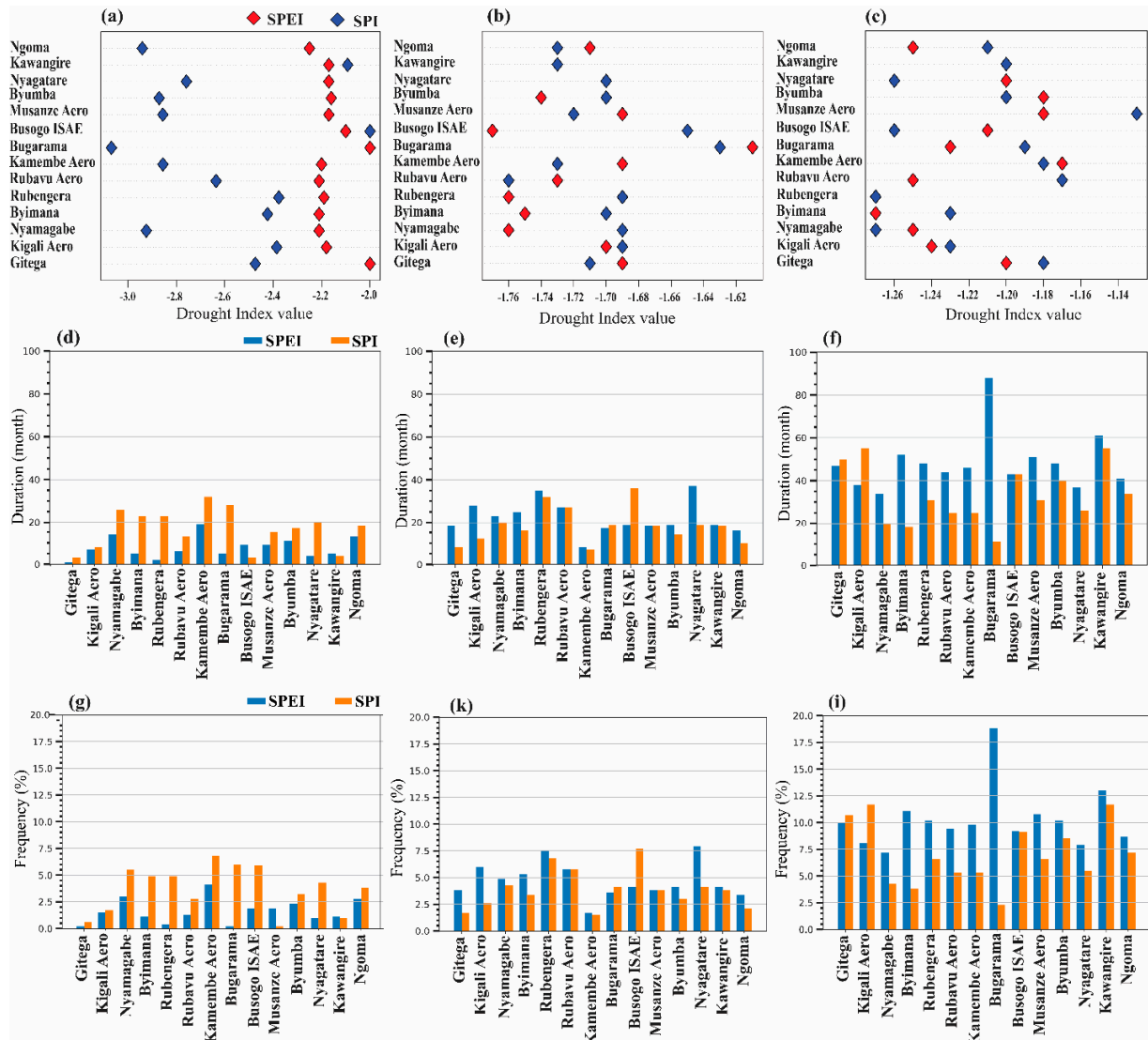
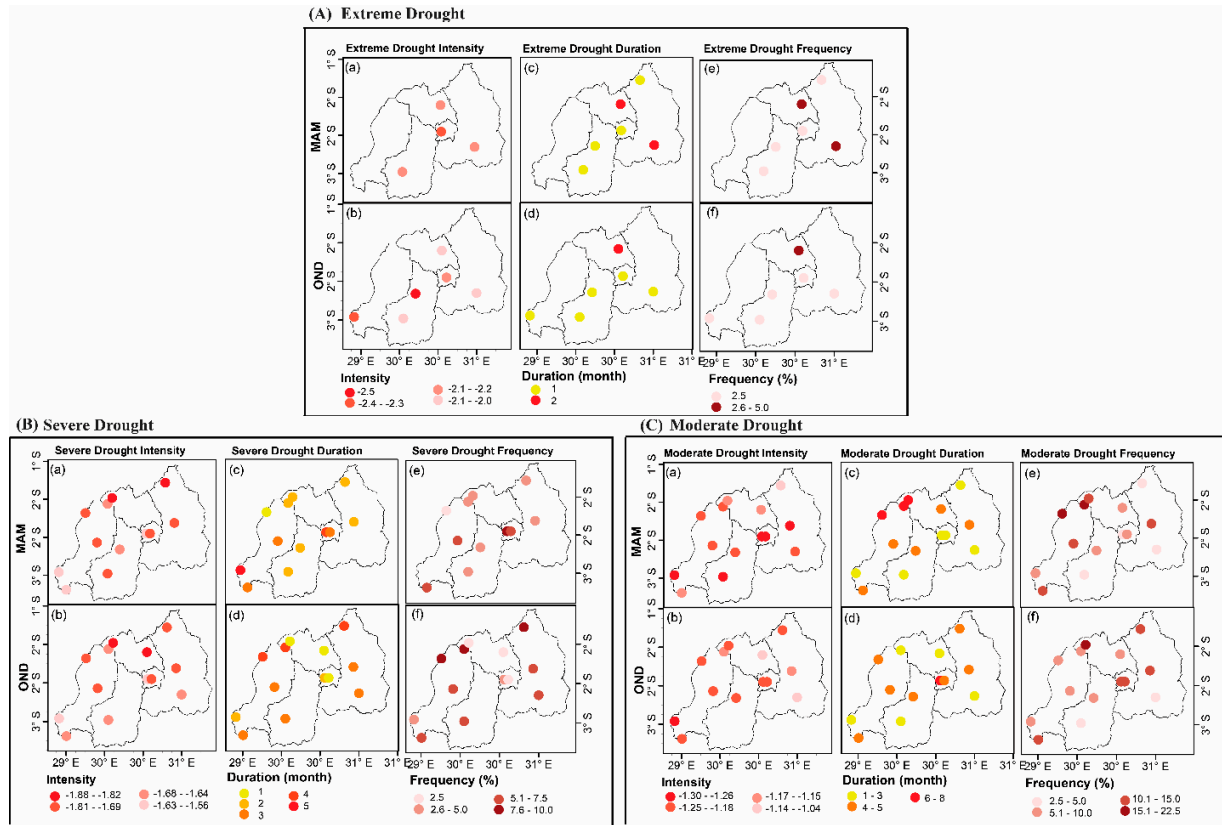


Figure S1. Variations of the characteristics of SPEI and SPI indices at 12-month time scale under Extreme drought category (SPEI/SPI ≤ -2) for all stations used in this study from 1981-2020. The characteristics considered here are Intensity (a,b,c), Duration (d,e,f) and Frequency (g,h,i).



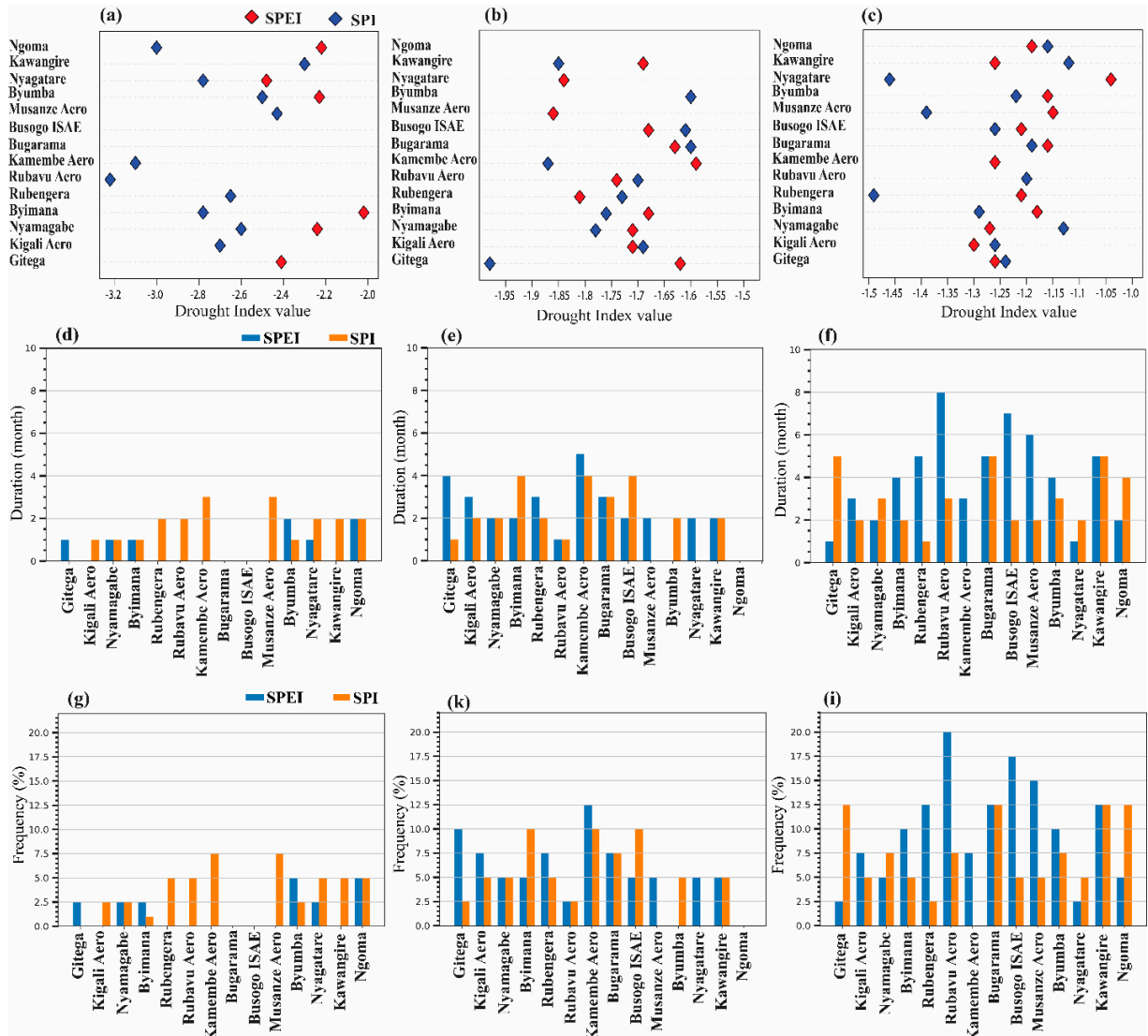


Figure S3: The MAM seasonal characteristics of SPEI and SPI at 3-month from 1981 to 2020. The characteristics considered here are Intensity (a,b,c), Duration (d,e,f) and Frequency (g,h,i).

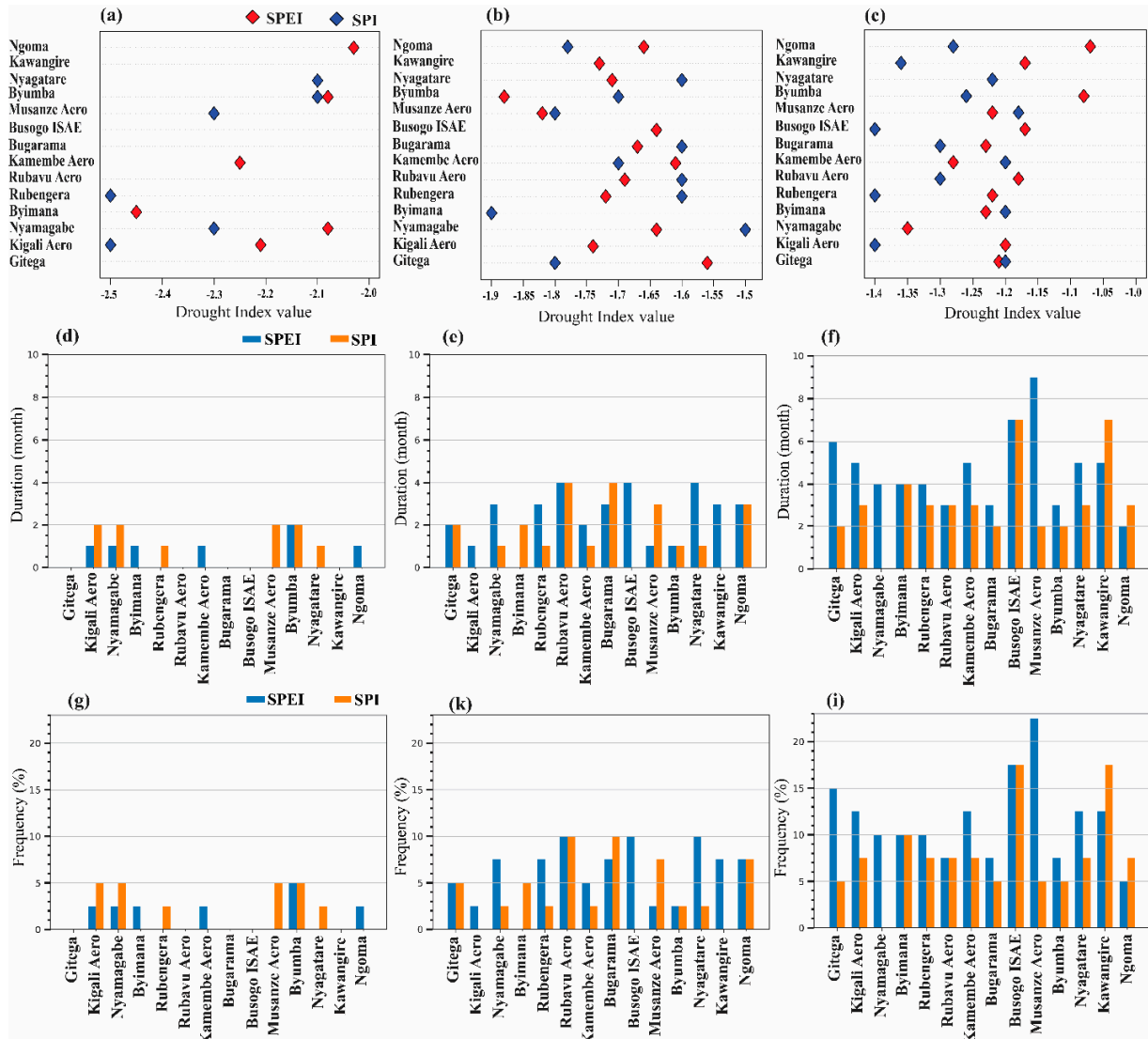


Figure S4: The same as Figure S3 but during OND season. The characteristics considered here are Intensity (a,b,c), Duration (d,e,f) and Frequency (g,h,i).

Table S1: The correlation between SPI and SPEI at 3 and 12-month time scales for all stations used in this study.

Stations	3 Month	12 Month
Gitega	0.94	0.96
Kigali Aero	0.91	0.91
Nyamagabe	0.96	0.94
Byimana	0.90	0.86
Rubengera	0.90	0.92
Rubavu Aero	0.96	0.91
Kamembe Aero	0.93	0.87

Busogo ISAE	0.79	0.78
Musanze Aero	0.96	0.96
Byumba	0.85	0.78
Nyagatare	0.88	0.88
Kawangire	0.76	0.77
Ngoma	0.87	0.84
Bugarama	0.75	0.74