

Figure S1. Elevation of Bangkirai hills forest (m).

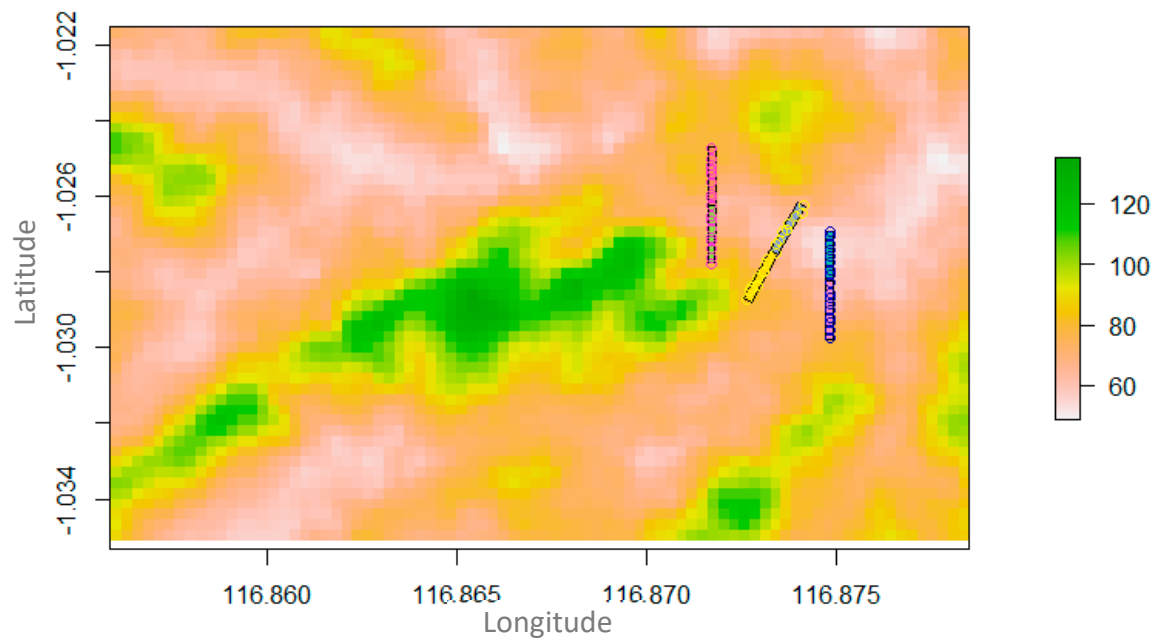


Figure S2. NOAA-AVHRR hotspots, acquired in March 1998, at East Kalimantan, Indonesia.

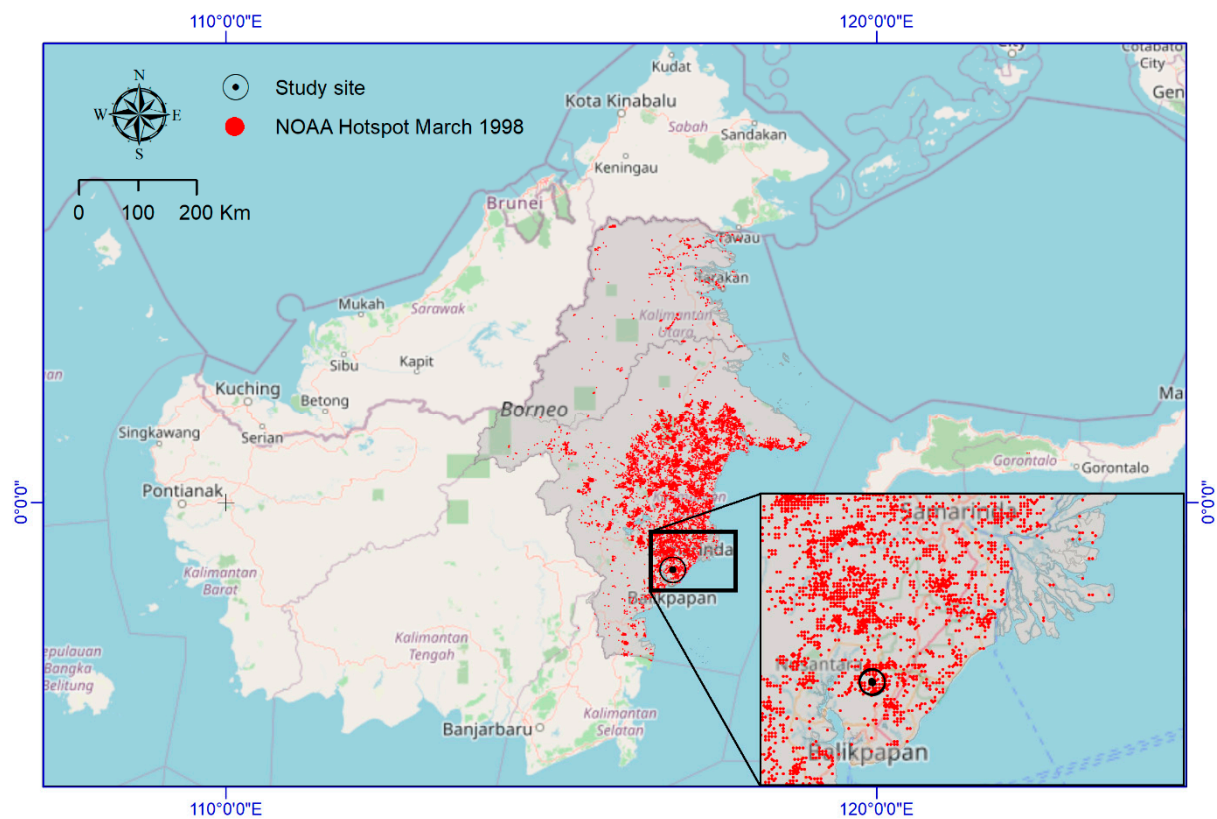


Figure S3. Climate of Bangkirai hills forest : (a) Precipitation, (b) Temperature.

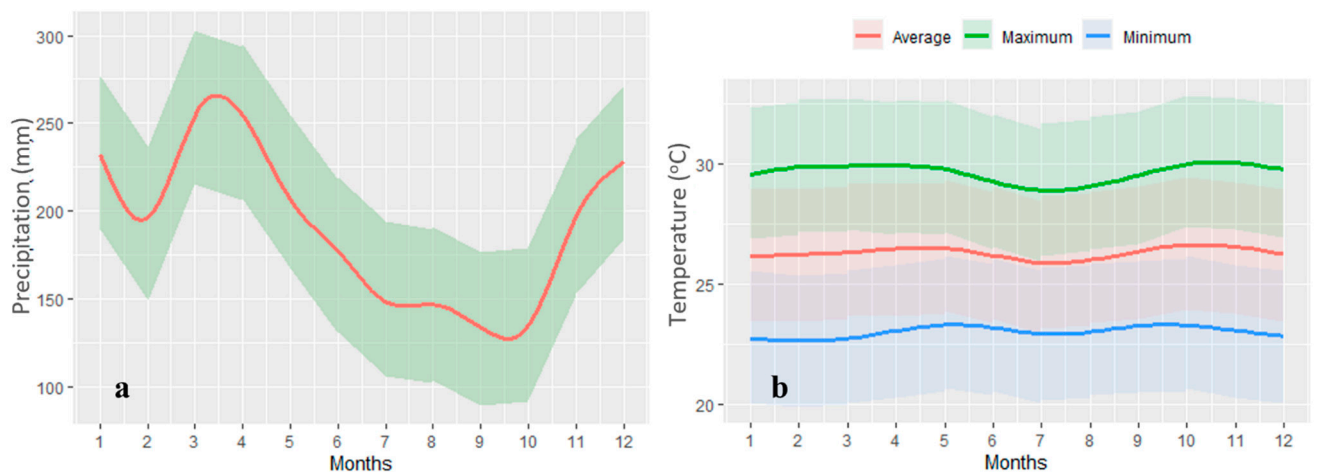
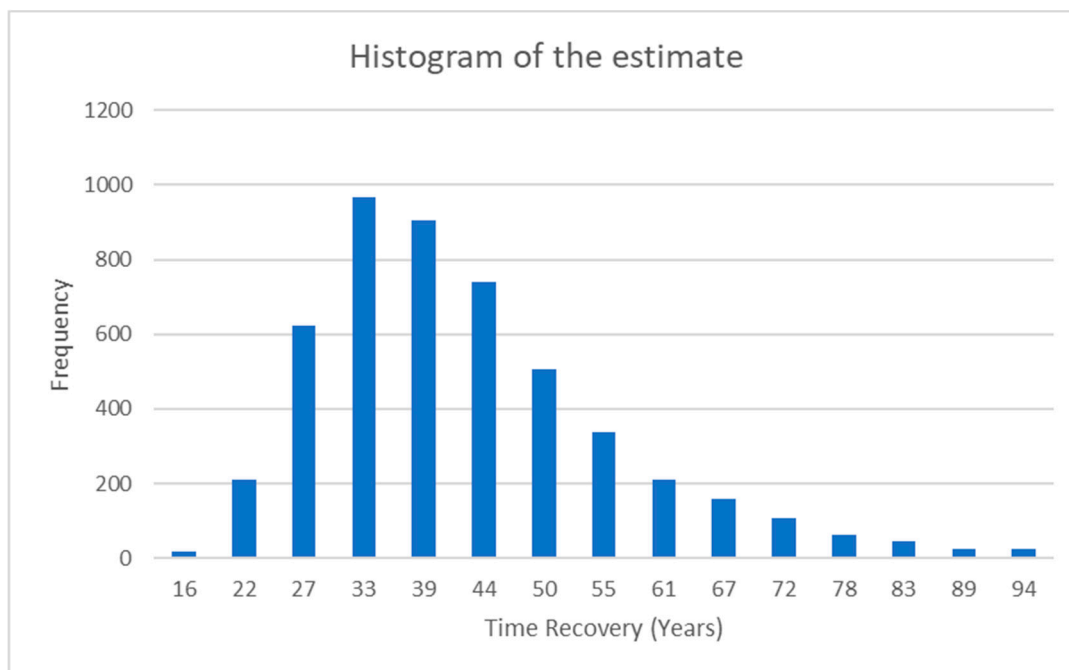


Figure S4. Histogram of the time recovery estimate after fire based on Monte Carlo simulation ($n = 5000$).



Noted: Time recovery estimate after fire based on Monte Carlo simulation ($n = 5,000$) with the input of parameters: AGB unburned forest $265.30 \pm 34.16 \text{ Mg ha}^{-1}$, MAI AGB of forest regrowth $6.24 \pm 1.59 \text{ Mg ha}^{-1} \text{ yr}^{-1}$, and data follows a normal distribution.